

Converting Colors

Android(4294949314)

Have a look what the booklet for
Android(4294949314) contains.

Android(4294949314)	3
<i>Conversions</i>	4
<i>Details</i>	6
<i>Harmonies</i>	11
<i>Previews</i>	23
<i>Color Blindness Simulation</i>	26
<i>CSS Examples</i>	29

Color

Android(4294949314)

Conversions

Conversions Part 1

Format	Color
Hex	FFB9C2
RGB	255, 185, 194
RGB Percent	100%, 73%, 76%
CMY	0.0000, 0.2745, 0.2392
CMYK	0.00, 0.27, 0.24, 0.00
HSL	352°, 100%, 86%
HSV	352°, 27%, 100%
XYZ	68.3266, 59.8530, 58.9905
YIQ	206.9560, 38.8310, 17.6390

Conversions

Conversions Part 2

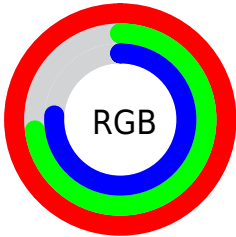
Format	Color
R _Y B	255, 185, 194
Decimal	16759234
CIE Lab	81.76, 26.53, 5.50
CIE LCh	82, 27.100, 11.720
Yxy	59.8530, 0.3651, 0.3198
Android (android.graphics.Color)	4294949314 (0xFFFFB9C2)
YUV	206.9560, -6.3873, 42.1346
Hunter-Lab	77.3647, 22.2585, 8.9467

Details

The Android color `4294949314` is a light color, and the websafe version is hex `FFCCCC`. A complement of this color would be `4290379766`, and the grayscale version is `4291809231`.

A 20% lighter version of the original color is `4294963706`, and `4291134348` is the 20% darker color. If you saturate the color by 10%, you get `4294942892`, and if you desaturate by 10%, it is `4294955992`.

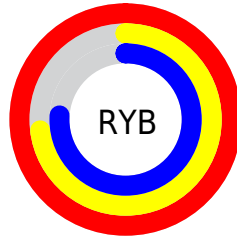
Distribution



Red (100%)

Green (73%)

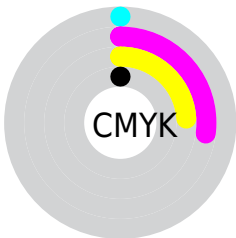
Blue (76%)



Red (100%)

Yellow (73%)

Blue (76%)

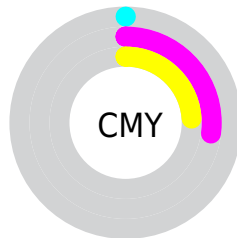


Cyan (0%)

Magenta (27%)

Yellow (24%)

Black (0%)



Cyan (0%)

Magenta (27%)

Yellow (24%)

Brightness & Saturation Gradients

These gradients show how the Android color 4294949314 changes by changing the brightness by 10 percent. The first figure shows a shift by +10% for each color and the second figure -10%.

Similar to the brightness gradients but the following saturation gradients show a change of the Android color 4294949314 by changing the saturation by 10% instead.

 4294949314

 4294949314

4294967295

 4293041831

 4294963706

 4291134348


 4289292915

 4287517019

 4285741379

 4284031533

 4282386969

 4281008128

 4278190080

 4294949314

 4294949314

 4294942892

 4294955992

 4294936214

 4294962414

 4294929535

4294967295

 4294923113

 4294916435

 4294910013

 4294903590

 4294901793

Harmonies

Analogous

The Analogous color harmony consists of three colors that are next to each other on the color wheel.



4294228956



4294949314



4294753707

Triad

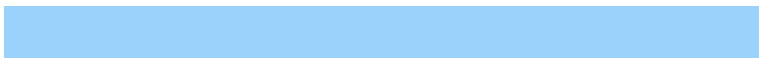
The Triadic color harmony groups three colors that are evenly spaced from another and form a triangle on the color wheel.



4294949314



4290237605



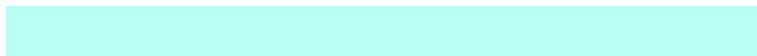
4288271099

Complementary

The Complementary color scheme is a pair of colors which are on the opposite of each other on the color wheel.



4294949314



4290379766

Split Complementary

Split-complementary colors differ from the complementary color scheme. The scheme consists of three colors, the original color and two neighbors of the complement color.



4286896364



4294949314



4288403642

Square

The Square scheme is like the rectangle color scheme, but the four colors are evenly spaced on the color wheel.



4294949314



4292136345



4287027925



4290431741

Rectangle

The Rectangle color scheme consists of four colors that form a rectangle on the color wheel.



4294949314



4294099615



4287027925



4287616247

Sweetspot

The Sweet Spot groups the original color and five complimentary colors.



4294949314



4294962157



4294359551



4286608244



4278190080



4286611584

Same Dimension

The Same Dimension uses a secret algorithm to generate beautiful new colors.



4294949314



4294945718



4294955961



4286608244



4290707481



4282384392

Inverse Universe

The Inverse Universe completely reimagines the original color for something new.



4294949314



4294945718



4290373119



4286608244



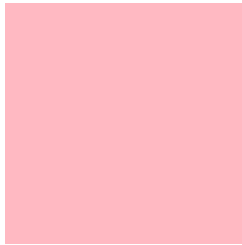
4290707481



4282384392

Previews

White Background



This preview shows how the Android color 4294949314 looks on a white background.

Color Contrast Check

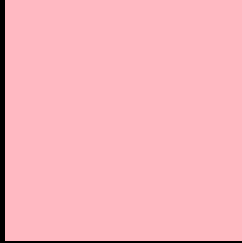
Large Text (above 18pt) WCAG AA × Fail

Any Text WCAG AA × Fail

Large Text (above 18pt) WCAG AAA × Fail

Any Text WCAG AAA × Fail

Black Background



This preview shows how the Android color 4294949314 looks on a black background.

Color Contrast Check

Large Text (above 18pt) WCAG AA ✓ Pass

Any Text WCAG AA ✓ Pass

Large Text (above 18pt) WCAG AAA ✓ Pass

Any Text WCAG AAA ✓ Pass

If you want to check with other color combinations, try the [Color Contrast Checker](#).

Android 4294949314 Background



This preview shows how black text looks on a background with the Android color 4294949314.

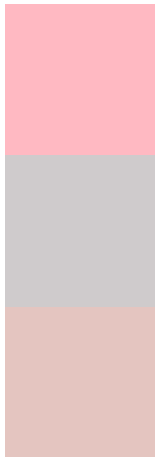


This preview shows how white text looks on a background with the Android color 4294949314.

Color Blindness Simulation

Color vision deficiency is a very complex topic, and I could not describe the different causes any better than Wikipedia does, so if you want to learn more, you should check out their [article about color blindness](#).


Dichromacy



Original Color
4294949314

Protanopia
4291808204

Deuteranopia
4293182912



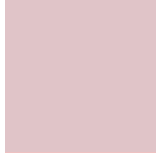
Tritanopia
4294949318

Trichromacy



Original Color

4294949314



Protanomaly

4292920520



Deuteranomaly

4293837249



Tritanomaly

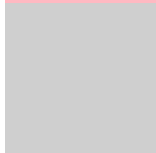
4294949317

Monochromacy



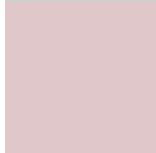
Original Color

4294949314



Achromatopsia

4291809231



Achromatomaly

4292921290

CSS Examples

Text

The CSS property to change the color of the text to Android 4294949314 is called "color". The color property can be set on classes, ids or directly on the HTML element.

This example shows how text in the color `rgb(255, 185, 194)` looks like.

```
.text, #text, p{  
    color:rgb(255, 185, 194)  
}
```

If you want to add a text shadow in that color use the text-shadow property, you can generate a text shadow directly with our [CSS Text Shadow Generator](#).

Here you see how black text with a 4 pixel rgb(255, 185, 194) colored shadow looks like.

```
.shadow{ text-shadow: 4px 4px 2px rgb(255, 185, 194) }
```

Border

The CSS property to change the border of an element to Android 4294949314 is called "border". The border property can be set on classes, ids or directly on the HTML element.

This example shows the color as border, it can be applied via the CSS property "border" or "border-color".

```
.border, #border, table{ border:4px solid rgb(255, 185, 194) }
```

If only the border color should be changed use the property `border-color`.

```
.border{ border-color:rgb(255, 185, 194) }
```

If you want to add a box shadow in that color use:

Here you see how a box with a 4 pixel `rgb(255, 185, 194)` colored shadow looks like.

```
.boxshadow{ -moz-box-shadow:4px 4px 4px  
4px rgb(255, 185, 194); -webkit-box-  
shadow:4px 4px 4px 4px rgb(255, 185, 194);  
box-shadow:4px 4px 4px 4px rgb(255, 185,  
194) }
```

Background

The CSS property to change the background color of an element to Android 4294949314 is called "background". The background property can be set on classes, ids or directly on the HTML element.

```
.background, #background, body{  
background: rgb(255, 185, 194) }
```

If only the background color should be changed can be used:

```
.background{ background-color: rgb(255,  
185, 194) }
```

This example shows the color as background, it is applied via the CSS property "background".

To optimize and compress your CSS code, you can use our [online CSS compressor and optimizer](#) based on csstidy. If you want to create a linear or radial gradient as background or border, check our [CSS Gradient Generator](#).

Hey! You found this booklet interesting? Support Converting Colors with the new Membership Option!

The pro membership hides all ads, plus gives you double the colors in the color bucket, and more awesome pro features!

[Learn more, Memberships starting at \\$2.50/m!](#)

**Follow me
on Twitter!**

@ConvertingColor