

# Converting Colors

Android(4294951103)

Have a look what the booklet for  
Android(4294951103) contains.

<b>Android(4294951103)</b> .....	3
<b><i>Conversions</i></b> .....	4
<b><i>Details</i></b> .....	6
<b><i>Harmonies</i></b> .....	11
<b><i>Previews</i></b> .....	23
<b><i>Color Blindness Simulation</i></b> .....	26
<b><i>CSS Examples</i></b> .....	29

# **Color**

**Android(4294951103)**

# Conversions

## Conversions Part 1

Format	Color
Hex	FFC0BF
RGB	255, 192, 191
RGB Percent	100%, 75%, 75%
CMY	0.0000, 0.2471, 0.2510
CMYK	0.00, 0.25, 0.25, 0.00
HSL	1°, 100%, 87%
HSV	1°, 25%, 100%
XYZ	69.4936, 62.7209, 57.7338
YIQ	210.7230, 37.8690, 13.0450

# Conversions

## Conversions Part 2

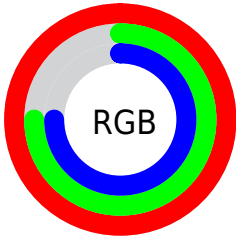
Format	Color
<a href="#">RYB</a>	<a href="#">255, 192, 191</a>
Decimal	<a href="#">16761023</a>
CIELab	<a href="#">83.30, 22.44, 9.32</a>
CIELCh	<a href="#">83, 24.304, 22.553</a>
Yxy	<a href="#">62.7209, 0.3659, 0.3302</a>
Android (android.graphics.Color)	<a href="#">4294951103 (0xFFFFC0BF)</a>
YUV	<a href="#">210.7230, -9.7234, 38.8309</a>
Hunter-Lab	<a href="#">79.1965, 18.0369, 12.2154</a>

# Details

The Android color `4294951103` is a light color, and the websafe version is hex `FFCCCC`. A complement of this color would be `4290772735`, and the grayscale version is `4292072403`.

A 20% lighter version of the original color is `4294965751`, and `4291136138` is the 20% darker color. If you saturate the color by 10%, you get `4294944678`, and if you desaturate by 10%, it is `4294957529`.

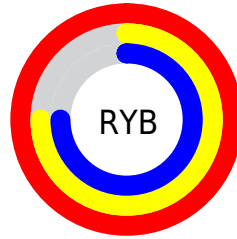
# Distribution



Red (100%)

Green (75%)

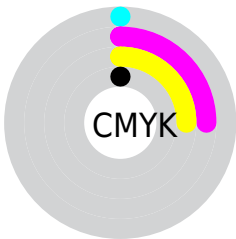
Blue (75%)



Red (100%)

Yellow (75%)

Blue (75%)

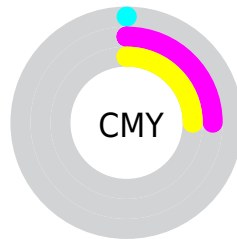


Cyan (0%)

Magenta (25%)

Yellow (25%)

Black (0%)



Cyan (0%)

Magenta (25%)

Yellow (25%)

# Brightness & Saturation Gradients

These gradients show how the Android color 4294951103 changes by changing the brightness by 10 percent. The first figure shows a shift by +10% for each color and the second figure -10%.

Similar to the brightness gradients but the following saturation gradients show a change of the Android color 4294951103 by changing the saturation by 10% instead.



 4294951103

 4294951103

4294967295

 4293043620

 4294965751

 4291136138

 4289294448

 4287518808

 4285743169

 4284033323

 4282389270

 4280942592

 4278190080

 4294951103

 4294951103

 4294944678

 4294957529

 4294938252

 4294963954

 4294931827

4294967295

 4294925401

 4294918720

 4294912294

 4294905869

 4294902784

# Harmonies

## Analogous

The Analogous color harmony consists of three colors that are next to each other on the color wheel.



4294623446



4294951103



4294493612

# Triad

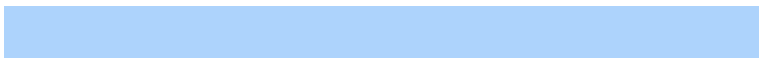
The Triadic color harmony groups three colors that are evenly spaced from another and form a triangle on the color wheel.



4294951103



4290042291



4289582076

# Complementary

The Complementary color scheme is a pair of colors which are on the opposite of each other on the color wheel.



4294951103



4290772735

# Split Complementary

Split-complementary colors differ from the complementary color scheme. The scheme consists of three colors, the original color and two neighbors of the complement color.



4288076275



4294951103



4288535753

# Square

The Square scheme is like the rectangle color scheme, but the four colors are evenly spaced on the color wheel.



4294951103



4291810213



4287683808



4291611898

# Rectangle

The Rectangle color scheme consists of four colors that form a rectangle on the color wheel.



4294951103



4293773732



4287683808



4288993018

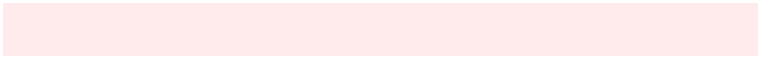


# Sweetspot

The Sweet Spot groups the original color and five complimentary colors.



4294951103



4294962155



4294950911



4286608243



4278190080



4286611584



# Same Dimension

The Same Dimension uses a secret algorithm to generate beautiful new colors.



4294951103



4294948019



4294959039



4286608243



4290708224



4282384640

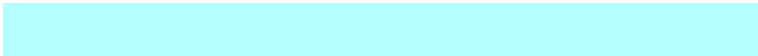


# Inverse Universe

The Inverse Universe completely reimagines the original color for something new.



4290772735



4289986303



4290764799



4285759360



4278238399



4278206272



# Previews

## White Background



This preview shows how the Android color 4294951103 looks on a white background.

## Color Contrast Check

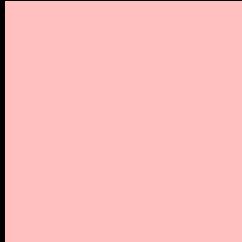
Large Text (above 18pt) WCAG AA × Fail

Any Text WCAG AA × Fail

Large Text (above 18pt) WCAG AAA × Fail

Any Text WCAG AAA × Fail

# Black Background



This preview shows how the Android color 4294951103 looks on a black background.

## Color Contrast Check

Large Text (above 18pt) WCAG AA ✓ Pass

Any Text WCAG AA ✓ Pass

Large Text (above 18pt) WCAG AAA ✓ Pass

Any Text WCAG AAA ✓ Pass

If you want to check with other color combinations, try the [Color Contrast Checker](#).



# Android 4294951103 Background



This preview shows how black text looks on a background with the Android color 4294951103.

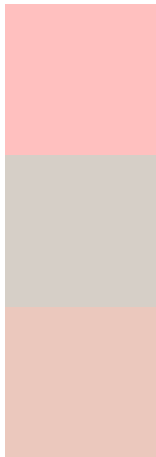


This preview shows how white text looks on a background with the Android color 4294951103.

# Color Blindness Simulation

Color vision deficiency is a very complex topic, and I could not describe the different causes any better than Wikipedia does, so if you want to learn more, you should check out their [article about color blindness](#).


## Dichromacy



**Original Color**  
4294951103

**Protanopia**  
4292267975

**Deuteranopia**  
4293642429

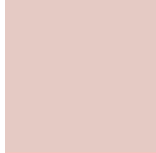


**Tritanopia**  
4294950861

# Trichromacy



**Original Color**  
4294951103



**Protanomaly**  
4293249732



**Deuteranomaly**  
4294100414

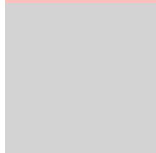


**Tritanomaly**  
4294950856

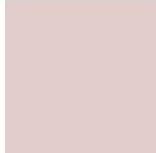
# Monochromacy



**Original Color**  
4294951103



**Achromatopsia**  
4292072403



**Achromatomaly**  
4293119180

# CSS Examples

## Text

The CSS property to change the color of the text to Android 4294951103 is called "color". The color property can be set on classes, ids or directly on the HTML element.

This example shows how text in the color `rgb(255, 192, 191)` looks like.

```
.text, #text, p{  
    color:rgb(255, 192, 191)  
}
```

If you want to add a text shadow in that color use the text-shadow property, you can generate a text shadow directly with our [CSS Text Shadow Generator](#).

Here you see how black text with a 4 pixel rgb(255, 192, 191) colored shadow looks like.

```
.shadow{ text-shadow: 4px 4px 2px rgb(255, 192, 191) }
```

## Border

The CSS property to change the border of an element to Android 4294951103 is called "border". The border property can be set on classes, ids or directly on the HTML element.

This example shows the color as border, it can be applied via the CSS property "border" or "border-color".

```
.border, #border, table{ border:4px solid rgb(255, 192, 191) }
```

If only the border color should be changed use the property `border-color`.

```
.border{ border-color:rgb(255, 192, 191) }
```

If you want to add a box shadow in that color use:

Here you see how a box with a 4 pixel `rgb(255, 192, 191)` colored shadow looks like.

```
.boxshadow{ -moz-box-shadow:4px 4px 4px  
4px rgb(255, 192, 191); -webkit-box-  
shadow:4px 4px 4px 4px rgb(255, 192, 191);  
box-shadow:4px 4px 4px 4px rgb(255, 192,  
191) }
```

# Background

The CSS property to change the background color of an element to Android 4294951103 is called "background". The background property can be set on classes, ids or directly on the HTML element.

```
.background, #background, body{  
background: rgb(255, 192, 191) }
```

If only the background color should be changed can be used:

```
.background{ background-color: rgb(255,  
192, 191) }
```

This example shows the color as background, it is applied via the CSS property "background".

To optimize and compress your CSS code, you can use our [online CSS compressor and optimizer](#) based on csstidy. If you want to create a linear or radial gradient as background or border, check our [CSS Gradient Generator](#).



Hey! You found this booklet interesting? Support Converting Colors with the new Membership Option!

The pro membership hides all ads, plus gives you double the colors in the color bucket, and more awesome pro features!

**[Learn more, Memberships starting at \\$2.50/m!](#)**

**Follow me  
on Twitter!**

@ConvertingColor