

# Converting Colors

Android(4294951608)

Have a look what the booklet for  
Android(4294951608) contains.

|  |    |
|--|----|
| <b>Android(4294951608)</b> .....               | 3  |
| <b><i>Conversions</i></b> .....                | 4  |
| <b><i>Details</i></b> .....                    | 6  |
| <b><i>Harmonies</i></b> .....                  | 11 |
| <b><i>Previews</i></b> .....                   | 23 |
| <b><i>Color Blindness Simulation</i></b> ..... | 26 |
| <b><i>CSS Examples</i></b> .....               | 29 |

# **Color**

**Android(4294951608)**

# Conversions

## Conversions Part 1

| Format      | Color                     |
|-------------|---------------------------|
| Hex         | FFC2B8                    |
| RGB         | 255, 194, 184             |
| RGB Percent | 100%, 76%, 72%            |
| CMY         | 0.0000, 0.2392, 0.2784    |
| CMYK        | 0.00, 0.24, 0.28, 0.00    |
| HSL         | 8°, 100%, 86%             |
| HSV         | 8°, 28%, 100%             |
| XYZ         | 69.1835, 63.3043, 53.9200 |
| YIQ         | 211.0990, 39.5660, 9.8220 |

# Conversions

## Conversions Part 2

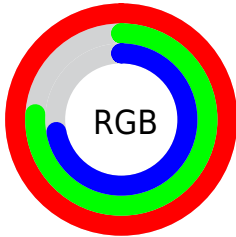
| Format                              | Color                          |
|-------------------------------------|--------------------------------|
| R <sub>Y</sub> B                    | 255, 196, 184                  |
| Decimal                             | 16761528                       |
| CIE Lab                             | 83.60, 20.45, 13.50            |
| CIE LCh                             | 84, 24.503, 33.422             |
| Yxy                                 | 63.3043, 0.3711,<br>0.3396     |
| Android<br>(android.graphics.Color) | 4294951608<br>(0xFFFFC2B8)     |
| YUV                                 | 211.0990, -13.3598,<br>38.5012 |
| Hunter-Lab                          | 79.5640, 15.9747,<br>15.5143   |

# Details

The Android color `4294951608` is a light color, and the websafe version is hex `FFCCCC`. A complement of this color would be `4290311679`, and the grayscale version is `4292072403`.

A 20% lighter version of the original color is `4294966256`, and `4291136643` is the 20% darker color. If you saturate the color by 10%, you get `4294945951`, and if you desaturate by 10%, it is `4294957266`.

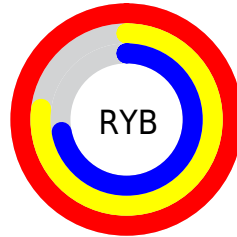
# Distribution



Red (100%)

Green (76%)

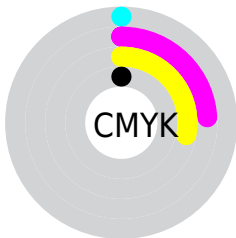
Blue (72%)



Red (100%)

Yellow (77%)

Blue (72%)

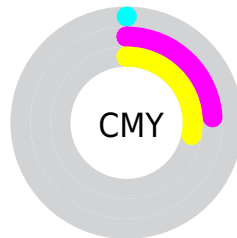


Cyan (0%)

Magenta (24%)

Yellow (28%)

Black (0%)



Cyan (0%)

Magenta (24%)

Yellow (28%)

# Brightness & Saturation Gradients

These gradients show how the Android color 4294951608 changes by changing the brightness by 10 percent. The first figure shows a shift by +10% for each color and the second figure -10%.

Similar to the brightness gradients but the following saturation gradients show a change of the Android color 4294951608 by changing the saturation by 10% instead.



 4294951608

 4294951608

4294967295

 4293044125

 4294966256

 4291136643

 4289294954

 4287519314

 4285743675

 4284033829

 4282389776

 4280877056

 4278190080

 4294951608

 4294951608

 4294945951

 4294957266

 4294940293

 4294962923

 4294934635

4294967295

 4294928978

 4294923321

 4294917919

 4294912262

 4294910976

# Harmonies

## Analogous

The Analogous color harmony consists of three colors that are next to each other on the color wheel.



4294885582



4294951608



4294232232

# Triad

The Triadic color harmony groups three colors that are evenly spaced from another and form a triangle on the color wheel.



4294951608



4289518779



4290368254

# Complementary

The Complementary color scheme is a pair of colors which are on the opposite of each other on the color wheel.



4294951608



4290311679

# Split Complementary

Split-complementary colors differ from the complementary color scheme. The scheme consists of three colors, the original color and two neighbors of the complement color.



4288534777



4294951608



4288143058

# Square

The Square scheme is like the rectangle color scheme, but the four colors are evenly spaced on the color wheel.



4294951608



4291221417



4287684073



4292397815

# Rectangle

The Rectangle color scheme consists of four colors that form a rectangle on the color wheel.



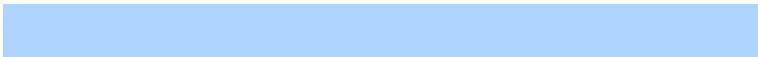
4294951608



4293381539



4287684073



4289713406

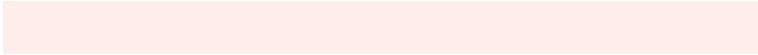


# Sweetspot

The Sweet Spot groups the original color and five complimentary colors.



4294951608



4294962667



4294949110



4286608755



4278190080



4286611584



# Same Dimension

The Same Dimension uses a secret algorithm to generate beautiful new colors.



4294951608



4294948779



4294960568



4286608755



4290714368

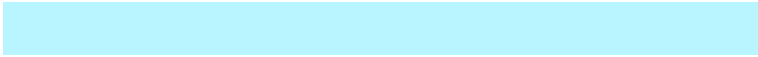


4282386688

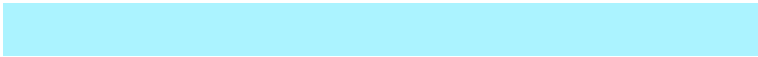


# Inverse Universe

The Inverse Universe completely reimagines the original color for something new.



4290311679



4289459199



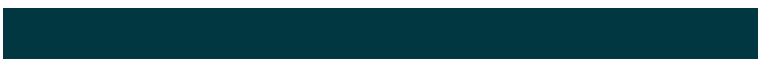
4290302719



4285759104



4278232255



4278204224



# Previews

## White Background



This preview shows how the Android color 4294951608 looks on a white background.

## Color Contrast Check

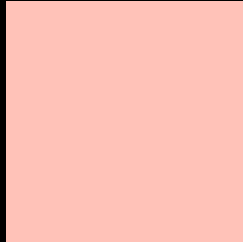
Large Text (above 18pt) WCAG AA × Fail

Any Text WCAG AA × Fail

Large Text (above 18pt) WCAG AAA × Fail

Any Text WCAG AAA × Fail

# Black Background



This preview shows how the Android color 4294951608 looks on a black background.

## Color Contrast Check

Large Text (above 18pt) WCAG AA ✓ Pass

Any Text WCAG AA ✓ Pass

Large Text (above 18pt) WCAG AAA ✓ Pass

Any Text WCAG AAA ✓ Pass

If you want to check with other color combinations, try the [Color Contrast Checker](#).



# Android 4294951608 Background



This preview shows how black text looks on a background with the Android color 4294951608.



This preview shows how white text looks on a background with the Android color 4294951608.

# Color Blindness Simulation

Color vision deficiency is a very complex topic, and I could not describe the different causes any better than Wikipedia does, so if you want to learn more, you should check out their [article about color blindness](#).


## Dichromacy



**Original Color**  
4294951608

**Protanopia**  
4292464831

**Deuteranopia**  
4293839287

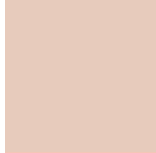


**Tritanopia**  
4294951118

# Trichromacy



**Original Color**  
4294951608



**Protanomaly**  
4293381052



**Deuteranomaly**  
4294231735

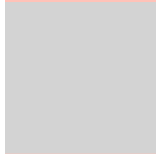


**Tritanomaly**  
4294951366

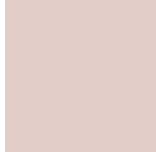
# Monochromacy



**Original Color**  
4294951608



**Achromatopsia**  
4292072403



**Achromatomaly**  
4293119433

# CSS Examples

## Text

The CSS property to change the color of the text to Android 4294951608 is called "color". The color property can be set on classes, ids or directly on the HTML element.

This example shows how text in the color `rgb(255, 194, 184)` looks like.

```
.text, #text, p{  
    color:rgb(255, 194, 184)  
}
```

If you want to add a text shadow in that color use the text-shadow property, you can generate a text shadow directly with our [CSS Text Shadow Generator](#).

Here you see how black text with a 4 pixel rgb(255, 194, 184) colored shadow looks like.

```
.shadow{ text-shadow: 4px 4px 2px rgb(255, 194, 184) }
```

## Border

The CSS property to change the border of an element to Android 4294951608 is called "border". The border property can be set on classes, ids or directly on the HTML element.

This example shows the color as border, it can be applied via the CSS property "border" or "border-color".

```
.border, #border, table{ border:4px solid rgb(255, 194, 184) }
```

If only the border color should be changed use the property `border-color`.

```
.border{ border-color:rgb(255, 194, 184) }
```

If you want to add a box shadow in that color use:

Here you see how a box with a 4 pixel `rgb(255, 194, 184)` colored shadow looks like.

```
.boxshadow{ -moz-box-shadow:4px 4px 4px  
4px rgb(255, 194, 184); -webkit-box-  
shadow:4px 4px 4px 4px rgb(255, 194, 184);  
box-shadow:4px 4px 4px 4px rgb(255, 194,  
184) }
```

# Background

The CSS property to change the background color of an element to Android 4294951608 is called "background". The background property can be set on classes, ids or directly on the HTML element.

```
.background, #background, body{  
background: rgb(255, 194, 184) }
```

If only the background color should be changed can be used:

```
.background{ background-color: rgb(255,  
194, 184) }
```

This example shows the color as background, it is applied via the CSS property "background".

To optimize and compress your CSS code, you can use our [online CSS compressor and optimizer](#) based on csstidy. If you want to create a linear or radial gradient as background or border, check our [CSS Gradient Generator](#).



Hey! You found this booklet interesting? Support Converting Colors with the new Membership Option!

The pro membership hides all ads, plus gives you double the colors in the color bucket, and more awesome pro features!

**[Learn more, Memberships starting at \\$2.50/m!](#)**

**Follow me  
on Twitter!**

@ConvertingColor