

Converting Colors

CIELCh(100, 119.907, 306.520)

Have a look what the booklet for
CIELCh(100, 119.907, 306.520)
contains.

CIELCh(89, 27.578, 325.385)	3
<i>Conversions</i>	4
<i>Details</i>	6
<i>Harmonies</i>	12
<i>Previews</i>	21
<i>Color Blindness Simulation</i>	24
<i>CSS Examples</i>	27

Color

CIELCh(89, 27.578, 325.385)

Conversions

Conversions Part 1

Format	Color
Hex	FED2FE
RGB	254, 210, 254
RGB Percent	100%, 82%, 100%
CMY	0.0049, 0.1772, 0.0048
CMYK	0.00, 0.17, 0.00, 0.00
HSL	300°, 95%, 91%
HSV	300°, 17%, 100%
XYZ	81.6364, 74.1641, 103.5824
YIQ	228.1720, 12.1000, 23.0120

Conversions

Conversions Part 2

Format	Color
RYB	254, 210, 254
Decimal	16700158
CIELab	89.00, 22.70, -15.67
CIELCh	89, 27.578, 325.385
Yxy	74.1641, 0.3147, 0.2859
Android (android.graphics.Color)	4294890238 (0xFF FED2FE)
YUV	228.1720, 12.7332, 22.6512
Hunter-Lab	86.1186, 18.5022, -11.0303

Details

The CIELCh color $89, 27.578, 325.385$ is a light color, and the websafe version is hex `FFCCFF`. A complement of this color would be $96, 27.552, 143.347$, and the grayscale version is $91, 0.011, 296.813$.

A 20% lighter version of the original color is $100, 0.012, 296.813$, and $69, 27.652, 325.592$ is the 20% darker color. If you saturate the color by 10%, you get $83, 43.491, 325.934$, and if you desaturate by 10%, it is $95, 11.602, 324.817$.

Distribution



- Red (100%)
- Green (82%)
- Blue (100%)



- Red (100%)
- Yellow (82%)
- Blue (100%)



- Cyan (0%)
- Magenta (17%)
- Yellow (0%)
- Black (0%)



- Cyan (0%)
- Magenta (18%)
- Yellow (0%)

Brightness & Saturation Gradients

These gradients show how the CIELCh color 89, 27.578, 325.385 changes by changing the brightness by 10 percent. The first figure shows a shift by +10% for each color and the second figure -10%.

Similar to the brightness gradients but the following saturation gradients show a change of the CIELCh color 89, 27.578, 325.385 by changing the saturation by 10% instead.


 89, 27.578,
325.385

 89, 27.578,
325.385


 100, 27.578,
325.385

 79, 27.578,
325.385

 69, 27.578,
325.385

 59, 27.578,
325.385

 49, 27.578,
325.385

 39, 27.578,
325.385

 29, 27.578,
325.385

 19, 27.578,

325.385

■ 9, 27.578, 325.385

■ 0, 27.578, 325.385

■ 89, 27.578,
325.385

■ 89, 27.578,
325.385

■ 83, 43.491,
325.934

■ 95, 11.602,
324.817

■ 78, 59.006,
326.456

100, 0.753,
144.809

■ 73, 73.656,
326.938

100, 0.753,
144.745

■ 69, 86.863,
327.362

100, 0.752,
144.682

■ 65, 98.001,

100, 0.751,

327.710

144.618

■ 63, 106.502,
327.970

100, 0.751,
144.554

■ 61, 112.036,
328.136

100, 0.750,
144.490

■ 60, 114.698,
328.215

100, 0.750,
144.426

■ 60, 115.144,
328.228

100, 0.749,
144.362

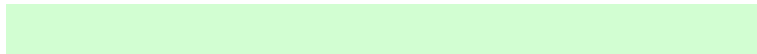
Harmonies

Complementary

The Complementary color scheme is a pair of colors which are on the opposite of each other on the color wheel.



89, 27.578, 325.385



96, 27.552, 143.347

Rectangle

The Rectangle color scheme consists of four colors that form a rectangle on the color wheel.



89, 27.578, 325.385



89, 27.578, 15.385



89, 27.578, 145.385



89, 27.578, 195.385

Sweetspot

The Sweet Spot groups the original color and five complimentary colors.



89, 27.575, 325.385



97, 7.944, 324.676



86, 22.732, 291.465



51, 5.422, 324.720



0, 0.000, 0.000



53, 0.007, 296.813

Same Dimension

The Same Dimension uses a secret algorithm to generate beautiful new colors.



89, 27.575, 325.385



87, 33.584, 325.589



88, 19.750, 344.237



50, 9.056, 324.944



45, 93.083, 328.228



12, 42.823, 328.228

Inverse Universe

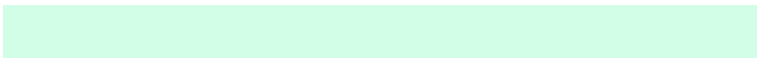
The Inverse Universe completely reimagines the original color for something new.



88, 16.448, 20.592



86, 20.312, 20.940



96, 19.353, 161.284



49, 5.254, 19.934



40, 84.224, 39.996



10, 33.366, 27.172

Previews

White Background



This preview shows how the CIELCh color 89, 27.578, 325.385 looks on a white background.

Color Contrast Check

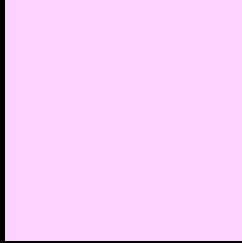
Large Text (above 18pt) WCAG AA × Fail

Any Text WCAG AA × Fail

Large Text (above 18pt) WCAG AAA × Fail

Any Text WCAG AAA × Fail

Black Background



This preview shows how the CIELCh color 89, 27.578, 325.385 looks on a black background.

Color Contrast Check

Large Text (above 18pt) WCAG AA ✓ Pass

Any Text WCAG AA ✓ Pass

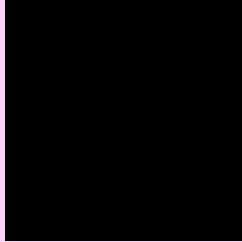
Large Text (above 18pt) WCAG AAA ✓ Pass

Any Text WCAG AAA ✓ Pass

If you want to check with other color combinations, try the [Color Contrast Checker](#).

CIELCh 89, 27.578, 325.385

Background



This preview shows how black text looks on a background with the CIELCh color 89, 27.578, 325.385.



This preview shows how white text looks on a background with the CIELCh color 89, 27.578, 325.385.

Color Blindness Simulation

Color vision deficiency is a very complex topic, and I could not describe the different causes any better than Wikipedia does, so if you want to learn more, you should check out their [article about color blindness](#).

Dichromacy



Original Color

89, 27.599, 325.388

Protanopia

89, 17.226, 287.119

Deuteranopia

89, 18.449, 306.616



Tritanopia
89, 15.714, 346.424

Trichromacy



Original Color
89, 27.599, 325.388



Protanomaly
89, 19.879, 304.538



Deuteranomaly
89, 21.706, 315.015

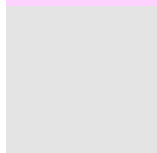


Tritanomaly
89, 19.780, 335.677

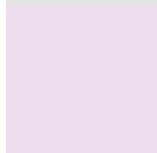
Monochromacy



Original Color
89, 27.599, 325.388



Achromatopsia
91, 0.011, 296.813



Achromatomaly
90, 10.118, 324.784

CSS Examples

Text

The CSS property to change the color of the text to CIELCh 89, 27.578, 325.385 is called "color". The color property can be set on classes, ids or directly on the HTML element.

This example shows how text in the color `rgb(254, 210, 254)` looks like.

```
.text, #text, p{  
    color:rgb(254, 210, 254)  
}
```

If you want to add a text shadow in that color use the text-shadow property, you can generate a text shadow directly with our [CSS Text Shadow Generator](#).

Here you see how black text with a 4 pixel rgb(254, 210, 254) colored shadow looks like.

```
.shadow{ text-shadow: 4px 4px 2px rgb(254, 210, 254) }
```

Border

The CSS property to change the border of an element to CIELCh 89, 27.578, 325.385 is called "border". The border property can be set on classes, ids or directly on the HTML element.

This example shows the color as border, it can be applied via the CSS property "border" or "border-color".

```
.border, #border, table{ border:4px solid rgb(254, 210, 254) }
```

If only the border color should be changed use the property `border-color`.

```
.border{ border-color:rgb(254, 210, 254) }
```

If you want to add a box shadow in that color use:

Here you see how a box with a 4 pixel `rgb(254, 210, 254)` colored shadow looks like.

```
.boxshadow{ -moz-box-shadow:4px 4px 4px  
4px rgb(254, 210, 254); -webkit-box-  
shadow:4px 4px 4px 4px rgb(254, 210, 254);  
box-shadow:4px 4px 4px 4px rgb(254, 210,  
254) }
```

Background

The CSS property to change the background color of an element to CIELCh 89, 27.578, 325.385 is called "background". The background property can be set on classes, ids or directly on the HTML element.

```
.background, #background, body{  
background: rgb(254, 210, 254) }
```

If only the background color should be changed can be used:

```
.background{ background-color: rgb(254,  
210, 254) }
```

This example shows the color as background, it is applied via the CSS property "background".

To optimize and compress your CSS code, you can use our [online CSS compressor and optimizer](#) based on csstidy. If you want to create a linear or radial gradient as background or border, check our [CSS Gradient Generator](#).

Hey! You found this booklet interesting? Support Converting Colors with the new Membership Option!

The pro membership hides all ads, plus gives you double the colors in the color bucket, and more awesome pro features!

[Learn more, Memberships starting at \\$2.50/m!](#)

**Follow me
on Twitter!**

@ConvertingColor