

Converting Colors

CIELCh(10, 13.348, 76.294)

Have a look what the booklet for
CIELCh(10, 13.348, 76.294) contains.

CIELCh(10, 13.054, 75.804)	3
<i>Conversions</i>	4
<i>Details</i>	6
<i>Harmonies</i>	11
<i>Previews</i>	20
<i>Color Blindness Simulation</i>	23
<i>CSS Examples</i>	26

Color

CIELCh(10, 13.054, 75.804)

Conversions

Conversions Part 1

Format	Color
Hex	251906
RGB	37, 25, 6
RGB Percent	15%, 10%, 2%
CMY	0.8534, 0.9003, 0.9775
CMYK	0.00, 0.32, 0.85, 0.85
HSL	37°, 73%, 8%
HSV	37°, 85%, 15%
XYZ	1.1646, 1.1260, 0.3206
YIQ	26.4220, 13.2510, -3.3650

Conversions

Conversions Part 2

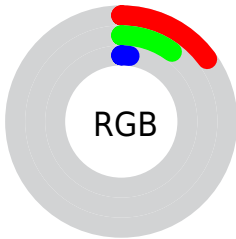
Format	Color
R_YB	26, 37, 6
Decimal	2431238
CIE Lab	10.00, 3.20, 12.66
CIE LCh	10, 13.054, 75.804
Yxy	1.1260, 0.4460, 0.4312
Android (android.graphics.Color)	4280621318 (0xFF251906)
YUV	26.4220, -10.0680, 9.2769
Hunter-Lab	10.6114, 1.0206, 5.6365

Details

The CIELCh color **10, 13.054, 75.804** is a dark color, and the websafe version is hex **000000**. A complement of this color would be **5, 14.861, 279.004**, and the grayscale version is **10, 0.003, 296.813**.

A 20% lighter version of the original color is **30, 12.924, 76.002**, and **0, 0.000, 0.000** is the 20% darker color. If you saturate the color by 10%, you get **9, 13.952, 74.125**, and if you desaturate by 10%, it is **11, 12.164, 77.761**.

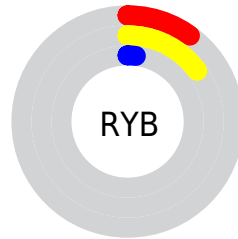
Distribution



Red (15%)

Green (10%)

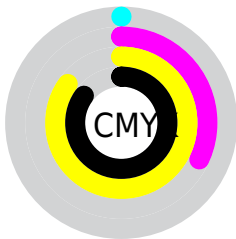
Blue (2%)



Red (10%)

Yellow (15%)

Blue (2%)

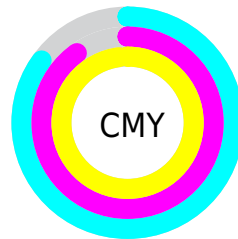


Cyan (0%)

Magenta (32%)

Yellow (85%)

Black (85%)



Cyan (85%)

Magenta (90%)

Yellow (98%)

Brightness & Saturation Gradients

These gradients show how the CIELCh color 10, 13.054, 75.804 changes by changing the brightness by 10 percent. The first figure shows a shift by +10% for each color and the second figure -10%.

Similar to the brightness gradients but the following saturation gradients show a change of the CIELCh color 10, 13.054, 75.804 by changing the saturation by 10% instead.

■ 10, 13.054, 75.804

■ 10, 13.054, 75.804

■ 100, 13.054,
75.804

■ 0, 13.054, 75.804

■ 30, 13.054, 75.804

■ 40, 13.054, 75.804

■ 50, 13.054, 75.804

■ 60, 13.054, 75.804

■ 70, 13.054, 75.804

■ 80, 13.054, 75.804

■ 90, 13.054, 75.804

■ 10, 13.054, 75.804

■ 10, 13.054, 75.804

■ 9, 13.952, 74.125

■ 11, 12.164, 77.761

■ 9, 14.434, 73.321

■ 11, 11.176, 79.779

■ 12, 9.885, 81.456

■ 12, 8.259, 82.806

■ 13, 6.363, 83.881

■ 13, 4.479, 84.911

■ 14, 2.634, 85.909

■ 15, 0.826, 86.823

■ 15, 0.944, 267.979

Harmonies

Complementary

The Complementary color scheme is a pair of colors which are on the opposite of each other on the color wheel.



10, 13.054, 75.804



5, 14.861, 279.004

Rectangle

The Rectangle color scheme consists of four colors that form a rectangle on the color wheel.



10, 13.054, 75.804



10, 13.054, 125.804



10, 13.054, 255.804



10, 13.054, 305.804

Sweetspot

The Sweet Spot groups the original color and five complimentary colors.



10, 13.054, 75.809



18, 5.673, 84.707



5, 16.506, 359.618



8, 3.480, 84.155



63, 0.008, 296.813



9, 0.003, 296.813

Same Dimension

The Same Dimension uses a secret algorithm to generate beautiful new colors.



10, 13.054, 75.809



13, 20.282, 73.856



14, 19.174, 112.064



5, 0.681, 86.474



24, 34.983, 73.844



61, 71.131, 71.138

Inverse Universe

The Inverse Universe completely reimagines the original color for something new.



5, 14.861, 279.004



6, 22.782, 284.248



3, 20.497, 295.422



5, 0.696, 268.259



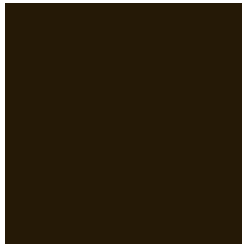
13, 36.229, 290.277



38, 78.891, 294.230

Previews

White Background



This preview shows how the CIE LCh color 10, 13.054, 75.804 looks on a white background.

Color Contrast Check

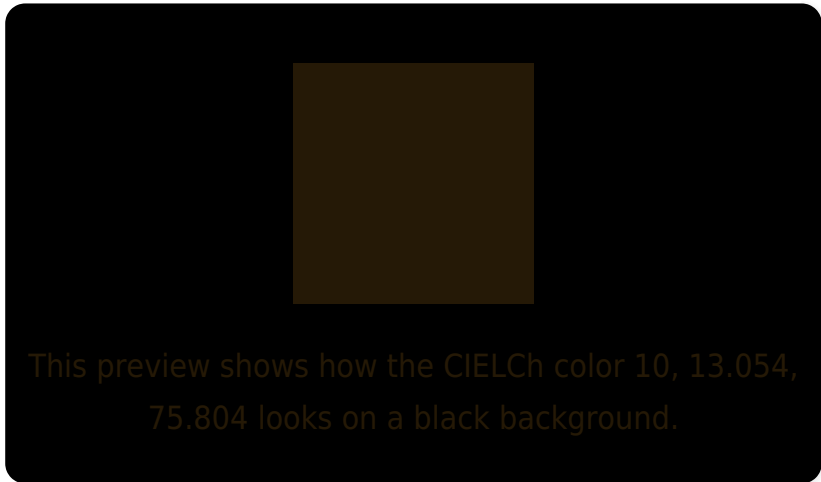
Large Text (above 18pt) WCAG AA ✓ Pass

Any Text WCAG AA ✓ Pass

Large Text (above 18pt) WCAG AAA ✓ Pass

Any Text WCAG AAA ✓ Pass

Black Background



Color Contrast Check

Large Text (above 18pt) WCAG AA × Fail

Any Text WCAG AA × Fail

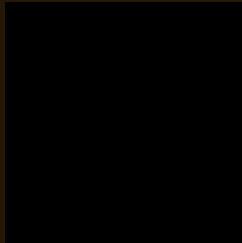
Large Text (above 18pt) WCAG AAA × Fail

Any Text WCAG AAA × Fail

If you want to check with other color combinations, try the [Color Contrast Checker](#).

CIELCh 10, 13.054, 75.804

Background



This preview shows how black text looks on a background with the CIELCh color 10, 13.054, 75.804.

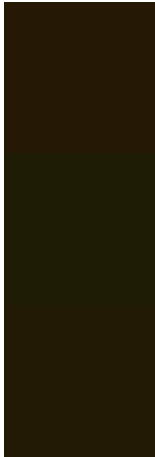


This preview shows how white text looks on a background with the CIELCh color 10, 13.054, 75.804.

Color Blindness Simulation

Color vision deficiency is a very complex topic, and I could not describe the different causes any better than Wikipedia does, so if you want to learn more, you should check out their [article about color blindness](#).

Dichromacy



Original Color

10, 12.711, 74.902

Protanopia

10, 12.739, 100.509

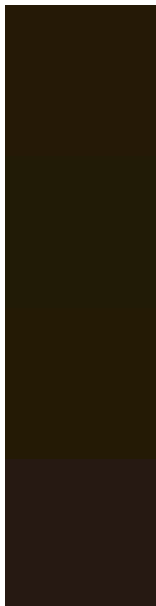
Deuteranopia

10, 12.768, 84.089



Tritanopia
10, 7.536, 16.264

Trichromacy



Original Color
10, 12.711, 74.902

Protanomaly
10, 12.410, 92.087

Deuteranomaly
10, 13.052, 81.642

Tritanomaly
10, 8.917, 53.352

Monochromacy



Original Color
10, 12.711, 74.902

Achromatopsia
10, 0.003, 296.813

Achromatomaly
10, 5.680, 79.794

CSS Examples

Text

The CSS property to change the color of the text to CIELCh 10, 13.054, 75.804 is called "color". The color property can be set on classes, ids or directly on the HTML element.

This example shows how text in the color `rgb(37, 25, 6)` looks like.

```
.text, #text, p{  
    color:rgb(37, 25, 6)  
}
```

If you want to add a text shadow in that color use the text-shadow property, you can generate a text shadow directly with our [CSS Text Shadow Generator](#).

Here you see how black text with a 4 pixel rgb(37, 25, 6) colored shadow looks like.

```
.shadow{ text-shadow: 4px 4px 2px rgb(37, 25, 6) }
```

Border

The CSS property to change the border of an element to CIELCh 10, 13.054, 75.804 is called "border". The border property can be set on classes, ids or directly on the HTML element.

This example shows the color as border, it can be applied via the CSS property "border" or "border-color".

```
.border, #border, table{ border:4px solid rgb(37, 25, 6) }
```

If only the border color should be changed use the property border-color.

```
.border{ border-color:rgb(37, 25, 6) }
```

If you want to add a box shadow in that color use:

Here you see how a box with a 4 pixel rgb(37, 25, 6) colored shadow looks like.

```
.boxshadow{ -moz-box-shadow:4px 4px 4px  
4px rgb(37, 25, 6); -webkit-box-shadow:4px  
4px 4px 4px rgb(37, 25, 6); box-shadow:4px  
4px 4px 4px rgb(37, 25, 6) }
```

Background

The CSS property to change the background color of an element to CIELCh 10, 13.054, 75.804 is called "background". The background property can be set on classes, ids or directly on the HTML element.

```
.background, #background, body{  
background: rgb(37, 25, 6) }
```

If only the background color should be changed can be used:

```
.background{ background-color: rgb(37, 25,  
6) }
```

This example shows the color as background, it is applied via the CSS property "background".

To optimize and compress your CSS code, you can use our [online CSS compressor and optimizer](#) based on csstidy. If you want to create a linear or radial gradient as background or border, check our [CSS Gradient Generator](#).

Hey! You found this booklet interesting? Support Converting Colors with the new Membership Option!

The pro membership hides all ads, plus gives you double the colors in the color bucket, and more awesome pro features!

[Learn more, Memberships starting at \\$2.50/m!](#)

**Follow me
on Twitter!**

@ConvertingColor