

Converting Colors

CIELCh(10, 13.792, 22.651)

Have a look what the booklet for
CIELCh(10, 13.792, 22.651) contains.

CIELCh(10, 13.813, 20.986)	3
<i>Conversions</i>	4
<i>Details</i>	6
<i>Harmonies</i>	11
<i>Previews</i>	20
<i>Color Blindness Simulation</i>	23
<i>CSS Examples</i>	26

Color

CIELCh(10, 13.813, 20.986)

Conversions

Conversions Part 1

Format	Color
Hex	2D1415
RGB	45, 20, 21
RGB Percent	18%, 8%, 8%
CMY	0.8226, 0.9207, 0.9168
CMYK	0.00, 0.55, 0.53, 0.82
HSL	358°, 38%, 13%
HSV	358°, 55%, 18%
XYZ	1.4839, 1.1260, 0.8595
YIQ	27.5890, 14.5790, 5.6110

Conversions

Conversions Part 2

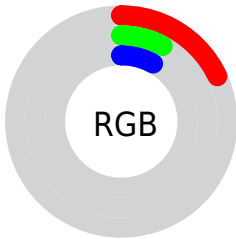
Format	Color
RYB	45, 20, 21
Decimal	2954261
CIELab	10.00, 12.90, 4.95
CIElCh	10, 13.813, 20.986
Yxy	1.1260, 0.4277, 0.3246
Android (android.graphics.Color)	4281144341 (0xFF2D1415)
YUV	27.5890, -3.2484, 15.2694
Hunter-Lab	10.6114, 6.3913, 2.6254

Details

The CIELCh color **10, 13.813, 20.986** is a dark color, and the websafe version is hex **330000**. A complement of this color would be **17, 10.260, 193.306**, and the grayscale version is **10, 0.003, 296.813**.

A 20% lighter version of the original color is **30, 13.659, 21.808**, and **0, 0.000, 0.000** is the 20% darker color. If you saturate the color by 10%, you get **9, 16.421, 20.853**, and if you desaturate by 10%, it is **11, 11.064, 19.809**.

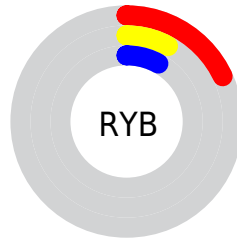
Distribution



Red (18%)

Green (8%)

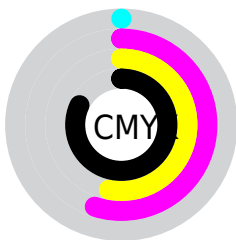
Blue (8%)



Red (18%)

Yellow (8%)

Blue (8%)

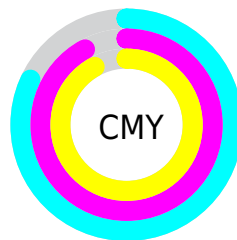


Cyan (0%)

Magenta (55%)

Yellow (53%)

Black (82%)



Cyan (82%)

Magenta (92%)

Yellow (92%)

Brightness & Saturation Gradients

These gradients show how the CIELCh color 10, 13.813, 20.986 changes by changing the brightness by 10 percent. The first figure shows a shift by +10% for each color and the second figure -10%.

Similar to the brightness gradients but the following saturation gradients show a change of the CIELCh color 10, 13.813, 20.986 by changing the saturation by 10% instead.

■ 10, 13.813, 20.986

■ 10, 13.813, 20.986

■ 100, 13.813,
20.986

■ 0, 13.813, 20.986

■ 30, 13.813, 20.986

■ 40, 13.813, 20.986

■ 50, 13.813, 20.986

■ 60, 13.813, 20.986

■ 70, 13.813, 20.986

■ 80, 13.813, 20.986

■ 90, 13.813, 20.986

■ 10, 13.813, 20.986

■ 10, 13.813, 20.986

■ 9, 16.421, 20.853

■ 11, 11.064, 19.809

■ 8, 18.765, 20.040

■ 13, 8.395, 18.664

■ 7, 20.688, 19.299

■ 14, 5.848, 17.722

■ 6, 22.504, 18.620

■ 16, 3.434, 16.930

■ 5, 23.323, 18.366

■ 18, 1.157, 16.179

■ 19, 0.988, 196.009

■ 21, 3.008, 195.422

■ 23, 4.912, 195.007

■ 24, 6.709, 194.661

Harmonies

Complementary

The Complementary color scheme is a pair of colors which are on the opposite of each other on the color wheel.



10, 13.813, 20.986



17, 10.260, 193.306

Rectangle

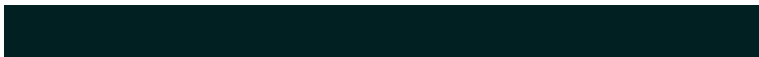
The Rectangle color scheme consists of four colors that form a rectangle on the color wheel.



10, 13.813, 20.986



10, 13.813, 70.986



10, 13.813, 200.986



10, 13.813, 250.986

Sweetspot

The Sweet Spot groups the original color and five complimentary colors.



10, 13.812, 20.989



21, 4.783, 17.129



11, 20.650, 325.324



9, 3.237, 17.129



65, 0.008, 296.813



12, 0.003, 296.813

Same Dimension

The Same Dimension uses a secret algorithm to generate beautiful new colors.



10, 13.812, 20.989



12, 21.106, 23.785



13, 11.324, 64.628



7, 1.115, 16.088



16, 43.144, 31.933



45, 90.022, 38.649

Inverse Universe

The Inverse Universe completely reimagines the original color for something new.



10, 13.812, 20.989



12, 21.106, 23.785



13, 9.543, 257.684



7, 1.115, 16.088



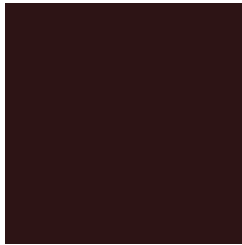
16, 43.144, 31.933



45, 90.022, 38.649

Previews

White Background



This preview shows how the CIELCh color 10, 13.813, 20.986 looks on a white background.

Color Contrast Check

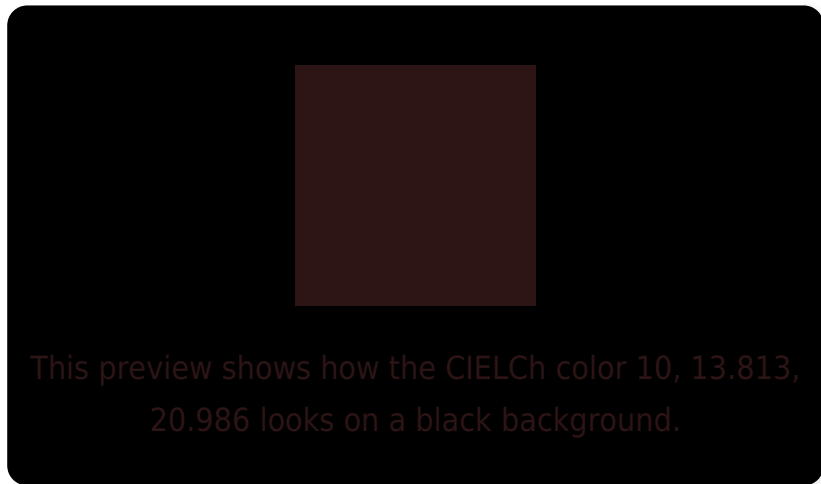
Large Text (above 18pt) WCAG AA ✓ Pass

Any Text WCAG AA ✓ Pass

Large Text (above 18pt) WCAG AAA ✓ Pass

Any Text WCAG AAA ✓ Pass

Black Background



Color Contrast Check

Large Text (above 18pt) WCAG AA × Fail

Any Text WCAG AA × Fail

Large Text (above 18pt) WCAG AAA × Fail

Any Text WCAG AAA × Fail

If you want to check with other color combinations, try the [Color Contrast Checker](#).

CIELCh 10, 13.813, 20.986

Background



This preview shows how black text looks on a background with the CIELCh color 10, 13.813, 20.986.

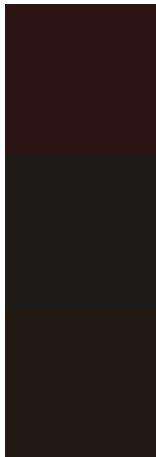


This preview shows how white text looks on a background with the CIELCh color 10, 13.813, 20.986.

Color Blindness Simulation

Color vision deficiency is a very complex topic, and I could not describe the different causes any better than Wikipedia does, so if you want to learn more, you should check out their [article about color blindness](#).

Dichromacy



Original Color

10, 13.813, 20.986

Protanopia

10, 2.434, 83.849

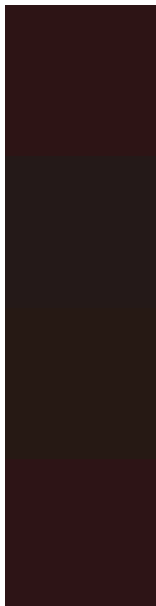
Deuteranopia

10, 6.393, 71.265



Tritanopia
10, 13.723, 18.194

Trichromacy



Original Color

10, 13.813, 20.986

Protanomaly

10, 6.007, 28.090

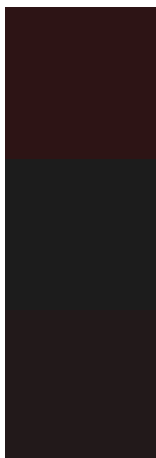
Deuteranomaly

10, 8.198, 46.599

Tritanomaly

10, 13.723, 18.194

Monochromacy



Original Color

10, 13.813, 20.986

Achromatopsia

10, 0.003, 296.813

Achromatomaly

10, 4.799, 12.100

CSS Examples

Text

The CSS property to change the color of the text to CIELCh 10, 13.813, 20.986 is called "color". The color property can be set on classes, ids or directly on the HTML element.

This example shows how text in the color `rgb(45, 20, 21)` looks like.

```
.text, #text, p{  
    color:rgb(45, 20, 21)  
}
```

If you want to add a text shadow in that color use the text-shadow property, you can generate a text shadow directly with our [CSS Text Shadow Generator](#).

Here you see how black text with a 4 pixel rgb(45, 20, 21) colored shadow looks like.

```
.shadow{ text-shadow: 4px 4px 2px rgb(45, 20, 21) }
```

Border

The CSS property to change the border of an element to CIELCh 10, 13.813, 20.986 is called "border". The border property can be set on classes, ids or directly on the HTML element.

This example shows the color as border, it can be applied via the CSS property "border" or "border-color".

```
.border, #border, table{ border:4px solid rgb(45, 20, 21) }
```

If only the border color should be changed use the property `border-color`.

```
.border{ border-color:rgb(45, 20, 21) }
```

If you want to add a box shadow in that color use:

Here you see how a box with a 4 pixel `rgb(45, 20, 21)` colored shadow looks like.

```
.boxshadow{ -moz-box-shadow:4px 4px 4px  
4px rgb(45, 20, 21); -webkit-box-  
shadow:4px 4px 4px 4px rgb(45, 20, 21);  
box-shadow:4px 4px 4px 4px rgb(45, 20, 21)  
}
```

Background

The CSS property to change the background color of an element to CIELCh 10, 13.813, 20.986 is called "background". The background property can be set on classes, ids or directly on the HTML element.

```
.background, #background, body{  
background: rgb(45, 20, 21) }
```

If only the background color should be changed can be used:

```
.background{ background-color: rgb(45, 20,  
21) }
```

This example shows the color as background, it is applied via the CSS property "background".

To optimize and compress your CSS code, you can use our [online CSS compressor and optimizer](#) based on csstidy. If you want to create a linear or radial gradient as background or border, check our [CSS Gradient Generator](#).

Hey! You found this booklet interesting? Support Converting Colors with the new Membership Option!

The pro membership hides all ads, plus gives you double the colors in the color bucket, and more awesome pro features!

[Learn more, Memberships starting at \\$2.50/m!](#)

**Follow me
on Twitter!**

@ConvertingColor