

Converting Colors

CIELCh(10, 14.887, 46.061)

Have a look what the booklet for
CIELCh(10, 14.887, 46.061) contains.

CIELCh(10, 14.557, 47.467)	3
<i>Conversions</i>	4
<i>Details</i>	6
<i>Harmonies</i>	11
<i>Previews</i>	20
<i>Color Blindness Simulation</i>	23
<i>CSS Examples</i>	26

Color

CIELCh(10, 14.557, 47.467)

Conversions

Conversions Part 1

Format	Color
Hex	2C160B
RGB	44, 22, 11
RGB Percent	17%, 9%, 4%
CMY	0.8279, 0.9142, 0.9576
CMYK	0.00, 0.50, 0.75, 0.83
HSL	20°, 60%, 11%
HSV	20°, 75%, 17%
XYZ	1.3777, 1.1260, 0.4555
YIQ	27.3240, 16.6430, 1.2430

Conversions

Conversions Part 2

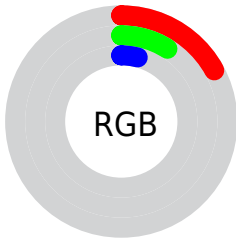
Format	Color
RYB	44, 28, 11
Decimal	2889227
CIELab	10.00, 9.84, 10.73
CIElCh	10, 14.557, 47.467
Yxy	1.1260, 0.4656, 0.3805
Android (android.graphics.Color)	4281079307 (0xFF2C160B)
YUV	27.3240, -8.0477, 14.6249
Hunter-Lab	10.6114, 4.6044, 4.8832

Details

The CIELCh color **10, 14.557, 47.467** is a dark color, and the websafe version is hex **330000**. A complement of this color would be **11, 10.926, 246.250**, and the grayscale version is **10, 0.003, 296.813**.

A 20% lighter version of the original color is **30, 14.374, 47.156**, and **0, 0.000, 0.000** is the 20% darker color. If you saturate the color by 10%, you get **9, 16.048, 44.364**, and if you desaturate by 10%, it is **11, 12.925, 50.416**.

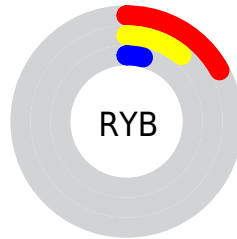
Distribution



Red (17%)

Green (9%)

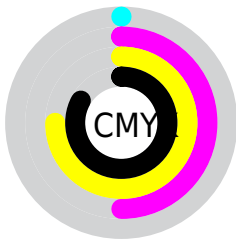
Blue (4%)



Red (17%)

Yellow (11%)

Blue (4%)

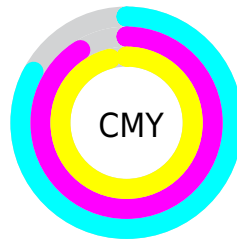


Cyan (0%)

Magenta (50%)

Yellow (75%)

Black (83%)



Cyan (83%)

Magenta (91%)

Yellow (96%)

Brightness & Saturation Gradients

These gradients show how the CIELCh color 10, 14.557, 47.467 changes by changing the brightness by 10 percent. The first figure shows a shift by +10% for each color and the second figure -10%.

Similar to the brightness gradients but the following saturation gradients show a change of the CIELCh color 10, 14.557, 47.467 by changing the saturation by 10% instead.

■ 10, 14.557, 47.467

■ 10, 14.557, 47.467

■ 100, 14.557,
47.467

■ 0, 14.557, 47.467

■ 30, 14.557, 47.467

■ 40, 14.557, 47.467

■ 50, 14.557, 47.467

■ 60, 14.557, 47.467

■ 70, 14.557, 47.467

■ 80, 14.557, 47.467

■ 90, 14.557, 47.467

■ 10, 14.557, 47.467

■ 10, 14.557, 47.467

■ 9, 16.048, 44.364

■ 11, 12.925, 50.416

■ 8, 17.556, 41.985

■ 12, 11.017, 52.459

■ 8, 18.250, 41.125

■ 13, 8.822, 53.221

■ 14, 6.674, 53.733

■ 15, 4.647, 54.287

■ 16, 2.735, 54.865

■ 17, 0.929, 55.376

■ 18, 0.780, 236.431

■ 20, 2.400, 236.947

Harmonies

Complementary

The Complementary color scheme is a pair of colors which are on the opposite of each other on the color wheel.



10, 14.557, 47.467



11, 10.926, 246.250

Rectangle

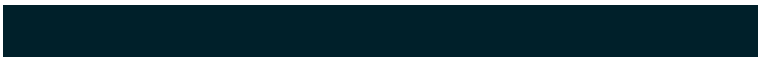
The Rectangle color scheme consists of four colors that form a rectangle on the color wheel.



10, 14.557, 47.467



10, 14.557, 97.467



10, 14.557, 227.467



10, 14.557, 277.467

Sweetspot

The Sweet Spot groups the original color and five complimentary colors.



10, 14.557, 47.472



20, 5.166, 54.350



8, 21.310, 340.987



8, 3.364, 52.817



64, 0.008, 296.813



10, 0.003, 296.813

Same Dimension

The Same Dimension uses a secret algorithm to generate beautiful new colors.



10, 14.557, 47.472



12, 22.388, 46.939



15, 17.964, 95.547



7, 0.910, 54.550



20, 38.535, 49.032



51, 81.620, 48.869

Inverse Universe

The Inverse Universe completely reimagines the original color for something new.



11, 10.926, 246.250



14, 15.089, 251.546



6, 20.418, 290.957



7, 0.913, 237.267



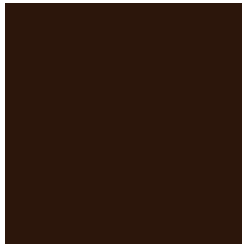
23, 22.688, 258.006



56, 45.835, 262.911

Previews

White Background



This preview shows how the CIELCh color 10, 14.557, 47.467 looks on a white background.

Color Contrast Check

Large Text (above 18pt) WCAG AA ✓ Pass

Any Text WCAG AA ✓ Pass

Large Text (above 18pt) WCAG AAA ✓ Pass

Any Text WCAG AAA ✓ Pass

Black Background



Color Contrast Check

Large Text (above 18pt) WCAG AA × Fail

Any Text WCAG AA × Fail

Large Text (above 18pt) WCAG AAA × Fail

Any Text WCAG AAA × Fail

If you want to check with other color combinations, try the [Color Contrast Checker](#).

CIELCh 10, 14.557, 47.467

Background



This preview shows how black text looks on a background with the CIELCh color 10, 14.557, 47.467.

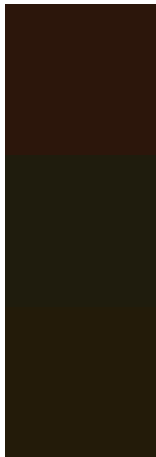


This preview shows how white text looks on a background with the CIELCh color 10, 14.557, 47.467.

Color Blindness Simulation

Color vision deficiency is a very complex topic, and I could not describe the different causes any better than Wikipedia does, so if you want to learn more, you should check out their [article about color blindness](#).

Dichromacy



Original Color

10, 14.557, 47.467

Protanopia

10, 9.843, 98.323

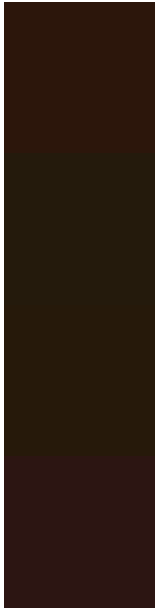
Deuteranopia

10, 11.700, 84.855



Tritanopia
10, 12.656, 20.387

Trichromacy



Original Color

10, 14.557, 47.467

Protanomaly

10, 10.532, 75.240

Deuteranomaly

10, 11.781, 68.556

Tritanomaly

10, 13.254, 31.391

Monochromacy



Original Color

10, 14.557, 47.467

Achromatopsia

10, 0.003, 296.813

Achromatomaly

10, 5.304, 53.254

CSS Examples

Text

The CSS property to change the color of the text to CIELCh 10, 14.557, 47.467 is called "color". The color property can be set on classes, ids or directly on the HTML element.

This example shows how text in the color `rgb(44, 22, 11)` looks like.

```
.text, #text, p{  
    color:rgb(44, 22, 11)  
}
```

If you want to add a text shadow in that color use the text-shadow property, you can generate a text shadow directly with our [CSS Text Shadow Generator](#).

Here you see how black text with a 4 pixel rgb(44, 22, 11) colored shadow looks like.

```
.shadow{ text-shadow: 4px 4px 2px rgb(44, 22, 11) }
```

Border

The CSS property to change the border of an element to CIELCh 10, 14.557, 47.467 is called "border". The border property can be set on classes, ids or directly on the HTML element.

This example shows the color as border, it can be applied via the CSS property "border" or "border-color".

```
.border, #border, table{ border:4px solid rgb(44, 22, 11) }
```

If only the border color should be changed use the property `border-color`.

```
.border{ border-color:rgb(44, 22, 11) }
```

If you want to add a box shadow in that color use:

Here you see how a box with a 4 pixel `rgb(44, 22, 11)` colored shadow looks like.

```
.boxshadow{ -moz-box-shadow:4px 4px 4px  
4px rgb(44, 22, 11); -webkit-box-  
shadow:4px 4px 4px 4px rgb(44, 22, 11);  
box-shadow:4px 4px 4px 4px rgb(44, 22, 11)  
}
```

Background

The CSS property to change the background color of an element to CIELCh 10, 14.557, 47.467 is called "background". The background property can be set on classes, ids or directly on the HTML element.

```
.background, #background, body{  
background: rgb(44, 22, 11) }
```

If only the background color should be changed can be used:

```
.background{ background-color: rgb(44, 22,  
11) }
```

This example shows the color as background, it is applied via the CSS property "background".

To optimize and compress your CSS code, you can use our [online CSS compressor and optimizer](#) based on csstidy. If you want to create a linear or radial gradient as background or border, check our [CSS Gradient Generator](#).

Hey! You found this booklet interesting? Support Converting Colors with the new Membership Option!

The pro membership hides all ads, plus gives you double the colors in the color bucket, and more awesome pro features!

[Learn more, Memberships starting at \\$2.50/m!](#)

**Follow me
on Twitter!**

@ConvertingColor