

Converting Colors

CIELCh(10, 15.562, 36.420)

Have a look what the booklet for
CIELCh(10, 15.562, 36.420) contains.

CIELCh(10, 15.532, 36.089)	3
<i>Conversions</i>	4
<i>Details</i>	6
<i>Harmonies</i>	11
<i>Previews</i>	20
<i>Color Blindness Simulation</i>	23
<i>CSS Examples</i>	26

Color

CIELCh(10, 15.532, 36.089)

Conversions

Conversions Part 1

Format	Color
Hex	2E140E
RGB	46, 20, 14
RGB Percent	18%, 8%, 5%
CMY	0.8188, 0.9208, 0.9439
CMYK	0.00, 0.56, 0.69, 0.82
HSL	11°, 53%, 12%
HSV	11°, 69%, 18%
XYZ	1.4716, 1.1260, 0.5658
YIQ	27.0900, 17.4220, 3.6460

Conversions

Conversions Part 2

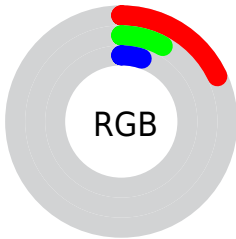
Format	Color
R_{YB}	46, 21, 14
Decimal	3019790
CIE Lab	10.00, 12.55, 9.15
CIE LCh	10, 15.532, 36.089
Yxy	1.1260, 0.4652, 0.3560
Android (android.graphics.Color)	4281209870 (0xFF2E140E)
YUV	27.0900, -6.4534, 16.5841
Hunter-Lab	10.6114, 6.1849, 4.2668

Details

The CIELCh color **10, 15.532, 36.089** is a dark color, and the websafe version is hex **330000**. A complement of this color would be **15, 10.377, 221.601**, and the grayscale version is **10, 0.003, 296.813**.

A 20% lighter version of the original color is **30, 15.630, 35.787**, and **0, 0.000, 0.000** is the 20% darker color. If you saturate the color by 10%, you get **9, 17.553, 33.564**, and if you desaturate by 10%, it is **11, 13.276, 37.827**.

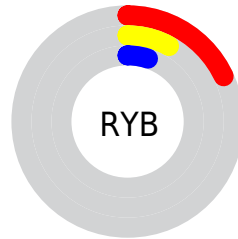
Distribution



Red (18%)

Green (8%)

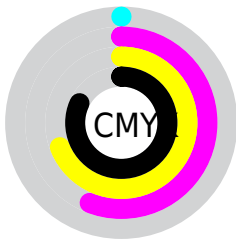
Blue (5%)



Red (18%)

Yellow (8%)

Blue (5%)

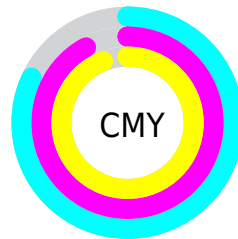


Cyan (0%)

Magenta (56%)

Yellow (69%)

Black (82%)



Cyan (82%)

Magenta (92%)

Yellow (94%)

Brightness & Saturation Gradients

These gradients show how the CIELCh color 10, 15.532, 36.089 changes by changing the brightness by 10 percent. The first figure shows a shift by +10% for each color and the second figure -10%.

Similar to the brightness gradients but the following saturation gradients show a change of the CIELCh color 10, 15.532, 36.089 by changing the saturation by 10% instead.

■ 10, 15.532, 36.089

■ 10, 15.532, 36.089

■ 100, 15.532,
36.089

■ 0, 15.532, 36.089

■ 30, 15.532, 36.089

■ 40, 15.532, 36.089

■ 50, 15.532, 36.089

■ 60, 15.532, 36.089

■ 70, 15.532, 36.089

■ 80, 15.532, 36.089

■ 90, 15.532, 36.089

■ 10, 15.532, 36.089

■ 10, 15.532, 36.089

■ 9, 17.553, 33.564

■ 11, 13.276, 37.827

■ 8, 19.454, 31.418

■ 12, 10.766, 38.069

■ 7, 21.157, 30.547

■ 14, 8.285, 37.798

■ 7, 21.307, 30.505

■ 15, 5.957, 37.648

■ 16, 3.777, 37.590

■ 18, 1.737, 37.572

■ 19, 0.173, 218.944

■ 21, 1.962, 218.056

■ 22, 3.643, 218.209

Harmonies

Complementary

The Complementary color scheme is a pair of colors which are on the opposite of each other on the color wheel.



10, 15.532, 36.089



15, 10.377, 221.601

Rectangle

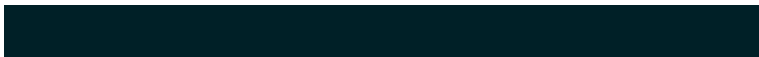
The Rectangle color scheme consists of four colors that form a rectangle on the color wheel.



10, 15.532, 36.089



10, 15.532, 86.089



10, 15.532, 216.089



10, 15.532, 266.089

Sweetspot

The Sweet Spot groups the original color and five complimentary colors.



10, 15.531, 36.093



22, 5.325, 37.600



10, 22.830, 333.663



9, 3.519, 37.587



65, 0.008, 296.813



12, 0.003, 296.813

Same Dimension

The Same Dimension uses a secret algorithm to generate beautiful new colors.



10, 15.531, 36.093



13, 24.800, 37.608



15, 15.817, 84.789



7, 0.954, 36.889



17, 40.986, 40.240



47, 87.800, 42.843

Inverse Universe

The Inverse Universe completely reimagines the original color for something new.



15, 10.377, 221.601



19, 14.263, 224.397



9, 16.471, 283.268



7, 0.947, 218.689



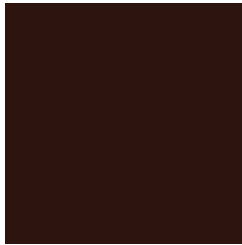
27, 19.850, 229.345



66, 38.317, 232.736

Previews

White Background



This preview shows how the CIELCh color 10, 15.532, 36.089 looks on a white background.

Color Contrast Check

Large Text (above 18pt) WCAG AA ✓ Pass

Any Text WCAG AA ✓ Pass

Large Text (above 18pt) WCAG AAA ✓ Pass

Any Text WCAG AAA ✓ Pass

Black Background



Color Contrast Check

Large Text (above 18pt) WCAG AA × Fail

Any Text WCAG AA × Fail

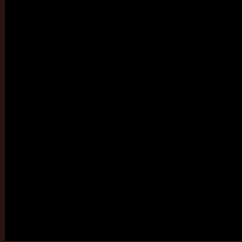
Large Text (above 18pt) WCAG AAA × Fail

Any Text WCAG AAA × Fail

If you want to check with other color combinations, try the [Color Contrast Checker](#).

CIELCh 10, 15.532, 36.089

Background



This preview shows how black text looks on a background with the CIELCh color 10, 15.532, 36.089.



This preview shows how white text looks on a background with the CIELCh color 10, 15.532, 36.089.

Color Blindness Simulation

Color vision deficiency is a very complex topic, and I could not describe the different causes any better than Wikipedia does, so if you want to learn more, you should check out their [article about color blindness](#).

Dichromacy



Original Color

10, 15.532, 36.089

Protanopia

10, 7.780, 95.894

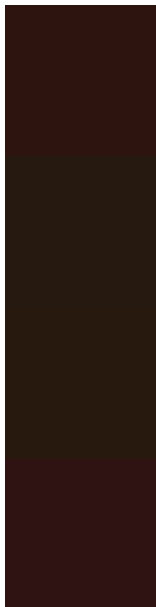
Deuteranopia

10, 10.132, 81.344



Tritanopia
10, 15.405, 19.441

Trichromacy



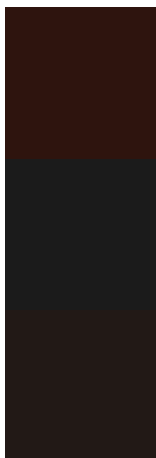
Original Color
10, 15.532, 36.089

Protanomaly
10, 9.199, 60.777

Deuteranomaly
10, 11.218, 62.403

Tritanomaly
10, 15.632, 24.064

Monochromacy



Original Color
10, 15.532, 36.089

Achromatopsia
10, 0.003, 296.813

Achromatomaly
10, 5.432, 44.329

CSS Examples

Text

The CSS property to change the color of the text to CIELCh 10, 15.532, 36.089 is called "color". The color property can be set on classes, ids or directly on the HTML element.

This example shows how text in the color `rgb(46, 20, 14)` looks like.

```
.text, #text, p{  
    color:rgb(46, 20, 14)  
}
```

If you want to add a text shadow in that color use the text-shadow property, you can generate a text shadow directly with our [CSS Text Shadow Generator](#).

Here you see how black text with a 4 pixel rgb(46, 20, 14) colored shadow looks like.

```
.shadow{ text-shadow: 4px 4px 2px rgb(46, 20, 14) }
```

Border

The CSS property to change the border of an element to CIELCh 10, 15.532, 36.089 is called "border". The border property can be set on classes, ids or directly on the HTML element.

This example shows the color as border, it can be applied via the CSS property "border" or "border-color".

```
.border, #border, table{ border:4px solid rgb(46, 20, 14) }
```

If only the border color should be changed use the property `border-color`.

```
.border{ border-color:rgb(46, 20, 14) }
```

If you want to add a box shadow in that color use:

Here you see how a box with a 4 pixel `rgb(46, 20, 14)` colored shadow looks like.

```
.boxshadow{ -moz-box-shadow:4px 4px 4px  
4px rgb(46, 20, 14); -webkit-box-  
shadow:4px 4px 4px 4px rgb(46, 20, 14);  
box-shadow:4px 4px 4px 4px rgb(46, 20, 14)  
}
```

Background

The CSS property to change the background color of an element to CIELCh 10, 15.532, 36.089 is called "background". The background property can be set on classes, ids or directly on the HTML element.

```
.background, #background, body{  
background: rgb(46, 20, 14) }
```

If only the background color should be changed can be used:

```
.background{ background-color: rgb(46, 20,  
14) }
```

This example shows the color as background, it is applied via the CSS property "background".

To optimize and compress your CSS code, you can use our [online CSS compressor and optimizer](#) based on csstidy. If you want to create a linear or radial gradient as background or border, check our [CSS Gradient Generator](#).

Hey! You found this booklet interesting? Support Converting Colors with the new Membership Option!

The pro membership hides all ads, plus gives you double the colors in the color bucket, and more awesome pro features!

[Learn more, Memberships starting at \\$2.50/m!](#)

**Follow me
on Twitter!**

@ConvertingColor