

Converting Colors

CIELCh(10, 16.674, 46.417)

Have a look what the booklet for
CIELCh(10, 16.674, 46.417) contains.

CIELCh(10, 16.518, 46.703)	3
<i>Conversions</i>	4
<i>Details</i>	6
<i>Harmonies</i>	11
<i>Previews</i>	20
<i>Color Blindness Simulation</i>	23
<i>CSS Examples</i>	26

Color

CIELCh(10, 16.518, 46.703)

Conversions

Conversions Part 1

Format	Color
Hex	2E1508
RGB	46, 21, 8
RGB Percent	18%, 8%, 3%
CMY	0.8202, 0.9182, 0.9696
CMYK	0.00, 0.55, 0.83, 0.82
HSL	21°, 71%, 11%
HSV	21°, 83%, 18%
XYZ	1.4287, 1.1260, 0.3649
YIQ	26.9930, 19.0730, 1.2570

Conversions

Conversions Part 2

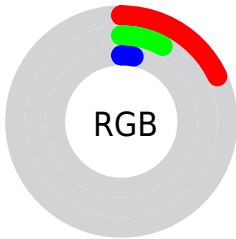
Format	Color
RYB	46, 28, 8
Decimal	3020040
CIELab	10.00, 11.33, 12.02
CIELCh	10, 16.518, 46.703
Yxy	1.1260, 0.4893, 0.3857
Android (android.graphics.Color)	4281210120 (0xFF2E1508)
YUV	26.9930, -9.3635, 16.6691
Hunter-Lab	10.6114, 5.4628, 5.3891

Details

The CIELCh color **10, 16.518, 46.703** is a dark color, and the websafe version is hex **330000**. A complement of this color would be **11, 12.278, 249.782**, and the grayscale version is **10, 0.003, 296.813**.

A 20% lighter version of the original color is **30, 16.598, 46.104**, and **0, 0.000, 0.000** is the 20% darker color. If you saturate the color by 10%, you get **9, 18.085, 44.172**, and if you desaturate by 10%, it is **11, 14.941, 49.811**.

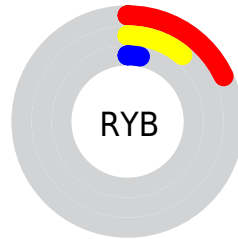
Distribution



Red (18%)

Green (8%)

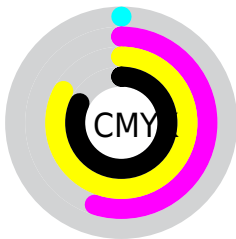
Blue (3%)



Red (18%)

Yellow (11%)

Blue (3%)

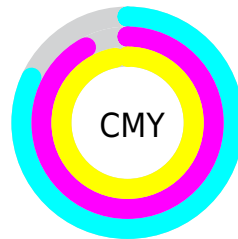


Cyan (0%)

Magenta (55%)

Yellow (83%)

Black (82%)



Cyan (82%)

Magenta (92%)

Yellow (97%)

Brightness & Saturation Gradients

These gradients show how the CIELCh color 10, 16.518, 46.703 changes by changing the brightness by 10 percent. The first figure shows a shift by +10% for each color and the second figure -10%.

Similar to the brightness gradients but the following saturation gradients show a change of the CIELCh color 10, 16.518, 46.703 by changing the saturation by 10% instead.

■ 10, 16.518, 46.703

■ 10, 16.518, 46.703

■ 100, 16.518,
46.703

■ 0, 16.518, 46.703

■ 30, 16.518, 46.703

■ 40, 16.518, 46.703

■ 50, 16.518, 46.703

■ 60, 16.518, 46.703

■ 70, 16.518, 46.703

■ 80, 16.518, 46.703

■ 90, 16.518, 46.703

■ 10, 16.518, 46.703

■ 10, 16.518, 46.703

■ 9, 18.085, 44.172

■ 11, 14.941, 49.811

■ 8, 19.174, 42.804

■ 12, 13.121, 52.344

■ 13, 10.961, 53.763

■ 14, 8.635, 54.283

■ 15, 6.435, 54.848

■ 16, 4.359, 55.449

■ 17, 2.399, 56.065

■ 19, 0.548, 56.493

■ 20, 1.205, 237.642

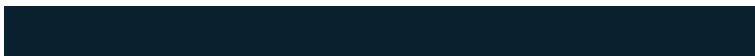
Harmonies

Complementary

The Complementary color scheme is a pair of colors which are on the opposite of each other on the color wheel.



10, 16.518, 46.703



11, 12.278, 249.782

Rectangle

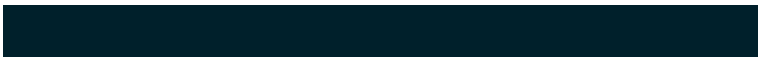
The Rectangle color scheme consists of four colors that form a rectangle on the color wheel.



10, 16.518, 46.703



10, 16.518, 96.703



10, 16.518, 226.703



10, 16.518, 276.703

Sweetspot

The Sweet Spot groups the original color and five complimentary colors.



10, 16.518, 46.707



21, 5.866, 55.250



8, 23.760, 341.813



9, 4.019, 54.859



65, 0.008, 296.813



12, 0.003, 296.813

Same Dimension

The Same Dimension uses a secret algorithm to generate beautiful new colors.



10, 16.518, 46.707



12, 25.560, 46.394



16, 19.989, 94.787



7, 0.910, 55.648



20, 38.401, 49.676



51, 81.214, 49.358

Inverse Universe

The Inverse Universe completely reimagines the original color for something new.



11, 12.278, 249.782



14, 17.150, 255.866



5, 23.192, 291.847



7, 0.914, 238.391



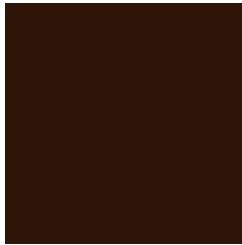
22, 23.007, 259.497



56, 46.606, 264.411

Previews

White Background



This preview shows how the CIELCh color 10, 16.518, 46.703 looks on a white background.

Color Contrast Check

Large Text (above 18pt) WCAG AA ✓ Pass

Any Text WCAG AA ✓ Pass

Large Text (above 18pt) WCAG AAA ✓ Pass

Any Text WCAG AAA ✓ Pass

Black Background



Color Contrast Check

Large Text (above 18pt) WCAG AA × Fail

Any Text WCAG AA × Fail

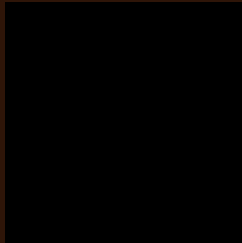
Large Text (above 18pt) WCAG AAA × Fail

Any Text WCAG AAA × Fail

If you want to check with other color combinations, try the [Color Contrast Checker](#).

CIELCh 10, 16.518, 46.703

Background



This preview shows how black text looks on a background with the CIELCh color 10, 16.518, 46.703.



This preview shows how white text looks on a background with the CIELCh color 10, 16.518, 46.703.

Color Blindness Simulation

Color vision deficiency is a very complex topic, and I could not describe the different causes any better than Wikipedia does, so if you want to learn more, you should check out their [article about color blindness](#).

Dichromacy



Original Color

10, 16.518, 46.703

Protanopia

10, 11.247, 96.426

Deuteranopia

10, 13.449, 84.982



Tritanopia
10, 14.363, 21.319

Trichromacy



Original Color
10, 16.518, 46.703

Protanomaly
10, 11.702, 71.896

Deuteranomaly
10, 13.903, 68.804

Tritanomaly
10, 15.145, 32.560

Monochromacy



Original Color
10, 16.518, 46.703

Achromatopsia
10, 0.003, 296.813

Achromatomaly
10, 6.189, 55.366

CSS Examples

Text

The CSS property to change the color of the text to CIELCh 10, 16.518, 46.703 is called "color". The color property can be set on classes, ids or directly on the HTML element.

This example shows how text in the color `rgb(46, 21, 8)` looks like.

```
.text, #text, p{  
    color:rgb(46, 21, 8)  
}
```

If you want to add a text shadow in that color use the text-shadow property, you can generate a text shadow directly with our [CSS Text Shadow Generator](#).

Here you see how black text with a 4 pixel rgb(46, 21, 8) colored shadow looks like.

```
.shadow{ text-shadow: 4px 4px 2px rgb(46, 21, 8) }
```

Border

The CSS property to change the border of an element to CIELCh 10, 16.518, 46.703 is called "border". The border property can be set on classes, ids or directly on the HTML element.

This example shows the color as border, it can be applied via the CSS property "border" or "border-color".

```
.border, #border, table{ border:4px solid rgb(46, 21, 8) }
```

If only the border color should be changed use the property `border-color`.

```
.border{ border-color:rgb(46, 21, 8) }
```

If you want to add a box shadow in that color use:

Here you see how a box with a 4 pixel `rgb(46, 21, 8)` colored shadow looks like.

```
.boxshadow{ -moz-box-shadow:4px 4px 4px  
4px rgb(46, 21, 8); -webkit-box-shadow:4px  
4px 4px 4px rgb(46, 21, 8); box-shadow:4px  
4px 4px 4px rgb(46, 21, 8) }
```

Background

The CSS property to change the background color of an element to CIELCh 10, 16.518, 46.703 is called "background". The background property can be set on classes, ids or directly on the HTML element.

```
.background, #background, body{  
background: rgb(46, 21, 8) }
```

If only the background color should be changed can be used:

```
.background{ background-color: rgb(46, 21,  
8) }
```

This example shows the color as background, it is applied via the CSS property "background".

To optimize and compress your CSS code, you can use our [online CSS compressor and optimizer](#) based on csstidy. If you want to create a linear or radial gradient as background or border, check our [CSS Gradient Generator](#).

Hey! You found this booklet interesting? Support Converting Colors with the new Membership Option!

The pro membership hides all ads, plus gives you double the colors in the color bucket, and more awesome pro features!

[Learn more, Memberships starting at \\$2.50/m!](#)

**Follow me
on Twitter!**

@ConvertingColor