

Converting Colors

CIELCh(10, 71.916, 84.369)

Have a look what the booklet for
CIELCh(10, 71.916, 84.369) contains.

CIELCh(10, 16.910, 63.388)	3
<i>Conversions</i>	4
<i>Details</i>	6
<i>Harmonies</i>	11
<i>Previews</i>	20
<i>Color Blindness Simulation</i>	23
<i>CSS Examples</i>	26

Color

CIELCh(10, 16.910, 63.388)

Conversions

Conversions Part 1

Format	Color
Hex	2B1700
RGB	43, 23, 0
RGB Percent	17%, 9%, 0%
CMY	0.8314, 0.9098, 1.0000
CMYK	0.00, 0.47, 1.00, 0.83
HSL	32°, 100%, 8%
HSV	32°, 100%, 17%
XYZ	1.3023, 1.1260, 0.1484
YIQ	26.3580, 19.3030, -2.9130

Conversions

Conversions Part 2

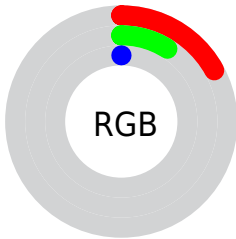
Format	Color
R_{YB}	37, 43, 0
Decimal	2823936
CIE Lab	10.00, 7.57, 15.12
CIE LCh	10, 16.910, 63.388
Yxy	1.1260, 0.5054, 0.4370
Android (android.graphics.Color)	4281014016 (0xFF2B1700)
YUV	26.3580, -12.9945, 14.5950
Hunter-Lab	10.6114, 3.3361, 6.5987

Details

The CIELCh color **10, 16.910, 63.388** is a dark color, and the websafe version is hex **330000**. A complement of this color would be **6, 17.914, 275.887**, and the grayscale version is **9, 0.003, 296.813**.

A 20% lighter version of the original color is **30, 16.872, 62.665**, and **0, 0.000, 0.000** is the 20% darker color. If you saturate the color by 10%, you get **10, 16.907, 63.384**, and if you desaturate by 10%, it is **11, 15.761, 65.413**.

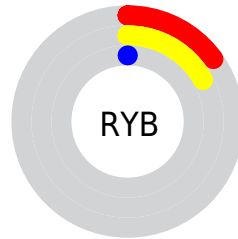
Distribution



Red (17%)

Green (9%)

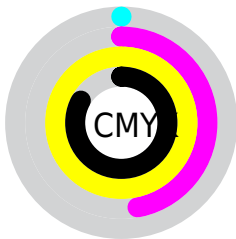
Blue (0%)



Red (15%)

Yellow (17%)

Blue (0%)

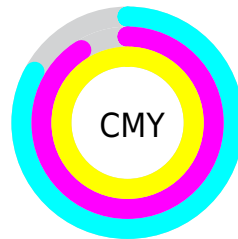


Cyan (0%)

Magenta (47%)

Yellow (100%)

Black (83%)



Cyan (83%)

Magenta (91%)

Yellow (100%)


Brightness & Saturation Gradients

These gradients show how the CIELCh color 10, 16.910, 63.388 changes by changing the brightness by 10 percent. The first figure shows a shift by +10% for each color and the second figure -10%.

Similar to the brightness gradients but the following saturation gradients show a change of the CIELCh color 10, 16.910, 63.388 by changing the saturation by 10% instead.

 10, 16.910, 63.388

 10, 16.910, 63.388

 100, 16.910,
63.388

 0, 16.910, 63.388

 30, 16.910, 63.388

 40, 16.910, 63.388

 50, 16.910, 63.388

 60, 16.910, 63.388

 70, 16.910, 63.388

 80, 16.910, 63.388

 90, 16.910, 63.388

■ 10, 16.910, 63.388

■ 10, 16.910, 63.388

■ 10, 16.907, 63.384

■ 11, 15.761, 65.413

■ 11, 14.634, 67.795

■ 12, 13.452, 70.373

■ 13, 11.926, 72.451

■ 14, 9.988, 73.900

■ 14, 7.861, 74.966

■ 15, 5.799, 76.016

■ 16, 3.802, 77.045

■ 17, 1.869, 78.035

Harmonies

Complementary

The Complementary color scheme is a pair of colors which are on the opposite of each other on the color wheel.



10, 16.910, 63.388



6, 17.914, 275.887

Rectangle

The Rectangle color scheme consists of four colors that form a rectangle on the color wheel.



10, 16.910, 63.388



10, 16.910, 113.388



10, 16.910, 243.388



10, 16.910, 293.388

Sweetspot

The Sweet Spot groups the original color and five complimentary colors.



10, 16.907, 63.384



21, 7.282, 75.825



5, 22.988, 356.425



8, 4.442, 74.528



64, 0.008, 296.813



10, 0.003, 296.813

Same Dimension

The Same Dimension uses a secret algorithm to generate beautiful new colors.



10, 16.907, 63.384



14, 23.467, 64.896



17, 24.814, 106.459



6, 0.799, 77.915



23, 35.697, 65.719



58, 73.213, 63.176

Inverse Universe

The Inverse Universe completely reimagines the original color for something new.



6, 17.914, 275.887



9, 22.732, 279.895



2, 27.324, 294.759



6, 0.816, 260.257



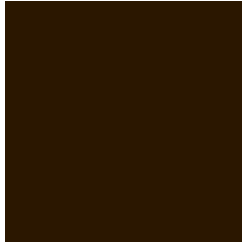
16, 31.809, 283.399



44, 67.857, 287.724

Previews

White Background



This preview shows how the CIELCh color 10, 16.910, 63.388 looks on a white background.

Color Contrast Check

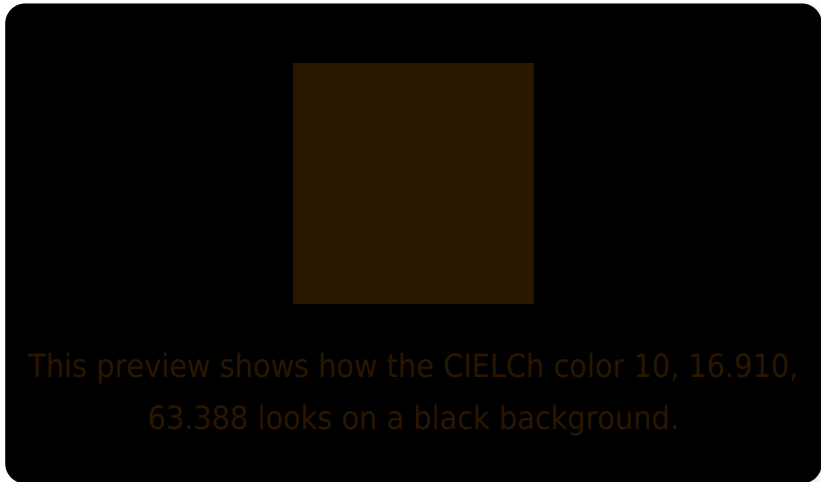
Large Text (above 18pt) WCAG AA ✓ Pass

Any Text WCAG AA ✓ Pass

Large Text (above 18pt) WCAG AAA ✓ Pass

Any Text WCAG AAA ✓ Pass

Black Background



Color Contrast Check

Large Text (above 18pt) WCAG AA × Fail

Any Text WCAG AA × Fail

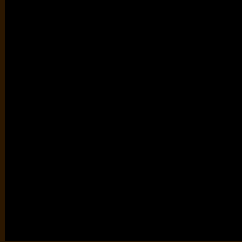
Large Text (above 18pt) WCAG AAA × Fail

Any Text WCAG AAA × Fail

If you want to check with other color combinations, try the [Color Contrast Checker](#).

CIELCh 10, 16.910, 63.388

Background



This preview shows how black text looks on a background with the CIELCh color 10, 16.910, 63.388.

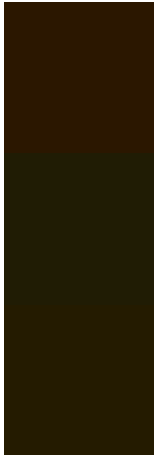


This preview shows how white text looks on a background with the CIELCh color 10, 16.910, 63.388.

Color Blindness Simulation

Color vision deficiency is a very complex topic, and I could not describe the different causes any better than Wikipedia does, so if you want to learn more, you should check out their [article about color blindness](#).

Dichromacy



Original Color

10, 16.910, 63.388

Protanopia

10, 13.627, 98.405

Deuteranopia

10, 15.330, 87.714



Tritanopia
10, 12.576, 17.206

Trichromacy



Original Color

10, 16.910, 63.388

Protanomaly

10, 13.783, 83.034

Deuteranomaly

10, 15.807, 78.654

Tritanomaly

10, 13.590, 41.013

Monochromacy



Original Color

10, 16.910, 63.388

Achromatopsia

9, 0.003, 296.813

Achromatomaly

9, 6.714, 73.342

CSS Examples

Text

The CSS property to change the color of the text to CIELCh 10, 16.910, 63.388 is called "color". The color property can be set on classes, ids or directly on the HTML element.

This example shows how text in the color `rgb(43, 23, 0)` looks like.

```
.text, #text, p{  
    color:rgb(43, 23, 0)  
}
```

If you want to add a text shadow in that color use the text-shadow property, you can generate a text shadow directly with our [CSS Text Shadow Generator](#).

Here you see how black text with a 4 pixel rgb(43, 23, 0) colored shadow looks like.

```
.shadow{ text-shadow: 4px 4px 2px rgb(43, 23, 0) }
```

Border

The CSS property to change the border of an element to CIELCh 10, 16.910, 63.388 is called "border". The border property can be set on classes, ids or directly on the HTML element.

This example shows the color as border, it can be applied via the CSS property "border" or "border-color".

```
.border, #border, table{ border:4px solid rgb(43, 23, 0) }
```

If only the border color should be changed use the property `border-color`.

```
.border{ border-color:rgb(43, 23, 0) }
```

If you want to add a box shadow in that color use:

Here you see how a box with a 4 pixel `rgb(43, 23, 0)` colored shadow looks like.

```
.boxshadow{ -moz-box-shadow:4px 4px 4px  
4px rgb(43, 23, 0); -webkit-box-shadow:4px  
4px 4px 4px rgb(43, 23, 0); box-shadow:4px  
4px 4px 4px rgb(43, 23, 0) }
```

Background

The CSS property to change the background color of an element to CIELCh 10, 16.910, 63.388 is called "background". The background property can be set on classes, ids or directly on the HTML element.

```
.background, #background, body{  
background: rgb(43, 23, 0) }
```

If only the background color should be changed can be used:

```
.background{ background-color: rgb(43, 23,  
0) }
```

This example shows the color as background, it is applied via the CSS property "background".

To optimize and compress your CSS code, you can use our [online CSS compressor and optimizer](#) based on csstidy. If you want to create a linear or radial gradient as background or border, check our [CSS Gradient Generator](#).

Hey! You found this booklet
interesting? Support Converting
Colors with the new Membership
Option!

The pro membership hides all ads, plus gives you
double the colors in the color bucket, and more
awesome pro features!

[Learn more, Memberships starting at \\$2.50/m!](#)

**Follow me
on Twitter!**

@ConvertingColor