

Converting Colors

CIELCh(12, 12.337, 38.406)

Have a look what the booklet for
CIELCh(12, 12.337, 38.406) contains.

CIELCh(12, 12.506, 38.848)	3
<i>Conversions</i>	4
<i>Details</i>	6
<i>Harmonies</i>	11
<i>Previews</i>	20
<i>Color Blindness Simulation</i>	23
<i>CSS Examples</i>	26

Color

CIELCh(12, 12.506, 38.848)

Conversions

Conversions Part 1

Format	Color
Hex	2F1A15
RGB	47, 26, 21
RGB Percent	18%, 10%, 8%
CMY	0.8152, 0.8976, 0.9172
CMYK	0.00, 0.45, 0.55, 0.82
HSL	12°, 38%, 13%
HSV	12°, 55%, 18%
XYZ	1.6872, 1.4064, 0.8980
YIQ	31.7090, 14.1210, 2.8970

Conversions

Conversions Part 2

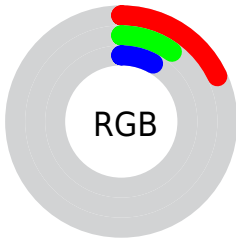
Format	Color
RYB	47, 27, 21
Decimal	3086869
CIELab	12.00, 9.74, 7.84
CIELCh	12, 12.506, 38.848
Yxy	1.4064, 0.4227, 0.3523
Android (android.graphics.Color)	4281276949 (0xFF2F1A15)
YUV	31.7090, -5.2795, 13.4102
Hunter-Lab	11.8591, 4.6414, 3.8115

Details

The CIELCh color **12, 12.506, 38.848** is a dark color, and the websafe version is hex **333333**. A complement of this color would be **16, 8.928, 221.199**, and the grayscale version is **12, 0.003, 296.813**.

A 20% lighter version of the original color is **32, 12.518, 38.586**, and **0, 0.000, 0.000** is the 20% darker color. If you saturate the color by 10%, you get **11, 14.930, 37.768**, and if you desaturate by 10%, it is **13, 9.911, 38.611**.

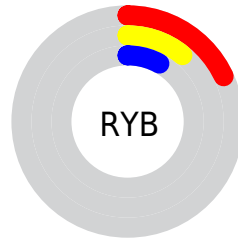
Distribution



Red (18%)

Green (10%)

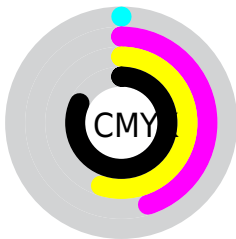
Blue (8%)



Red (18%)

Yellow (11%)

Blue (8%)

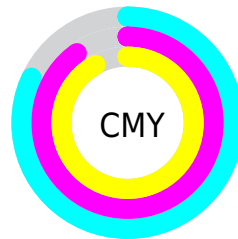


Cyan (0%)

Magenta (45%)

Yellow (55%)

Black (82%)



Cyan (82%)

Magenta (90%)

Yellow (92%)

Brightness & Saturation Gradients

These gradients show how the CIELCh color 12, 12.506, 38.848 changes by changing the brightness by 10 percent. The first figure shows a shift by +10% for each color and the second figure -10%.

Similar to the brightness gradients but the following saturation gradients show a change of the CIELCh color 12, 12.506, 38.848 by changing the saturation by 10% instead.

■ 12, 12.506, 38.848

■ 12, 12.506, 38.848

■ 100, 12.506,
38.848

■ 2, 12.506, 38.848

■ 32, 12.506, 38.848

■ 0, 12.506, 38.848

■ 42, 12.506, 38.848

■ 52, 12.506, 38.848

■ 62, 12.506, 38.848

■ 72, 12.506, 38.848

■ 82, 12.506, 38.848

■ 92, 12.506, 38.848

■ 12, 12.506, 38.848

■ 12, 12.506, 38.848

■ 11, 14.930, 37.768

■ 13, 9.911, 38.611

■ 10, 17.086, 35.567

■ 15, 7.457, 38.422

■ 9, 19.046, 33.088

■ 16, 5.157, 38.342

■ 8, 20.913, 31.537

■ 17, 3.005, 38.339

■ 7, 21.732, 31.229

■ 19, 0.992, 38.303

■ 20, 0.893, 218.885

■ 22, 2.661, 218.938

■ 23, 4.323, 219.145

■ 24, 5.889, 219.394

Harmonies

Complementary

The Complementary color scheme is a pair of colors which are on the opposite of each other on the color wheel.



12, 12.506, 38.848



16, 8.928, 221.199

Rectangle

The Rectangle color scheme consists of four colors that form a rectangle on the color wheel.



12, 12.506, 38.848



12, 12.506, 88.848



12, 12.506, 218.848



12, 12.506, 268.848

Sweetspot

The Sweet Spot groups the original color and five complimentary colors.



12, 12.505, 38.853



23, 4.231, 38.335



11, 19.043, 332.883



10, 2.761, 38.335



65, 0.008, 296.813



12, 0.003, 296.813

Same Dimension

The Same Dimension uses a secret algorithm to generate beautiful new colors.



12, 12.505, 38.853



15, 19.534, 39.670



16, 13.172, 86.515



7, 0.950, 37.657



17, 40.874, 40.563



47, 87.560, 43.038

Inverse Universe

The Inverse Universe completely reimagines the original color for something new.



16, 8.928, 221.199



20, 12.475, 222.785



11, 13.223, 280.339



7, 0.943, 219.514



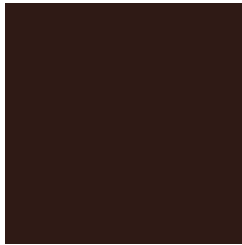
27, 19.870, 230.754



66, 38.416, 234.273

Previews

White Background



This preview shows how the CIELCh color 12, 12.506, 38.848 looks on a white background.

Color Contrast Check

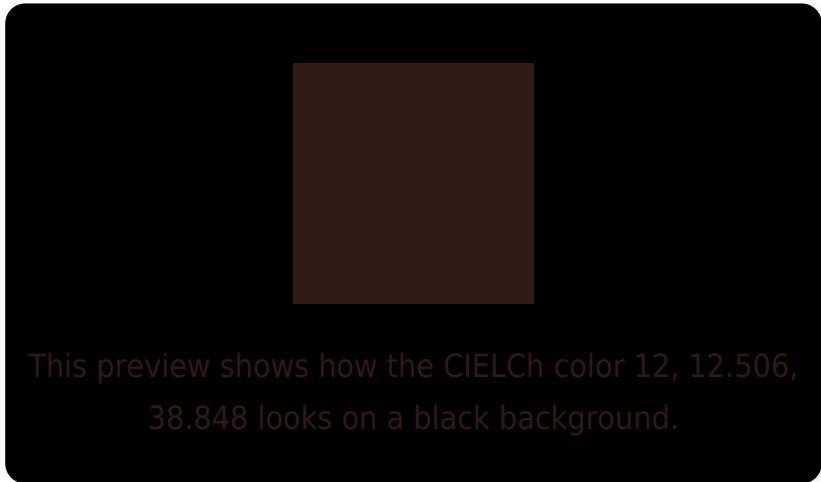
Large Text (above 18pt) WCAG AA ✓ Pass

Any Text WCAG AA ✓ Pass

Large Text (above 18pt) WCAG AAA ✓ Pass

Any Text WCAG AAA ✓ Pass

Black Background



Color Contrast Check

Large Text (above 18pt) WCAG AA × Fail

Any Text WCAG AA × Fail

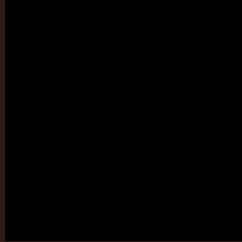
Large Text (above 18pt) WCAG AAA × Fail

Any Text WCAG AAA × Fail

If you want to check with other color combinations, try the [Color Contrast Checker](#).

CIELCh 12, 12.506, 38.848

Background



This preview shows how black text looks on a background with the CIELCh color 12, 12.506, 38.848.

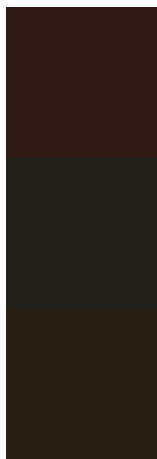


This preview shows how white text looks on a background with the CIELCh color 12, 12.506, 38.848.

Color Blindness Simulation

Color vision deficiency is a very complex topic, and I could not describe the different causes any better than Wikipedia does, so if you want to learn more, you should check out their [article about color blindness](#).

Dichromacy



Original Color

12, 12.506, 38.848

Protanopia

12, 5.846, 97.833

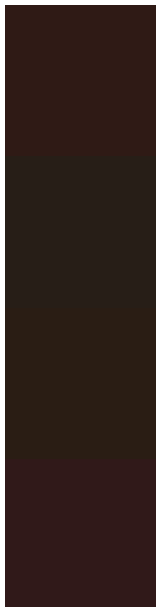
Deuteranopia

12, 9.096, 78.355



Tritanopia
12, 12.324, 16.722

Trichromacy



Original Color

12, 12.506, 38.848

Protanomaly

12, 7.132, 64.774

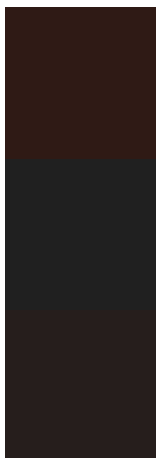
Deuteranomaly

12, 9.895, 60.556

Tritanomaly

12, 12.513, 23.236

Monochromacy



Original Color

12, 12.506, 38.848

Achromatopsia

12, 0.003, 296.813

Achromatomaly

12, 4.463, 39.164

CSS Examples

Text

The CSS property to change the color of the text to CIELCh 12, 12.506, 38.848 is called "color". The color property can be set on classes, ids or directly on the HTML element.

This example shows how text in the color `rgb(47, 26, 21)` looks like.

```
.text, #text, p{  
    color:rgb(47, 26, 21)  
}
```

If you want to add a text shadow in that color use the text-shadow property, you can generate a text shadow directly with our [CSS Text Shadow Generator](#).

Here you see how black text with a 4 pixel rgb(47, 26, 21) colored shadow looks like.

```
.shadow{ text-shadow: 4px 4px 2px rgb(47, 26, 21) }
```

Border

The CSS property to change the border of an element to CIELCh 12, 12.506, 38.848 is called "border". The border property can be set on classes, ids or directly on the HTML element.

This example shows the color as border, it can be applied via the CSS property "border" or "border-color".

```
.border, #border, table{ border:4px solid rgb(47, 26, 21) }
```

If only the border color should be changed use the property `border-color`.

```
.border{ border-color:rgb(47, 26, 21) }
```

If you want to add a box shadow in that color use:

Here you see how a box with a 4 pixel `rgb(47, 26, 21)` colored shadow looks like.

```
.boxshadow{ -moz-box-shadow:4px 4px 4px  
4px rgb(47, 26, 21); -webkit-box-  
shadow:4px 4px 4px 4px rgb(47, 26, 21);  
box-shadow:4px 4px 4px 4px rgb(47, 26, 21)  
}
```

Background

The CSS property to change the background color of an element to CIELCh 12, 12.506, 38.848 is called "background". The background property can be set on classes, ids or directly on the HTML element.

```
.background, #background, body{  
background: rgb(47, 26, 21) }
```

If only the background color should be changed can be used:

```
.background{ background-color: rgb(47, 26,  
21) }
```

This example shows the color as background, it is applied via the CSS property "background".

To optimize and compress your CSS code, you can use our [online CSS compressor and optimizer](#) based on csstidy. If you want to create a linear or radial gradient as background or border, check our [CSS Gradient Generator](#).

Hey! You found this booklet interesting? Support Converting Colors with the new Membership Option!

The pro membership hides all ads, plus gives you double the colors in the color bucket, and more awesome pro features!

[Learn more, Memberships starting at \\$2.50/m!](#)

**Follow me
on Twitter!**

@ConvertingColor