

Converting Colors

CIELCh(12, 21.792, 46.126)

Have a look what the booklet for
CIELCh(12, 21.792, 46.126) contains.

CIELCh(12, 21.792, 46.126)	3
<i>Conversions</i>	4
<i>Details</i>	6
<i>Harmonies</i>	11
<i>Previews</i>	20
<i>Color Blindness Simulation</i>	23
<i>CSS Examples</i>	26

Color

CIELCh(12, 21.792, 46.126)

Conversions

Conversions Part 1

Format	Color
Hex	371606
RGB	55, 22, 6
RGB Percent	22%, 9%, 2%
CMY	0.7839, 0.9133, 0.9758
CMYK	0.00, 0.60, 0.89, 0.78
HSL	20°, 80%, 12%
HSV	20°, 89%, 22%
XYZ	1.9040, 1.4064, 0.3482
YIQ	30.0430, 24.8040, 2.0200

Conversions

Conversions Part 2

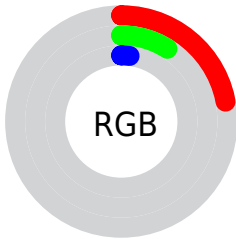
Format	Color
R_{YB}	55, 30, 6
Decimal	3610118
CIE Lab	12.00, 15.10, 15.71
CIE LCh	12, 21.792, 46.126
Yxy	1.4064, 0.5204, 0.3844
Android (android.graphics.Color)	4281800198 (0xFF371606)
YUV	30.0430, -11.8532, 21.8873
Hunter-Lab	11.8591, 7.9049, 6.5605

Details

The CIELCh color **12, 21.792, 46.126** is a dark color, and the websafe version is hex **330000**. A complement of this color would be **14, 14.591, 249.561**, and the grayscale version is **11, 0.003, 296.813**.

A 20% lighter version of the original color is **32, 22.038, 46.942**, and **0, 0.000, 0.000** is the 20% darker color. If you saturate the color by 10%, you get **11, 23.790, 44.199**, and if you desaturate by 10%, it is **13, 19.776, 48.714**.

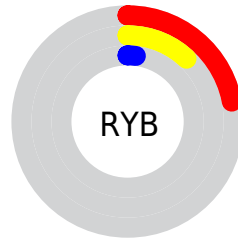
Distribution



Red (22%)

Green (9%)

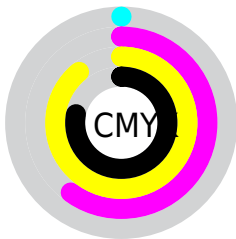
Blue (2%)



Red (22%)

Yellow (12%)

Blue (2%)

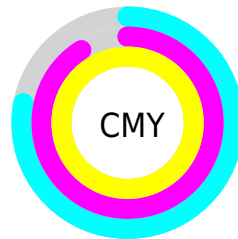


Cyan (0%)

Magenta (60%)

Yellow (89%)

Black (78%)



Cyan (78%)

Magenta (91%)

Yellow (98%)


Brightness & Saturation Gradients

These gradients show how the CIELCh color 12, 21.792, 46.126 changes by changing the brightness by 10 percent. The first figure shows a shift by +10% for each color and the second figure -10%.

Similar to the brightness gradients but the following saturation gradients show a change of the CIELCh color 12, 21.792, 46.126 by changing the saturation by 10% instead.

 12, 21.792, 46.126

 12, 21.792, 46.126

 100, 21.792,
46.126

 2, 21.792, 46.126

 32, 21.792, 46.126

 0, 21.792, 46.126

 42, 21.792, 46.126

 52, 21.792, 46.126

 62, 21.792, 46.126

 72, 21.792, 46.126

 82, 21.792, 46.126

 92, 21.792, 46.126

■ 12, 21.792, 46.126

■ 12, 21.792, 46.126

■ 11, 23.790, 44.199

■ 13, 19.776, 48.714

■ 11, 24.027, 44.013

■ 14, 17.427, 50.787

■ 15, 14.592, 51.564

■ 17, 11.733, 51.956

■ 18, 9.034, 52.417

■ 19, 6.495, 52.938

■ 21, 4.109, 53.500

■ 22, 1.865, 54.062

■ 23, 0.247, 235.621

Harmonies

Complementary

The Complementary color scheme is a pair of colors which are on the opposite of each other on the color wheel.



12, 21.792, 46.126



14, 14.591, 249.561

Rectangle

The Rectangle color scheme consists of four colors that form a rectangle on the color wheel.



12, 21.792, 46.126



12, 21.792, 96.126



12, 21.792, 226.126



12, 21.792, 276.126

Sweetspot

The Sweet Spot groups the original color and five complimentary colors.



12, 21.791, 46.130



26, 7.549, 52.965



10, 28.848, 341.874



11, 4.993, 52.937



67, 0.008, 296.813



14, 0.003, 296.813

Same Dimension

The Same Dimension uses a secret algorithm to generate beautiful new colors.



12, 21.791, 46.130



15, 31.829, 46.935



19, 24.834, 92.545



10, 1.189, 54.084



21, 40.862, 48.681



51, 83.554, 48.321

Inverse Universe

The Inverse Universe completely reimagines the original color for something new.



14, 14.591, 249.561



18, 19.341, 254.759



6, 29.742, 295.183



10, 1.149, 235.443



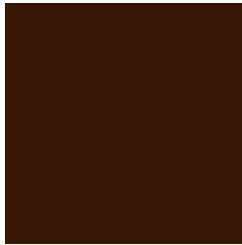
24, 23.358, 256.837



58, 45.900, 261.371

Previews

White Background



This preview shows how the CIELCh color 12, 21.792, 46.126 looks on a white background.

Color Contrast Check

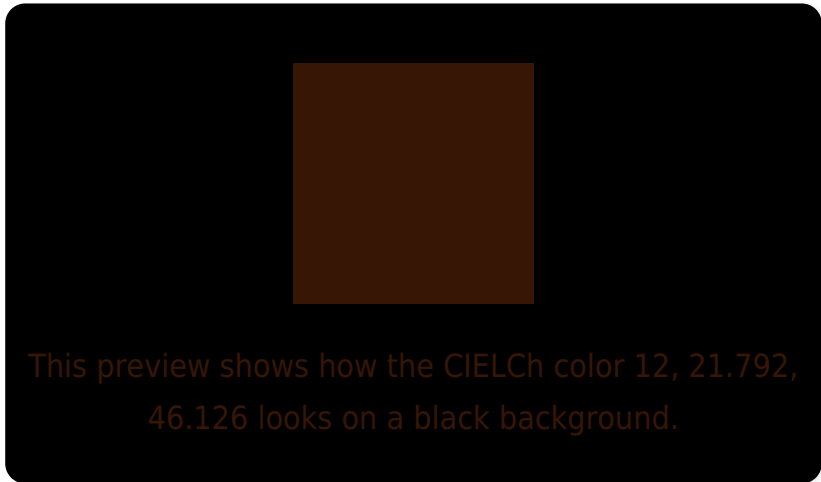
Large Text (above 18pt) WCAG AA ✓ Pass

Any Text WCAG AA ✓ Pass

Large Text (above 18pt) WCAG AAA ✓ Pass

Any Text WCAG AAA ✓ Pass

Black Background



Color Contrast Check

Large Text (above 18pt) WCAG AA × Fail

Any Text WCAG AA × Fail

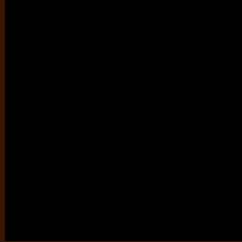
Large Text (above 18pt) WCAG AAA × Fail

Any Text WCAG AAA × Fail

If you want to check with other color combinations, try the [Color Contrast Checker](#).

CIELCh 12, 21.792, 46.126

Background



This preview shows how black text looks on a background with the CIELCh color 12, 21.792, 46.126.

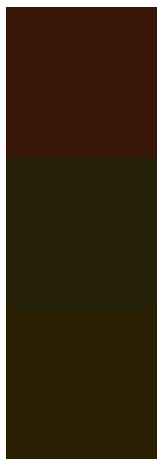


This preview shows how white text looks on a background with the CIELCh color 12, 21.792, 46.126.

Color Blindness Simulation

Color vision deficiency is a very complex topic, and I could not describe the different causes any better than Wikipedia does, so if you want to learn more, you should check out their [article about color blindness](#).

Dichromacy



Original Color

12, 21.792, 46.126

Protanopia

13, 15.070, 97.858

Deuteranopia

12, 18.266, 87.708



Tritanopia
12, 19.168, 23.806

Trichromacy



Original Color

12, 21.792, 46.126

Protanomaly

12, 15.585, 72.783

Deuteranomaly

12, 18.225, 71.053

Tritanomaly

12, 20.406, 33.854

Monochromacy



Original Color

12, 21.792, 46.126

Achromatopsia

11, 0.003, 296.813

Achromatomaly

11, 8.077, 52.921

CSS Examples

Text

The CSS property to change the color of the text to CIELCh 12, 21.792, 46.126 is called "color". The color property can be set on classes, ids or directly on the HTML element.

This example shows how text in the color `rgb(55, 22, 6)` looks like.

```
.text, #text, p{  
    color:rgb(55, 22, 6)  
}
```

If you want to add a text shadow in that color use the text-shadow property, you can generate a text shadow directly with our [CSS Text Shadow Generator](#).

Here you see how black text with a 4 pixel rgb(55, 22, 6) colored shadow looks like.

```
.shadow{ text-shadow: 4px 4px 2px rgb(55, 22, 6) }
```

Border

The CSS property to change the border of an element to CIELCh 12, 21.792, 46.126 is called "border". The border property can be set on classes, ids or directly on the HTML element.

This example shows the color as border, it can be applied via the CSS property "border" or "border-color".

```
.border, #border, table{ border:4px solid rgb(55, 22, 6) }
```

If only the border color should be changed use the property border-color.

```
.border{ border-color:rgb(55, 22, 6) }
```

If you want to add a box shadow in that color use:

Here you see how a box with a 4 pixel rgb(55, 22, 6) colored shadow looks like.

```
.boxshadow{ -moz-box-shadow:4px 4px 4px  
4px rgb(55, 22, 6); -webkit-box-shadow:4px  
4px 4px 4px rgb(55, 22, 6); box-shadow:4px  
4px 4px 4px rgb(55, 22, 6) }
```

Background

The CSS property to change the background color of an element to CIELCh 12, 21.792, 46.126 is called "background". The background property can be set on classes, ids or directly on the HTML element.

```
.background, #background, body{  
background: rgb(55, 22, 6) }
```

If only the background color should be changed can be used:

```
.background{ background-color: rgb(55, 22,  
6) }
```

This example shows the color as background, it is applied via the CSS property "background".

To optimize and compress your CSS code, you can use our [online CSS compressor and optimizer](#) based on csstidy. If you want to create a linear or radial gradient as background or border, check our [CSS Gradient Generator](#).

Hey! You found this booklet interesting? Support Converting Colors with the new Membership Option!

The pro membership hides all ads, plus gives you double the colors in the color bucket, and more awesome pro features!

[Learn more, Memberships starting at \\$2.50/m!](#)

**Follow me
on Twitter!**

@ConvertingColor