

Converting Colors

CIELCh(12, 22.356, 38.145)

Have a look what the booklet for
CIELCh(12, 22.356, 38.145) contains.

CIELCh(12, 22.327, 37.783)	3
<i>Conversions</i>	4
<i>Details</i>	6
<i>Harmonies</i>	11
<i>Previews</i>	20
<i>Color Blindness Simulation</i>	23
<i>CSS Examples</i>	26

Color

CIELCh(12, 22.327, 37.783)

Conversions

Conversions Part 1

Format	Color
Hex	39140B
RGB	57, 20, 11
RGB Percent	22%, 8%, 4%
CMY	0.7758, 0.9209, 0.9558
CMYK	0.00, 0.65, 0.80, 0.78
HSL	12°, 67%, 13%
HSV	12°, 80%, 22%
XYZ	2.0129, 1.4064, 0.4901
YIQ	30.0370, 24.9410, 5.0450

Conversions

Conversions Part 2

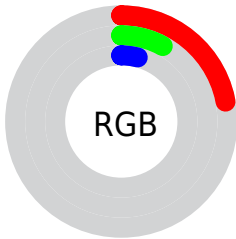
Format	Color
R_{YB}	57, 22, 11
Decimal	3740683
CIE _{Lab}	12.00, 17.65, 13.68
CIE _{LCh}	12, 22.327, 37.783
Yxy	1.4064, 0.5149, 0.3597
Android (android.graphics.Color)	4281930763 (0xFF39140B)
YUV	30.0370, -9.3852, 23.6466
Hunter-Lab	11.8591, 9.5449, 5.8509

Details

The CIELCh color **12, 22.327, 37.783** is a dark color, and the websafe version is hex **330000**. A complement of this color would be **18, 13.317, 225.182**, and the grayscale version is **11, 0.003, 296.813**.

A 20% lighter version of the original color is **32, 22.424, 38.691**, and **0, 0.000, 0.000** is the 20% darker color. If you saturate the color by 10%, you get **11, 24.679, 35.957**, and if you desaturate by 10%, it is **13, 19.638, 39.320**.

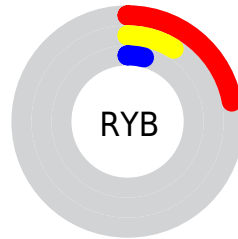
Distribution



Red (22%)

Green (8%)

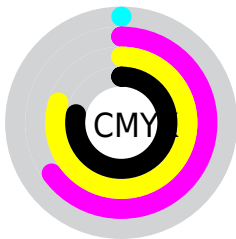
Blue (4%)



Red (22%)

Yellow (9%)

Blue (4%)

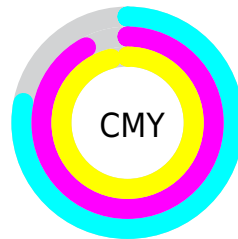


Cyan (0%)

Magenta (65%)

Yellow (80%)

Black (78%)



Cyan (78%)

Magenta (92%)

Yellow (96%)


Brightness & Saturation Gradients

These gradients show how the CIELCh color 12, 22.327, 37.783 changes by changing the brightness by 10 percent. The first figure shows a shift by +10% for each color and the second figure -10%.

Similar to the brightness gradients but the following saturation gradients show a change of the CIELCh color 12, 22.327, 37.783 by changing the saturation by 10% instead.

 12, 22.327, 37.783

 12, 22.327, 37.783

 100, 22.327,
37.783

 2, 22.327, 37.783

 32, 22.327, 37.783

 0, 22.327, 37.783

 42, 22.327, 37.783

 52, 22.327, 37.783

 62, 22.327, 37.783

 72, 22.327, 37.783

 82, 22.327, 37.783

 92, 22.327, 37.783

■ 12, 22.327, 37.783

■ 12, 22.327, 37.783

■ 11, 24.679, 35.957

■ 13, 19.638, 39.320

■ 10, 26.834, 35.035

■ 15, 16.487, 39.431

■ 16, 13.290, 38.989

■ 18, 10.278, 38.707

■ 19, 7.455, 38.562

■ 21, 4.819, 38.522

■ 22, 2.360, 38.541

■ 24, 0.065, 35.301

■ 26, 2.080, 219.081

Harmonies

Complementary

The Complementary color scheme is a pair of colors which are on the opposite of each other on the color wheel.



12, 22.327, 37.783



18, 13.317, 225.182

Rectangle

The Rectangle color scheme consists of four colors that form a rectangle on the color wheel.



12, 22.327, 37.783



12, 22.327, 87.783



12, 22.327, 217.783



12, 22.327, 267.783

Sweetspot

The Sweet Spot groups the original color and five complimentary colors.



12, 22.326, 37.786



27, 7.187, 38.530



12, 30.230, 334.556



12, 5.008, 38.535



68, 0.008, 296.813



15, 0.003, 296.813

Same Dimension

The Same Dimension uses a secret algorithm to generate beautiful new colors.



12, 22.326, 37.786



15, 33.822, 39.016



18, 21.984, 82.947



9, 1.240, 38.540



19, 43.127, 41.173



48, 89.100, 43.055

Inverse Universe

The Inverse Universe completely reimagines the original color for something new.



18, 13.317, 225.182



23, 17.475, 229.370



10, 23.245, 287.009



10, 1.187, 219.073



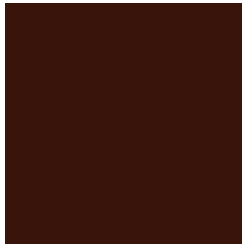
29, 20.684, 231.416



67, 39.136, 234.722

Previews

White Background



This preview shows how the CIELCh color 12, 22.327, 37.783 looks on a white background.

Color Contrast Check

Large Text (above 18pt) WCAG AA ✓ Pass

Any Text WCAG AA ✓ Pass

Large Text (above 18pt) WCAG AAA ✓ Pass

Any Text WCAG AAA ✓ Pass

Black Background



This preview shows how the CIE LCh color 12, 22.327, 37.783 looks on a black background.

Color Contrast Check

Large Text (above 18pt) WCAG AA × Fail

Any Text WCAG AA × Fail

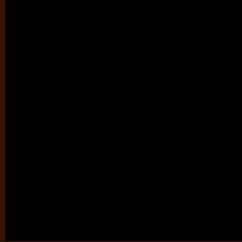
Large Text (above 18pt) WCAG AAA × Fail

Any Text WCAG AAA × Fail

If you want to check with other color combinations, try the [Color Contrast Checker](#).

CIELCh 12, 22.327, 37.783

Background



This preview shows how black text looks on a background with the CIELCh color 12, 22.327, 37.783.

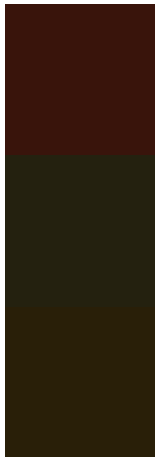


This preview shows how white text looks on a background with the CIELCh color 12, 22.327, 37.783.

Color Blindness Simulation

Color vision deficiency is a very complex topic, and I could not describe the different causes any better than Wikipedia does, so if you want to learn more, you should check out their [article about color blindness](#).

Dichromacy



Original Color

12, 22.327, 37.783

Protanopia

13, 12.285, 98.991

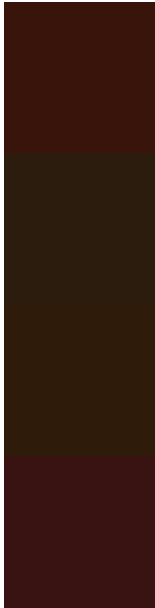
Deuteranopia

12, 15.220, 84.327



Tritanopia
12, 20.893, 24.627

Trichromacy



Original Color

12, 22.327, 37.783

Protanomaly

12, 13.320, 63.733

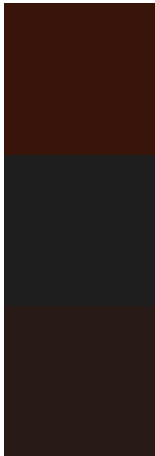
Deuteranomaly

12, 16.310, 61.550

Tritanomaly

12, 21.447, 29.251

Monochromacy



Original Color

12, 22.327, 37.783

Achromatopsia

11, 0.003, 296.813

Achromatomaly

11, 8.070, 37.001

CSS Examples

Text

The CSS property to change the color of the text to CIELCh 12, 22.327, 37.783 is called "color". The color property can be set on classes, ids or directly on the HTML element.

This example shows how text in the color `rgb(57, 20, 11)` looks like.

```
.text, #text, p{  
    color:rgb(57, 20, 11)  
}
```

If you want to add a text shadow in that color use the text-shadow property, you can generate a text shadow directly with our [CSS Text Shadow Generator](#).

Here you see how black text with a 4 pixel rgb(57, 20, 11) colored shadow looks like.

```
.shadow{ text-shadow: 4px 4px 2px rgb(57, 20, 11) }
```

Border

The CSS property to change the border of an element to CIELCh 12, 22.327, 37.783 is called "border". The border property can be set on classes, ids or directly on the HTML element.

This example shows the color as border, it can be applied via the CSS property "border" or "border-color".

```
.border, #border, table{ border:4px solid rgb(57, 20, 11) }
```

If only the border color should be changed use the property `border-color`.

```
.border{ border-color:rgb(57, 20, 11) }
```

If you want to add a box shadow in that color use:

Here you see how a box with a 4 pixel `rgb(57, 20, 11)` colored shadow looks like.

```
.boxshadow{ -moz-box-shadow:4px 4px 4px  
4px rgb(57, 20, 11); -webkit-box-  
shadow:4px 4px 4px 4px rgb(57, 20, 11);  
box-shadow:4px 4px 4px 4px rgb(57, 20, 11)  
}
```

Background

The CSS property to change the background color of an element to CIELCh 12, 22.327, 37.783 is called "background". The background property can be set on classes, ids or directly on the HTML element.

```
.background, #background, body{  
background: rgb(57, 20, 11) }
```

If only the background color should be changed can be used:

```
.background{ background-color: rgb(57, 20,  
11) }
```

This example shows the color as background, it is applied via the CSS property "background".

To optimize and compress your CSS code, you can use our [online CSS compressor and optimizer](#) based on csstidy. If you want to create a linear or radial gradient as background or border, check our [CSS Gradient Generator](#).

Hey! You found this booklet
interesting? Support Converting
Colors with the new Membership
Option!

The pro membership hides all ads, plus gives you
double the colors in the color bucket, and more
awesome pro features!

[Learn more, Memberships starting at \\$2.50/m!](#)

**Follow me
on Twitter!**

@ConvertingColor