

Converting Colors

CIELCh(13, 12.108, 70.182)

Have a look what the booklet for
CIELCh(13, 12.108, 70.182) contains.

CIELCh(13, 11.902, 69.146)	3
<i>Conversions</i>	4
<i>Details</i>	6
<i>Harmonies</i>	11
<i>Previews</i>	20
<i>Color Blindness Simulation</i>	23
<i>CSS Examples</i>	26

Color

CIELCh(13, 11.902, 69.146)

Conversions

Conversions Part 1

Format	Color
Hex	2C1F12
RGB	44, 31, 18
RGB Percent	17%, 12%, 7%
CMY	0.8273, 0.8783, 0.9292
CMYK	0.00, 0.30, 0.59, 0.83
HSL	30°, 42%, 12%
HSV	30°, 59%, 17%
XYZ	1.6413, 1.5625, 0.7894
YIQ	33.4050, 11.9210, -1.2870

Conversions

Conversions Part 2

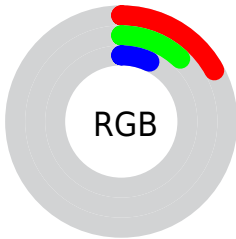
Format	Color
R_YB	44, 44, 18
Decimal	2891538
CIE Lab	13.00, 4.24, 11.12
CIE LCh	13, 11.902, 69.146
Yxy	1.5625, 0.4110, 0.3913
Android (android.graphics.Color)	4281081618 (0xFF2C1F12)
YUV	33.4050, -7.5947, 9.2918
Hunter-Lab	12.5000, 1.5628, 5.0056

Details

The CIELCh color **13, 11.902, 69.146** is a dark color, and the websafe version is hex **333333**. A complement of this color would be **11, 10.500, 264.278**, and the grayscale version is **13, 0.003, 296.813**.

A 20% lighter version of the original color is **33, 12.214, 69.820**, and **0, 0.000, 0.000** is the 20% darker color. If you saturate the color by 10%, you get **12, 13.560, 67.070**, and if you desaturate by 10%, it is **14, 9.833, 70.465**.

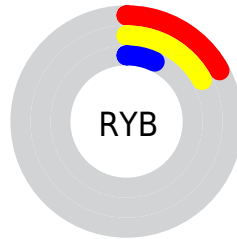
Distribution



Red (17%)

Green (12%)

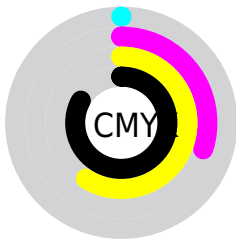
Blue (7%)



Red (17%)

Yellow (17%)

Blue (7%)

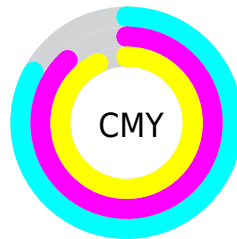


Cyan (0%)

Magenta (30%)

Yellow (59%)

Black (83%)



Cyan (83%)

Magenta (88%)

Yellow (93%)


Brightness & Saturation Gradients

These gradients show how the CIELCh color 13, 11.902, 69.146 changes by changing the brightness by 10 percent. The first figure shows a shift by +10% for each color and the second figure -10%.

Similar to the brightness gradients but the following saturation gradients show a change of the CIELCh color 13, 11.902, 69.146 by changing the saturation by 10% instead.

 13, 11.902, 69.146

 13, 11.902, 69.146

 100, 11.902,
69.146

 3, 11.902, 69.146

 33, 11.902, 69.146

 0, 11.902, 69.146

 43, 11.902, 69.146

 53, 11.902, 69.146

 63, 11.902, 69.146

 73, 11.902, 69.146

 83, 11.902, 69.146

 93, 11.902, 69.146

■ 13, 11.902, 69.146

■ 13, 11.902, 69.146

■ 12, 13.560, 67.070

■ 14, 9.833, 70.465

■ 11, 14.852, 64.368

■ 15, 7.679, 71.486

■ 11, 16.052, 61.775

■ 15, 5.602, 72.497

■ 10, 17.276, 59.595

■ 16, 3.602, 73.493

■ 10, 17.397, 59.401

■ 17, 1.676, 74.448

■ 18, 0.181, 256.221

■ 19, 1.975, 256.532

■ 20, 3.710, 257.438

■ 21, 5.393, 258.338

Harmonies

Complementary

The Complementary color scheme is a pair of colors which are on the opposite of each other on the color wheel.



13, 11.902, 69.146



11, 10.500, 264.278

Rectangle

The Rectangle color scheme consists of four colors that form a rectangle on the color wheel.



13, 11.902, 69.146



13, 11.902, 119.146



13, 11.902, 249.146



13, 11.902, 299.146

Sweetspot

The Sweet Spot groups the original color and five complimentary colors.



13, 11.902, 69.151



22, 4.181, 73.497



10, 15.847, 347.679



9, 2.808, 73.317



64, 0.008, 296.813



10, 0.003, 296.813

Same Dimension

The Same Dimension uses a secret algorithm to generate beautiful new colors.



13, 11.902, 69.151



16, 18.110, 67.570



17, 17.123, 104.894



7, 0.966, 74.100



23, 36.799, 62.540



57, 74.888, 60.184

Inverse Universe

The Inverse Universe completely reimagines the original color for something new.



11, 10.500, 264.278



14, 15.318, 268.163



7, 19.243, 295.885



7, 0.985, 256.696



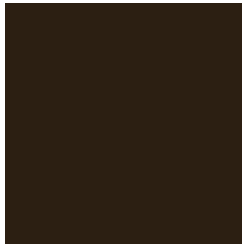
18, 30.533, 280.186



46, 63.928, 284.539

Previews

White Background



This preview shows how the CIELCh color 13, 11.902, 69.146 looks on a white background.

Color Contrast Check

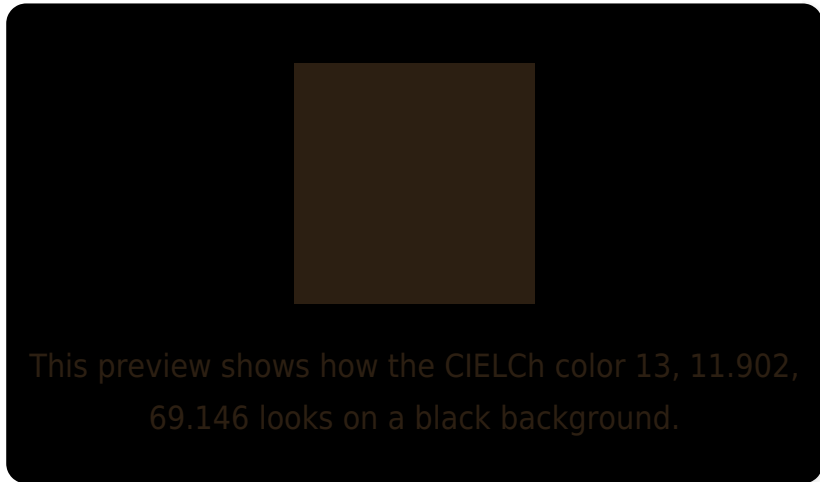
Large Text (above 18pt) WCAG AA ✓ Pass

Any Text WCAG AA ✓ Pass

Large Text (above 18pt) WCAG AAA ✓ Pass

Any Text WCAG AAA ✓ Pass

Black Background



Color Contrast Check

Large Text (above 18pt) WCAG AA × Fail

Any Text WCAG AA × Fail

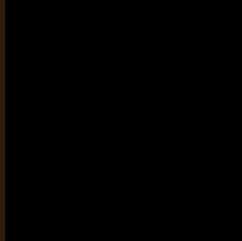
Large Text (above 18pt) WCAG AAA × Fail

Any Text WCAG AAA × Fail

If you want to check with other color combinations, try the [Color Contrast Checker](#).

CIELCh 13, 11.902, 69.146

Background



This preview shows how black text looks on a background with the CIELCh color 13, 11.902, 69.146.



This preview shows how white text looks on a background with the CIELCh color 13, 11.902, 69.146.

Color Blindness Simulation

Color vision deficiency is a very complex topic, and I could not describe the different causes any better than Wikipedia does, so if you want to learn more, you should check out their [article about color blindness](#).

Dichromacy



Original Color

13, 11.902, 69.146

Protanopia

13, 10.661, 98.099

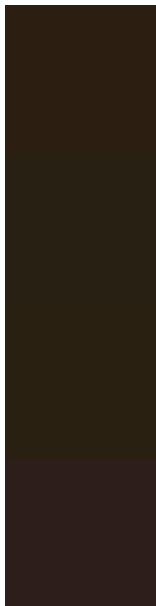
Deuteranopia

13, 11.127, 80.115



Tritanopia
13, 8.484, 7.378

Trichromacy



Original Color

13, 11.902, 69.146

Protanomaly

13, 10.660, 85.668

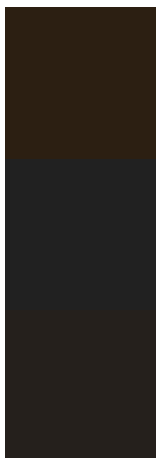
Deuteranomaly

13, 11.423, 77.612

Tritanomaly

13, 8.413, 36.033

Monochromacy



Original Color

13, 11.902, 69.146

Achromatopsia

13, 0.003, 296.813

Achromatomaly

13, 3.898, 67.017

CSS Examples

Text

The CSS property to change the color of the text to CIELCh 13, 11.902, 69.146 is called "color". The color property can be set on classes, ids or directly on the HTML element.

This example shows how text in the color `rgb(44, 31, 18)` looks like.

```
.text, #text, p{  
    color:rgb(44, 31, 18)  
}
```

If you want to add a text shadow in that color use the text-shadow property, you can generate a text shadow directly with our [CSS Text Shadow Generator](#).

Here you see how black text with a 4 pixel rgb(44, 31, 18) colored shadow looks like.

```
.shadow{ text-shadow: 4px 4px 2px rgb(44, 31, 18) }
```

Border

The CSS property to change the border of an element to CIELCh 13, 11.902, 69.146 is called "border". The border property can be set on classes, ids or directly on the HTML element.

This example shows the color as border, it can be applied via the CSS property "border" or "border-color".

```
.border, #border, table{ border:4px solid rgb(44, 31, 18) }
```

If only the border color should be changed use the property `border-color`.

```
.border{ border-color:rgb(44, 31, 18) }
```

If you want to add a box shadow in that color use:

Here you see how a box with a 4 pixel `rgb(44, 31, 18)` colored shadow looks like.

```
.boxshadow{ -moz-box-shadow:4px 4px 4px  
4px rgb(44, 31, 18); -webkit-box-  
shadow:4px 4px 4px 4px rgb(44, 31, 18);  
box-shadow:4px 4px 4px 4px rgb(44, 31, 18)  
}
```

Background

The CSS property to change the background color of an element to CIELCh 13, 11.902, 69.146 is called "background". The background property can be set on classes, ids or directly on the HTML element.

```
.background, #background, body{  
background: rgb(44, 31, 18) }
```

If only the background color should be changed can be used:

```
.background{ background-color: rgb(44, 31,  
18) }
```

This example shows the color as background, it is applied via the CSS property "background".

To optimize and compress your CSS code, you can use our [online CSS compressor and optimizer](#) based on csstidy. If you want to create a linear or radial gradient as background or border, check our [CSS Gradient Generator](#).

Hey! You found this booklet interesting? Support Converting Colors with the new Membership Option!

The pro membership hides all ads, plus gives you double the colors in the color bucket, and more awesome pro features!

[Learn more, Memberships starting at \\$2.50/m!](#)

**Follow me
on Twitter!**

@ConvertingColor