

Converting Colors

CIELCh(13, 15.726, 39.465)

Have a look what the booklet for
CIELCh(13, 15.726, 39.465) contains.

CIELCh(13, 15.823, 40.884)	3
<i>Conversions</i>	4
<i>Details</i>	6
<i>Harmonies</i>	11
<i>Previews</i>	20
<i>Color Blindness Simulation</i>	23
<i>CSS Examples</i>	26

Color

CIELCh(13, 15.823, 40.884)

Conversions

Conversions Part 1	
Format	Color
Hex	351B14
RGB	53, 27, 20
RGB Percent	21%, 11%, 8%
CMY	0.7937, 0.8955, 0.9230
CMYK	0.00, 0.49, 0.63, 0.79
HSL	13°, 46%, 14%
HSV	13°, 63%, 21%
XYZ	1.9536, 1.5625, 0.8430
YIQ	33.9760, 17.7430, 3.3350

Conversions

Conversions Part 2

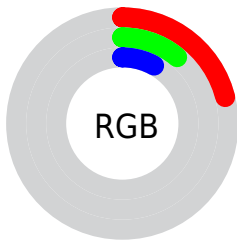
Format	Color
RYB	53, 29, 20
Decimal	3480340
CIELab	13.00, 11.96, 10.36
CIELCh	13, 15.823, 40.884
Yxy	1.5625, 0.4482, 0.3584
Android (android.graphics.Color)	4281670420 (0xFF351B14)
YUV	33.9760, -6.8902, 16.6840
Hunter-Lab	12.5000, 6.0224, 4.7517

Details

The CIELCh color **13, 15.823, 40.884** is a dark color, and the websafe version is hex **330000**. A complement of this color would be **17, 10.645, 225.249**, and the grayscale version is **13, 0.003, 296.813**.

A 20% lighter version of the original color is **33, 16.047, 41.786**, and **0, 0.000, 0.000** is the 20% darker color. If you saturate the color by 10%, you get **12, 18.435, 39.598**, and if you desaturate by 10%, it is **14, 12.902, 40.767**.

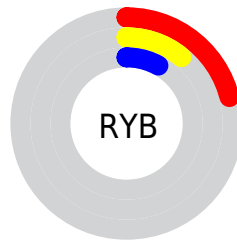
Distribution



Red (21%)

Green (11%)

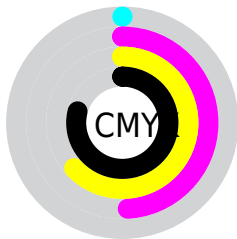
Blue (8%)



Red (21%)

Yellow (11%)

Blue (8%)

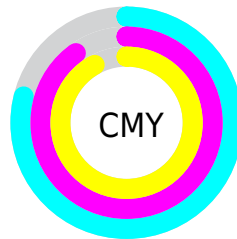


Cyan (0%)

Magenta (49%)

Yellow (63%)

Black (79%)



Cyan (79%)

Magenta (90%)

Yellow (92%)


Brightness & Saturation Gradients

These gradients show how the CIELCh color 13, 15.823, 40.884 changes by changing the brightness by 10 percent. The first figure shows a shift by +10% for each color and the second figure -10%.

Similar to the brightness gradients but the following saturation gradients show a change of the CIELCh color 13, 15.823, 40.884 by changing the saturation by 10% instead.

 13, 15.823, 40.884

 13, 15.823, 40.884

 100, 15.823,
40.884

 3, 15.823, 40.884

 33, 15.823, 40.884

 0, 15.823, 40.884

 43, 15.823, 40.884

 53, 15.823, 40.884

 63, 15.823, 40.884

 73, 15.823, 40.884

 83, 15.823, 40.884

 93, 15.823, 40.884

■ 13, 15.823, 40.884

■ 13, 15.823, 40.884

■ 12, 18.435, 39.598

■ 14, 12.902, 40.767

■ 11, 20.689, 37.338

■ 16, 10.097, 40.576

■ 10, 22.790, 35.479

■ 17, 7.466, 40.510

■ 9, 24.265, 34.676

■ 19, 5.004, 40.542

■ 20, 2.703, 40.638

■ 22, 0.553, 40.533

■ 23, 1.459, 221.313

■ 25, 3.345, 221.521

■ 26, 5.119, 221.819

Harmonies

Complementary

The Complementary color scheme is a pair of colors which are on the opposite of each other on the color wheel.



13, 15.823, 40.884



17, 10.645, 225.249

Rectangle

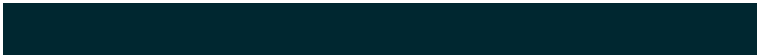
The Rectangle color scheme consists of four colors that form a rectangle on the color wheel.



13, 15.823, 40.884



13, 15.823, 90.884



13, 15.823, 220.884



13, 15.823, 270.884

Sweetspot

The Sweet Spot groups the original color and five complimentary colors.



13, 15.822, 40.888



26, 5.201, 40.564



12, 23.097, 334.065



12, 3.628, 40.556



67, 0.008, 296.813



14, 0.003, 296.813

Same Dimension

The Same Dimension uses a secret algorithm to generate beautiful new colors.



13, 15.822, 40.888



16, 24.896, 41.707



18, 16.641, 86.802



8, 1.126, 40.528



18, 41.676, 41.829



48, 87.609, 43.644

Inverse Universe

The Inverse Universe completely reimagines the original color for something new.



17, 10.645, 225.249



22, 14.725, 227.848



11, 16.993, 283.397



9, 1.083, 221.329



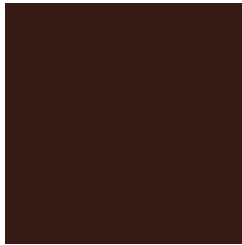
27, 20.405, 235.105



65, 39.211, 238.839

Previews

White Background



This preview shows how the CIE LCh color 13, 15.823, 40.884 looks on a white background.

Color Contrast Check

Large Text (above 18pt) WCAG AA ✓ Pass

Any Text WCAG AA ✓ Pass

Large Text (above 18pt) WCAG AAA ✓ Pass

Any Text WCAG AAA ✓ Pass

Black Background



This preview shows how the CIELCh color 13, 15.823, 40.884 looks on a black background.

Color Contrast Check

Large Text (above 18pt) WCAG AA × Fail

Any Text WCAG AA × Fail

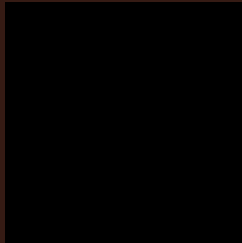
Large Text (above 18pt) WCAG AAA × Fail

Any Text WCAG AAA × Fail

If you want to check with other color combinations, try the [Color Contrast Checker](#).

CIELCh 13, 15.823, 40.884

Background



This preview shows how black text looks on a background with the CIELCh color 13, 15.823, 40.884.



This preview shows how white text looks on a background with the CIELCh color 13, 15.823, 40.884.

Color Blindness Simulation

Color vision deficiency is a very complex topic, and I could not describe the different causes any better than Wikipedia does, so if you want to learn more, you should check out their [article about color blindness](#).

Dichromacy



Original Color

13, 15.823, 40.884

Protanopia

13, 8.678, 96.735

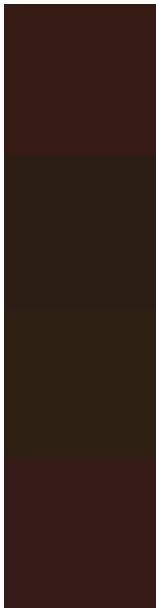
Deuteranopia

13, 11.732, 81.448



Tritanopia
13, 14.491, 21.078

Trichromacy



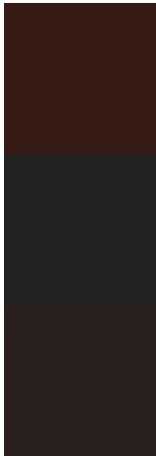
Original Color
13, 15.823, 40.884

Protanomaly
13, 9.948, 65.573

Deuteranomaly
13, 12.223, 63.603

Tritanomaly
13, 15.006, 29.045

Monochromacy



Original Color
13, 15.823, 40.884

Achromatopsia
13, 0.003, 296.813

Achromatomaly
13, 5.471, 35.762

CSS Examples

Text

The CSS property to change the color of the text to CIELCh 13, 15.823, 40.884 is called "color". The color property can be set on classes, ids or directly on the HTML element.

This example shows how text in the color `rgb(53, 27, 20)` looks like.

```
.text, #text, p{  
    color:rgb(53, 27, 20)  
}
```

If you want to add a text shadow in that color use the text-shadow property, you can generate a text shadow directly with our [CSS Text Shadow Generator](#).

Here you see how black text with a 4 pixel rgb(53, 27, 20) colored shadow looks like.

```
.shadow{ text-shadow: 4px 4px 2px rgb(53, 27, 20) }
```

Border

The CSS property to change the border of an element to CIELCh 13, 15.823, 40.884 is called "border". The border property can be set on classes, ids or directly on the HTML element.

This example shows the color as border, it can be applied via the CSS property "border" or "border-color".

```
.border, #border, table{ border:4px solid rgb(53, 27, 20) }
```

If only the border color should be changed use the property border-color.

```
.border{ border-color:rgb(53, 27, 20) }
```

If you want to add a box shadow in that color use:

Here you see how a box with a 4 pixel rgb(53, 27, 20) colored shadow looks like.

```
.boxshadow{ -moz-box-shadow:4px 4px 4px  
4px rgb(53, 27, 20); -webkit-box-  
shadow:4px 4px 4px 4px rgb(53, 27, 20);  
box-shadow:4px 4px 4px 4px rgb(53, 27, 20)  
}
```

Background

The CSS property to change the background color of an element to CIELCh 13, 15.823, 40.884 is called "background". The background property can be set on classes, ids or directly on the HTML element.

```
.background, #background, body{  
background: rgb(53, 27, 20) }
```

If only the background color should be changed can be used:

```
.background{ background-color: rgb(53, 27,  
20) }
```

This example shows the color as background, it is applied via the CSS property "background".

To optimize and compress your CSS code, you can use our [online CSS compressor and optimizer](#) based on csstidy. If you want to create a linear or radial gradient as background or border, check our [CSS Gradient Generator](#).

Hey! You found this booklet
interesting? Support Converting
Colors with the new Membership
Option!

The pro membership hides all ads, plus gives you
double the colors in the color bucket, and more
awesome pro features!

[Learn more, Memberships starting at \\$2.50/m!](#)

**Follow me
on Twitter!**

@ConvertingColor