

# Converting Colors

CIELCh(13, 17.842, 45.796)

Have a look what the booklet for  
CIELCh(13, 17.842, 45.796) contains.

<b>CIELCh(13, 17.888, 44.635)</b> .....	3
<i><b>Conversions</b></i> .....	4
<i><b>Details</b></i> .....	6
<i><b>Harmonies</b></i> .....	11
<i><b>Previews</b></i> .....	20
<i><b>Color Blindness Simulation</b></i> .....	23
<i><b>CSS Examples</b></i> .....	26

# Color

**CIELCh(13, 17.888, 44.635)**

# Conversions

## Conversions Part 1

Format	Color
Hex	361A10
RGB	54, 26, 16
RGB Percent	21%, 10%, 6%
CMY	0.7881, 0.8979, 0.9371
CMYK	0.00, 0.52, 0.70, 0.79
HSL	16°, 54%, 14%
HSV	16°, 70%, 21%
XYZ	1.9866, 1.5625, 0.6884
YIQ	33.2320, 19.8980, 2.8260

# Conversions

## Conversions Part 2

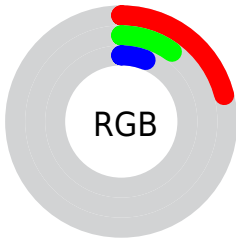
Format	Color
<b>RYB</b>	54, 30, 16
Decimal	3545616
CIELab	13.00, 12.73, 12.57
CIELCh	13, 17.888, 44.635
Yxy	1.5625, 0.4688, 0.3687
Android (android.graphics.Color)	4281735696 (0xFF361A10)
YUV	33.2320, -8.4954, 18.2135
Hunter-Lab	12.5000, 6.4933, 5.4850

# Details

The CIELCh color **13, 17.888, 44.635** is a dark color, and the websafe version is hex **330000**. A complement of this color would be **16, 11.791, 234.490**, and the grayscale version is **13, 0.003, 296.813**.

A 20% lighter version of the original color is **33, 17.979, 45.933**, and **0, 0.000, 0.000** is the 20% darker color. If you saturate the color by 10%, you get **12, 20.214, 42.476**, and if you desaturate by 10%, it is **14, 15.128, 45.546**.

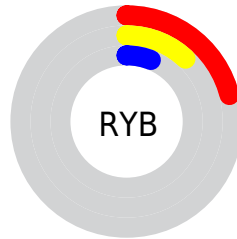
# Distribution



Red (21%)

Green (10%)

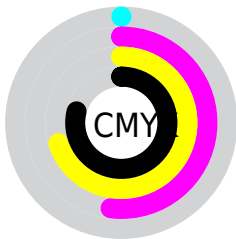
Blue (6%)



Red (21%)

Yellow (12%)

Blue (6%)

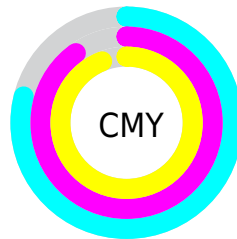


Cyan (0%)

Magenta (52%)

Yellow (70%)

Black (79%)



Cyan (79%)

Magenta (90%)

Yellow (94%)

# Brightness & Saturation Gradients


These gradients show how the CIELCh color 13, 17.888, 44.635 changes by changing the brightness by 10 percent. The first figure shows a shift by +10% for each color and the second figure -10%.

Similar to the brightness gradients but the following saturation gradients show a change of the CIELCh color 13, 17.888, 44.635 by changing the saturation by 10% instead.



 13, 17.888, 44.635

 13, 17.888, 44.635

 100, 17.888,  
44.635

 3, 17.888, 44.635

 33, 17.888, 44.635

 0, 17.888, 44.635

 43, 17.888, 44.635

 53, 17.888, 44.635

 63, 17.888, 44.635

 73, 17.888, 44.635

 83, 17.888, 44.635

 93, 17.888, 44.635

■ 13, 17.888, 44.635

■ 13, 17.888, 44.635

■ 12, 20.214, 42.476

■ 14, 15.128, 45.546

■ 11, 22.303, 40.159

■ 16, 12.204, 45.557

■ 10, 24.281, 38.688

■ 17, 9.450, 45.677

■ 18, 6.867, 45.889

■ 20, 4.449, 46.173

■ 21, 2.186, 46.488

■ 23, 0.066, 43.809

■ 24, 1.925, 227.554

■ 26, 3.797, 227.975

# Harmonies

# Complementary

The Complementary color scheme is a pair of colors which are on the opposite of each other on the color wheel.



13, 17.888, 44.635



16, 11.791, 234.490

# Rectangle

The Rectangle color scheme consists of four colors that form a rectangle on the color wheel.



13, 17.888, 44.635



13, 17.888, 94.635



13, 17.888, 224.635



13, 17.888, 274.635

# Sweetspot

The Sweet Spot groups the original color and five complimentary colors.



13, 17.887, 44.639



26, 5.839, 46.119



12, 25.120, 336.762



12, 3.880, 46.104



67, 0.008, 296.813



14, 0.003, 296.813



# Same Dimension

The Same Dimension uses a secret algorithm to generate beautiful new colors.



13, 17.887, 44.639



16, 28.175, 44.757



19, 19.672, 89.688



9, 1.202, 46.542



20, 41.931, 44.748



50, 86.359, 45.439





# Inverse Universe

The Inverse Universe completely reimagines the original color for something new.



16, 11.791, 234.490



21, 16.309, 238.886



10, 21.090, 288.415



10, 1.155, 227.530



26, 21.584, 245.316

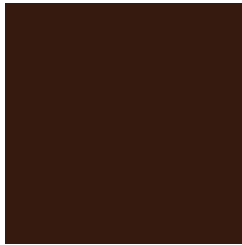


62, 41.615, 249.518



# Previews

## White Background



This preview shows how the CIELCh color 13, 17.888, 44.635 looks on a white background.

## Color Contrast Check

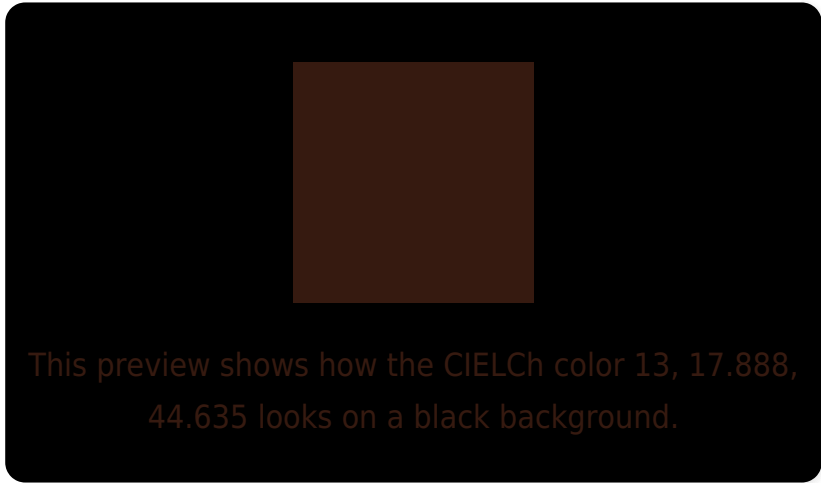
Large Text (above 18pt) WCAG AA ✓ Pass

Any Text WCAG AA ✓ Pass

Large Text (above 18pt) WCAG AAA ✓ Pass

Any Text WCAG AAA ✓ Pass

# Black Background



## Color Contrast Check

Large Text (above 18pt) WCAG AA × Fail

Any Text WCAG AA × Fail

Large Text (above 18pt) WCAG AAA × Fail

Any Text WCAG AAA × Fail

If you want to check with other color combinations, try the [Color Contrast Checker](#).

**CIELCh 13, 17.888, 44.635**

## **Background**



This preview shows how black text looks on a background with the CIELCh color 13, 17.888, 44.635.

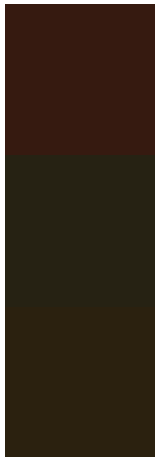


This preview shows how white text looks on a background with the CIELCh color 13, 17.888, 44.635.

# Color Blindness Simulation

Color vision deficiency is a very complex topic, and I could not describe the different causes any better than Wikipedia does, so if you want to learn more, you should check out their [article about color blindness](#).

## Dichromacy



### Original Color

13, 17.888, 44.635

### Protanopia

13, 10.771, 95.157

### Deuteranopia

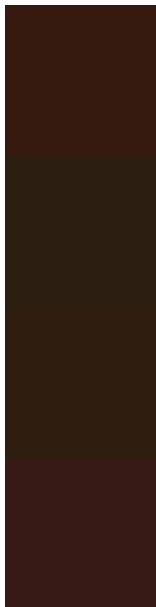
13, 13.566, 81.870



**Tritanopia**  
13, 16.173, 21.989



# Trichromacy



## Original Color

13, 17.888, 44.635

## Protanomaly

13, 11.902, 69.146

## Deuteranomaly

13, 14.383, 64.415

## Tritanomaly

13, 16.981, 31.311

# Monochromacy



## Original Color

13, 17.888, 44.635

## Achromatopsia

13, 0.003, 296.813

## Achromatomaly

12, 6.301, 40.660

# CSS Examples

## Text

The CSS property to change the color of the text to CIELCh 13, 17.888, 44.635 is called "color". The color property can be set on classes, ids or directly on the HTML element.

This example shows how text in the color `rgb(54, 26, 16)` looks like.

```
.text, #text, p{  
    color:rgb(54, 26, 16)  
}
```

If you want to add a text shadow in that color use the text-shadow property, you can generate a text shadow directly with our [CSS Text Shadow Generator](#).

Here you see how black text with a 4 pixel rgb(54, 26, 16) colored shadow looks like.

```
.shadow{ text-shadow: 4px 4px 2px rgb(54, 26, 16) }
```

## Border

The CSS property to change the border of an element to CIELCh 13, 17.888, 44.635 is called "border". The border property can be set on classes, ids or directly on the HTML element.

This example shows the color as border, it can be applied via the CSS property "border" or "border-color".

```
.border, #border, table{ border:4px solid rgb(54, 26, 16) }
```

If only the border color should be changed use the property `border-color`.

```
.border{ border-color:rgb(54, 26, 16) }
```

If you want to add a box shadow in that color use:

Here you see how a box with a 4 pixel `rgb(54, 26, 16)` colored shadow looks like.

```
.boxshadow{ -moz-box-shadow:4px 4px 4px  
4px rgb(54, 26, 16); -webkit-box-  
shadow:4px 4px 4px 4px rgb(54, 26, 16);  
box-shadow:4px 4px 4px 4px rgb(54, 26, 16)  
}
```

# Background

The CSS property to change the background color of an element to CIELCh 13, 17.888, 44.635 is called "background". The background property can be set on classes, ids or directly on the HTML element.

```
.background, #background, body{  
background: rgb(54, 26, 16) }
```

If only the background color should be changed can be used:

```
.background{ background-color: rgb(54, 26,  
16) }
```

This example shows the color as background, it is applied via the CSS property "background".

To optimize and compress your CSS code, you can use our [online CSS compressor and optimizer](#) based on csstidy. If you want to create a linear or radial gradient as background or border, check our [CSS Gradient Generator](#).

# Hey! You found this booklet interesting? Support Converting Colors with the new Membership Option!

The pro membership hides all ads, plus gives you double the colors in the color bucket, and more awesome pro features!

**[Learn more, Memberships starting at \\$2.50/m!](#)**

**Follow me  
on Twitter!**

@ConvertingColor