

Converting Colors

CIELCh(13, 21.903, 52.105)

Have a look what the booklet for
CIELCh(13, 21.903, 52.105) contains.

CIELCh(13, 21.842, 51.299)	3
<i>Conversions</i>	4
<i>Details</i>	6
<i>Harmonies</i>	11
<i>Previews</i>	20
<i>Color Blindness Simulation</i>	23
<i>CSS Examples</i>	26

Color

CIELCh(13, 21.842, 51.299)

Conversions

Conversions Part 1

Format	Color
Hex	381906
RGB	56, 25, 6
RGB Percent	22%, 10%, 2%
CMY	0.7797, 0.9013, 0.9753
CMYK	0.00, 0.55, 0.89, 0.78
HSL	23°, 80%, 12%
HSV	23°, 89%, 22%
XYZ	2.0270, 1.5625, 0.3753
YIQ	32.1030, 24.5750, 0.6630

Conversions

Conversions Part 2

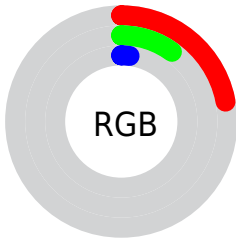
Format	Color
R _Y B	56, 37, 6
Decimal	3676422
CIE Lab	13.00, 13.66, 17.05
CIE LCh	13, 21.842, 51.299
Yxy	1.5625, 0.5113, 0.3941
Android (android.graphics.Color)	4281866502 (0xFF381906)
YUV	32.1030, -12.8688, 20.9577
Hunter-Lab	12.5000, 7.0705, 6.9699

Details

The CIELCh color **13, 21.842, 51.299** is a dark color, and the websafe version is hex **330000**. A complement of this color would be **14, 15.768, 257.998**, and the grayscale version is **12, 0.003, 296.813**.

A 20% lighter version of the original color is **33, 22.077, 51.780**, and **0, 0.000, 0.000** is the 20% darker color. If you saturate the color by 10%, you get **12, 23.784, 49.217**, and if you desaturate by 10%, it is **14, 19.892, 53.930**.

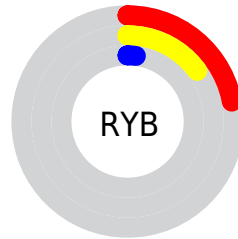
Distribution



Red (22%)

Green (10%)

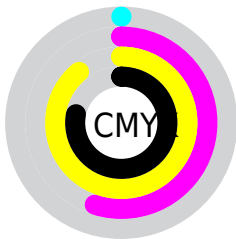
Blue (2%)



Red (22%)

Yellow (15%)

Blue (2%)

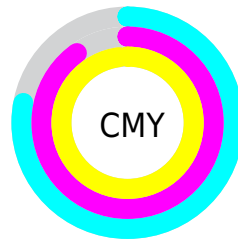


Cyan (0%)

Magenta (55%)

Yellow (89%)

Black (78%)



Cyan (78%)

Magenta (90%)

Yellow (98%)


Brightness & Saturation Gradients

These gradients show how the CIELCh color 13, 21.842, 51.299 changes by changing the brightness by 10 percent. The first figure shows a shift by +10% for each color and the second figure -10%.

Similar to the brightness gradients but the following saturation gradients show a change of the CIELCh color 13, 21.842, 51.299 by changing the saturation by 10% instead.

 13, 21.842, 51.299

 13, 21.842, 51.299

 100, 21.842,
51.299

 3, 21.842, 51.299

 33, 21.842, 51.299

 0, 21.842, 51.299

 43, 21.842, 51.299

 53, 21.842, 51.299

 63, 21.842, 51.299

 73, 21.842, 51.299

 83, 21.842, 51.299

 93, 21.842, 51.299

■ 13, 21.842, 51.299

■ 13, 21.842, 51.299

■ 12, 23.784, 49.217

■ 14, 19.892, 53.930

■ 12, 24.016, 49.007

■ 15, 17.549, 55.972

■ 16, 14.688, 56.851

■ 17, 11.845, 57.515

■ 19, 9.146, 58.220

■ 20, 6.595, 58.960

■ 21, 4.184, 59.722

■ 22, 1.905, 60.468

■ 24, 0.253, 242.122

Harmonies

Complementary

The Complementary color scheme is a pair of colors which are on the opposite of each other on the color wheel.



13, 21.842, 51.299



14, 15.768, 257.998

Rectangle

The Rectangle color scheme consists of four colors that form a rectangle on the color wheel.



13, 21.842, 51.299



13, 21.842, 101.299



13, 21.842, 231.299



13, 21.842, 281.299

Sweetspot

The Sweet Spot groups the original color and five complimentary colors.



13, 21.841, 51.303



27, 7.766, 58.994



10, 28.401, 344.903



12, 5.297, 58.926



68, 0.008, 296.813



15, 0.003, 296.813

Same Dimension

The Same Dimension uses a secret algorithm to generate beautiful new colors.



13, 21.841, 51.303



17, 32.356, 51.415



20, 26.356, 95.955



10, 1.194, 60.501



22, 40.044, 52.491



53, 81.122, 51.327

Inverse Universe

The Inverse Universe completely reimagines the original color for something new.



14, 15.768, 257.998



18, 21.538, 263.584



6, 31.867, 296.969



10, 1.160, 242.113



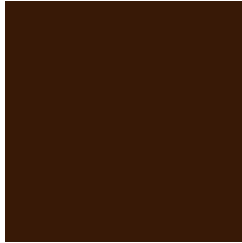
23, 25.484, 265.372



55, 50.794, 269.896

Previews

White Background



This preview shows how the CIELCh color 13, 21.842, 51.299 looks on a white background.

Color Contrast Check

Large Text (above 18pt) WCAG AA ✓ Pass

Any Text WCAG AA ✓ Pass

Large Text (above 18pt) WCAG AAA ✓ Pass

Any Text WCAG AAA ✓ Pass

Black Background



This preview shows how the CIE LCh color 13, 21.842, 51.299 looks on a black background.

Color Contrast Check

Large Text (above 18pt) WCAG AA × Fail

Any Text WCAG AA × Fail

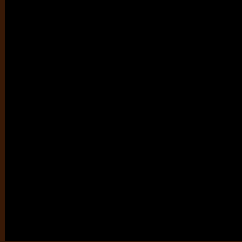
Large Text (above 18pt) WCAG AAA × Fail

Any Text WCAG AAA × Fail

If you want to check with other color combinations, try the [Color Contrast Checker](#).

CIELCh 13, 21.842, 51.299

Background



This preview shows how black text looks on a background with the CIELCh color 13, 21.842, 51.299.

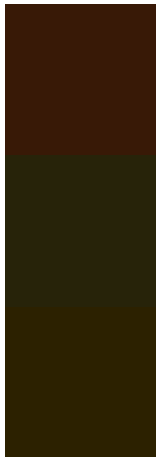


This preview shows how white text looks on a background with the CIELCh color 13, 21.842, 51.299.

Color Blindness Simulation

Color vision deficiency is a very complex topic, and I could not describe the different causes any better than Wikipedia does, so if you want to learn more, you should check out their [article about color blindness](#).

Dichromacy



Original Color

13, 21.842, 51.299

Protanopia

14, 16.387, 98.129

Deuteranopia

13, 19.794, 86.876



Tritanopia
13, 18.313, 21.106

Trichromacy



Original Color
13, 21.842, 51.299

Protanomaly
13, 16.412, 76.759

Deuteranomaly
13, 19.385, 73.081

Tritanomaly
13, 19.491, 36.336

Monochromacy



Original Color
13, 21.842, 51.299

Achromatopsia
12, 0.003, 296.813

Achromatomaly
12, 7.977, 59.203

CSS Examples

Text

The CSS property to change the color of the text to CIELCh 13, 21.842, 51.299 is called "color". The color property can be set on classes, ids or directly on the HTML element.

This example shows how text in the color `rgb(56, 25, 6)` looks like.

```
.text, #text, p{  
    color:rgb(56, 25, 6)  
}
```

If you want to add a text shadow in that color use the text-shadow property, you can generate a text shadow directly with our [CSS Text Shadow Generator](#).

Here you see how black text with a 4 pixel rgb(56, 25, 6) colored shadow looks like.

```
.shadow{ text-shadow: 4px 4px 2px rgb(56, 25, 6) }
```

Border

The CSS property to change the border of an element to CIELCh 13, 21.842, 51.299 is called "border". The border property can be set on classes, ids or directly on the HTML element.

This example shows the color as border, it can be applied via the CSS property "border" or "border-color".

```
.border, #border, table{ border:4px solid rgb(56, 25, 6) }
```

If only the border color should be changed use the property `border-color`.

```
.border{ border-color:rgb(56, 25, 6) }
```

If you want to add a box shadow in that color use:

Here you see how a box with a 4 pixel `rgb(56, 25, 6)` colored shadow looks like.

```
.boxshadow{ -moz-box-shadow:4px 4px 4px  
4px rgb(56, 25, 6); -webkit-box-shadow:4px  
4px 4px 4px rgb(56, 25, 6); box-shadow:4px  
4px 4px 4px rgb(56, 25, 6) }
```

Background

The CSS property to change the background color of an element to CIELCh 13, 21.842, 51.299 is called "background". The background property can be set on classes, ids or directly on the HTML element.

```
.background, #background, body{  
background: rgb(56, 25, 6) }
```

If only the background color should be changed can be used:

```
.background{ background-color: rgb(56, 25,  
6) }
```

This example shows the color as background, it is applied via the CSS property "background".

To optimize and compress your CSS code, you can use our [online CSS compressor and optimizer](#) based on csstidy. If you want to create a linear or radial gradient as background or border, check our [CSS Gradient Generator](#).

Hey! You found this booklet interesting? Support Converting Colors with the new Membership Option!

The pro membership hides all ads, plus gives you double the colors in the color bucket, and more awesome pro features!

[Learn more, Memberships starting at \\$2.50/m!](#)

**Follow me
on Twitter!**

@ConvertingColor