

# Converting Colors

CIELCh(14, 23.488, 26.987)

Have a look what the booklet for  
CIELCh(14, 23.488, 26.987) contains.

<b>CIELCh(14, 23.488, 26.987)</b> .....	3
<b><i>Conversions</i></b> .....	4
<b><i>Details</i></b> .....	6
<b><i>Harmonies</i></b> .....	11
<b><i>Previews</i></b> .....	20
<b><i>Color Blindness Simulation</i></b> .....	23
<b><i>CSS Examples</i></b> .....	26

**Color**

**CIELCh(14, 23.488, 26.987)**

# Conversions

## Conversions Part 1

Format	Color
Hex	411616
RGB	65, 22, 22
RGB Percent	25%, 9%, 9%
CMY	0.7465, 0.9150, 0.9149
CMYK	0.00, 0.66, 0.66, 0.75
HSL	360°, 50%, 17%
HSV	360°, 66%, 25%
XYZ	2.5786, 1.7298, 0.9424
YIQ	34.8570, 25.6280, 9.1160

# Conversions

## Conversions Part 2

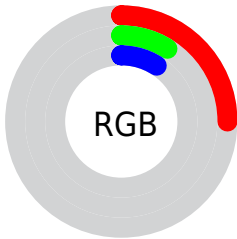
<b>Format</b>	<b>Color</b>
<b>R<sub>YB</sub></b>	65, 22, 22
Decimal	4265494
CIE Lab	14.00, 20.93, 10.66
CIE LCh	14, 23.488, 26.987
Yxy	1.7298, 0.4911, 0.3294
Android (android.graphics.Color)	4282455574 (0xFF411616)
YUV	34.8570, -6.3385, 26.4354
Hunter-Lab	13.1521, 11.9812, 4.9582

# Details

The CIELCh color **14, 23.488, 26.987** is a dark color, and the websafe version is hex **330000**. A complement of this color would be **25, 15.223, 196.860**, and the grayscale version is **14, 0.003, 296.813**.

A 20% lighter version of the original color is **34, 23.485, 27.743**, and **0, 0.000, 0.000** is the 20% darker color. If you saturate the color by 10%, you get **13, 27.092, 28.133**, and if you desaturate by 10%, it is **16, 19.521, 24.979**.

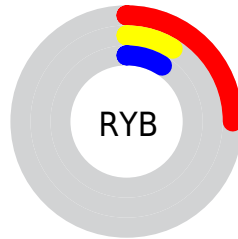
# Distribution



 Red (25%)

 Green (9%)

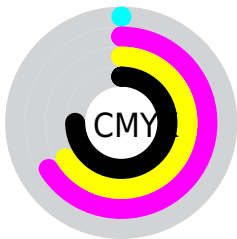
 Blue (9%)



 Red (25%)

 Yellow (9%)

 Blue (9%)

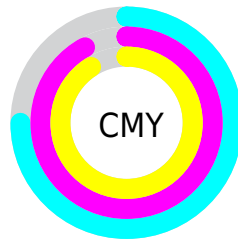


 Cyan (0%)

 Magenta (66%)

 Yellow (66%)

 Black (75%)



 Cyan (75%)

 Magenta (92%)

 Yellow (91%)

# Brightness & Saturation Gradients


These gradients show how the CIELCh color 14, 23.488, 26.987 changes by changing the brightness by 10 percent. The first figure shows a shift by +10% for each color and the second figure -10%.

Similar to the brightness gradients but the following saturation gradients show a change of the CIELCh color 14, 23.488, 26.987 by changing the saturation by 10% instead.



 14, 23.488, 26.987

 14, 23.488, 26.987

 100, 23.488,  
26.987

 4, 23.488, 26.987

 34, 23.488, 26.987

 0, 23.488, 26.987

 44, 23.488, 26.987

 54, 23.488, 26.987

 64, 23.488, 26.987

 74, 23.488, 26.987

 84, 23.488, 26.987

 94, 23.488, 26.987

■ 14, 23.488, 26.987

■ 14, 23.488, 26.987

■ 13, 27.092, 28.133

■ 16, 19.521, 24.979

■ 11, 29.972, 28.203

■ 18, 15.636, 23.374

■ 10, 32.733, 27.757

■ 19, 11.901, 22.103

■ 10, 33.768, 27.489

■ 22, 8.357, 21.094

■ 24, 5.023, 20.281

■ 26, 1.904, 19.568

■ 28, 1.009, 199.434

■ 30, 3.729, 198.842

■ 33, 6.272, 198.477

# Harmonies

# Complementary

The Complementary color scheme is a pair of colors which are on the opposite of each other on the color wheel.



14, 23.488, 26.987



25, 15.223, 196.860

# Rectangle

The Rectangle color scheme consists of four colors that form a rectangle on the color wheel.



14, 23.488, 26.987



14, 23.488, 76.987



14, 23.488, 206.987



14, 23.488, 256.987

# Sweetspot

The Sweet Spot groups the original color and five complimentary colors.



14, 23.487, 26.990



30, 7.720, 20.620



16, 32.662, 326.862



14, 5.336, 20.717



70, 0.009, 296.813



18, 0.003, 296.813



# Same Dimension

The Same Dimension uses a secret algorithm to generate beautiful new colors.



14, 23.487, 26.990



17, 35.871, 31.178



19, 19.113, 66.466



12, 1.688, 19.722



18, 48.281, 35.235



47, 94.918, 39.979





# Inverse Universe

The Inverse Universe completely reimagines the original color for something new.



14, 23.487, 26.990



17, 35.871, 31.178



17, 15.817, 265.511



12, 1.688, 19.722



18, 48.281, 35.235

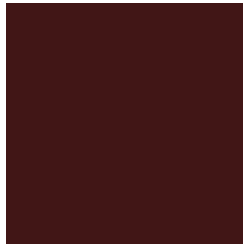


47, 94.918, 39.979



# Previews

## White Background



This preview shows how the CIELCh color 14, 23.488, 26.987 looks on a white background.

## Color Contrast Check

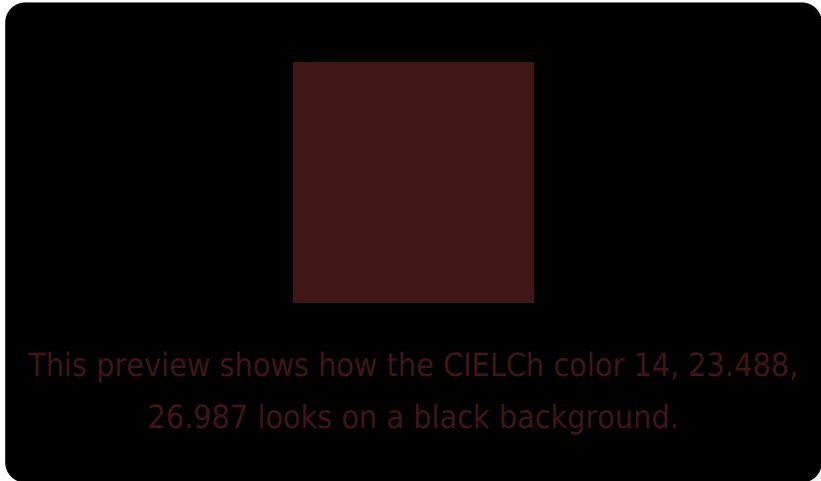
Large Text (above 18pt) WCAG AA ✓ Pass

Any Text WCAG AA ✓ Pass

Large Text (above 18pt) WCAG AAA ✓ Pass

Any Text WCAG AAA ✓ Pass

# Black Background



## Color Contrast Check

Large Text (above 18pt) WCAG AA × Fail

Any Text WCAG AA × Fail

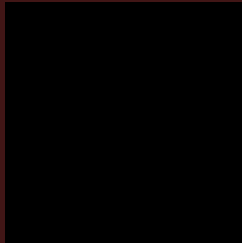
Large Text (above 18pt) WCAG AAA × Fail

Any Text WCAG AAA × Fail

If you want to check with other color combinations, try the [Color Contrast Checker](#).

**CIELCh 14, 23.488, 26.987**

## **Background**



This preview shows how black text looks on a background with the CIELCh color 14, 23.488, 26.987.



This preview shows how white text looks on a background with the CIELCh color 14, 23.488, 26.987.

# Color Blindness Simulation

Color vision deficiency is a very complex topic, and I could not describe the different causes any better than Wikipedia does, so if you want to learn more, you should check out their [article about color blindness](#).

## Dichromacy



### Original Color

14, 23.488, 26.987

### Protanopia

15, 6.528, 94.369

### Deuteranopia

14, 12.627, 80.483



**Tritanopia**  
14, 23.266, 25.367



# Trichromacy



## Original Color

14, 23.488, 26.987

## Protanomaly

14, 10.562, 41.068

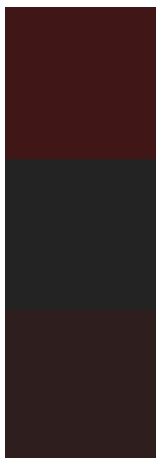
## Deuteranomaly

14, 14.667, 50.144

## Tritanomaly

14, 23.266, 25.367

# Monochromacy



## Original Color

14, 23.488, 26.987

## Achromatopsia

14, 0.003, 296.813

## Achromatomaly

13, 8.421, 21.720

# CSS Examples

## Text

The CSS property to change the color of the text to CIELCh 14, 23.488, 26.987 is called "color". The color property can be set on classes, ids or directly on the HTML element.

This example shows how text in the color `rgb(65, 22, 22)` looks like.

```
.text, #text, p{  
    color:rgb(65, 22, 22)  
}
```

If you want to add a text shadow in that color use the text-shadow property, you can generate a text shadow directly with our [CSS Text Shadow Generator](#).

Here you see how black text with a 4 pixel rgb(65, 22, 22) colored shadow looks like.

```
.shadow{ text-shadow: 4px 4px 2px rgb(65, 22, 22) }
```

## Border

The CSS property to change the border of an element to CIELCh 14, 23.488, 26.987 is called "border". The border property can be set on classes, ids or directly on the HTML element.

This example shows the color as border, it can be applied via the CSS property "border" or "border-color".

```
.border, #border, table{ border:4px solid rgb(65, 22, 22) }
```

If only the border color should be changed use the property `border-color`.

```
.border{ border-color:rgb(65, 22, 22) }
```

If you want to add a box shadow in that color use:

Here you see how a box with a 4 pixel `rgb(65, 22, 22)` colored shadow looks like.

```
.boxshadow{ -moz-box-shadow:4px 4px 4px  
4px rgb(65, 22, 22); -webkit-box-  
shadow:4px 4px 4px 4px rgb(65, 22, 22);  
box-shadow:4px 4px 4px 4px rgb(65, 22, 22)  
}
```

# Background

The CSS property to change the background color of an element to CIELCh 14, 23.488, 26.987 is called "background". The background property can be set on classes, ids or directly on the HTML element.

```
.background, #background, body{  
background: rgb(65, 22, 22) }
```

If only the background color should be changed can be used:

```
.background{ background-color: rgb(65, 22,  
22) }
```

This example shows the color as background, it is applied via the CSS property "background".

To optimize and compress your CSS code, you can use our [online CSS compressor and optimizer](#) based on csstidy. If you want to create a linear or radial gradient as background or border, check our [CSS Gradient Generator](#).

# Hey! You found this booklet interesting? Support Converting Colors with the new Membership Option!

The pro membership hides all ads, plus gives you double the colors in the color bucket, and more awesome pro features!

**[Learn more, Memberships starting at \\$2.50/m!](#)**

**Follow me  
on Twitter!**

@ConvertingColor