

Converting Colors

CIELCh(14, 24.667, 39.607)

Have a look what the booklet for
CIELCh(14, 24.667, 39.607) contains.

CIELCh(14, 24.876, 39.463)	3
<i>Conversions</i>	4
<i>Details</i>	6
<i>Harmonies</i>	11
<i>Previews</i>	20
<i>Color Blindness Simulation</i>	23
<i>CSS Examples</i>	26

Color

CIELCh(14, 24.876, 39.463)

Conversions

Conversions Part 1

Format	Color
Hex	40170D
RGB	64, 23, 13
RGB Percent	25%, 9%, 5%
CMY	0.7491, 0.9099, 0.9492
CMYK	0.00, 0.64, 0.80, 0.75
HSL	12°, 66%, 15%
HSV	12°, 80%, 25%
XYZ	2.4908, 1.7298, 0.5822
YIQ	34.1190, 27.6460, 5.5820

Conversions

Conversions Part 2

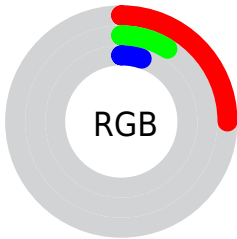
Format	Color
RYB	64, 25, 13
Decimal	4200205
CIELab	14.00, 19.21, 15.81
CIELCh	14, 24.876, 39.463
Yxy	1.7298, 0.5186, 0.3602
Android (android.graphics.Color)	4282390285 (0xFF40170D)
YUV	34.1190, -10.4117, 26.2056
Hunter-Lab	13.1521, 10.7893, 6.5820

Details

The CIELCh color **14, 24.876, 39.463** is a dark color, and the websafe version is hex **330000**. A complement of this color would be **20, 14.424, 225.787**, and the grayscale version is **13, 0.003, 296.813**.

A 20% lighter version of the original color is **34, 24.883, 38.615**, and **0, 0.000, 0.000** is the 20% darker color. If you saturate the color by 10%, you get **13, 27.575, 37.876**, and if you desaturate by 10%, it is **15, 21.632, 40.208**.

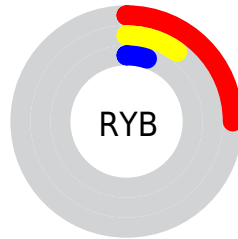
Distribution



Red (25%)

Green (9%)

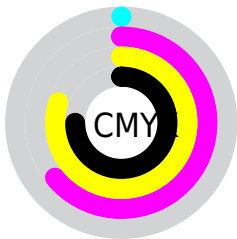
Blue (5%)



Red (25%)

Yellow (10%)

Blue (5%)

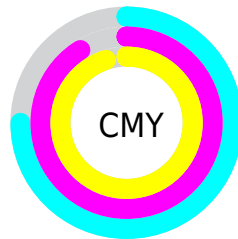


Cyan (0%)

Magenta (64%)

Yellow (80%)

Black (75%)



Cyan (75%)

Magenta (91%)

Yellow (95%)


Brightness & Saturation Gradients

These gradients show how the CIELCh color 14, 24.876, 39.463 changes by changing the brightness by 10 percent. The first figure shows a shift by +10% for each color and the second figure -10%.

Similar to the brightness gradients but the following saturation gradients show a change of the CIELCh color 14, 24.876, 39.463 by changing the saturation by 10% instead.

 14, 24.876, 39.463

 14, 24.876, 39.463

 100, 24.876,
39.463

 4, 24.876, 39.463

 34, 24.876, 39.463

 0, 24.876, 39.463

 44, 24.876, 39.463

 54, 24.876, 39.463

 64, 24.876, 39.463

 74, 24.876, 39.463

 84, 24.876, 39.463

 94, 24.876, 39.463

■ 14, 24.876, 39.463

■ 14, 24.876, 39.463

■ 13, 27.575, 37.876

■ 15, 21.632, 40.208

■ 12, 30.079, 37.023

■ 17, 17.960, 39.664

■ 12, 30.143, 37.012

■ 18, 14.441, 39.218

■ 20, 11.128, 38.938

■ 22, 8.028, 38.799

■ 24, 5.137, 38.770

■ 25, 2.444, 38.800

■ 27, 0.066, 222.737

■ 29, 2.408, 219.367

Harmonies

Complementary

The Complementary color scheme is a pair of colors which are on the opposite of each other on the color wheel.



14, 24.876, 39.463



20, 14.424, 225.787

Rectangle

The Rectangle color scheme consists of four colors that form a rectangle on the color wheel.



14, 24.876, 39.463



14, 24.876, 89.463



14, 24.876, 219.463



14, 24.876, 269.463

Sweetspot

The Sweet Spot groups the original color and five complimentary colors.



14, 24.875, 39.466



30, 8.004, 38.774



14, 32.812, 334.630



14, 5.580, 38.780



70, 0.009, 296.813



18, 0.003, 296.813

Same Dimension

The Same Dimension uses a secret algorithm to generate beautiful new colors.



14, 24.875, 39.466



17, 38.342, 40.514



21, 24.336, 82.906



12, 1.433, 38.800



20, 45.328, 41.727



49, 90.611, 43.090

Inverse Universe

The Inverse Universe completely reimagines the original color for something new.



20, 14.424, 225.787



26, 19.137, 230.474



12, 25.387, 287.328



12, 1.369, 219.354



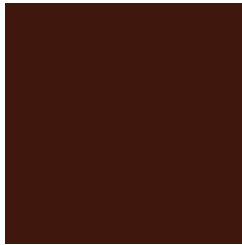
30, 21.497, 232.172



68, 39.867, 235.294

Previews

White Background



This preview shows how the CIELCh color 14, 24.876, 39.463 looks on a white background.

Color Contrast Check

Large Text (above 18pt) WCAG AA ✓ Pass

Any Text WCAG AA ✓ Pass

Large Text (above 18pt) WCAG AAA ✓ Pass

Any Text WCAG AAA ✓ Pass

Black Background



This preview shows how the CIELCh color 14, 24.876, 39.463 looks on a black background.

Color Contrast Check

Large Text (above 18pt) WCAG AA × Fail

Any Text WCAG AA × Fail

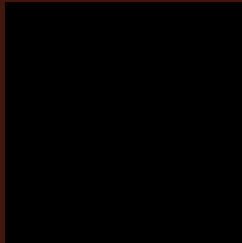
Large Text (above 18pt) WCAG AAA × Fail

Any Text WCAG AAA × Fail

If you want to check with other color combinations, try the [Color Contrast Checker](#).

CIELCh 14, 24.876, 39.463

Background



This preview shows how black text looks on a background with the CIELCh color 14, 24.876, 39.463.

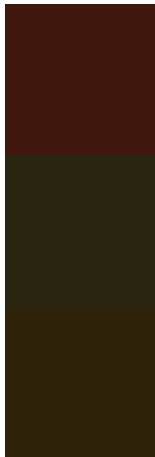


This preview shows how white text looks on a background with the CIELCh color 14, 24.876, 39.463.

Color Blindness Simulation

Color vision deficiency is a very complex topic, and I could not describe the different causes any better than Wikipedia does, so if you want to learn more, you should check out their [article about color blindness](#).

Dichromacy



Original Color

14, 24.876, 39.463

Protanopia

15, 13.885, 97.071

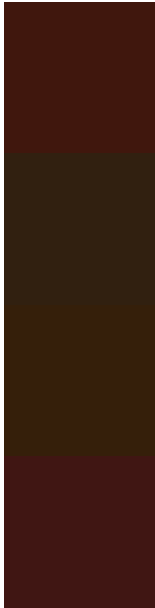
Deuteranopia

14, 17.594, 84.765



Tritanopia
14, 22.750, 25.167

Trichromacy



Original Color

14, 24.876, 39.463

Protanomaly

14, 14.970, 66.416

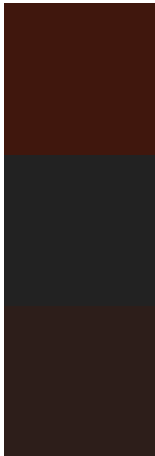
Deuteranomaly

14, 18.903, 63.929

Tritanomaly

14, 23.684, 31.320

Monochromacy



Original Color

14, 24.876, 39.463

Achromatopsia

13, 0.003, 296.813

Achromatomaly

13, 8.707, 40.326

CSS Examples

Text

The CSS property to change the color of the text to CIELCh 14, 24.876, 39.463 is called "color". The color property can be set on classes, ids or directly on the HTML element.

This example shows how text in the color `rgb(64, 23, 13)` looks like.

```
.text, #text, p{  
  color:rgb(64, 23, 13)  
}
```

If you want to add a text shadow in that color use the text-shadow property, you can generate a text shadow directly with our [CSS Text Shadow Generator](#).

Here you see how black text with a 4 pixel rgb(64, 23, 13) colored shadow looks like.

```
.shadow{ text-shadow: 4px 4px 2px rgb(64, 23, 13) }
```

Border

The CSS property to change the border of an element to CIELCh 14, 24.876, 39.463 is called "border". The border property can be set on classes, ids or directly on the HTML element.

This example shows the color as border, it can be applied via the CSS property "border" or "border-color".

```
.border, #border, table{ border:4px solid rgb(64, 23, 13) }
```

If only the border color should be changed use the property border-color.

```
.border{ border-color:rgb(64, 23, 13) }
```

If you want to add a box shadow in that color use:

Here you see how a box with a 4 pixel rgb(64, 23, 13) colored shadow looks like.

```
.boxshadow{ -moz-box-shadow:4px 4px 4px  
4px rgb(64, 23, 13); -webkit-box-  
shadow:4px 4px 4px 4px rgb(64, 23, 13);  
box-shadow:4px 4px 4px 4px rgb(64, 23, 13)  
}
```

Background

The CSS property to change the background color of an element to CIELCh 14, 24.876, 39.463 is called "background". The background property can be set on classes, ids or directly on the HTML element.

```
.background, #background, body{  
background: rgb(64, 23, 13) }
```

If only the background color should be changed can be used:

```
.background{ background-color: rgb(64, 23,  
13) }
```

This example shows the color as background, it is applied via the CSS property "background".

To optimize and compress your CSS code, you can use our [online CSS compressor and optimizer](#) based on csstidy. If you want to create a linear or radial gradient as background or border, check our [CSS Gradient Generator](#).

Hey! You found this booklet
interesting? Support Converting
Colors with the new Membership
Option!

The pro membership hides all ads, plus gives you
double the colors in the color bucket, and more
awesome pro features!

[Learn more, Memberships starting at \\$2.50/m!](#)

**Follow me
on Twitter!**

@ConvertingColor