

Converting Colors

CIELCh(14, 26.543, 38.836)

Have a look what the booklet for
CIELCh(14, 26.543, 38.836) contains.

CIELCh(14, 26.675, 39.532)	3
<i>Conversions</i>	4
<i>Details</i>	6
<i>Harmonies</i>	11
<i>Previews</i>	20
<i>Color Blindness Simulation</i>	23
<i>CSS Examples</i>	26

Color

CIELCh(14, 26.675, 39.532)

Conversions

Conversions Part 1

Format	Color
Hex	42160A
RGB	66, 22, 10
RGB Percent	26%, 9%, 4%
CMY	0.7426, 0.9150, 0.9588
CMYK	0.00, 0.67, 0.84, 0.74
HSL	12°, 72%, 15%
HSV	12°, 84%, 26%
XYZ	2.5603, 1.7298, 0.5005
YIQ	33.7880, 30.0760, 5.5960

Conversions

Conversions Part 2

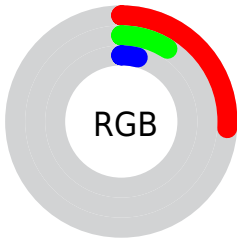
Format	Color
R_{YB}	66, 25, 10
Decimal	4331018
CIE Lab	14.00, 20.57, 16.98
CIE LCh	14, 26.675, 39.532
Yxy	1.7298, 0.5344, 0.3611
Android (android.graphics.Color)	4282521098 (0xFF42160A)
YUV	33.7880, -11.7275, 28.2499
Hunter-Lab	13.1521, 11.7324, 6.9501

Details

The CIELCh color **14, 26.675, 39.532** is a dark color, and the websafe version is hex **330000**. A complement of this color would be **21, 15.079, 227.852**, and the grayscale version is **13, 0.003, 296.813**.

A 20% lighter version of the original color is **34, 26.908, 40.214**, and **0, 0.000, 0.000** is the 20% darker color. If you saturate the color by 10%, you get **13, 29.337, 38.153**, and if you desaturate by 10%, it is **15, 23.587, 40.720**.

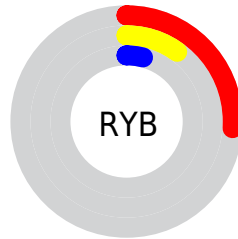
Distribution



 Red (26%)

 Green (9%)

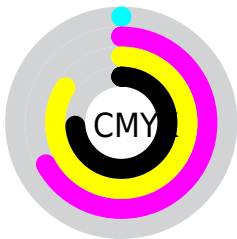
 Blue (4%)



 Red (26%)

 Yellow (10%)

 Blue (4%)

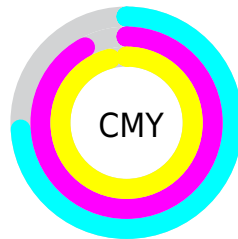


 Cyan (0%)

 Magenta (67%)

 Yellow (84%)

 Black (74%)



 Cyan (74%)

 Magenta (92%)

 Yellow (96%)


Brightness & Saturation Gradients

These gradients show how the CIELCh color 14, 26.675, 39.532 changes by changing the brightness by 10 percent. The first figure shows a shift by +10% for each color and the second figure -10%.

Similar to the brightness gradients but the following saturation gradients show a change of the CIELCh color 14, 26.675, 39.532 by changing the saturation by 10% instead.

 14, 26.675, 39.532

 14, 26.675, 39.532

 100, 26.675,
39.532

 4, 26.675, 39.532

 34, 26.675, 39.532

 0, 26.675, 39.532

 44, 26.675, 39.532

 54, 26.675, 39.532

 64, 26.675, 39.532

 74, 26.675, 39.532

 84, 26.675, 39.532

 94, 26.675, 39.532

■ 14, 26.675, 39.532

■ 14, 26.675, 39.532

■ 13, 29.337, 38.153

■ 15, 23.587, 40.720

■ 12, 30.857, 37.752

■ 17, 19.889, 40.445

■ 18, 16.218, 39.959

■ 20, 12.749, 39.646

■ 22, 9.498, 39.483

■ 23, 6.463, 39.441

■ 25, 3.636, 39.484

■ 27, 1.003, 39.460

■ 29, 1.453, 220.090

Harmonies

Complementary

The Complementary color scheme is a pair of colors which are on the opposite of each other on the color wheel.



14, 26.675, 39.532



21, 15.079, 227.852

Rectangle

The Rectangle color scheme consists of four colors that form a rectangle on the color wheel.



14, 26.675, 39.532



14, 26.675, 89.532



14, 26.675, 219.532



14, 26.675, 269.532

Sweetspot

The Sweet Spot groups the original color and five complimentary colors.



14, 26.674, 39.535



30, 8.338, 39.441



14, 34.146, 335.707



14, 5.771, 39.444



70, 0.009, 296.813



18, 0.003, 296.813

Same Dimension

The Same Dimension uses a secret algorithm to generate beautiful new colors.



14, 26.674, 39.535



17, 39.549, 40.772



21, 26.119, 83.618



12, 1.428, 39.514



20, 45.217, 42.014



49, 90.376, 43.277

Inverse Universe

The Inverse Universe completely reimagines the original color for something new.



21, 15.079, 227.852



26, 19.511, 232.695



11, 28.171, 289.759



12, 1.364, 220.112



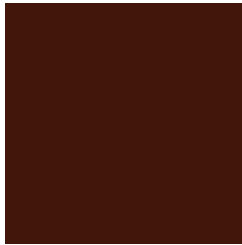
30, 21.539, 233.478



68, 40.000, 236.694

Previews

White Background



This preview shows how the CIELCh color 14, 26.675, 39.532 looks on a white background.

Color Contrast Check

Large Text (above 18pt) WCAG AA ✓ Pass

Any Text WCAG AA ✓ Pass

Large Text (above 18pt) WCAG AAA ✓ Pass

Any Text WCAG AAA ✓ Pass

Black Background



This preview shows how the CIE LCh color 14, 26.675, 39.532 looks on a black background.

Color Contrast Check

Large Text (above 18pt) WCAG AA × Fail

Any Text WCAG AA × Fail

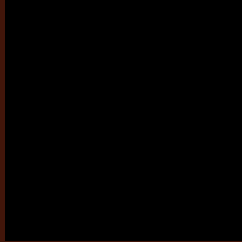
Large Text (above 18pt) WCAG AAA × Fail

Any Text WCAG AAA × Fail

If you want to check with other color combinations, try the [Color Contrast Checker](#).

CIELCh 14, 26.675, 39.532

Background



This preview shows how black text looks on a background with the CIELCh color 14, 26.675, 39.532.

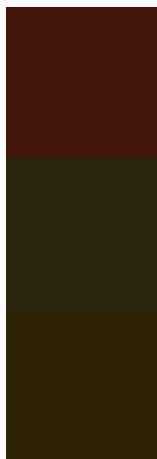


This preview shows how white text looks on a background with the CIELCh color 14, 26.675, 39.532.

Color Blindness Simulation

Color vision deficiency is a very complex topic, and I could not describe the different causes any better than Wikipedia does, so if you want to learn more, you should check out their [article about color blindness](#).

Dichromacy



Original Color

14, 26.891, 40.263

Protanopia

15, 15.484, 97.676

Deuteranopia

14, 19.370, 84.563



Tritanopia
14, 24.767, 24.830

Trichromacy



Original Color

14, 26.891, 40.263

Protanomaly

14, 16.544, 65.220

Deuteranomaly

14, 20.270, 62.634

Tritanomaly

14, 25.320, 31.464

Monochromacy



Original Color

14, 26.891, 40.263

Achromatopsia

13, 0.003, 296.813

Achromatomaly

13, 9.569, 43.091

CSS Examples

Text

The CSS property to change the color of the text to CIELCh 14, 26.675, 39.532 is called "color". The color property can be set on classes, ids or directly on the HTML element.

This example shows how text in the color `rgb(66, 22, 10)` looks like.

```
.text, #text, p{  
    color:rgb(66, 22, 10)  
}
```

If you want to add a text shadow in that color use the text-shadow property, you can generate a text shadow directly with our [CSS Text Shadow Generator](#).

Here you see how black text with a 4 pixel rgb(66, 22, 10) colored shadow looks like.

```
.shadow{ text-shadow: 4px 4px 2px rgb(66, 22, 10) }
```

Border

The CSS property to change the border of an element to CIELCh 14, 26.675, 39.532 is called "border". The border property can be set on classes, ids or directly on the HTML element.

This example shows the color as border, it can be applied via the CSS property "border" or "border-color".

```
.border, #border, table{ border:4px solid rgb(66, 22, 10) }
```

If only the border color should be changed use the property `border-color`.

```
.border{ border-color:rgb(66, 22, 10) }
```

If you want to add a box shadow in that color use:

Here you see how a box with a 4 pixel `rgb(66, 22, 10)` colored shadow looks like.

```
.boxshadow{ -moz-box-shadow:4px 4px 4px  
4px rgb(66, 22, 10); -webkit-box-  
shadow:4px 4px 4px 4px rgb(66, 22, 10);  
box-shadow:4px 4px 4px 4px rgb(66, 22, 10)  
}
```

Background

The CSS property to change the background color of an element to CIELCh 14, 26.675, 39.532 is called "background". The background property can be set on classes, ids or directly on the HTML element.

```
.background, #background, body{  
background: rgb(66, 22, 10) }
```

If only the background color should be changed can be used:

```
.background{ background-color: rgb(66, 22,  
10) }
```

This example shows the color as background, it is applied via the CSS property "background".

To optimize and compress your CSS code, you can use our [online CSS compressor and optimizer](#) based on csstidy. If you want to create a linear or radial gradient as background or border, check our [CSS Gradient Generator](#).

Hey! You found this booklet
interesting? Support Converting
Colors with the new Membership
Option!

The pro membership hides all ads, plus gives you
double the colors in the color bucket, and more
awesome pro features!

[Learn more, Memberships starting at \\$2.50/m!](#)

**Follow me
on Twitter!**

@ConvertingColor