

Converting Colors

CIELCh(14, 31.378, 36.475)

Have a look what the booklet for
CIELCh(14, 31.378, 36.475) contains.

CIELCh(14, 31.407, 36.798)	3
<i>Conversions</i>	4
<i>Details</i>	6
<i>Harmonies</i>	11
<i>Previews</i>	20
<i>Color Blindness Simulation</i>	23
<i>CSS Examples</i>	26

Color

CIELCh(14, 31.407, 36.798)

Conversions

Conversions Part 1

Format	Color
Hex	471106
RGB	71, 17, 6
RGB Percent	28%, 7%, 2%
CMY	0.7230, 0.9347, 0.9746
CMYK	0.00, 0.76, 0.91, 0.72
HSL	10°, 83%, 15%
HSV	10°, 91%, 28%
XYZ	2.8020, 1.7298, 0.3723
YIQ	31.8920, 35.7150, 8.0270

Conversions

Conversions Part 2

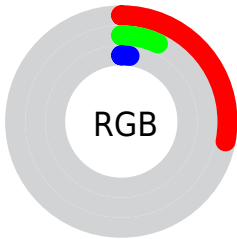
Format	Color
RYB	71, 19, 6
Decimal	4657414
CIELab	14.00, 25.15, 18.81
CIElCh	14, 31.407, 36.798
Yxy	1.7298, 0.5714, 0.3527
Android (android.graphics.Color)	4282847494 (0xFF471106)
YUV	31.8920, -12.7648, 34.2977
Hunter-Lab	13.1521, 15.0129, 7.5281

Details

The CIELCh color **14, 31.407, 36.798** is a dark color, and the websafe version is hex **330000**. A complement of this color would be **23, 16.585, 221.530**, and the grayscale version is **12, 0.003, 296.813**.

A 20% lighter version of the original color is **34, 31.708, 37.431**, and **0, 0.000, 0.000** is the 20% darker color. If you saturate the color by 10%, you get **13, 33.914, 36.526**, and if you desaturate by 10%, it is **15, 28.371, 37.798**.

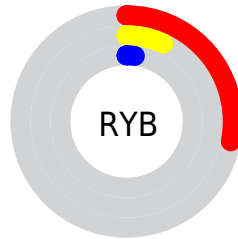
Distribution



Red (28%)

Green (7%)

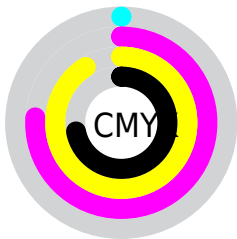
Blue (2%)



Red (28%)

Yellow (7%)

Blue (2%)

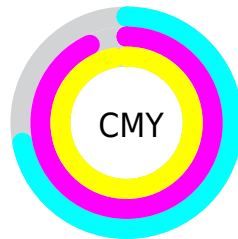


Cyan (0%)

Magenta (76%)

Yellow (91%)

Black (72%)



Cyan (72%)

Magenta (93%)

Yellow (97%)


Brightness & Saturation Gradients

These gradients show how the CIELCh color 14, 31.407, 36.798 changes by changing the brightness by 10 percent. The first figure shows a shift by +10% for each color and the second figure -10%.

Similar to the brightness gradients but the following saturation gradients show a change of the CIELCh color 14, 31.407, 36.798 by changing the saturation by 10% instead.

 14, 31.407, 36.798

 14, 31.407, 36.798

 100, 31.407,
36.798

 4, 31.407, 36.798

 34, 31.407, 36.798

 0, 31.407, 36.798

 44, 31.407, 36.798

 54, 31.407, 36.798

 64, 31.407, 36.798

 74, 31.407, 36.798

 84, 31.407, 36.798

 94, 31.407, 36.798

■ 14, 31.407, 36.798

■ 14, 31.407, 36.798

■ 13, 33.914, 36.526

■ 15, 28.371, 37.798

■ 17, 24.606, 37.738

■ 18, 20.482, 36.745

■ 20, 16.537, 35.985

■ 22, 12.811, 35.437

■ 24, 9.321, 35.067

■ 26, 6.066, 34.836

■ 28, 3.038, 34.695

■ 30, 0.222, 33.594

Harmonies

Complementary

The Complementary color scheme is a pair of colors which are on the opposite of each other on the color wheel.



14, 31.407, 36.798



23, 16.585, 221.530

Rectangle

The Rectangle color scheme consists of four colors that form a rectangle on the color wheel.



14, 31.407, 36.798



14, 31.407, 86.798



14, 31.407, 216.798



14, 31.407, 266.798

Sweetspot

The Sweet Spot groups the original color and five complimentary colors.



14, 31.406, 36.801



32, 10.045, 34.991



14, 38.941, 333.934



14, 6.702, 35.026



71, 0.009, 296.813



19, 0.004, 296.813

Same Dimension

The Same Dimension uses a secret algorithm to generate beautiful new colors.



14, 31.406, 36.801



18, 43.705, 39.657



22, 28.791, 78.058



13, 1.565, 34.663



20, 47.079, 40.380



49, 92.695, 42.094

Inverse Universe

The Inverse Universe completely reimagines the original color for something new.



23, 16.585, 221.530



30, 20.671, 224.202



12, 30.219, 288.823



13, 1.492, 214.947



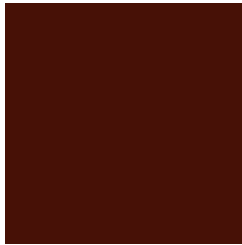
32, 21.852, 224.530



71, 39.869, 226.945

Previews

White Background



This preview shows how the CIELCh color 14, 31.407, 36.798 looks on a white background.

Color Contrast Check

Large Text (above 18pt) WCAG AA ✓ Pass

Any Text WCAG AA ✓ Pass

Large Text (above 18pt) WCAG AAA ✓ Pass

Any Text WCAG AAA ✓ Pass

Black Background



This preview shows how the CIELCh color 14, 31.407, 36.798 looks on a black background.

Color Contrast Check

Large Text (above 18pt) WCAG AA × Fail

Any Text WCAG AA × Fail

Large Text (above 18pt) WCAG AAA × Fail

Any Text WCAG AAA × Fail

If you want to check with other color combinations, try the [Color Contrast Checker](#).

CIELCh 14, 31.407, 36.798

Background



This preview shows how black text looks on a background with the CIELCh color 14, 31.407, 36.798.

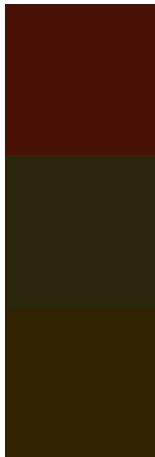


This preview shows how white text looks on a background with the CIELCh color 14, 31.407, 36.798.

Color Blindness Simulation

Color vision deficiency is a very complex topic, and I could not describe the different causes any better than Wikipedia does, so if you want to learn more, you should check out their [article about color blindness](#).

Dichromacy



Original Color

14, 31.606, 37.415

Protanopia

15, 17.058, 98.128

Deuteranopia

15, 21.904, 86.587



Tritanopia
14, 29.911, 29.321

Trichromacy



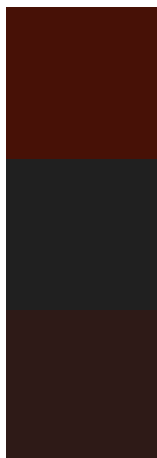
Original Color
14, 31.606, 37.415

Protanomaly
14, 18.413, 62.645

Deuteranomaly
14, 22.751, 61.890

Tritanomaly
14, 30.523, 31.918

Monochromacy



Original Color
14, 31.606, 37.415

Achromatopsia
12, 0.003, 296.813

Achromatomaly
12, 11.377, 33.278

CSS Examples

Text

The CSS property to change the color of the text to CIELCh 14, 31.407, 36.798 is called "color". The color property can be set on classes, ids or directly on the HTML element.

This example shows how text in the color `rgb(71, 17, 6)` looks like.

```
.text, #text, p{  
    color:rgb(71, 17, 6)  
}
```

If you want to add a text shadow in that color use the text-shadow property, you can generate a text shadow directly with our [CSS Text Shadow Generator](#).

Here you see how black text with a 4 pixel rgb(71, 17, 6) colored shadow looks like.

```
.shadow{ text-shadow: 4px 4px 2px rgb(71, 17, 6) }
```

Border

The CSS property to change the border of an element to CIELCh 14, 31.407, 36.798 is called "border". The border property can be set on classes, ids or directly on the HTML element.

This example shows the color as border, it can be applied via the CSS property "border" or "border-color".

```
.border, #border, table{ border:4px solid rgb(71, 17, 6) }
```

If only the border color should be changed use the property `border-color`.

```
.border{ border-color:rgb(71, 17, 6) }
```

If you want to add a box shadow in that color use:

Here you see how a box with a 4 pixel `rgb(71, 17, 6)` colored shadow looks like.

```
.boxshadow{ -moz-box-shadow:4px 4px 4px  
4px rgb(71, 17, 6); -webkit-box-shadow:4px  
4px 4px 4px rgb(71, 17, 6); box-shadow:4px  
4px 4px 4px rgb(71, 17, 6) }
```

Background

The CSS property to change the background color of an element to CIELCh 14, 31.407, 36.798 is called "background". The background property can be set on classes, ids or directly on the HTML element.

```
.background, #background, body{  
background: rgb(71, 17, 6) }
```

If only the background color should be changed can be used:

```
.background{ background-color: rgb(71, 17,  
6) }
```

This example shows the color as background, it is applied via the CSS property "background".

To optimize and compress your CSS code, you can use our [online CSS compressor and optimizer](#) based on csstidy. If you want to create a linear or radial gradient as background or border, check our [CSS Gradient Generator](#).

Hey! You found this booklet interesting? Support Converting Colors with the new Membership Option!

The pro membership hides all ads, plus gives you double the colors in the color bucket, and more awesome pro features!

[Learn more, Memberships starting at \\$2.50/m!](#)

**Follow me
on Twitter!**

@ConvertingColor