

Converting Colors

CIELCh(15, 20.942, 25.273)

Have a look what the booklet for
CIELCh(15, 20.942, 25.273) contains.

CIELCh(15, 21.029, 25.701)	3
<i>Conversions</i>	4
<i>Details</i>	6
<i>Harmonies</i>	11
<i>Previews</i>	20
<i>Color Blindness Simulation</i>	23
<i>CSS Examples</i>	26

Color

CIELCh(15, 21.029, 25.701)

Conversions

Conversions Part 1

Format	Color
Hex	411A1A
RGB	65, 26, 26
RGB Percent	25%, 10%, 10%
CMY	0.7466, 0.8993, 0.8992
CMYK	0.00, 0.60, 0.60, 0.75
HSL	360°, 43%, 18%
HSV	360°, 60%, 25%
XYZ	2.7004, 1.9086, 1.1856
YIQ	37.6610, 23.2440, 8.2680

Conversions

Conversions Part 2

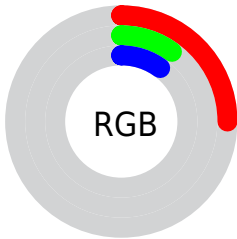
Format	Color
RYB	65, 26, 26
Decimal	4266522
CIELab	15.00, 18.95, 9.12
CIELCh	15, 21.029, 25.701
Yxy	1.9086, 0.4660, 0.3294
Android (android.graphics.Color)	4282456602 (0xFF411A1A)
YUV	37.6610, -5.7489, 23.9763
Hunter-Lab	13.8151, 10.7144, 4.5826

Details

The CIELCh color **15, 21.029, 25.701** is a dark color, and the websafe version is hex **330000**. A complement of this color would be **25, 14.261, 197.025**, and the grayscale version is **15, 0.003, 296.813**.

A 20% lighter version of the original color is **35, 20.703, 26.091**, and **0, 0.000, 0.000** is the 20% darker color. If you saturate the color by 10%, you get **13, 24.942, 27.627**, and if you desaturate by 10%, it is **17, 17.102, 23.951**.

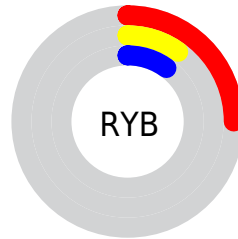
Distribution



Red (25%)

Green (10%)

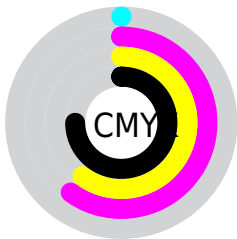
Blue (10%)



Red (25%)

Yellow (10%)

Blue (10%)

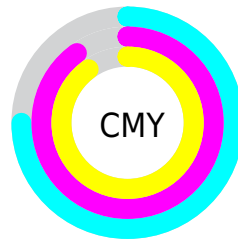


Cyan (0%)

Magenta (60%)

Yellow (60%)

Black (75%)



Cyan (75%)

Magenta (90%)

Yellow (90%)

Brightness & Saturation Gradients

These gradients show how the CIELCh color 15, 21.029, 25.701 changes by changing the brightness by 10 percent. The first figure shows a shift by +10% for each color and the second figure -10%.

Similar to the brightness gradients but the following saturation gradients show a change of the CIELCh color 15, 21.029, 25.701 by changing the saturation by 10% instead.

15, 21.029, 25.701

15, 21.029, 25.701

100, 21.029,
25.701

5, 21.029, 25.701

35, 21.029, 25.701

0, 21.029, 25.701

45, 21.029, 25.701

55, 21.029, 25.701

65, 21.029, 25.701

75, 21.029, 25.701

85, 21.029, 25.701

95, 21.029, 25.701

■ 15, 21.029, 25.701

■ 15, 21.029, 25.701

■ 13, 24.942, 27.627

■ 17, 17.102, 23.951

■ 12, 28.274, 28.241

■ 19, 13.304, 22.561

■ 11, 30.997, 28.088

■ 21, 9.684, 21.461

■ 10, 33.765, 27.490

■ 23, 6.269, 20.581

■ 25, 3.069, 19.851

■ 27, 0.079, 16.252

■ 30, 2.712, 199.024

■ 32, 5.320, 198.615

■ 34, 7.763, 198.302

Harmonies

Complementary

The Complementary color scheme is a pair of colors which are on the opposite of each other on the color wheel.



15, 21.029, 25.701



25, 14.261, 197.025

Rectangle

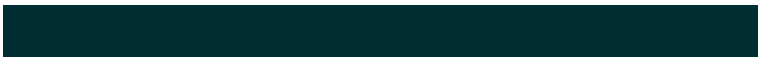
The Rectangle color scheme consists of four colors that form a rectangle on the color wheel.



15, 21.029, 25.701



15, 21.029, 75.701



15, 21.029, 205.701



15, 21.029, 255.701

Sweetspot

The Sweet Spot groups the original color and five complimentary colors.



15, 21.028, 25.704



31, 6.899, 20.465



16, 30.086, 326.654



14, 4.860, 20.578



70, 0.009, 296.813



18, 0.003, 296.813

Same Dimension

The Same Dimension uses a secret algorithm to generate beautiful new colors.



15, 21.028, 25.704



18, 32.137, 29.120



20, 17.129, 67.144



12, 1.688, 19.731



18, 48.283, 35.239



47, 94.923, 39.982

Inverse Universe

The Inverse Universe completely reimagines the original color for something new.



15, 21.028, 25.704



18, 32.137, 29.120



18, 14.433, 263.832



12, 1.688, 19.731



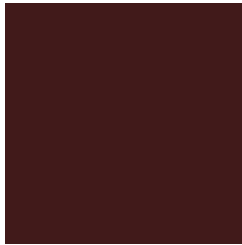
18, 48.283, 35.239



47, 94.923, 39.982

Previews

White Background



This preview shows how the CIE LCh color 15, 21.029, 25.701 looks on a white background.

Color Contrast Check

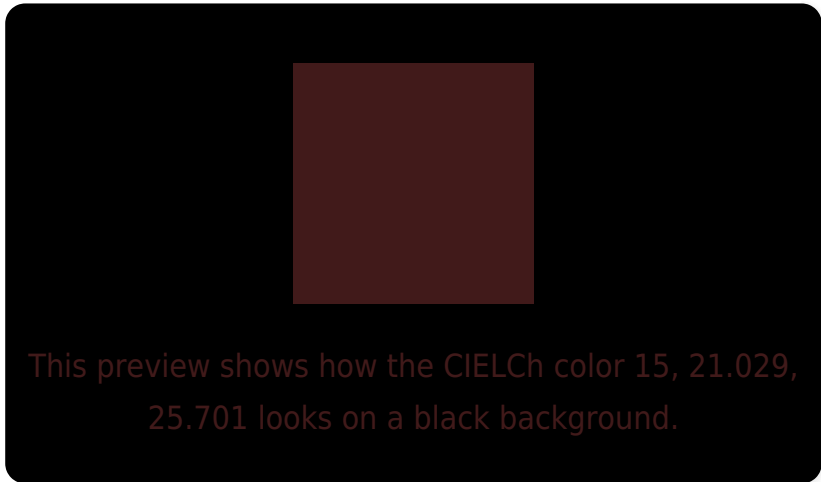
Large Text (above 18pt) WCAG AA ✓ Pass

Any Text WCAG AA ✓ Pass

Large Text (above 18pt) WCAG AAA ✓ Pass

Any Text WCAG AAA ✓ Pass

Black Background



Color Contrast Check

Large Text (above 18pt) WCAG AA × Fail

Any Text WCAG AA × Fail

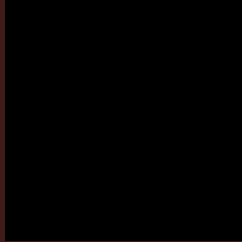
Large Text (above 18pt) WCAG AAA × Fail

Any Text WCAG AAA × Fail

If you want to check with other color combinations, try the [Color Contrast Checker](#).

CIELCh 15, 21.029, 25.701

Background



This preview shows how black text looks on a background with the CIELCh color 15, 21.029, 25.701.



This preview shows how white text looks on a background with the CIELCh color 15, 21.029, 25.701.

Color Blindness Simulation

Color vision deficiency is a very complex topic, and I could not describe the different causes any better than Wikipedia does, so if you want to learn more, you should check out their [article about color blindness](#).

Dichromacy



Original Color

15, 21.029, 25.701

Protanopia

16, 5.684, 98.168

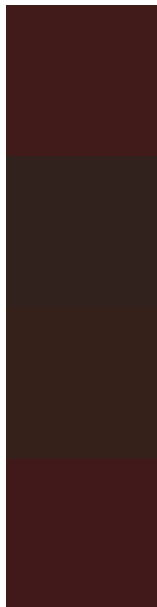
Deuteranopia

15, 10.711, 76.846



Tritanopia
15, 21.271, 22.435

Trichromacy



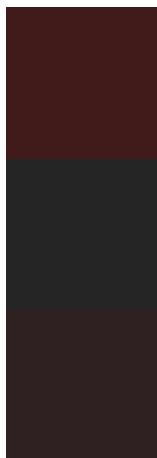
Original Color
15, 21.029, 25.701

Protanomaly
15, 9.356, 43.094

Deuteranomaly
15, 12.588, 47.778

Tritanomaly
15, 21.271, 22.435

Monochromacy



Original Color
15, 21.029, 25.701

Achromatopsia
15, 0.003, 296.813

Achromatomaly
14, 7.234, 21.278

CSS Examples

Text

The CSS property to change the color of the text to CIELCh 15, 21.029, 25.701 is called "color". The color property can be set on classes, ids or directly on the HTML element.

This example shows how text in the color `rgb(65, 26, 26)` looks like.

```
.text, #text, p{  
    color:rgb(65, 26, 26)  
}
```

If you want to add a text shadow in that color use the text-shadow property, you can generate a text shadow directly with our [CSS Text Shadow Generator](#).

Here you see how black text with a 4 pixel rgb(65, 26, 26) colored shadow looks like.

```
.shadow{ text-shadow: 4px 4px 2px rgb(65, 26, 26) }
```

Border

The CSS property to change the border of an element to CIELCh 15, 21.029, 25.701 is called "border". The border property can be set on classes, ids or directly on the HTML element.

This example shows the color as border, it can be applied via the CSS property "border" or "border-color".

```
.border, #border, table{ border:4px solid rgb(65, 26, 26) }
```

If only the border color should be changed use the property `border-color`.

```
.border{ border-color:rgb(65, 26, 26) }
```

If you want to add a box shadow in that color use:

Here you see how a box with a 4 pixel `rgb(65, 26, 26)` colored shadow looks like.

```
.boxshadow{ -moz-box-shadow:4px 4px 4px  
4px rgb(65, 26, 26); -webkit-box-  
shadow:4px 4px 4px 4px rgb(65, 26, 26);  
box-shadow:4px 4px 4px 4px rgb(65, 26, 26)  
}
```

Background

The CSS property to change the background color of an element to CIELCh 15, 21.029, 25.701 is called "background". The background property can be set on classes, ids or directly on the HTML element.

```
.background, #background, body{  
background: rgb(65, 26, 26) }
```

If only the background color should be changed can be used:

```
.background{ background-color: rgb(65, 26,  
26) }
```

This example shows the color as background, it is applied via the CSS property "background".

To optimize and compress your CSS code, you can use our [online CSS compressor and optimizer](#) based on csstidy. If you want to create a linear or radial gradient as background or border, check our [CSS Gradient Generator](#).

Hey! You found this booklet interesting? Support Converting Colors with the new Membership Option!

The pro membership hides all ads, plus gives you double the colors in the color bucket, and more awesome pro features!

[Learn more, Memberships starting at \\$2.50/m!](#)

**Follow me
on Twitter!**

@ConvertingColor