

# Converting Colors

CIELCh(15, 21.222, 23.482)

Have a look what the booklet for  
CIELCh(15, 21.222, 23.482) contains.

<b>CIELCh(15, 21.271, 22.435)</b> .....	3
<i><b>Conversions</b></i> .....	4
<i><b>Details</b></i> .....	6
<i><b>Harmonies</b></i> .....	11
<i><b>Previews</b></i> .....	20
<i><b>Color Blindness Simulation</b></i> .....	23
<i><b>CSS Examples</b></i> .....	26

**Color**

**CIELCh(15, 21.271, 22.435)**

# Conversions

## Conversions Part 1

Format	Color
Hex	41191B
RGB	65, 25, 27
RGB Percent	25%, 10%, 11%
CMY	0.7446, 0.9015, 0.8937
CMYK	0.00, 0.61, 0.58, 0.74
HSL	357°, 44%, 18%
HSV	357°, 61%, 26%
XYZ	2.7384, 1.9086, 1.2678
YIQ	37.1880, 23.1980, 9.1020

# Conversions

## Conversions Part 2

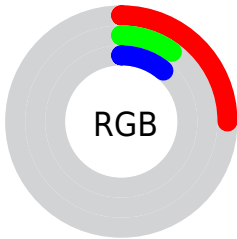
Format	Color
<a href="#">RYB</a>	<a href="#">65, 25, 27</a>
Decimal	<a href="#">4266267</a>
CIELab	<a href="#">15.00, 19.66, 8.12</a>
CIELCh	<a href="#">15, 21.271, 22.435</a>
Yxy	<a href="#">1.9086, 0.4630, 0.3227</a>
Android (android.graphics.Color)	<a href="#">4282456347 (0xFF41191B)</a>
YUV	<a href="#">37.1880, -5.0227, 24.3911</a>
Hunter-Lab	<a href="#">13.8151, 11.2055, 4.2297</a>

# Details

The CIELCh color **15, 21.271, 22.435** is a dark color, and the websafe version is hex **330000**. A complement of this color would be **25, 14.858, 191.854**, and the grayscale version is **15, 0.003, 296.813**.

A 20% lighter version of the original color is **35, 20.977, 22.876**, and **0, 0.000, 0.000** is the 20% darker color. If you saturate the color by 10%, you get **13, 25.078, 24.727**, and if you desaturate by 10%, it is **17, 17.447, 20.542**.

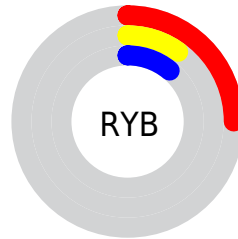
# Distribution



Red (25%)

Green (10%)

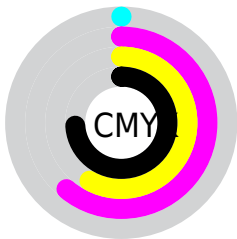
Blue (11%)



Red (25%)

Yellow (10%)

Blue (11%)

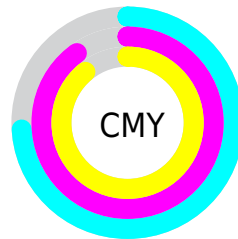


Cyan (0%)

Magenta (61%)

Yellow (58%)

Black (74%)



Cyan (74%)

Magenta (90%)

Yellow (89%)

# Brightness & Saturation Gradients

These gradients show how the CIELCh color 15, 21.271, 22.435 changes by changing the brightness by 10 percent. The first figure shows a shift by +10% for each color and the second figure -10%.

Similar to the brightness gradients but the following saturation gradients show a change of the CIELCh color 15, 21.271, 22.435 by changing the saturation by 10% instead.



 15, 21.271, 22.435

 15, 21.271, 22.435

 100, 21.271,  
22.435

 5, 21.271, 22.435

 35, 21.271, 22.435

 0, 21.271, 22.435

 45, 21.271, 22.435

 55, 21.271, 22.435

 65, 21.271, 22.435

 75, 21.271, 22.435

 85, 21.271, 22.435

 95, 21.271, 22.435

■ 15, 21.271, 22.435

■ 15, 21.271, 22.435

■ 13, 25.078, 24.727

■ 17, 17.447, 20.542

■ 12, 28.408, 26.062

■ 19, 13.706, 19.022

■ 11, 31.153, 26.247

■ 21, 10.107, 17.798

■ 10, 33.579, 25.709

■ 23, 6.684, 16.800

■ 25, 3.454, 15.960

■ 27, 0.420, 14.779

■ 30, 2.427, 194.911

■ 32, 5.099, 194.387

■ 34, 7.609, 193.969

# Harmonies

# Complementary

The Complementary color scheme is a pair of colors which are on the opposite of each other on the color wheel.



15, 21.271, 22.435



25, 14.858, 191.854

# Rectangle

The Rectangle color scheme consists of four colors that form a rectangle on the color wheel.



15, 21.271, 22.435



15, 21.271, 72.435



15, 21.271, 202.435



15, 21.271, 252.435

# Sweetspot

The Sweet Spot groups the original color and five complimentary colors.



15, 21.270, 22.438



31, 6.889, 16.562



16, 30.618, 325.679



14, 4.851, 16.690



70, 0.009, 296.813



18, 0.003, 296.813



# Same Dimension

The Same Dimension uses a secret algorithm to generate beautiful new colors.



15, 21.270, 22.438



18, 32.328, 26.347



20, 17.539, 63.696



12, 1.690, 15.730



18, 47.327, 33.285



47, 92.967, 38.436





# Inverse Universe

The Inverse Universe completely reimagines the original color for something new.



15, 21.270, 22.438



18, 32.328, 26.347



19, 14.198, 260.149



12, 1.690, 15.730



18, 47.327, 33.285

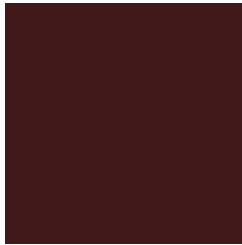


47, 92.967, 38.436



# Previews

## White Background



This preview shows how the CIE LCh color 15, 21.271, 22.435 looks on a white background.

## Color Contrast Check

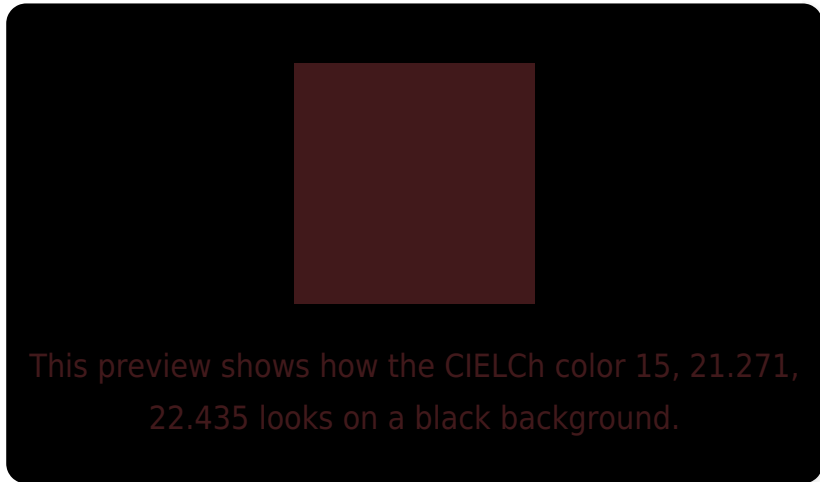
Large Text (above 18pt) WCAG AA ✓ Pass

Any Text WCAG AA ✓ Pass

Large Text (above 18pt) WCAG AAA ✓ Pass

Any Text WCAG AAA ✓ Pass

# Black Background



## Color Contrast Check

Large Text (above 18pt) WCAG AA × Fail

Any Text WCAG AA × Fail

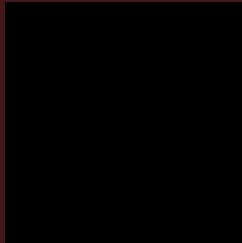
Large Text (above 18pt) WCAG AAA × Fail

Any Text WCAG AAA × Fail

If you want to check with other color combinations, try the [Color Contrast Checker](#).

# CIELCh 15, 21.271, 22.435

## Background



This preview shows how black text looks on a background with the CIELCh color 15, 21.271, 22.435.



This preview shows how white text looks on a background with the CIELCh color 15, 21.271, 22.435.

# Color Blindness Simulation

Color vision deficiency is a very complex topic, and I could not describe the different causes any better than Wikipedia does, so if you want to learn more, you should check out their [article about color blindness](#).

## Dichromacy



### Original Color

15, 21.271, 22.435

### Protanopia

16, 4.316, 95.375

### Deuteranopia

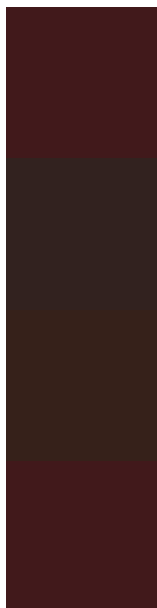
15, 10.103, 75.176



**Tritanopia**  
15, 21.271, 22.435



# Trichromacy



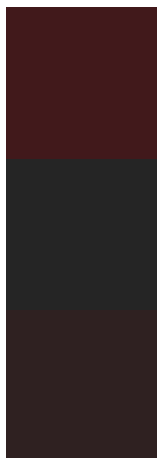
**Original Color**  
15, 21.271, 22.435

**Protanomaly**  
15, 8.758, 35.172

**Deuteranomaly**  
15, 12.709, 44.276

**Tritanomaly**  
15, 21.271, 22.435

# Monochromacy



**Original Color**  
15, 21.271, 22.435

**Achromatopsia**  
15, 0.003, 296.813

**Achromatomaly**  
14, 7.234, 21.278

# CSS Examples

## Text

The CSS property to change the color of the text to CIELCh 15, 21.271, 22.435 is called "color". The color property can be set on classes, ids or directly on the HTML element.

This example shows how text in the color `rgb(65, 25, 27)` looks like.

```
.text, #text, p{  
    color:rgb(65, 25, 27)  
}
```

If you want to add a text shadow in that color use the text-shadow property, you can generate a text shadow directly with our [CSS Text Shadow Generator](#).

Here you see how black text with a 4 pixel rgb(65, 25, 27) colored shadow looks like.

```
.shadow{ text-shadow: 4px 4px 2px rgb(65, 25, 27) }
```

## Border

The CSS property to change the border of an element to CIELCh 15, 21.271, 22.435 is called "border". The border property can be set on classes, ids or directly on the HTML element.

This example shows the color as border, it can be applied via the CSS property "border" or "border-color".

```
.border, #border, table{ border:4px solid rgb(65, 25, 27) }
```

If only the border color should be changed use the property `border-color`.

```
.border{ border-color:rgb(65, 25, 27) }
```

If you want to add a box shadow in that color use:

Here you see how a box with a 4 pixel `rgb(65, 25, 27)` colored shadow looks like.

```
.boxshadow{ -moz-box-shadow:4px 4px 4px  
4px rgb(65, 25, 27); -webkit-box-  
shadow:4px 4px 4px 4px rgb(65, 25, 27);  
box-shadow:4px 4px 4px 4px rgb(65, 25, 27)  
}
```

# Background

The CSS property to change the background color of an element to CIELCh 15, 21.271, 22.435 is called "background". The background property can be set on classes, ids or directly on the HTML element.

```
.background, #background, body{  
background: rgb(65, 25, 27) }
```

If only the background color should be changed can be used:

```
.background{ background-color: rgb(65, 25,  
27) }
```

This example shows the color as background, it is applied via the CSS property "background".

To optimize and compress your CSS code, you can use our [online CSS compressor and optimizer](#) based on csstidy. If you want to create a linear or radial gradient as background or border, check our [CSS Gradient Generator](#).

# Hey! You found this booklet interesting? Support Converting Colors with the new Membership Option!

The pro membership hides all ads, plus gives you double the colors in the color bucket, and more awesome pro features!

**[Learn more, Memberships starting at \\$2.50/m!](#)**

**Follow me  
on Twitter!**

@ConvertingColor