

Converting Colors

CIELCh(16, 13.381, 19.292)

Have a look what the booklet for
CIELCh(16, 13.381, 19.292) contains.

CIELCh(16, 12.985, 19.859)	3
<i>Conversions</i>	4
<i>Details</i>	6
<i>Harmonies</i>	11
<i>Previews</i>	20
<i>Color Blindness Simulation</i>	23
<i>CSS Examples</i>	26

Color

CIELCh(16, 12.985, 19.859)

Conversions

Conversions Part 1

Format	Color
Hex	3A2122
RGB	58, 33, 34
RGB Percent	23%, 13%, 13%
CMY	0.7727, 0.8707, 0.8668
CMYK	0.00, 0.43, 0.41, 0.77
HSL	358°, 27%, 18%
HSV	358°, 43%, 23%
XYZ	2.5737, 2.0993, 1.7802
YIQ	40.5890, 14.5790, 5.6110

Conversions

Conversions Part 2

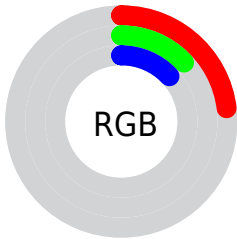
Format	Color
R_{YB}	58, 33, 34
Decimal	3809570
CIE _{Lab}	16.00, 12.21, 4.41
CIE _{LCh}	16, 12.985, 19.859
Yxy	2.0993, 0.3988, 0.3253
Android (android.graphics.Color)	4281999650 (0xFF3A2122)
YUV	40.5890, -3.2484, 15.2694
Hunter-Lab	14.4890, 6.3510, 2.8576

Details

The CIELCh color **16, 12.985, 19.859** is a dark color, and the websafe version is hex **333333**. A complement of this color would be **22, 10.216, 193.808**, and the grayscale version is **16, 0.003, 296.813**.

A 20% lighter version of the original color is **36, 12.658, 21.322**, and **0, 0.000, 0.000** is the 20% darker color. If you saturate the color by 10%, you get **14, 16.401, 21.357**, and if you desaturate by 10%, it is **18, 9.695, 18.658**.

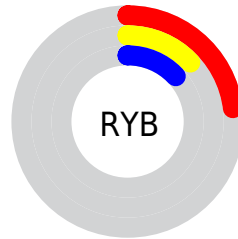
Distribution



Red (23%)

Green (13%)

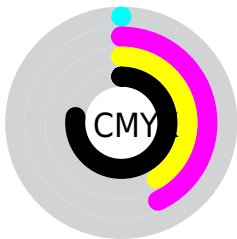
Blue (13%)



Red (23%)

Yellow (13%)

Blue (13%)

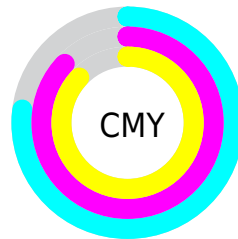


Cyan (0%)

Magenta (43%)

Yellow (41%)

Black (77%)



Cyan (77%)

Magenta (87%)

Yellow (87%)

Brightness & Saturation Gradients

These gradients show how the CIELCh color 16, 12.985, 19.859 changes by changing the brightness by 10 percent. The first figure shows a shift by +10% for each color and the second figure -10%.

Similar to the brightness gradients but the following saturation gradients show a change of the CIELCh color 16, 12.985, 19.859 by changing the saturation by 10% instead.

■ 16, 12.985, 19.859

■ 16, 12.985, 19.859

■ 100, 12.985,
19.859

■ 6, 12.985, 19.859

■ 36, 12.985, 19.859

■ 0, 12.985, 19.859

■ 46, 12.985, 19.859

■ 56, 12.985, 19.859

■ 66, 12.985, 19.859

■ 76, 12.985, 19.859

■ 86, 12.985, 19.859

■ 96, 12.985, 19.859

16, 12.985, 19.859

16, 12.985, 19.859

14, 16.401, 21.357

18, 9.695, 18.658

13, 19.894, 23.216

20, 6.566, 17.677

11, 23.195, 24.483

22, 3.611, 16.857

10, 25.972, 24.677

24, 0.833, 15.993

9, 28.544, 23.914

26, 1.774, 195.853

8, 30.466, 23.085

28, 4.221, 195.320

30, 6.521, 194.912

32, 8.688, 194.568

34, 10.735,
194.273

Harmonies

Complementary

The Complementary color scheme is a pair of colors which are on the opposite of each other on the color wheel.



16, 12.985, 19.859



22, 10.216, 193.808

Rectangle

The Rectangle color scheme consists of four colors that form a rectangle on the color wheel.



16, 12.985, 19.859



16, 12.985, 69.859



16, 12.985, 199.859



16, 12.985, 249.859

Sweetspot

The Sweet Spot groups the original color and five complimentary colors.



16, 12.984, 19.863



29, 4.517, 16.897



17, 20.028, 324.964



13, 3.111, 16.966



68, 0.008, 296.813



15, 0.003, 296.813

Same Dimension

The Same Dimension uses a secret algorithm to generate beautiful new colors.



16, 12.984, 19.863



20, 20.307, 21.603



19, 10.661, 65.580



9, 1.460, 16.487



17, 45.344, 32.875



46, 91.689, 38.700

Inverse Universe

The Inverse Universe completely reimagines the original color for something new.



16, 12.984, 19.863



20, 20.307, 21.603



19, 9.279, 255.778



9, 1.460, 16.487



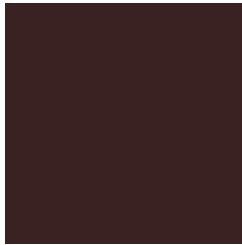
17, 45.344, 32.875



46, 91.689, 38.700

Previews

White Background



This preview shows how the CIELCh color 16, 12.985, 19.859 looks on a white background.

Color Contrast Check

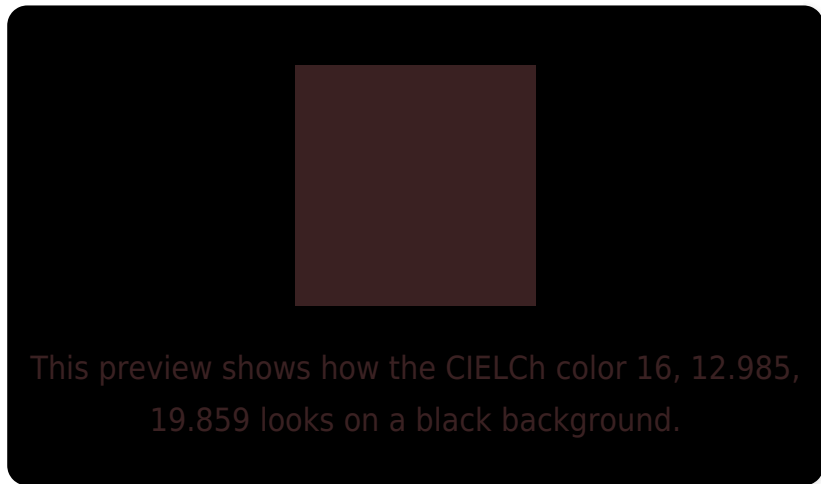
Large Text (above 18pt) WCAG AA ✓ Pass

Any Text WCAG AA ✓ Pass

Large Text (above 18pt) WCAG AAA ✓ Pass

Any Text WCAG AAA ✓ Pass

Black Background



Color Contrast Check

Large Text (above 18pt) WCAG AA × Fail

Any Text WCAG AA × Fail

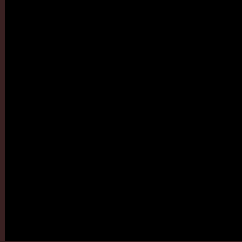
Large Text (above 18pt) WCAG AAA × Fail

Any Text WCAG AAA × Fail

If you want to check with other color combinations, try the [Color Contrast Checker](#).

CIELCh 16, 12.985, 19.859

Background



This preview shows how black text looks on a background with the CIELCh color 16, 12.985, 19.859.

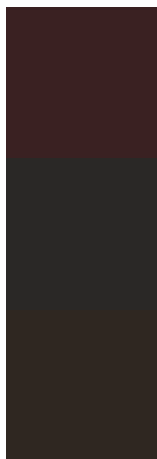


This preview shows how white text looks on a background with the CIELCh color 16, 12.985, 19.859.

Color Blindness Simulation

Color vision deficiency is a very complex topic, and I could not describe the different causes any better than Wikipedia does, so if you want to learn more, you should check out their [article about color blindness](#).

Dichromacy



Original Color

16, 12.985, 19.859

Protanopia

16, 1.701, 74.423

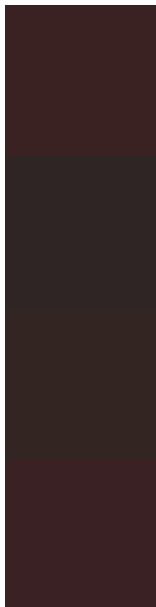
Deuteranopia

16, 5.916, 64.623



Tritanopia
16, 12.922, 16.827

Trichromacy



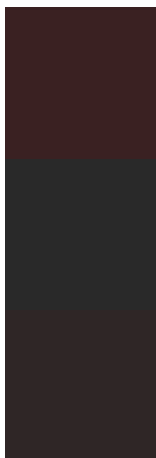
Original Color
16, 12.985, 19.859

Protanomaly
16, 5.545, 20.729

Deuteranomaly
16, 7.879, 41.480

Tritanomaly
16, 12.922, 16.827

Monochromacy



Original Color
16, 12.985, 19.859

Achromatopsia
17, 0.003, 296.813

Achromatomaly
16, 4.495, 20.445

CSS Examples

Text

The CSS property to change the color of the text to CIELCh 16, 12.985, 19.859 is called "color". The color property can be set on classes, ids or directly on the HTML element.

This example shows how text in the color `rgb(58, 33, 34)` looks like.

```
.text, #text, p{  
    color:rgb(58, 33, 34)  
}
```

If you want to add a text shadow in that color use the text-shadow property, you can generate a text shadow directly with our [CSS Text Shadow Generator](#).

Here you see how black text with a 4 pixel rgb(58, 33, 34) colored shadow looks like.

```
.shadow{ text-shadow: 4px 4px 2px rgb(58, 33, 34) }
```

Border

The CSS property to change the border of an element to CIELCh 16, 12.985, 19.859 is called "border". The border property can be set on classes, ids or directly on the HTML element.

This example shows the color as border, it can be applied via the CSS property "border" or "border-color".

```
.border, #border, table{ border:4px solid rgb(58, 33, 34) }
```

If only the border color should be changed use the property `border-color`.

```
.border{ border-color:rgb(58, 33, 34) }
```

If you want to add a box shadow in that color use:

Here you see how a box with a 4 pixel `rgb(58, 33, 34)` colored shadow looks like.

```
.boxshadow{ -moz-box-shadow:4px 4px 4px  
4px rgb(58, 33, 34); -webkit-box-  
shadow:4px 4px 4px 4px rgb(58, 33, 34);  
box-shadow:4px 4px 4px 4px rgb(58, 33, 34)  
}
```

Background

The CSS property to change the background color of an element to CIELCh 16, 12.985, 19.859 is called "background". The background property can be set on classes, ids or directly on the HTML element.

```
.background, #background, body{  
background: rgb(58, 33, 34) }
```

If only the background color should be changed can be used:

```
.background{ background-color: rgb(58, 33,  
34) }
```

This example shows the color as background, it is applied via the CSS property "background".

To optimize and compress your CSS code, you can use our [online CSS compressor and optimizer](#) based on csstidy. If you want to create a linear or radial gradient as background or border, check our [CSS Gradient Generator](#).

Hey! You found this booklet interesting? Support Converting Colors with the new Membership Option!

The pro membership hides all ads, plus gives you double the colors in the color bucket, and more awesome pro features!

[Learn more, Memberships starting at \\$2.50/m!](#)

**Follow me
on Twitter!**

@ConvertingColor