

Converting Colors

CIELCh(16, 14.363, 47.289)

Have a look what the booklet for
CIELCh(16, 14.363, 47.289) contains.

CIELCh(16, 14.441, 47.280)	3
<i>Conversions</i>	4
<i>Details</i>	6
<i>Harmonies</i>	11
<i>Previews</i>	20
<i>Color Blindness Simulation</i>	23
<i>CSS Examples</i>	26

Color

CIELCh(16, 14.441, 47.280)

Conversions

Conversions Part 1

Format	Color
Hex	392219
RGB	57, 34, 25
RGB Percent	22%, 13%, 10%
CMY	0.7758, 0.8660, 0.9014
CMYK	0.00, 0.40, 0.56, 0.78
HSL	17°, 39%, 16%
HSV	17°, 56%, 22%
XYZ	2.4514, 2.0993, 1.2045
YIQ	39.8510, 16.5970, 2.0770

Conversions

Conversions Part 2

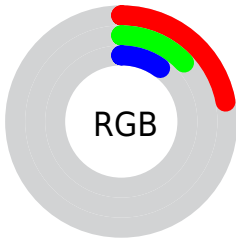
Format	Color
R_{YB}	57, 38, 25
Decimal	3744281
CIE _{Lab}	16.00, 9.80, 10.61
CIE _{LCh}	16, 14.441, 47.280
Yxy	2.0993, 0.4259, 0.3648
Android (android.graphics.Color)	4281934361 (0xFF392219)
YUV	39.8510, -7.3215, 15.0397
Hunter-Lab	14.4890, 4.8450, 5.2136

Details

The CIELCh color **16, 14.441, 47.280** is a dark color, and the websafe version is hex **333333**. A complement of this color would be **19, 10.439, 234.800**, and the grayscale version is **16, 0.003, 296.813**.

A 20% lighter version of the original color is **36, 14.691, 45.694**, and **0, 0.000, 0.000** is the 20% darker color. If you saturate the color by 10%, you get **15, 17.551, 47.130**, and if you desaturate by 10%, it is **17, 11.468, 47.447**.

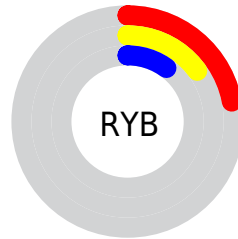
Distribution



Red (22%)

Green (13%)

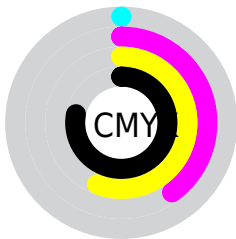
Blue (10%)



Red (22%)

Yellow (15%)

Blue (10%)

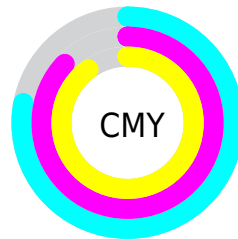


Cyan (0%)

Magenta (40%)

Yellow (56%)

Black (78%)



Cyan (78%)

Magenta (87%)

Yellow (90%)


Brightness & Saturation Gradients

These gradients show how the CIELCh color 16, 14.441, 47.280 changes by changing the brightness by 10 percent. The first figure shows a shift by +10% for each color and the second figure -10%.

Similar to the brightness gradients but the following saturation gradients show a change of the CIELCh color 16, 14.441, 47.280 by changing the saturation by 10% instead.

 16, 14.441, 47.280

 16, 14.441, 47.280

 100, 14.441,
47.280

 6, 14.441, 47.280

 36, 14.441, 47.280

 0, 14.441, 47.280

 46, 14.441, 47.280

 56, 14.441, 47.280

 66, 14.441, 47.280

 76, 14.441, 47.280

 86, 14.441, 47.280

 96, 14.441, 47.280

■ 16, 14.441, 47.280

■ 16, 14.441, 47.280

■ 15, 17.551, 47.130

■ 17, 11.468, 47.447

■ 13, 20.291, 45.743

■ 19, 8.674, 47.703

■ 12, 22.575, 43.386

■ 20, 6.056, 48.037

■ 11, 24.749, 41.499

■ 22, 3.604, 48.425

■ 11, 25.603, 40.956

■ 23, 1.309, 48.785

■ 25, 0.845, 229.704

■ 26, 2.870, 230.056

■ 28, 4.779, 230.575

■ 29, 6.584, 231.122

Harmonies

Complementary

The Complementary color scheme is a pair of colors which are on the opposite of each other on the color wheel.



16, 14.441, 47.280



19, 10.439, 234.800

Rectangle

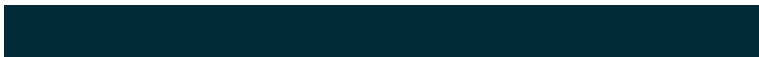
The Rectangle color scheme consists of four colors that form a rectangle on the color wheel.



16, 14.441, 47.280



16, 14.441, 97.280



16, 14.441, 227.280



16, 14.441, 277.280

Sweetspot

The Sweet Spot groups the original color and five complimentary colors.



16, 14.440, 47.285



28, 4.774, 48.353



14, 21.407, 336.495



13, 3.228, 48.336



68, 0.008, 296.813



15, 0.003, 296.813

Same Dimension

The Same Dimension uses a secret algorithm to generate beautiful new colors.



16, 14.440, 47.285



20, 22.411, 47.230



21, 16.802, 92.429



9, 1.196, 48.721



20, 41.614, 45.827



50, 85.562, 46.205

Inverse Universe

The Inverse Universe completely reimagines the original color for something new.



19, 10.439, 234.800



23, 14.650, 237.545



13, 17.696, 286.411



10, 1.151, 229.824



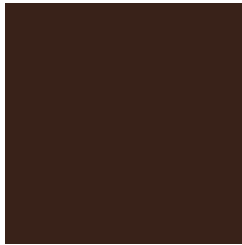
26, 22.011, 248.812



61, 42.677, 253.158

Previews

White Background



This preview shows how the CIELCh color 16, 14.441, 47.280 looks on a white background.

Color Contrast Check

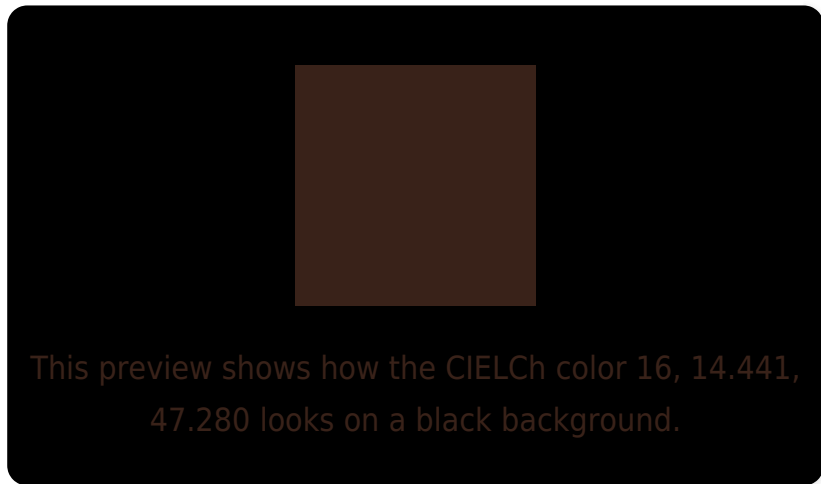
Large Text (above 18pt) WCAG AA ✓ Pass

Any Text WCAG AA ✓ Pass

Large Text (above 18pt) WCAG AAA ✓ Pass

Any Text WCAG AAA ✓ Pass

Black Background



Color Contrast Check

Large Text (above 18pt) WCAG AA × Fail

Any Text WCAG AA × Fail

Large Text (above 18pt) WCAG AAA × Fail

Any Text WCAG AAA × Fail

If you want to check with other color combinations, try the [Color Contrast Checker](#).

CIELCh 16, 14.441, 47.280

Background



This preview shows how black text looks on a background with the CIELCh color 16, 14.441, 47.280.



This preview shows how white text looks on a background with the CIELCh color 16, 14.441, 47.280.

Color Blindness Simulation

Color vision deficiency is a very complex topic, and I could not describe the different causes any better than Wikipedia does, so if you want to learn more, you should check out their [article about color blindness](#).

Dichromacy



Original Color

16, 14.441, 47.280

Protanopia

16, 8.484, 97.134

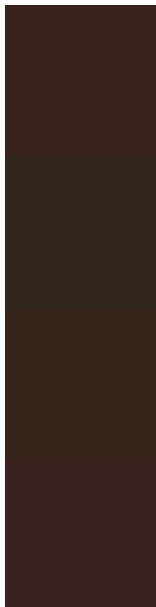
Deuteranopia

16, 11.576, 76.058



Tritanopia
16, 12.922, 16.827

Trichromacy



Original Color
16, 14.441, 47.280

Protanomaly
16, 9.462, 73.342

Deuteranomaly
16, 12.467, 66.134

Tritanomaly
16, 13.407, 28.641

Monochromacy



Original Color
16, 14.441, 47.280

Achromatopsia
16, 0.003, 296.813

Achromatomaly
16, 4.597, 47.183

CSS Examples

Text

The CSS property to change the color of the text to CIELCh 16, 14.441, 47.280 is called "color". The color property can be set on classes, ids or directly on the HTML element.

This example shows how text in the color `rgb(57, 34, 25)` looks like.

```
.text, #text, p{  
    color:rgb(57, 34, 25)  
}
```

If you want to add a text shadow in that color use the text-shadow property, you can generate a text shadow directly with our [CSS Text Shadow Generator](#).

Here you see how black text with a 4 pixel rgb(57, 34, 25) colored shadow looks like.

```
.shadow{ text-shadow: 4px 4px 2px rgb(57, 34, 25) }
```

Border

The CSS property to change the border of an element to CIELCh 16, 14.441, 47.280 is called "border". The border property can be set on classes, ids or directly on the HTML element.

This example shows the color as border, it can be applied via the CSS property "border" or "border-color".

```
.border, #border, table{ border:4px solid rgb(57, 34, 25) }
```

If only the border color should be changed use the property `border-color`.

```
.border{ border-color:rgb(57, 34, 25) }
```

If you want to add a box shadow in that color use:

Here you see how a box with a 4 pixel `rgb(57, 34, 25)` colored shadow looks like.

```
.boxshadow{ -moz-box-shadow:4px 4px 4px  
4px rgb(57, 34, 25); -webkit-box-  
shadow:4px 4px 4px 4px rgb(57, 34, 25);  
box-shadow:4px 4px 4px 4px rgb(57, 34, 25)  
}
```

Background

The CSS property to change the background color of an element to CIELCh 16, 14.441, 47.280 is called "background". The background property can be set on classes, ids or directly on the HTML element.

```
.background, #background, body{  
background: rgb(57, 34, 25) }
```

If only the background color should be changed can be used:

```
.background{ background-color: rgb(57, 34,  
25) }
```

This example shows the color as background, it is applied via the CSS property "background".

To optimize and compress your CSS code, you can use our [online CSS compressor and optimizer](#) based on csstidy. If you want to create a linear or radial gradient as background or border, check our [CSS Gradient Generator](#).

Hey! You found this booklet interesting? Support Converting Colors with the new Membership Option!

The pro membership hides all ads, plus gives you double the colors in the color bucket, and more awesome pro features!

[Learn more, Memberships starting at \\$2.50/m!](#)

**Follow me
on Twitter!**

@ConvertingColor