

Converting Colors

CIELCh(16, 16.519, 21.385)

Have a look what the booklet for
CIELCh(16, 16.519, 21.385) contains.

CIELCh(16, 16.266, 21.527)	3
<i>Conversions</i>	4
<i>Details</i>	6
<i>Harmonies</i>	11
<i>Previews</i>	20
<i>Color Blindness Simulation</i>	23
<i>CSS Examples</i>	26

Color

CIELCh(16, 16.266, 21.527)

Conversions

Conversions Part 1

Format	Color
Hex	3E1F20
RGB	62, 31, 32
RGB Percent	24%, 12%, 13%
CMY	0.7573, 0.8788, 0.8749
CMYK	0.00, 0.50, 0.48, 0.76
HSL	358°, 33%, 18%
HSV	358°, 50%, 24%
XYZ	2.7267, 2.0993, 1.6213
YIQ	40.3830, 18.1550, 6.8830

Conversions

Conversions Part 2

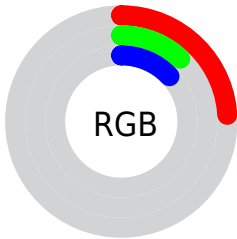
Format	Color
RYB	62, 31, 32
Decimal	4071200
CIELab	16.00, 15.13, 5.97
CIELCh	16, 16.266, 21.527
Yxy	2.0993, 0.4229, 0.3256
Android (android.graphics.Color)	4282261280 (0xFF3E1F20)
YUV	40.3830, -4.1328, 18.9581
Hunter-Lab	14.4890, 8.2361, 3.5078

Details

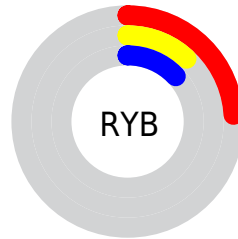
The CIELCh color **16, 16.266, 21.527** is a dark color, and the websafe version is hex **330000**. A complement of this color would be **24, 12.140, 194.182**, and the grayscale version is **16, 0.003, 296.813**.

A 20% lighter version of the original color is **36, 15.991, 21.890**, and **0, 0.000, 0.000** is the 20% darker color. If you saturate the color by 10%, you get **14, 19.962, 23.305**, and if you desaturate by 10%, it is **18, 12.671, 20.110**.

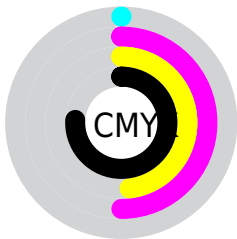
Distribution



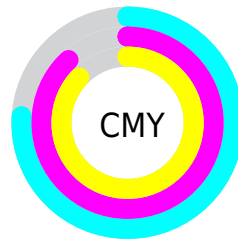
- Red (24%)
- Green (12%)
- Blue (13%)



- Red (24%)
- Yellow (12%)
- Blue (13%)



- Cyan (0%)
- Magenta (50%)
- Yellow (48%)
- Black (76%)



- Cyan (76%)
- Magenta (88%)
- Yellow (87%)


Brightness & Saturation Gradients

These gradients show how the CIELCh color 16, 16.266, 21.527 changes by changing the brightness by 10 percent. The first figure shows a shift by +10% for each color and the second figure -10%.

Similar to the brightness gradients but the following saturation gradients show a change of the CIELCh color 16, 16.266, 21.527 by changing the saturation by 10% instead.

 16, 16.266, 21.527

 16, 16.266, 21.527

 100, 16.266,
21.527

 6, 16.266, 21.527

 36, 16.266, 21.527

 0, 16.266, 21.527

 46, 16.266, 21.527

 56, 16.266, 21.527

 66, 16.266, 21.527

 76, 16.266, 21.527

 86, 16.266, 21.527

 96, 16.266, 21.527

■ 16, 16.266, 21.527

■ 16, 16.266, 21.527

■ 14, 19.962, 23.305

■ 18, 12.671, 20.110

■ 13, 23.646, 25.298

■ 20, 9.229, 18.968

■ 11, 26.841, 26.103

■ 22, 5.968, 18.040

■ 10, 29.499, 25.961

■ 24, 2.898, 17.254

■ 9, 32.270, 25.138

■ 26, 0.019, 4.311

■ 28, 2.679, 196.309

■ 30, 5.208, 195.840

■ 33, 7.583, 195.466

■ 35, 9.820, 195.151

Harmonies

Complementary

The Complementary color scheme is a pair of colors which are on the opposite of each other on the color wheel.



16, 16.266, 21.527



24, 12.140, 194.182

Rectangle

The Rectangle color scheme consists of four colors that form a rectangle on the color wheel.



16, 16.266, 21.527



16, 16.266, 71.527



16, 16.266, 201.527



16, 16.266, 251.527

Sweetspot

The Sweet Spot groups the original color and five complimentary colors.



16, 16.265, 21.530



31, 5.538, 17.685



17, 24.475, 325.756



14, 3.723, 17.743



69, 0.009, 296.813



16, 0.003, 296.813

Same Dimension

The Same Dimension uses a secret algorithm to generate beautiful new colors.



16, 16.265, 21.530



20, 25.237, 23.863



20, 13.365, 66.578



10, 1.575, 17.128



17, 46.572, 33.598



46, 92.805, 38.956

Inverse Universe

The Inverse Universe completely reimagines the original color for something new.



16, 16.265, 21.530



20, 25.237, 23.863



19, 11.471, 259.328



10, 1.575, 17.128



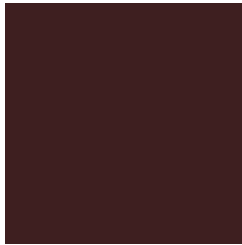
17, 46.572, 33.598



46, 92.805, 38.956

Previews

White Background



This preview shows how the CIELCh color 16, 16.266, 21.527 looks on a white background.

Color Contrast Check

Large Text (above 18pt) WCAG AA ✓ Pass

Any Text WCAG AA ✓ Pass

Large Text (above 18pt) WCAG AAA ✓ Pass

Any Text WCAG AAA ✓ Pass

Black Background



This preview shows how the CIE LCh color 16, 16.266, 21.527 looks on a black background.

Color Contrast Check

Large Text (above 18pt) WCAG AA × Fail

Any Text WCAG AA × Fail

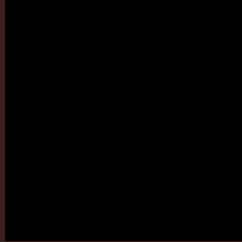
Large Text (above 18pt) WCAG AAA × Fail

Any Text WCAG AAA × Fail

If you want to check with other color combinations, try the [Color Contrast Checker](#).

CIELCh 16, 16.266, 21.527

Background



This preview shows how black text looks on a background with the CIELCh color 16, 16.266, 21.527.

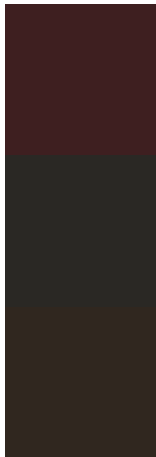


This preview shows how white text looks on a background with the CIELCh color 16, 16.266, 21.527.

Color Blindness Simulation

Color vision deficiency is a very complex topic, and I could not describe the different causes any better than Wikipedia does, so if you want to learn more, you should check out their [article about color blindness](#).

Dichromacy



Original Color

16, 16.266, 21.527

Protanopia

16, 2.958, 89.678

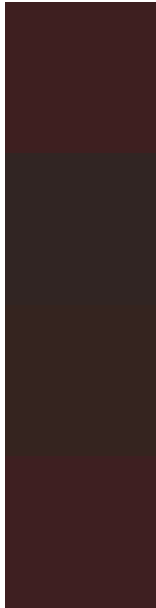
Deuteranopia

16, 7.360, 68.681



Tritanopia
16, 16.160, 19.125

Trichromacy



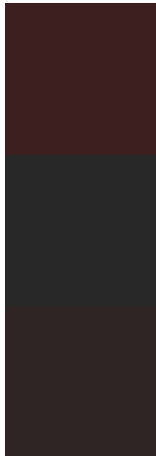
Original Color
16, 16.266, 21.527

Protanomaly
16, 6.330, 33.436

Deuteranomaly
16, 9.767, 42.002

Tritanomaly
16, 16.160, 19.125

Monochromacy



Original Color
16, 16.266, 21.527

Achromatopsia
16, 0.003, 296.813

Achromatomaly
16, 5.545, 20.729

CSS Examples

Text

The CSS property to change the color of the text to CIELCh 16, 16.266, 21.527 is called "color". The color property can be set on classes, ids or directly on the HTML element.

This example shows how text in the color `rgb(62, 31, 32)` looks like.

```
.text, #text, p{  
    color:rgb(62, 31, 32)  
}
```

If you want to add a text shadow in that color use the text-shadow property, you can generate a text shadow directly with our [CSS Text Shadow Generator](#).

Here you see how black text with a 4 pixel rgb(62, 31, 32) colored shadow looks like.

```
.shadow{ text-shadow: 4px 4px 2px rgb(62, 31, 32) }
```

Border

The CSS property to change the border of an element to CIELCh 16, 16.266, 21.527 is called "border". The border property can be set on classes, ids or directly on the HTML element.

This example shows the color as border, it can be applied via the CSS property "border" or "border-color".

```
.border, #border, table{ border:4px solid rgb(62, 31, 32) }
```

If only the border color should be changed use the property `border-color`.

```
.border{ border-color:rgb(62, 31, 32) }
```

If you want to add a box shadow in that color use:

Here you see how a box with a 4 pixel `rgb(62, 31, 32)` colored shadow looks like.

```
.boxshadow{ -moz-box-shadow:4px 4px 4px  
4px rgb(62, 31, 32); -webkit-box-  
shadow:4px 4px 4px 4px rgb(62, 31, 32);  
box-shadow:4px 4px 4px 4px rgb(62, 31, 32)  
}
```

Background

The CSS property to change the background color of an element to CIELCh 16, 16.266, 21.527 is called "background". The background property can be set on classes, ids or directly on the HTML element.

```
.background, #background, body{  
background: rgb(62, 31, 32) }
```

If only the background color should be changed can be used:

```
.background{ background-color: rgb(62, 31,  
32) }
```

This example shows the color as background, it is applied via the CSS property "background".

To optimize and compress your CSS code, you can use our [online CSS compressor and optimizer](#) based on csstidy. If you want to create a linear or radial gradient as background or border, check our [CSS Gradient Generator](#).

Hey! You found this booklet interesting? Support Converting Colors with the new Membership Option!

The pro membership hides all ads, plus gives you double the colors in the color bucket, and more awesome pro features!

[Learn more, Memberships starting at \\$2.50/m!](#)

**Follow me
on Twitter!**

@ConvertingColor