

Converting Colors

CIELCh(16, 17.042, 23.804)

Have a look what the booklet for
CIELCh(16, 17.042, 23.804) contains.

CIELCh(16, 16.932, 24.035)	3
<i>Conversions</i>	4
<i>Details</i>	6
<i>Harmonies</i>	11
<i>Previews</i>	20
<i>Color Blindness Simulation</i>	23
<i>CSS Examples</i>	26

Color

CIELCh(16, 16.932, 24.035)

Conversions

Conversions Part 1

Format	Color
Hex	3F1F1F
RGB	63, 31, 31
RGB Percent	25%, 12%, 12%
CMY	0.7547, 0.8799, 0.8799
CMYK	0.00, 0.51, 0.51, 0.75
HSL	360°, 34%, 18%
HSV	360°, 51%, 25%
XYZ	2.7445, 2.0993, 1.5313
YIQ	40.5680, 19.0720, 6.7840

Conversions

Conversions Part 2

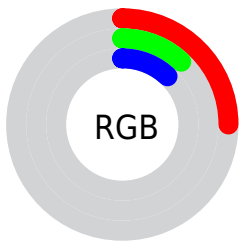
Format	Color
RYB	63, 31, 31
Decimal	4136735
CIELab	16.00, 15.46, 6.90
CIElCh	16, 16.932, 24.035
Yxy	2.0993, 0.4305, 0.3293
Android (android.graphics.Color)	4282326815 (0xFF3F1F1F)
YUV	40.5680, -4.7170, 19.6729
Hunter-Lab	14.4890, 8.4556, 3.8760

Details

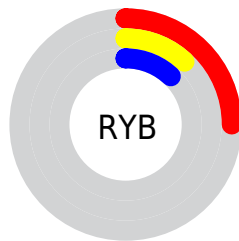
The CIELCh color **16, 16.932, 24.035** is a dark color, and the websafe version is hex **330000**. A complement of this color would be **24, 12.301, 197.312**, and the grayscale version is **16, 0.003, 296.813**.

A 20% lighter version of the original color is **36, 16.553, 24.056**, and **0, 0.000, 0.000** is the 20% darker color. If you saturate the color by 10%, you get **14, 20.756, 25.800**, and if you desaturate by 10%, it is **18, 13.226, 22.640**.

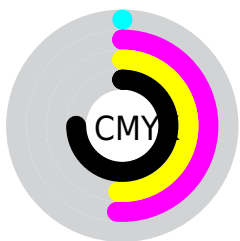
Distribution



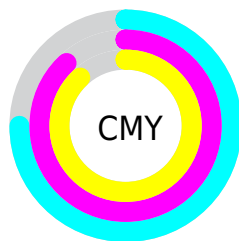
- Red (25%)
- Green (12%)
- Blue (12%)



- Red (25%)
- Yellow (12%)
- Blue (12%)



- Cyan (0%)
- Magenta (51%)
- Yellow (51%)
- Black (75%)



- Cyan (75%)
- Magenta (88%)
- Yellow (88%)


Brightness & Saturation Gradients

These gradients show how the CIELCh color 16, 16.932, 24.035 changes by changing the brightness by 10 percent. The first figure shows a shift by +10% for each color and the second figure -10%.

Similar to the brightness gradients but the following saturation gradients show a change of the CIELCh color 16, 16.932, 24.035 by changing the saturation by 10% instead.

 16, 16.932, 24.035

 16, 16.932, 24.035

 100, 16.932,
24.035

 6, 16.932, 24.035

 36, 16.932, 24.035

 0, 16.932, 24.035

 46, 16.932, 24.035

 56, 16.932, 24.035

 66, 16.932, 24.035

 76, 16.932, 24.035

 86, 16.932, 24.035

 96, 16.932, 24.035

■ 16, 16.932, 24.035

■ 16, 16.932, 24.035

■ 14, 20.756, 25.800

■ 18, 13.226, 22.640

■ 13, 24.501, 27.443

■ 20, 9.692, 21.532

■ 11, 27.641, 27.739

■ 22, 6.355, 20.646

■ 10, 30.293, 27.392

■ 24, 3.226, 19.913

■ 9, 32.819, 26.689

■ 26, 0.300, 18.623

■ 28, 2.432, 199.079

■ 31, 4.985, 198.660

■ 33, 7.376, 198.342

■ 35, 9.622, 198.083

Harmonies

Complementary

The Complementary color scheme is a pair of colors which are on the opposite of each other on the color wheel.



16, 16.932, 24.035



24, 12.301, 197.312

Rectangle

The Rectangle color scheme consists of four colors that form a rectangle on the color wheel.



16, 16.932, 24.035



16, 16.932, 74.035



16, 16.932, 204.035



16, 16.932, 254.035

Sweetspot

The Sweet Spot groups the original color and five complimentary colors.



16, 16.931, 24.038



31, 5.543, 20.237



17, 25.241, 326.294



14, 3.726, 20.290



69, 0.009, 296.813



16, 0.003, 296.813

Same Dimension

The Same Dimension uses a secret algorithm to generate beautiful new colors.



16, 16.931, 24.038



20, 26.017, 26.338



20, 13.849, 68.171



10, 1.574, 19.728



17, 47.172, 34.857



46, 94.115, 39.987

Inverse Universe

The Inverse Universe completely reimagines the original color for something new.



16, 16.931, 24.038



20, 26.017, 26.338



19, 12.011, 261.531



10, 1.574, 19.728



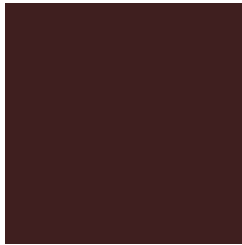
17, 47.172, 34.857



46, 94.115, 39.987

Previews

White Background



This preview shows how the CIELCh color 16, 16.932, 24.035 looks on a white background.

Color Contrast Check

Large Text (above 18pt) WCAG AA ✓ Pass

Any Text WCAG AA ✓ Pass

Large Text (above 18pt) WCAG AAA ✓ Pass

Any Text WCAG AAA ✓ Pass

Black Background



This preview shows how the CIE LCh color 16, 16.932, 24.035 looks on a black background.

Color Contrast Check

Large Text (above 18pt) WCAG AA × Fail

Any Text WCAG AA × Fail

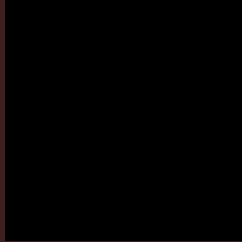
Large Text (above 18pt) WCAG AAA × Fail

Any Text WCAG AAA × Fail

If you want to check with other color combinations, try the [Color Contrast Checker](#).

CIELCh 16, 16.932, 24.035

Background



This preview shows how black text looks on a background with the CIELCh color 16, 16.932, 24.035.

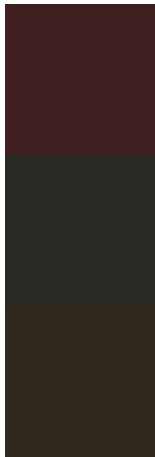


This preview shows how white text looks on a background with the CIELCh color 16, 16.932, 24.035.

Color Blindness Simulation

Color vision deficiency is a very complex topic, and I could not describe the different causes any better than Wikipedia does, so if you want to learn more, you should check out their [article about color blindness](#).

Dichromacy



Original Color

16, 16.932, 24.035

Protanopia

16, 3.624, 93.110

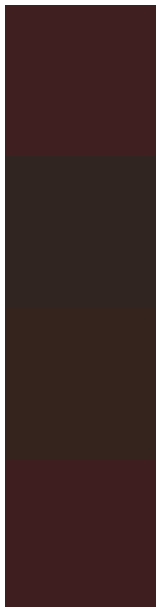
Deuteranopia

16, 8.509, 74.044



Tritanopia
16, 17.266, 19.841

Trichromacy



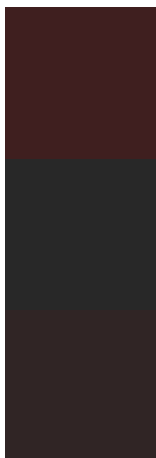
Original Color
16, 16.932, 24.035

Protanomaly
16, 6.885, 44.436

Deuteranomaly
16, 10.116, 45.406

Tritanomaly
16, 17.266, 19.841

Monochromacy



Original Color
16, 16.932, 24.035

Achromatopsia
16, 0.003, 296.813

Achromatomaly
16, 5.545, 20.729

CSS Examples

Text

The CSS property to change the color of the text to CIELCh 16, 16.932, 24.035 is called "color". The color property can be set on classes, ids or directly on the HTML element.

This example shows how text in the color `rgb(63, 31, 31)` looks like.

```
.text, #text, p{  
    color:rgb(63, 31, 31)  
}
```

If you want to add a text shadow in that color use the text-shadow property, you can generate a text shadow directly with our [CSS Text Shadow Generator](#).

Here you see how black text with a 4 pixel rgb(63, 31, 31) colored shadow looks like.

```
.shadow{ text-shadow: 4px 4px 2px rgb(63, 31, 31) }
```

Border

The CSS property to change the border of an element to CIELCh 16, 16.932, 24.035 is called "border". The border property can be set on classes, ids or directly on the HTML element.

This example shows the color as border, it can be applied via the CSS property "border" or "border-color".

```
.border, #border, table{ border:4px solid rgb(63, 31, 31) }
```

If only the border color should be changed use the property border-color.

```
.border{ border-color:rgb(63, 31, 31) }
```

If you want to add a box shadow in that color use:

Here you see how a box with a 4 pixel rgb(63, 31, 31) colored shadow looks like.

```
.boxshadow{ -moz-box-shadow:4px 4px 4px  
4px rgb(63, 31, 31); -webkit-box-  
shadow:4px 4px 4px 4px rgb(63, 31, 31);  
box-shadow:4px 4px 4px 4px rgb(63, 31, 31)  
}
```

Background

The CSS property to change the background color of an element to CIELCh 16, 16.932, 24.035 is called "background". The background property can be set on classes, ids or directly on the HTML element.

```
.background, #background, body{  
background: rgb(63, 31, 31) }
```

If only the background color should be changed can be used:

```
.background{ background-color: rgb(63, 31,  
31) }
```

This example shows the color as background, it is applied via the CSS property "background".

To optimize and compress your CSS code, you can use our [online CSS compressor and optimizer](#) based on csstidy. If you want to create a linear or radial gradient as background or border, check our [CSS Gradient Generator](#).

Hey! You found this booklet interesting? Support Converting Colors with the new Membership Option!

The pro membership hides all ads, plus gives you double the colors in the color bucket, and more awesome pro features!

[Learn more, Memberships starting at \\$2.50/m!](#)

**Follow me
on Twitter!**

@ConvertingColor