

Converting Colors

CIELCh(16, 27.269, 42.767)

Have a look what the booklet for
CIELCh(16, 27.269, 42.767) contains.

CIELCh(16, 27.299, 42.389)	3
<i>Conversions</i>	4
<i>Details</i>	6
<i>Harmonies</i>	11
<i>Previews</i>	20
<i>Color Blindness Simulation</i>	23
<i>CSS Examples</i>	26

Color

CIELCh(16, 27.299, 42.389)

Conversions

Conversions Part 1

Format	Color
Hex	461A0D
RGB	70, 26, 13
RGB Percent	27%, 10%, 5%
CMY	0.7240, 0.8967, 0.9474
CMYK	0.00, 0.63, 0.81, 0.72
HSL	14°, 68%, 16%
HSV	14°, 81%, 28%
XYZ	3.0045, 2.0993, 0.6420
YIQ	37.6740, 30.3970, 5.2850

Conversions

Conversions Part 2

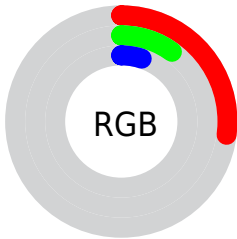
Format	Color
R_{YB}	70, 30, 13
Decimal	4594189
CIE _{Lab}	16.00, 20.16, 18.40
CIE _{LCh}	16, 27.299, 42.389
Yxy	2.0993, 0.5229, 0.3654
Android (android.graphics.Color)	4282784269 (0xFF461A0D)
YUV	37.6740, -12.1643, 28.3499
Hunter-Lab	14.4890, 11.6588, 7.5153

Details

The CIELCh color **16, 27.299, 42.389** is a dark color, and the websafe version is hex **330000**. A complement of this color would be **22, 15.618, 231.591**, and the grayscale version is **15, 0.003, 296.813**.

A 20% lighter version of the original color is **36, 27.219, 42.316**, and **0, 1.664, 19.405** is the 20% darker color. If you saturate the color by 10%, you get **15, 30.262, 40.896**, and if you desaturate by 10%, it is **17, 23.628, 42.794**.

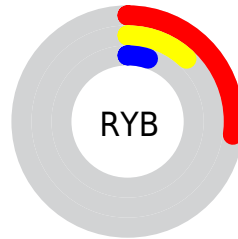
Distribution



Red (27%)

Green (10%)

Blue (5%)



Red (27%)

Yellow (12%)

Blue (5%)

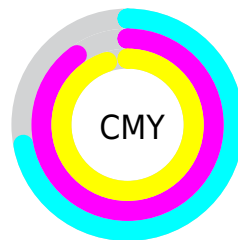


Cyan (0%)

Magenta (63%)

Yellow (81%)

Black (72%)



Cyan (72%)

Magenta (90%)

Yellow (95%)


Brightness & Saturation Gradients

These gradients show how the CIELCh color 16, 27.299, 42.389 changes by changing the brightness by 10 percent. The first figure shows a shift by +10% for each color and the second figure -10%.

Similar to the brightness gradients but the following saturation gradients show a change of the CIELCh color 16, 27.299, 42.389 by changing the saturation by 10% instead.

 16, 27.299, 42.389

 16, 27.299, 42.389

 100, 27.299,
42.389

 6, 27.299, 42.389

 36, 27.299, 42.389

 0, 27.299, 42.389

 46, 27.299, 42.389

 56, 27.299, 42.389

 66, 27.299, 42.389

 76, 27.299, 42.389

 86, 27.299, 42.389

 96, 27.299, 42.389

■ 16, 27.299, 42.389

■ 16, 27.299, 42.389

■ 15, 30.262, 40.896

■ 17, 23.628, 42.794

■ 14, 32.768, 40.082

■ 19, 19.644, 42.356

■ 21, 15.853, 42.077

■ 22, 12.284, 41.949

■ 24, 8.947, 41.952

■ 26, 5.836, 42.058

■ 28, 2.939, 42.224

■ 30, 0.240, 41.529

■ 32, 2.279, 223.029

Harmonies

Complementary

The Complementary color scheme is a pair of colors which are on the opposite of each other on the color wheel.



16, 27.299, 42.389



22, 15.618, 231.591

Rectangle

The Rectangle color scheme consists of four colors that form a rectangle on the color wheel.



16, 27.299, 42.389



16, 27.299, 92.389



16, 27.299, 222.389



16, 27.299, 272.389

Sweetspot

The Sweet Spot groups the original color and five complimentary colors.



16, 27.298, 42.392



33, 8.469, 42.005



15, 34.848, 336.329



15, 5.768, 41.987



71, 0.009, 296.813



19, 0.004, 296.813

Same Dimension

The Same Dimension uses a secret algorithm to generate beautiful new colors.



16, 27.298, 42.392



20, 41.475, 42.830



24, 27.210, 85.318



13, 1.504, 42.259



21, 45.883, 43.343



50, 90.227, 44.029

Inverse Universe

The Inverse Universe completely reimagines the original color for something new.



22, 15.618, 231.591



28, 20.671, 237.214



12, 29.411, 290.176



13, 1.437, 223.034



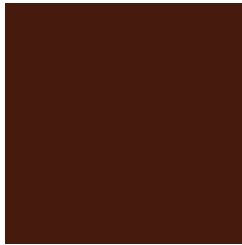
30, 22.202, 238.551



67, 41.058, 241.976

Previews

White Background



This preview shows how the CIE LCh color 16, 27.299, 42.389 looks on a white background.

Color Contrast Check

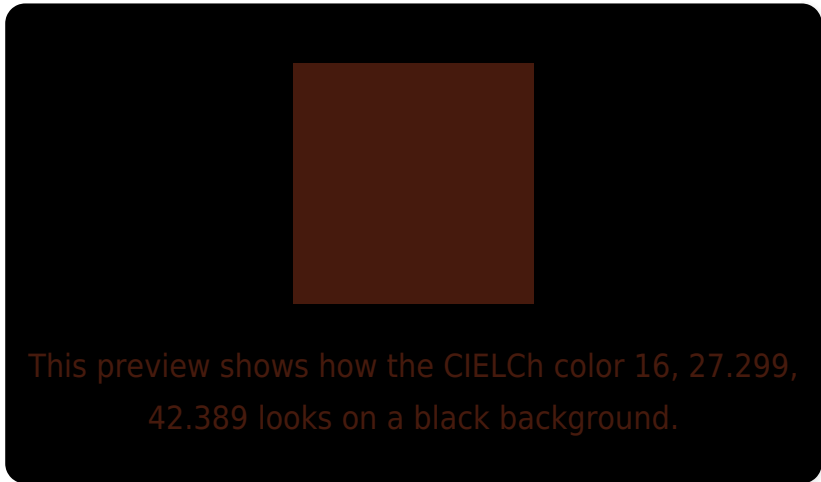
Large Text (above 18pt) WCAG AA ✓ Pass

Any Text WCAG AA ✓ Pass

Large Text (above 18pt) WCAG AAA ✓ Pass

Any Text WCAG AAA ✓ Pass

Black Background



Color Contrast Check

Large Text (above 18pt) WCAG AA × Fail

Any Text WCAG AA × Fail

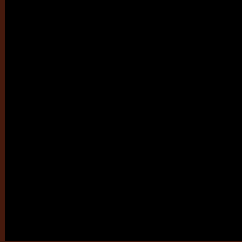
Large Text (above 18pt) WCAG AAA × Fail

Any Text WCAG AAA × Fail

If you want to check with other color combinations, try the [Color Contrast Checker](#).

CIELCh 16, 27.299, 42.389

Background



This preview shows how black text looks on a background with the CIELCh color 16, 27.299, 42.389.

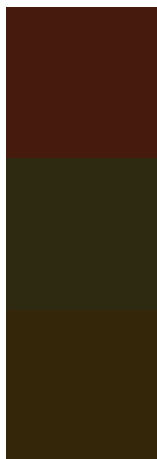


This preview shows how white text looks on a background with the CIELCh color 16, 27.299, 42.389.

Color Blindness Simulation

Color vision deficiency is a very complex topic, and I could not describe the different causes any better than Wikipedia does, so if you want to learn more, you should check out their [article about color blindness](#).

Dichromacy



Original Color

16, 27.299, 42.389

Protanopia

17, 16.452, 96.065

Deuteranopia

17, 20.457, 83.881



Tritanopia
16, 24.526, 25.388

Trichromacy



Original Color
16, 27.299, 42.389

Protanomaly
16, 17.786, 68.822

Deuteranomaly
16, 21.331, 63.505

Tritanomaly
16, 25.796, 32.615

Monochromacy



Original Color
16, 27.299, 42.389

Achromatopsia
15, 0.003, 296.813

Achromatomaly
15, 9.356, 43.094

CSS Examples

Text

The CSS property to change the color of the text to CIELCh 16, 27.299, 42.389 is called "color". The color property can be set on classes, ids or directly on the HTML element.

This example shows how text in the color `rgb(70, 26, 13)` looks like.

```
.text, #text, p{  
    color:rgb(70, 26, 13)  
}
```

If you want to add a text shadow in that color use the text-shadow property, you can generate a text shadow directly with our [CSS Text Shadow Generator](#).

Here you see how black text with a 4 pixel rgb(70, 26, 13) colored shadow looks like.

```
.shadow{ text-shadow: 4px 4px 2px rgb(70, 26, 13) }
```

Border

The CSS property to change the border of an element to CIELCh 16, 27.299, 42.389 is called "border". The border property can be set on classes, ids or directly on the HTML element.

This example shows the color as border, it can be applied via the CSS property "border" or "border-color".

```
.border, #border, table{ border:4px solid rgb(70, 26, 13) }
```

If only the border color should be changed use the property `border-color`.

```
.border{ border-color:rgb(70, 26, 13) }
```

If you want to add a box shadow in that color use:

Here you see how a box with a 4 pixel `rgb(70, 26, 13)` colored shadow looks like.

```
.boxshadow{ -moz-box-shadow:4px 4px 4px  
4px rgb(70, 26, 13); -webkit-box-  
shadow:4px 4px 4px 4px rgb(70, 26, 13);  
box-shadow:4px 4px 4px 4px rgb(70, 26, 13)  
}
```

Background

The CSS property to change the background color of an element to CIELCh 16, 27.299, 42.389 is called "background". The background property can be set on classes, ids or directly on the HTML element.

```
.background, #background, body{  
background: rgb(70, 26, 13) }
```

If only the background color should be changed can be used:

```
.background{ background-color: rgb(70, 26,  
13) }
```

This example shows the color as background, it is applied via the CSS property "background".

To optimize and compress your CSS code, you can use our [online CSS compressor and optimizer](#) based on csstidy. If you want to create a linear or radial gradient as background or border, check our [CSS Gradient Generator](#).

Hey! You found this booklet
interesting? Support Converting
Colors with the new Membership
Option!

The pro membership hides all ads, plus gives you
double the colors in the color bucket, and more
awesome pro features!

[Learn more, Memberships starting at \\$2.50/m!](#)

**Follow me
on Twitter!**

@ConvertingColor