

Converting Colors

CIELCh(16, 9.563, 70.952)

Have a look what the booklet for
CIELCh(16, 9.563, 70.952) contains.

CIELCh(16, 9.800, 70.781)	3
<i>Conversions</i>	4
<i>Details</i>	6
<i>Harmonies</i>	11
<i>Previews</i>	20
<i>Color Blindness Simulation</i>	23
<i>CSS Examples</i>	26

Color

CIELCh(16, 9.800, 70.781)

Conversions

Conversions Part 1

Format	Color
Hex	31261B
RGB	49, 38, 27
RGB Percent	19%, 15%, 11%
CMY	0.8087, 0.8518, 0.8949
CMYK	0.00, 0.23, 0.45, 0.81
HSL	30°, 29%, 15%
HSV	30°, 45%, 19%
XYZ	2.1386, 2.0993, 1.3178
YIQ	40.0350, 10.0870, -1.0890

Conversions

Conversions Part 2

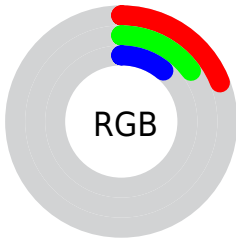
Format	Color
RYB	49, 49, 27
Decimal	3221019
CIELab	16.00, 3.23, 9.25
CIELCh	16, 9.800, 70.781
Yxy	2.0993, 0.3849, 0.3779
Android (android.graphics.Color)	4281411099 (0xFF31261B)
YUV	40.0350, -6.4263, 7.8623
Hunter-Lab	14.4890, 0.9916, 4.7499

Details

The CIELCh color **16, 9.800, 70.781** is a dark color, and the websafe version is hex **333333**. A complement of this color would be **15, 8.818, 261.708**, and the grayscale version is **16, 0.003, 296.813**.

A 20% lighter version of the original color is **36, 10.069, 72.292**, and **0, 0.000, 0.000** is the 20% darker color. If you saturate the color by 10%, you get **15, 12.207, 69.735**, and if you desaturate by 10%, it is **17, 7.476, 71.830**.

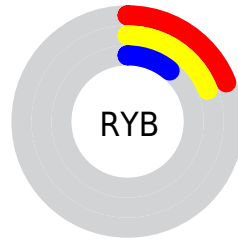
Distribution



Red (19%)

Green (15%)

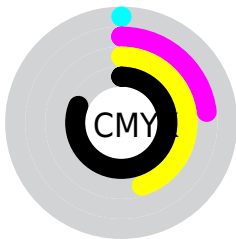
Blue (11%)



Red (19%)

Yellow (19%)

Blue (11%)

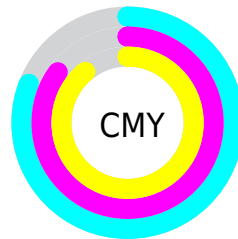


Cyan (0%)

Magenta (23%)

Yellow (45%)

Black (81%)



Cyan (81%)

Magenta (85%)

Yellow (89%)

Brightness & Saturation Gradients

These gradients show how the CIELCh color 16, 9.800, 70.781 changes by changing the brightness by 10 percent. The first figure shows a shift by +10% for each color and the second figure -10%.

Similar to the brightness gradients but the following saturation gradients show a change of the CIELCh color 16, 9.800, 70.781 by changing the saturation by 10% instead.

 16, 9.800, 70.781  16, 9.800, 70.781

 100, 9.800, 70.781  6, 9.800, 70.781

 36, 9.800, 70.781  0, 9.800, 70.781

 46, 9.800, 70.781

 56, 9.800, 70.781

 66, 9.800, 70.781

 76, 9.800, 70.781

 86, 9.800, 70.781

 96, 9.800, 70.781

 16, 9.800, 70.781  16, 9.800, 70.781

■ 15, 12.207, 69.735

■ 17, 7.476, 71.830

■ 14, 14.498, 68.382

■ 18, 5.239, 72.862

■ 13, 16.291, 66.241

■ 19, 3.087, 73.874

■ 13, 17.708, 63.606

■ 20, 1.015, 74.797

■ 12, 19.112, 61.303

■ 21, 0.982, 256.070

■ 11, 19.816, 60.306

■ 22, 2.911, 256.950

■ 23, 4.777, 257.880

■ 24, 6.587, 258.792

■ 25, 8.346, 259.678

Harmonies

Complementary

The Complementary color scheme is a pair of colors which are on the opposite of each other on the color wheel.



16, 9.800, 70.781



15, 8.818, 261.708

Rectangle

The Rectangle color scheme consists of four colors that form a rectangle on the color wheel.



16, 9.800, 70.781



16, 9.800, 120.781



16, 9.800, 250.781



16, 9.800, 300.781

Sweetspot

The Sweet Spot groups the original color and five complimentary colors.



16, 9.800, 70.787



25, 3.593, 73.901



13, 13.171, 347.296



12, 2.510, 73.841



66, 0.008, 296.813



13, 0.003, 296.813

Same Dimension

The Same Dimension uses a secret algorithm to generate beautiful new colors.



16, 9.800, 70.787



21, 15.047, 69.531



20, 14.662, 106.589



8, 1.158, 74.489



24, 37.795, 62.577



58, 75.560, 60.175

Inverse Universe

The Inverse Universe completely reimagines the original color for something new.



15, 8.818, 261.708



18, 13.126, 264.161



11, 16.121, 295.074



8, 1.144, 256.394



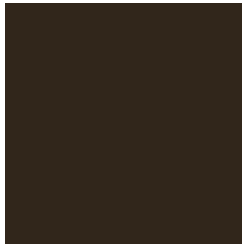
18, 31.283, 280.419



47, 64.580, 284.600

Previews

White Background



This preview shows how the CIELCh color 16, 9.800, 70.781 looks on a white background.

Color Contrast Check

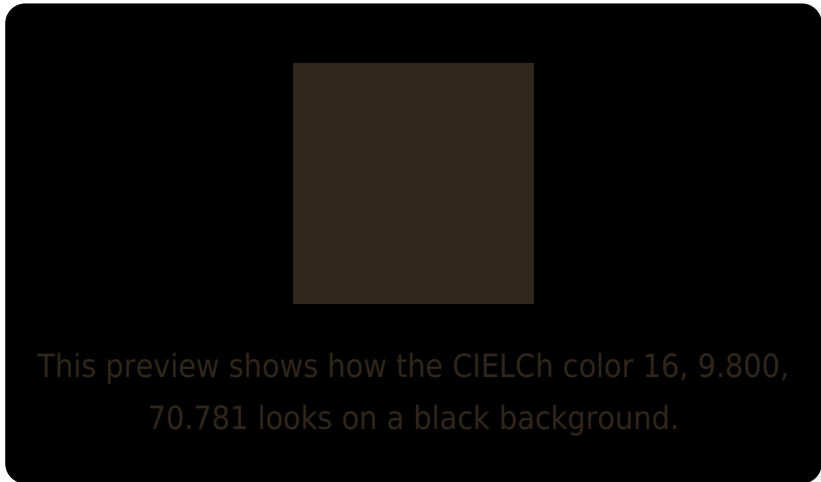
Large Text (above 18pt) WCAG AA ✓ Pass

Any Text WCAG AA ✓ Pass

Large Text (above 18pt) WCAG AAA ✓ Pass

Any Text WCAG AAA ✓ Pass

Black Background



Color Contrast Check

Large Text (above 18pt) WCAG AA × Fail

Any Text WCAG AA × Fail

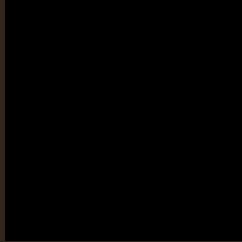
Large Text (above 18pt) WCAG AAA × Fail

Any Text WCAG AAA × Fail

If you want to check with other color combinations, try the [Color Contrast Checker](#).

CIELCh 16, 9.800, 70.781

Background



This preview shows how black text looks on a background with the CIELCh color 16, 9.800, 70.781.

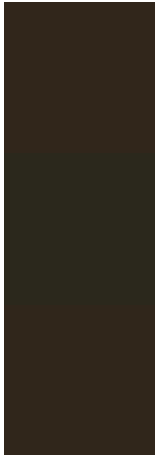


This preview shows how white text looks on a background with the CIELCh color 16, 9.800, 70.781.

Color Blindness Simulation

Color vision deficiency is a very complex topic, and I could not describe the different causes any better than Wikipedia does, so if you want to learn more, you should check out their [article about color blindness](#).

Dichromacy



Original Color

16, 9.800, 70.781

Protanopia

16, 8.484, 97.134

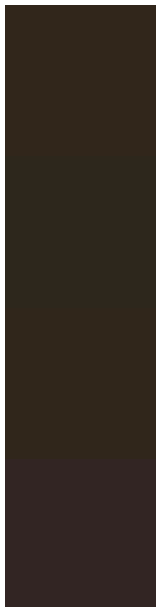
Deuteranopia

16, 9.462, 73.342



Tritanopia
16, 7.260, 4.606

Trichromacy



Original Color
16, 9.800, 70.781

Protanomaly
16, 8.328, 85.537

Deuteranomaly
16, 9.462, 73.342

Tritanomaly
16, 6.846, 32.579

Monochromacy



Original Color
16, 9.800, 70.781

Achromatopsia
16, 0.003, 296.813

Achromatomaly
16, 3.449, 73.555

CSS Examples

Text

The CSS property to change the color of the text to CIELCh 16, 9.800, 70.781 is called "color". The color property can be set on classes, ids or directly on the HTML element.

This example shows how text in the color `rgb(49, 38, 27)` looks like.

```
.text, #text, p{  
    color:rgb(49, 38, 27)  
}
```

If you want to add a text shadow in that color use the text-shadow property, you can generate a text shadow directly with our [CSS Text Shadow Generator](#).

Here you see how black text with a 4 pixel rgb(49, 38, 27) colored shadow looks like.

```
.shadow{ text-shadow: 4px 4px 2px rgb(49, 38, 27) }
```

Border

The CSS property to change the border of an element to CIELCh 16, 9.800, 70.781 is called "border". The border property can be set on classes, ids or directly on the HTML element.

This example shows the color as border, it can be applied via the CSS property "border" or "border-color".

```
.border, #border, table{ border:4px solid rgb(49, 38, 27) }
```

If only the border color should be changed use the property `border-color`.

```
.border{ border-color:rgb(49, 38, 27) }
```

If you want to add a box shadow in that color use:

Here you see how a box with a 4 pixel `rgb(49, 38, 27)` colored shadow looks like.

```
.boxshadow{ -moz-box-shadow:4px 4px 4px  
4px rgb(49, 38, 27); -webkit-box-  
shadow:4px 4px 4px 4px rgb(49, 38, 27);  
box-shadow:4px 4px 4px 4px rgb(49, 38, 27)  
}
```

Background

The CSS property to change the background color of an element to CIELCh 16, 9.800, 70.781 is called "background". The background property can be set on classes, ids or directly on the HTML element.

```
.background, #background, body{  
background: rgb(49, 38, 27) }
```

If only the background color should be changed can be used:

```
.background{ background-color: rgb(49, 38,  
27) }
```

This example shows the color as background, it is applied via the CSS property "background".

To optimize and compress your CSS code, you can use our [online CSS compressor and optimizer](#) based on csstidy. If you want to create a linear or radial gradient as background or border, check our [CSS Gradient Generator](#).

Hey! You found this booklet
interesting? Support Converting
Colors with the new Membership
Option!

The pro membership hides all ads, plus gives you
double the colors in the color bucket, and more
awesome pro features!

[Learn more, Memberships starting at \\$2.50/m!](#)

**Follow me
on Twitter!**

@ConvertingColor