

Converting Colors

CIELCh(17, 14.707, 29.351)

Have a look what the booklet for
CIELCh(17, 14.707, 29.351) contains.

CIELCh(17, 14.553, 30.901)	3
<i>Conversions</i>	4
<i>Details</i>	6
<i>Harmonies</i>	11
<i>Previews</i>	20
<i>Color Blindness Simulation</i>	23
<i>CSS Examples</i>	26

Color

CIELCh(17, 14.553, 30.901)

Conversions

Conversions Part 1	
Format	Color
Hex	3E2320
RGB	62, 35, 32
RGB Percent	24%, 14%, 13%
CMY	0.7581, 0.8638, 0.8756
CMYK	0.00, 0.44, 0.49, 0.76
HSL	6°, 32%, 18%
HSV	6°, 49%, 24%
XYZ	2.8167, 2.3023, 1.6431
YIQ	42.7310, 17.0550, 4.7910

Conversions

Conversions Part 2

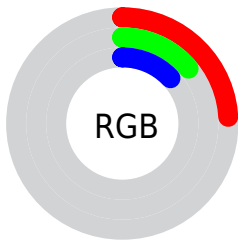
Format	Color
RYB	62, 35, 32
Decimal	4072224
CIELab	17.00, 12.49, 7.47
CIELCh	17, 14.553, 30.901
Yxy	2.3023, 0.4165, 0.3405
Android (android.graphics.Color)	4282262304 (0xFF3E2320)
YUV	42.7310, -5.2904, 16.8989
Hunter-Lab	15.1734, 6.5821, 4.2012

Details

The CIELCh color **17, 14.553, 30.901** is a dark color, and the websafe version is hex **333333**. A complement of this color would be **23, 10.607, 208.620**, and the grayscale version is **17, 0.003, 296.813**.

A 20% lighter version of the original color is **37, 14.472, 31.090**, and **0, 0.000, 0.000** is the 20% darker color. If you saturate the color by 10%, you get **15, 18.124, 31.950**, and if you desaturate by 10%, it is **19, 11.165, 30.103**.

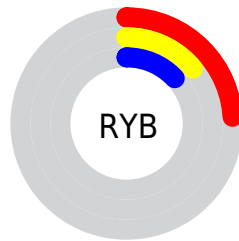
Distribution



Red (24%)

Green (14%)

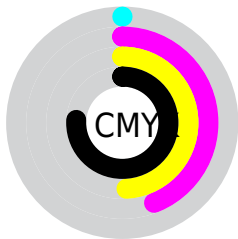
Blue (13%)



Red (24%)

Yellow (14%)

Blue (13%)

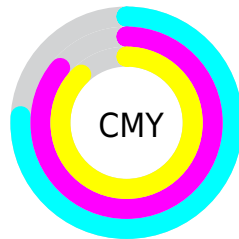


Cyan (0%)

Magenta (44%)

Yellow (49%)

Black (76%)



Cyan (76%)

Magenta (86%)

Yellow (88%)

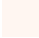
Brightness & Saturation Gradients

These gradients show how the CIELCh color 17, 14.553, 30.901 changes by changing the brightness by 10 percent. The first figure shows a shift by +10% for each color and the second figure -10%.

Similar to the brightness gradients but the following saturation gradients show a change of the CIELCh color 17, 14.553, 30.901 by changing the saturation by 10% instead.

 17, 14.553, 30.901

 17, 14.553, 30.901

 100, 14.553,
30.901

 7, 14.553, 30.901

 0, 14.553, 30.901

 37, 14.553, 30.901

 47, 14.553, 30.901

 57, 14.553, 30.901

 67, 14.553, 30.901

 77, 14.553, 30.901

 87, 14.553, 30.901

 97, 14.553, 30.901

 17, 14.553, 30.901

 17, 14.553, 30.901

 15, 18.124, 31.950

 19, 11.165, 30.103

 14, 21.794, 33.080

 21, 7.981, 29.498

 12, 25.026, 32.825

 22, 5.004, 29.045

 11, 27.712, 31.832

 24, 2.227, 28.676

 10, 30.141, 31.474

 26, 0.360, 209.248

 10, 30.495, 31.410

 28, 2.773, 208.531

 30, 5.027, 208.420

 32, 7.138, 208.380

 34, 9.122, 208.383

Harmonies

Complementary

The Complementary color scheme is a pair of colors which are on the opposite of each other on the color wheel.



17, 14.553, 30.901



23, 10.607, 208.620

Rectangle

The Rectangle color scheme consists of four colors that form a rectangle on the color wheel.



17, 14.553, 30.901



17, 14.553, 80.901



17, 14.553, 210.901



17, 14.553, 260.901

Sweetspot

The Sweet Spot groups the original color and five complimentary colors.



17, 14.552, 30.905



30, 4.919, 28.933



17, 22.598, 329.186



14, 3.397, 28.963



69, 0.009, 296.813



16, 0.003, 296.813

Same Dimension

The Same Dimension uses a secret algorithm to generate beautiful new colors.



17, 14.552, 30.905



21, 22.199, 32.178



21, 13.545, 78.275



10, 1.433, 28.670



18, 45.697, 37.920



47, 92.624, 41.011

Inverse Universe

The Inverse Universe completely reimagines the original color for something new.



23, 10.607, 208.620



29, 14.730, 209.010



18, 12.767, 271.351



11, 1.367, 208.579



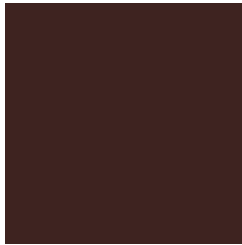
32, 21.676, 212.909



74, 40.143, 214.413

Previews

White Background



This preview shows how the CIELCh color 17, 14.553, 30.901 looks on a white background.

Color Contrast Check

Large Text (above 18pt) WCAG AA ✓ Pass

Any Text WCAG AA ✓ Pass

Large Text (above 18pt) WCAG AAA ✓ Pass

Any Text WCAG AAA ✓ Pass

Black Background



This preview shows how the CIELCh color 17, 14.553, 30.901 looks on a black background.

Color Contrast Check

Large Text (above 18pt) WCAG AA × Fail

Any Text WCAG AA × Fail

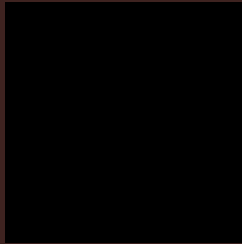
Large Text (above 18pt) WCAG AAA × Fail

Any Text WCAG AAA × Fail

If you want to check with other color combinations, try the [Color Contrast Checker](#).

CIELCh 17, 14.553, 30.901

Background



This preview shows how black text looks on a background with the CIELCh color 17, 14.553, 30.901.



This preview shows how white text looks on a background with the CIELCh color 17, 14.553, 30.901.

Color Blindness Simulation

Color vision deficiency is a very complex topic, and I could not describe the different causes any better than Wikipedia does, so if you want to learn more, you should check out their [article about color blindness](#).

Dichromacy



Original Color

17, 14.553, 30.901

Protanopia

17, 5.073, 91.451

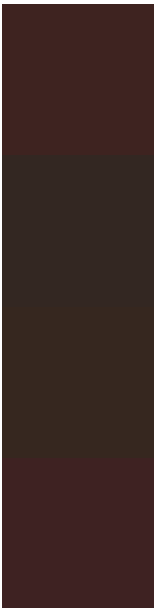
Deuteranopia

17, 8.437, 74.177



Tritanopia
17, 14.419, 17.853

Trichromacy



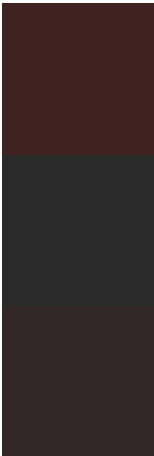
Original Color
17, 14.553, 30.901

Protanomaly
17, 7.180, 49.223

Deuteranomaly
17, 9.826, 54.643

Tritanomaly
17, 14.613, 23.193

Monochromacy



Original Color
17, 14.553, 30.901

Achromatopsia
17, 0.003, 296.813

Achromatomaly
17, 5.076, 28.336

CSS Examples

Text

The CSS property to change the color of the text to CIELCh 17, 14.553, 30.901 is called "color". The color property can be set on classes, ids or directly on the HTML element.

This example shows how text in the color `rgb(62, 35, 32)` looks like.

```
.text, #text, p{  
    color:rgb(62, 35, 32)  
}
```

If you want to add a text shadow in that color use the text-shadow property, you can generate a text shadow directly with our [CSS Text Shadow Generator](#).

Here you see how black text with a 4 pixel rgb(62, 35, 32) colored shadow looks like.

```
.shadow{ text-shadow: 4px 4px 2px rgb(62, 35, 32) }
```

Border

The CSS property to change the border of an element to CIELCh 17, 14.553, 30.901 is called "border". The border property can be set on classes, ids or directly on the HTML element.

This example shows the color as border, it can be applied via the CSS property "border" or "border-color".

```
.border, #border, table{ border:4px solid rgb(62, 35, 32) }
```

If only the border color should be changed use the property border-color.

```
.border{ border-color:rgb(62, 35, 32) }
```

If you want to add a box shadow in that color use:

Here you see how a box with a 4 pixel rgb(62, 35, 32) colored shadow looks like.

```
.boxshadow{ -moz-box-shadow:4px 4px 4px  
4px rgb(62, 35, 32); -webkit-box-  
shadow:4px 4px 4px 4px rgb(62, 35, 32);  
box-shadow:4px 4px 4px 4px rgb(62, 35, 32)  
}
```

Background

The CSS property to change the background color of an element to CIELCh 17, 14.553, 30.901 is called "background". The background property can be set on classes, ids or directly on the HTML element.

```
.background, #background, body{  
background: rgb(62, 35, 32) }
```

If only the background color should be changed can be used:

```
.background{ background-color: rgb(62, 35,  
32) }
```

This example shows the color as background, it is applied via the CSS property "background".

To optimize and compress your CSS code, you can use our [online CSS compressor and optimizer](#) based on csstidy. If you want to create a linear or radial gradient as background or border, check our [CSS Gradient Generator](#).

Hey! You found this booklet
interesting? Support Converting
Colors with the new Membership
Option!

The pro membership hides all ads, plus gives you
double the colors in the color bucket, and more
awesome pro features!

[Learn more, Memberships starting at \\$2.50/m!](#)

**Follow me
on Twitter!**

@ConvertingColor