

# Converting Colors

CIELCh(17, 14.730, 20.502)

Have a look what the booklet for  
CIELCh(17, 14.730, 20.502) contains.

<b>CIELCh(17, 14.498, 20.542)</b> .....	3
<b><i>Conversions</i></b> .....	4
<b><i>Details</i></b> .....	6
<b><i>Harmonies</i></b> .....	11
<b><i>Previews</i></b> .....	20
<b><i>Color Blindness Simulation</i></b> .....	23
<b><i>CSS Examples</i></b> .....	26

# Color

**CIELCh(17, 14.498, 20.542)**

# Conversions

## Conversions Part 1

Format	Color
Hex	3E2223
RGB	62, 34, 35
RGB Percent	24%, 13%, 14%
CMY	0.7563, 0.8662, 0.8622
CMYK	0.00, 0.45, 0.43, 0.76
HSL	358°, 29%, 19%
HSV	358°, 45%, 24%
XYZ	2.8766, 2.3023, 1.8927
YIQ	42.4860, 16.3670, 6.2470

# Conversions

## Conversions Part 2

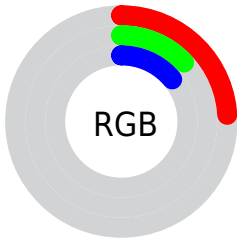
<b>Format</b>	<b>Color</b>
<b>RYB</b>	62, 34, 35
Decimal	4071971
CIELab	17.00, 13.58, 5.09
CIElCh	17, 14.498, 20.542
Yxy	2.3023, 0.4068, 0.3256
Android (android.graphics.Color)	4282262051 (0xFF3E2223)
YUV	42.4860, -3.6906, 17.1138
Hunter-Lab	15.1734, 7.2866, 3.2255

# Details

The CIELCh color **17, 14.498, 20.542** is a dark color, and the websafe version is hex **333333**. A complement of this color would be **24, 11.198, 194.104**, and the grayscale version is **17, 0.003, 296.813**.

A 20% lighter version of the original color is **37, 14.481, 21.589**, and **0, 0.277, 19.405** is the 20% darker color. If you saturate the color by 10%, you get **15, 18.156, 22.142**, and if you desaturate by 10%, it is **19, 10.966, 19.266**.

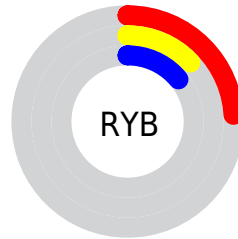
# Distribution



Red (24%)

Green (13%)

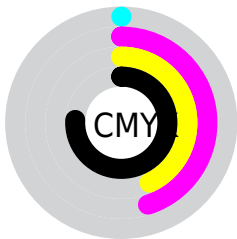
Blue (14%)



Red (24%)

Yellow (13%)

Blue (14%)

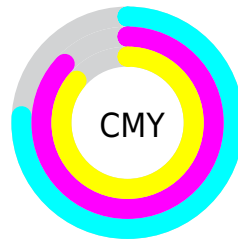


Cyan (0%)

Magenta (45%)

Yellow (43%)

Black (76%)



Cyan (76%)

Magenta (87%)

Yellow (86%)

# Brightness & Saturation Gradients


These gradients show how the CIELCh color 17, 14.498, 20.542 changes by changing the brightness by 10 percent. The first figure shows a shift by +10% for each color and the second figure -10%.

Similar to the brightness gradients but the following saturation gradients show a change of the CIELCh color 17, 14.498, 20.542 by changing the saturation by 10% instead.



 17, 14.498, 20.542

 17, 14.498, 20.542

 100, 14.498,  
20.542

 7, 14.498, 20.542

 37, 14.498, 20.542

 0, 14.498, 20.542

 47, 14.498, 20.542

 57, 14.498, 20.542

 67, 14.498, 20.542

 77, 14.498, 20.542

 87, 14.498, 20.542

 97, 14.498, 20.542

■ 17, 14.498, 20.542

■ 17, 14.498, 20.542

■ 15, 18.156, 22.142

■ 19, 10.966, 19.266

■ 14, 21.882, 24.133

■ 21, 7.603, 18.232

■ 12, 25.395, 25.704

■ 23, 4.428, 17.379

■ 11, 28.280, 26.129

■ 25, 1.444, 16.587

■ 10, 30.953, 25.566

■ 27, 1.354, 196.368

■ 9, 32.359, 25.112

■ 30, 3.976, 195.781

■ 32, 6.437, 195.361

■ 34, 8.751, 195.012

■ 36, 10.934,  
194.715

# Harmonies

# Complementary

The Complementary color scheme is a pair of colors which are on the opposite of each other on the color wheel.



17, 14.498, 20.542



24, 11.198, 194.104

# Rectangle

The Rectangle color scheme consists of four colors that form a rectangle on the color wheel.



17, 14.498, 20.542



17, 14.498, 70.542



17, 14.498, 200.542



17, 14.498, 250.542

# Sweetspot

The Sweet Spot groups the original color and five complimentary colors.



17, 14.497, 20.546



31, 5.151, 17.344



18, 22.149, 325.065



14, 3.505, 17.412



69, 0.009, 296.813



16, 0.003, 296.813



# Same Dimension

The Same Dimension uses a secret algorithm to generate beautiful new colors.



17, 14.497, 20.546



21, 22.405, 22.396



21, 11.887, 65.334



10, 1.575, 16.866



17, 46.513, 33.468



46, 92.681, 38.856





# Inverse Universe

The Inverse Universe completely reimagines the original color for something new.



17, 14.497, 20.546



21, 22.405, 22.396



20, 10.250, 256.273



10, 1.575, 16.866



17, 46.513, 33.468

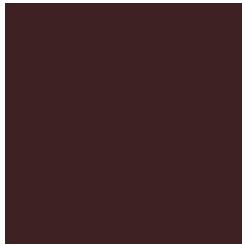


46, 92.681, 38.856



# Previews

## White Background



This preview shows how the CIELCh color 17, 14.498, 20.542 looks on a white background.

## Color Contrast Check

Large Text (above 18pt) WCAG AA ✓ Pass

Any Text WCAG AA ✓ Pass

Large Text (above 18pt) WCAG AAA ✓ Pass

Any Text WCAG AAA ✓ Pass

# Black Background



## Color Contrast Check

Large Text (above 18pt) WCAG AA × Fail

Any Text WCAG AA × Fail

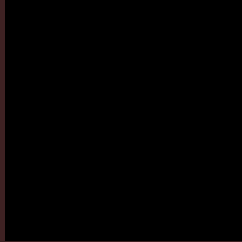
Large Text (above 18pt) WCAG AAA × Fail

Any Text WCAG AAA × Fail

If you want to check with other color combinations, try the [Color Contrast Checker](#).

**CIELCh 17, 14.498, 20.542**

## **Background**



This preview shows how black text looks on a background with the CIELCh color 17, 14.498, 20.542.

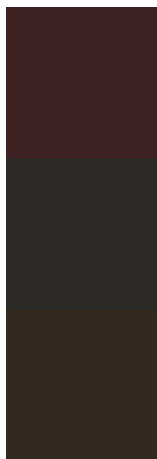


This preview shows how white text looks on a background with the CIELCh color 17, 14.498, 20.542.

# Color Blindness Simulation

Color vision deficiency is a very complex topic, and I could not describe the different causes any better than Wikipedia does, so if you want to learn more, you should check out their [article about color blindness](#).

## Dichromacy



### Original Color

17, 14.498, 20.542

### Protanopia

17, 2.292, 84.215

### Deuteranopia

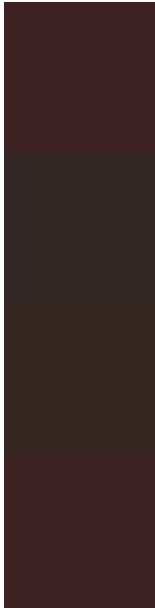
17, 6.397, 68.714



**Tritanopia**  
17, 14.419, 17.853



# Trichromacy



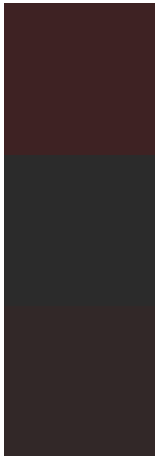
**Original Color**  
17, 14.498, 20.542

**Protanomaly**  
17, 6.102, 27.245

**Deuteranomaly**  
17, 8.625, 44.358

**Tritanomaly**  
17, 14.419, 17.853

# Monochromacy



**Original Color**  
17, 14.498, 20.542

**Achromatopsia**  
18, 0.003, 296.813

**Achromatomaly**  
17, 4.965, 20.526

# CSS Examples

## Text

The CSS property to change the color of the text to CIELCh 17, 14.498, 20.542 is called "color". The color property can be set on classes, ids or directly on the HTML element.

This example shows how text in the color `rgb(62, 34, 35)` looks like.

```
.text, #text, p{  
    color:rgb(62, 34, 35)  
}
```

If you want to add a text shadow in that color use the text-shadow property, you can generate a text shadow directly with our [CSS Text Shadow Generator](#).

Here you see how black text with a 4 pixel rgb(62, 34, 35) colored shadow looks like.

```
.shadow{ text-shadow: 4px 4px 2px rgb(62, 34, 35) }
```

## Border

The CSS property to change the border of an element to CIELCh 17, 14.498, 20.542 is called "border". The border property can be set on classes, ids or directly on the HTML element.

This example shows the color as border, it can be applied via the CSS property "border" or "border-color".

```
.border, #border, table{ border:4px solid rgb(62, 34, 35) }
```

If only the border color should be changed use the property `border-color`.

```
.border{ border-color:rgb(62, 34, 35) }
```

If you want to add a box shadow in that color use:

Here you see how a box with a 4 pixel `rgb(62, 34, 35)` colored shadow looks like.

```
.boxshadow{ -moz-box-shadow:4px 4px 4px  
4px rgb(62, 34, 35); -webkit-box-  
shadow:4px 4px 4px 4px rgb(62, 34, 35);  
box-shadow:4px 4px 4px 4px rgb(62, 34, 35)  
}
```

# Background

The CSS property to change the background color of an element to CIELCh 17, 14.498, 20.542 is called "background". The background property can be set on classes, ids or directly on the HTML element.

```
.background, #background, body{  
background: rgb(62, 34, 35) }
```

If only the background color should be changed can be used:

```
.background{ background-color: rgb(62, 34,  
35) }
```

This example shows the color as background, it is applied via the CSS property "background".

To optimize and compress your CSS code, you can use our [online CSS compressor and optimizer](#) based on csstidy. If you want to create a linear or radial gradient as background or border, check our [CSS Gradient Generator](#).

# Hey! You found this booklet interesting? Support Converting Colors with the new Membership Option!

The pro membership hides all ads, plus gives you double the colors in the color bucket, and more awesome pro features!

**[Learn more, Memberships starting at \\$2.50/m!](#)**

**Follow me  
on Twitter!**

@ConvertingColor