

Converting Colors

CIELCh(17, 15.933, 32.961)

Have a look what the booklet for
CIELCh(17, 15.933, 32.961) contains.

CIELCh(17, 15.933, 32.961)	3
<i>Conversions</i>	4
<i>Details</i>	6
<i>Harmonies</i>	11
<i>Previews</i>	20
<i>Color Blindness Simulation</i>	23
<i>CSS Examples</i>	26

Color

CIELCh(17, 15.933, 32.961)

Conversions

Conversions Part 1

Format	Color
Hex	3F221E
RGB	63, 34, 30
RGB Percent	25%, 13%, 12%
CMY	0.7526, 0.8664, 0.8821
CMYK	0.00, 0.46, 0.52, 0.75
HSL	7°, 35%, 18%
HSV	7°, 52%, 25%
XYZ	2.8651, 2.3023, 1.5267
YIQ	42.2150, 18.5680, 4.9040

Conversions

Conversions Part 2

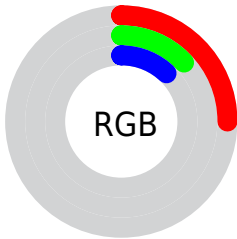
Format	Color
R_{YB}	63, 35, 30
Decimal	4137502
CIE _{Lab}	17.00, 13.37, 8.67
CIE _{LCh}	17, 15.933, 32.961
Yxy	2.3023, 0.4280, 0.3439
Android (android.graphics.Color)	4282327582 (0xFF3F221E)
YUV	42.2150, -6.0220, 18.2284
Hunter-Lab	15.1734, 7.1514, 4.6557

Details

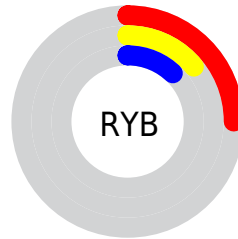
The CIELCh color **17, 15.933, 32.961** is a dark color, and the websafe version is hex **663333**. A complement of this color would be **23, 11.251, 211.478**, and the grayscale version is **17, 0.003, 296.813**.

A 20% lighter version of the original color is **37, 15.627, 32.777**, and **0, 0.277, 19.405** is the 20% darker color. If you saturate the color by 10%, you get **15, 19.599, 33.976**, and if you desaturate by 10%, it is **19, 12.450, 32.194**.

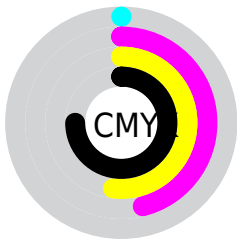
Distribution



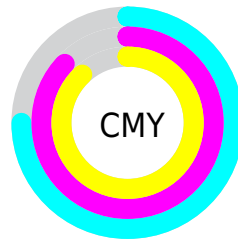
- Red (25%)
- Green (13%)
- Blue (12%)



- Red (25%)
- Yellow (14%)
- Blue (12%)



- Cyan (0%)
- Magenta (46%)
- Yellow (52%)
- Black (75%)



- Cyan (75%)
- Magenta (87%)
- Yellow (88%)


Brightness & Saturation Gradients

These gradients show how the CIELCh color 17, 15.933, 32.961 changes by changing the brightness by 10 percent. The first figure shows a shift by +10% for each color and the second figure -10%.

Similar to the brightness gradients but the following saturation gradients show a change of the CIELCh color 17, 15.933, 32.961 by changing the saturation by 10% instead.

 17, 15.933, 32.961

 17, 15.933, 32.961

 100, 15.933,
32.961

 7, 15.933, 32.961

 37, 15.933, 32.961

 0, 15.933, 32.961

 47, 15.933, 32.961

 57, 15.933, 32.961

 67, 15.933, 32.961

 77, 15.933, 32.961

 87, 15.933, 32.961

 97, 15.933, 32.961

■ 17, 15.933, 32.961

■ 17, 15.933, 32.961

■ 15, 19.599, 33.976

■ 19, 12.450, 32.194

■ 14, 23.257, 34.734

■ 21, 9.174, 31.624

■ 13, 26.354, 34.030

■ 22, 6.110, 31.212

■ 11, 28.967, 33.092

■ 24, 3.253, 30.909

■ 11, 30.823, 32.931

■ 26, 0.592, 30.406

■ 28, 1.887, 210.866

■ 30, 4.201, 210.772

■ 32, 6.366, 210.778

■ 34, 8.398, 210.831

Harmonies

Complementary

The Complementary color scheme is a pair of colors which are on the opposite of each other on the color wheel.



17, 15.933, 32.961



23, 11.251, 211.478

Rectangle

The Rectangle color scheme consists of four colors that form a rectangle on the color wheel.



17, 15.933, 32.961



17, 15.933, 82.961



17, 15.933, 212.961



17, 15.933, 262.961

Sweetspot

The Sweet Spot groups the original color and five complimentary colors.



17, 15.932, 32.965



31, 5.315, 31.032



17, 24.124, 330.491



14, 3.535, 31.050



69, 0.009, 296.813



16, 0.003, 296.813

Same Dimension

The Same Dimension uses a secret algorithm to generate beautiful new colors.



17, 15.932, 32.965



21, 24.796, 34.379



22, 15.243, 80.820



11, 1.408, 30.796



19, 45.401, 38.586



47, 92.126, 41.361

Inverse Universe

The Inverse Universe completely reimagines the original color for something new.



23, 11.251, 211.478



29, 15.692, 212.244



17, 14.657, 275.173



11, 1.344, 210.841



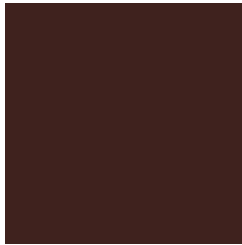
32, 21.366, 216.969



72, 39.601, 218.865

Previews

White Background



This preview shows how the CIE LCh color 17, 15.933, 32.961 looks on a white background.

Color Contrast Check

Large Text (above 18pt) WCAG AA ✓ Pass

Any Text WCAG AA ✓ Pass

Large Text (above 18pt) WCAG AAA ✓ Pass

Any Text WCAG AAA ✓ Pass

Black Background



This preview shows how the CIE LCh color 17, 15.933, 32.961 looks on a black background.

Color Contrast Check

Large Text (above 18pt) WCAG AA × Fail

Any Text WCAG AA × Fail

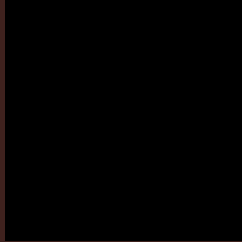
Large Text (above 18pt) WCAG AAA × Fail

Any Text WCAG AAA × Fail

If you want to check with other color combinations, try the [Color Contrast Checker](#).

CIELCh 17, 15.933, 32.961

Background



This preview shows how black text looks on a background with the CIELCh color 17, 15.933, 32.961.



This preview shows how white text looks on a background with the CIELCh color 17, 15.933, 32.961.

Color Blindness Simulation

Color vision deficiency is a very complex topic, and I could not describe the different causes any better than Wikipedia does, so if you want to learn more, you should check out their [article about color blindness](#).

Dichromacy



Original Color

17, 15.933, 32.961

Protanopia

17, 5.738, 93.241

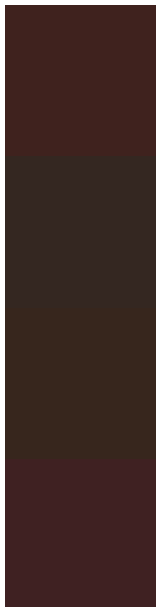
Deuteranopia

17, 9.931, 75.494



Tritanopia
17, 15.452, 16.086

Trichromacy



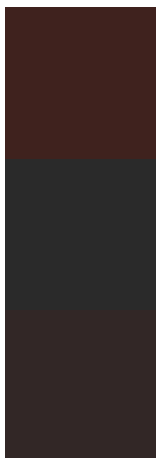
Original Color
17, 15.933, 32.961

Protanomaly
17, 8.046, 51.473

Deuteranomaly
17, 11.246, 54.193

Tritanomaly
17, 15.607, 21.101

Monochromacy



Original Color
17, 15.933, 32.961

Achromatopsia
17, 0.003, 296.813

Achromatomaly
17, 5.588, 27.730

CSS Examples

Text

The CSS property to change the color of the text to CIELCh 17, 15.933, 32.961 is called "color". The color property can be set on classes, ids or directly on the HTML element.

This example shows how text in the color `rgb(63, 34, 30)` looks like.

```
.text, #text, p{  
    color:rgb(63, 34, 30)  
}
```

If you want to add a text shadow in that color use the text-shadow property, you can generate a text shadow directly with our [CSS Text Shadow Generator](#).

Here you see how black text with a 4 pixel rgb(63, 34, 30) colored shadow looks like.

```
.shadow{ text-shadow: 4px 4px 2px rgb(63, 34, 30) }
```

Border

The CSS property to change the border of an element to CIELCh 17, 15.933, 32.961 is called "border". The border property can be set on classes, ids or directly on the HTML element.

This example shows the color as border, it can be applied via the CSS property "border" or "border-color".

```
.border, #border, table{ border:4px solid rgb(63, 34, 30) }
```

If only the border color should be changed use the property `border-color`.

```
.border{ border-color:rgb(63, 34, 30) }
```

If you want to add a box shadow in that color use:

Here you see how a box with a 4 pixel `rgb(63, 34, 30)` colored shadow looks like.

```
.boxshadow{ -moz-box-shadow:4px 4px 4px  
4px rgb(63, 34, 30); -webkit-box-  
shadow:4px 4px 4px 4px rgb(63, 34, 30);  
box-shadow:4px 4px 4px 4px rgb(63, 34, 30)  
}
```

Background

The CSS property to change the background color of an element to CIELCh 17, 15.933, 32.961 is called "background". The background property can be set on classes, ids or directly on the HTML element.

```
.background, #background, body{  
background: rgb(63, 34, 30) }
```

If only the background color should be changed can be used:

```
.background{ background-color: rgb(63, 34,  
30) }
```

This example shows the color as background, it is applied via the CSS property "background".

To optimize and compress your CSS code, you can use our [online CSS compressor and optimizer](#) based on csstidy. If you want to create a linear or radial gradient as background or border, check our [CSS Gradient Generator](#).

Hey! You found this booklet
interesting? Support Converting
Colors with the new Membership
Option!

The pro membership hides all ads, plus gives you
double the colors in the color bucket, and more
awesome pro features!

[Learn more, Memberships starting at \\$2.50/m!](#)

**Follow me
on Twitter!**

@ConvertingColor