

Converting Colors

CIELCh(17, 15.941, 29.855)

Have a look what the booklet for
CIELCh(17, 15.941, 29.855) contains.

CIELCh(17, 15.690, 30.658)	3
<i>Conversions</i>	4
<i>Details</i>	6
<i>Harmonies</i>	11
<i>Previews</i>	20
<i>Color Blindness Simulation</i>	23
<i>CSS Examples</i>	26

Color

CIELCh(17, 15.690, 30.658)

Conversions

Conversions Part 1

Format	Color
Hex	3F221F
RGB	63, 34, 31
RGB Percent	25%, 13%, 12%
CMY	0.7528, 0.8666, 0.8783
CMYK	0.00, 0.46, 0.51, 0.75
HSL	6°, 34%, 18%
HSV	6°, 51%, 25%
XYZ	2.8722, 2.3023, 1.5911
YIQ	42.3290, 18.2470, 5.2150

Conversions

Conversions Part 2

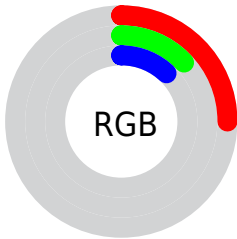
Format	Color
RYB	63, 34, 31
Decimal	4137503
CIELab	17.00, 13.50, 8.00
CIElCh	17, 15.690, 30.658
Yxy	2.3023, 0.4245, 0.3403
Android (android.graphics.Color)	4282327583 (0xFF3F221F)
YUV	42.3290, -5.5852, 18.1285
Hunter-Lab	15.1734, 7.2350, 4.4043

Details

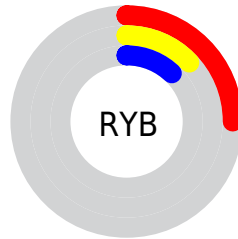
The CIELCh color **17, 15.690, 30.658** is a dark color, and the websafe version is hex **663333**. A complement of this color would be **23, 11.231, 207.925**, and the grayscale version is **17, 0.003, 296.813**.

A 20% lighter version of the original color is **37, 15.441, 30.643**, and **0, 0.277, 19.405** is the 20% darker color. If you saturate the color by 10%, you get **15, 19.378, 31.817**, and if you desaturate by 10%, it is **19, 12.180, 29.768**.

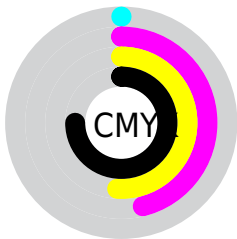
Distribution



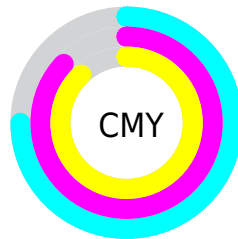
- Red (25%)
- Green (13%)
- Blue (12%)



- Red (25%)
- Yellow (13%)
- Blue (12%)



- Cyan (0%)
- Magenta (46%)
- Yellow (51%)
- Black (75%)



- Cyan (75%)
- Magenta (87%)
- Yellow (88%)


Brightness & Saturation Gradients

These gradients show how the CIELCh color 17, 15.690, 30.658 changes by changing the brightness by 10 percent. The first figure shows a shift by +10% for each color and the second figure -10%.

Similar to the brightness gradients but the following saturation gradients show a change of the CIELCh color 17, 15.690, 30.658 by changing the saturation by 10% instead.

 17, 15.690, 30.658

 17, 15.690, 30.658

 100, 15.690,
30.658

 7, 15.690, 30.658

 37, 15.690, 30.658

 0, 15.690, 30.658

 47, 15.690, 30.658

 57, 15.690, 30.658

 67, 15.690, 30.658

 77, 15.690, 30.658

 87, 15.690, 30.658

 97, 15.690, 30.658

■ 17, 15.690, 30.658

■ 17, 15.690, 30.658

■ 15, 19.378, 31.817

■ 19, 12.180, 29.768

■ 14, 23.107, 32.919

■ 21, 8.874, 29.089

■ 12, 26.311, 32.580

■ 23, 5.779, 28.576

■ 11, 28.966, 31.780

■ 25, 2.891, 28.174

■ 10, 31.245, 31.542

■ 27, 0.201, 26.783

■ 29, 2.307, 207.944

■ 31, 4.647, 207.788

■ 33, 6.838, 207.718

■ 35, 8.894, 207.696

Harmonies

Complementary

The Complementary color scheme is a pair of colors which are on the opposite of each other on the color wheel.



17, 15.690, 30.658



23, 11.231, 207.925

Rectangle

The Rectangle color scheme consists of four colors that form a rectangle on the color wheel.



17, 15.690, 30.658



17, 15.690, 80.658



17, 15.690, 210.658



17, 15.690, 260.658

Sweetspot

The Sweet Spot groups the original color and five complimentary colors.



17, 15.689, 30.662



31, 5.078, 28.361



17, 23.979, 329.303



14, 3.414, 28.390



69, 0.009, 296.813



16, 0.003, 296.813

Same Dimension

The Same Dimension uses a secret algorithm to generate beautiful new colors.



17, 15.689, 30.662



21, 24.318, 32.201



22, 14.463, 77.981



10, 1.440, 28.079



18, 45.781, 37.735



47, 92.752, 40.922

Inverse Universe

The Inverse Universe completely reimagines the original color for something new.



23, 11.231, 207.925



30, 15.702, 208.348



18, 13.595, 271.871



11, 1.375, 207.950



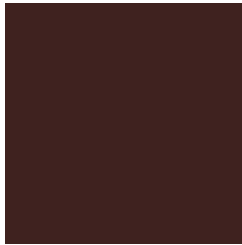
33, 21.781, 211.784



74, 40.336, 213.179

Previews

White Background



This preview shows how the CIELCh color 17, 15.690, 30.658 looks on a white background.

Color Contrast Check

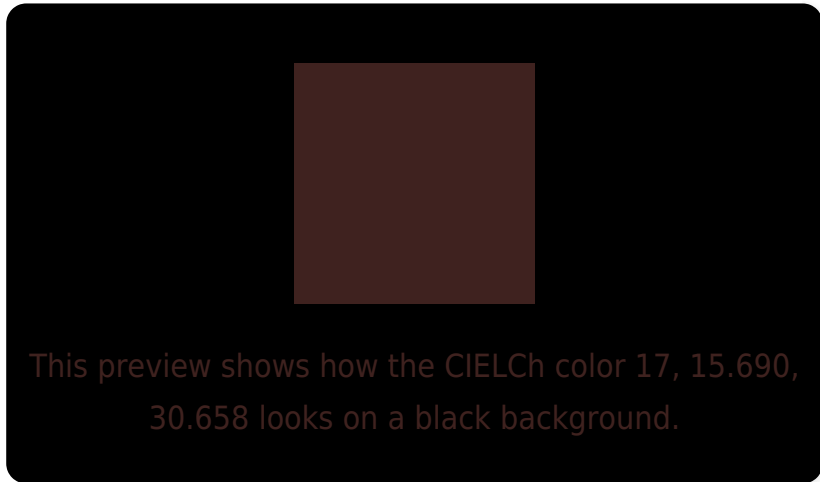
Large Text (above 18pt) WCAG AA ✓ Pass

Any Text WCAG AA ✓ Pass

Large Text (above 18pt) WCAG AAA ✓ Pass

Any Text WCAG AAA ✓ Pass

Black Background



Color Contrast Check

Large Text (above 18pt) WCAG AA × Fail

Any Text WCAG AA × Fail

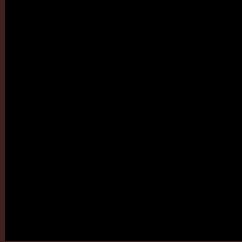
Large Text (above 18pt) WCAG AAA × Fail

Any Text WCAG AAA × Fail

If you want to check with other color combinations, try the [Color Contrast Checker](#).

CIELCh 17, 15.690, 30.658

Background



This preview shows how black text looks on a background with the CIELCh color 17, 15.690, 30.658.



This preview shows how white text looks on a background with the CIELCh color 17, 15.690, 30.658.

Color Blindness Simulation

Color vision deficiency is a very complex topic, and I could not describe the different causes any better than Wikipedia does, so if you want to learn more, you should check out their [article about color blindness](#).

Dichromacy



Original Color

17, 15.690, 30.658

Protanopia

17, 5.073, 91.451

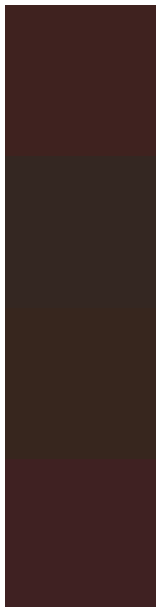
Deuteranopia

17, 9.340, 73.560



Tritanopia
17, 15.452, 16.086

Trichromacy



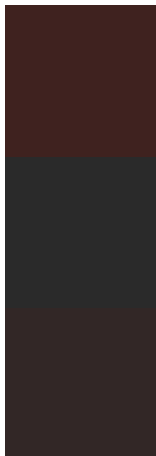
Original Color
17, 15.690, 30.658

Protanomaly
17, 7.654, 47.385

Deuteranomaly
17, 10.806, 51.513

Tritanomaly
17, 15.607, 21.101

Monochromacy



Original Color
17, 15.690, 30.658

Achromatopsia
17, 0.003, 296.813

Achromatomaly
17, 5.588, 27.730

CSS Examples

Text

The CSS property to change the color of the text to CIELCh 17, 15.690, 30.658 is called "color". The color property can be set on classes, ids or directly on the HTML element.

This example shows how text in the color `rgb(63, 34, 31)` looks like.

```
.text, #text, p{  
    color:rgb(63, 34, 31)  
}
```

If you want to add a text shadow in that color use the text-shadow property, you can generate a text shadow directly with our [CSS Text Shadow Generator](#).

Here you see how black text with a 4 pixel rgb(63, 34, 31) colored shadow looks like.

```
.shadow{ text-shadow: 4px 4px 2px rgb(63, 34, 31) }
```

Border

The CSS property to change the border of an element to CIELCh 17, 15.690, 30.658 is called "border". The border property can be set on classes, ids or directly on the HTML element.

This example shows the color as border, it can be applied via the CSS property "border" or "border-color".

```
.border, #border, table{ border:4px solid rgb(63, 34, 31) }
```

If only the border color should be changed use the property `border-color`.

```
.border{ border-color:rgb(63, 34, 31) }
```

If you want to add a box shadow in that color use:

Here you see how a box with a 4 pixel `rgb(63, 34, 31)` colored shadow looks like.

```
.boxshadow{ -moz-box-shadow:4px 4px 4px  
4px rgb(63, 34, 31); -webkit-box-  
shadow:4px 4px 4px 4px rgb(63, 34, 31);  
box-shadow:4px 4px 4px 4px rgb(63, 34, 31)  
}
```

Background

The CSS property to change the background color of an element to CIELCh 17, 15.690, 30.658 is called "background". The background property can be set on classes, ids or directly on the HTML element.

```
.background, #background, body{  
background: rgb(63, 34, 31) }
```

If only the background color should be changed can be used:

```
.background{ background-color: rgb(63, 34,  
31) }
```

This example shows the color as background, it is applied via the CSS property "background".

To optimize and compress your CSS code, you can use our [online CSS compressor and optimizer](#) based on csstidy. If you want to create a linear or radial gradient as background or border, check our [CSS Gradient Generator](#).

Hey! You found this booklet interesting? Support Converting Colors with the new Membership Option!

The pro membership hides all ads, plus gives you double the colors in the color bucket, and more awesome pro features!

[Learn more, Memberships starting at \\$2.50/m!](#)

**Follow me
on Twitter!**

@ConvertingColor