

Converting Colors

CIELCh(17, 23.048, 24.291)

Have a look what the booklet for
CIELCh(17, 23.048, 24.291) contains.

CIELCh(17, 23.240, 24.535)	3
<i>Conversions</i>	4
<i>Details</i>	6
<i>Harmonies</i>	11
<i>Previews</i>	20
<i>Color Blindness Simulation</i>	23
<i>CSS Examples</i>	26

Color

CIELCh(17, 23.240, 24.535)

Conversions

Conversions Part 1	
Format	Color
Hex	481C1D
RGB	72, 28, 29
RGB Percent	28%, 11%, 11%
CMY	0.7174, 0.8900, 0.8861
CMYK	0.00, 0.61, 0.60, 0.72
HSL	359°, 44%, 20%
HSV	359°, 61%, 28%
XYZ	3.3163, 2.3023, 1.4354
YIQ	41.2700, 25.9030, 9.6390

Conversions

Conversions Part 2

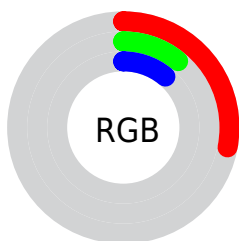
Format	Color
RYB	72, 28, 29
Decimal	4725789
CIELab	17.00, 21.14, 9.65
CIELCh	17, 23.240, 24.535
Yxy	2.3023, 0.4701, 0.3264
Android (android.graphics.Color)	4282915869 (0xFF481C1D)
YUV	41.2700, -6.0491, 26.9502
Hunter-Lab	15.1734, 12.4589, 5.0126

Details

The CIELCh color **17, 23.240, 24.535** is a dark color, and the websafe version is hex **663333**. A complement of this color would be **28, 15.808, 194.637**, and the grayscale version is **17, 0.003, 296.813**.

A 20% lighter version of the original color is **37, 23.290, 24.602**, and **1, 5.949, 19.405** is the 20% darker color. If you saturate the color by 10%, you get **15, 27.500, 26.918**, and if you desaturate by 10%, it is **19, 18.994, 22.629**.

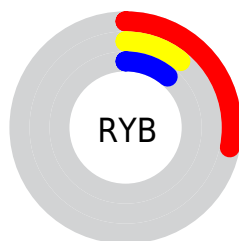
Distribution



Red (28%)

Green (11%)

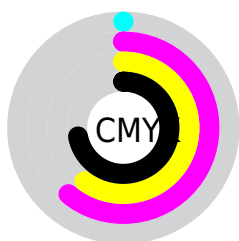
Blue (11%)



Red (28%)

Yellow (11%)

Blue (11%)

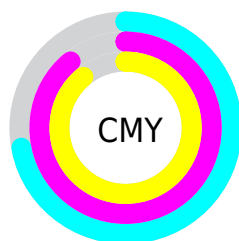


Cyan (0%)

Magenta (61%)

Yellow (60%)

Black (72%)



Cyan (72%)

Magenta (89%)

Yellow (89%)


Brightness & Saturation Gradients

These gradients show how the CIELCh color 17, 23.240, 24.535 changes by changing the brightness by 10 percent. The first figure shows a shift by +10% for each color and the second figure -10%.

Similar to the brightness gradients but the following saturation gradients show a change of the CIELCh color 17, 23.240, 24.535 by changing the saturation by 10% instead.

 17, 23.240, 24.535

 17, 23.240, 24.535

 100, 23.240,
24.535

 7, 23.240, 24.535

 37, 23.240, 24.535

 0, 23.240, 24.535

 47, 23.240, 24.535

 57, 23.240, 24.535

 67, 23.240, 24.535

 77, 23.240, 24.535

 87, 23.240, 24.535

 97, 23.240, 24.535

■ 17, 23.240, 24.535

■ 17, 23.240, 24.535

■ 15, 27.500, 26.918

■ 19, 18.994, 22.629

■ 14, 31.318, 28.697

■ 21, 14.859, 21.114

■ 13, 34.292, 29.238

■ 23, 10.899, 19.909

■ 12, 36.927, 29.113

■ 26, 7.151, 18.942

■ 28, 3.631, 18.140

■ 30, 0.338, 16.807

■ 33, 2.739, 197.179

■ 35, 5.617, 196.707

■ 38, 8.312, 196.339

Harmonies

Complementary

The Complementary color scheme is a pair of colors which are on the opposite of each other on the color wheel.



17, 23.240, 24.535



28, 15.808, 194.637

Rectangle

The Rectangle color scheme consists of four colors that form a rectangle on the color wheel.



17, 23.240, 24.535



17, 23.240, 74.535



17, 23.240, 204.535



17, 23.240, 254.535

Sweetspot

The Sweet Spot groups the original color and five complimentary colors.



17, 23.239, 24.538



35, 7.581, 18.742



18, 33.144, 326.212



16, 5.342, 18.883



72, 0.009, 296.813



20, 0.004, 296.813

Same Dimension

The Same Dimension uses a secret algorithm to generate beautiful new colors.



17, 23.239, 24.538



21, 35.516, 28.258



22, 19.029, 65.284



13, 1.800, 17.951



19, 48.937, 34.736



47, 94.823, 39.285

Inverse Universe

The Inverse Universe completely reimagines the original color for something new.



17, 23.239, 24.538



21, 35.516, 28.258



21, 15.651, 262.373



13, 1.800, 17.951



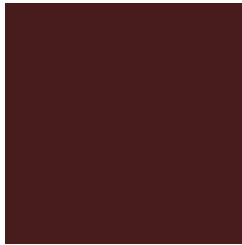
19, 48.937, 34.736



47, 94.823, 39.285

Previews

White Background



This preview shows how the CIELCh color 17, 23.240, 24.535 looks on a white background.

Color Contrast Check

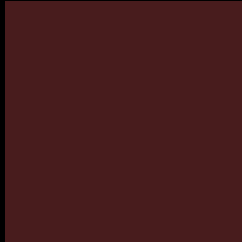
Large Text (above 18pt) WCAG AA ✓ Pass

Any Text WCAG AA ✓ Pass

Large Text (above 18pt) WCAG AAA ✓ Pass

Any Text WCAG AAA ✓ Pass

Black Background



This preview shows how the CIELCh color 17, 23.240, 24.535 looks on a black background.

Color Contrast Check

Large Text (above 18pt) WCAG AA × Fail

Any Text WCAG AA × Fail

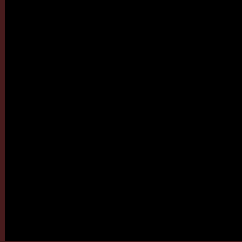
Large Text (above 18pt) WCAG AAA × Fail

Any Text WCAG AAA × Fail

If you want to check with other color combinations, try the [Color Contrast Checker](#).

CIELCh 17, 23.240, 24.535

Background



This preview shows how black text looks on a background with the CIELCh color 17, 23.240, 24.535.



This preview shows how white text looks on a background with the CIELCh color 17, 23.240, 24.535.

Color Blindness Simulation

Color vision deficiency is a very complex topic, and I could not describe the different causes any better than Wikipedia does, so if you want to learn more, you should check out their [article about color blindness](#).

Dichromacy



Original Color

17, 23.240, 24.535

Protanopia

17, 5.603, 98.322

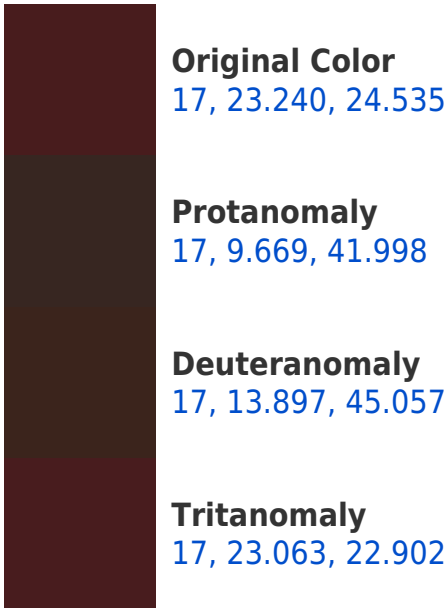
Deuteranopia

17, 11.431, 76.322

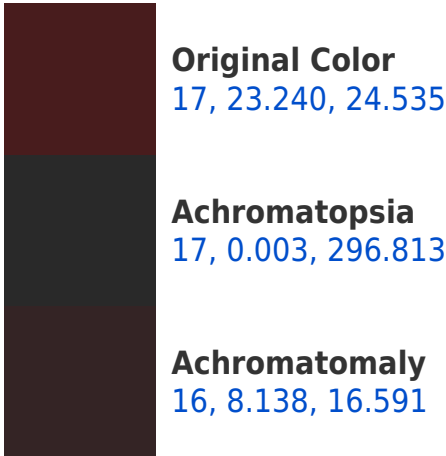


Tritanopia
17, 23.063, 22.902

Trichromacy



Monochromacy



CSS Examples

Text

The CSS property to change the color of the text to CIELCh 17, 23.240, 24.535 is called "color". The color property can be set on classes, ids or directly on the HTML element.

This example shows how text in the color `rgb(72, 28, 29)` looks like.

```
.text, #text, p{  
    color:rgb(72, 28, 29)  
}
```

If you want to add a text shadow in that color use the text-shadow property, you can generate a text shadow directly with our [CSS Text Shadow Generator](#).

Here you see how black text with a 4 pixel rgb(72, 28, 29) colored shadow looks like.

```
.shadow{ text-shadow: 4px 4px 2px rgb(72, 28, 29) }
```

Border

The CSS property to change the border of an element to CIELCh 17, 23.240, 24.535 is called "border". The border property can be set on classes, ids or directly on the HTML element.

This example shows the color as border, it can be applied via the CSS property "border" or "border-color".

```
.border, #border, table{ border:4px solid rgb(72, 28, 29) }
```

If only the border color should be changed use the property border-color.

```
.border{ border-color:rgb(72, 28, 29) }
```

If you want to add a box shadow in that color use:

Here you see how a box with a 4 pixel rgb(72, 28, 29) colored shadow looks like.

```
.boxshadow{ -moz-box-shadow:4px 4px 4px  
4px rgb(72, 28, 29); -webkit-box-  
shadow:4px 4px 4px 4px rgb(72, 28, 29);  
box-shadow:4px 4px 4px 4px rgb(72, 28, 29)  
}
```

Background

The CSS property to change the background color of an element to CIELCh 17, 23.240, 24.535 is called "background". The background property can be set on classes, ids or directly on the HTML element.

```
.background, #background, body{  
background: rgb(72, 28, 29) }
```

If only the background color should be changed can be used:

```
.background{ background-color: rgb(72, 28,  
29) }
```

This example shows the color as background, it is applied via the CSS property "background".

To optimize and compress your CSS code, you can use our [online CSS compressor and optimizer](#) based on csstidy. If you want to create a linear or radial gradient as background or border, check our [CSS Gradient Generator](#).

Hey! You found this booklet
interesting? Support Converting
Colors with the new Membership
Option!

The pro membership hides all ads, plus gives you
double the colors in the color bucket, and more
awesome pro features!

[Learn more, Memberships starting at \\$2.50/m!](#)

**Follow me
on Twitter!**

@ConvertingColor