

Converting Colors

CIELCh(17, 23.798, 29.106)

Have a look what the booklet for
CIELCh(17, 23.798, 29.106) contains.

CIELCh(17, 23.896, 29.243)	3
<i>Conversions</i>	4
<i>Details</i>	6
<i>Harmonies</i>	11
<i>Previews</i>	20
<i>Color Blindness Simulation</i>	23
<i>CSS Examples</i>	26

Color

CIELCh(17, 23.896, 29.243)

Conversions

Conversions Part 1

Format	Color
Hex	481C1A
RGB	72, 28, 26
RGB Percent	28%, 11%, 10%
CMY	0.7167, 0.8894, 0.8973
CMYK	0.00, 0.61, 0.64, 0.72
HSL	3°, 47%, 19%
HSV	3°, 64%, 28%
XYZ	3.2986, 2.3023, 1.2588
YIQ	40.9280, 26.8660, 8.7060

Conversions

Conversions Part 2

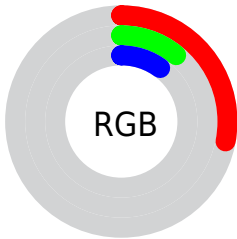
Format	Color
RYB	72, 28, 26
Decimal	4725786
CIELab	17.00, 20.85, 11.67
CIELCh	17, 23.896, 29.243
Yxy	2.3023, 0.4809, 0.3356
Android (android.graphics.Color)	4282915866 (0xFF481C1A)
YUV	40.9280, -7.3595, 27.2501
Hunter-Lab	15.1734, 12.2508, 5.7028

Details

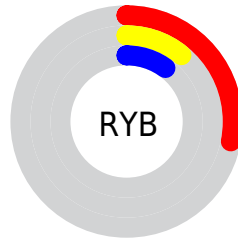
The CIELCh color **17, 23.896, 29.243** is a dark color, and the websafe version is hex **663333**. A complement of this color would be **27, 15.403, 202.028**, and the grayscale version is **17, 0.003, 296.813**.

A 20% lighter version of the original color is **37, 24.234, 28.839**, and **1, 5.526, 19.405** is the 20% darker color. If you saturate the color by 10%, you get **15, 28.202, 31.165**, and if you desaturate by 10%, it is **19, 19.607, 27.573**.

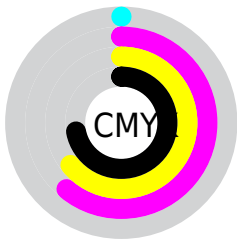
Distribution



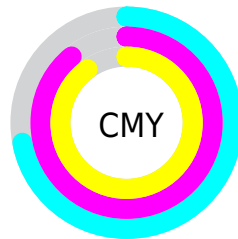
- Red (28%)
- Green (11%)
- Blue (10%)



- Red (28%)
- Yellow (11%)
- Blue (10%)



- Cyan (0%)
- Magenta (61%)
- Yellow (64%)
- Black (72%)



- Cyan (72%)
- Magenta (89%)
- Yellow (90%)


Brightness & Saturation Gradients

These gradients show how the CIELCh color 17, 23.896, 29.243 changes by changing the brightness by 10 percent. The first figure shows a shift by +10% for each color and the second figure -10%.

Similar to the brightness gradients but the following saturation gradients show a change of the CIELCh color 17, 23.896, 29.243 by changing the saturation by 10% instead.

 17, 23.896, 29.243

 17, 23.896, 29.243

 100, 23.896,
29.243

 7, 23.896, 29.243

 37, 23.896, 29.243

 0, 23.896, 29.243

 47, 23.896, 29.243

 57, 23.896, 29.243

 67, 23.896, 29.243

 77, 23.896, 29.243

 87, 23.896, 29.243

 97, 23.896, 29.243

■ 17, 23.896, 29.243

■ 17, 23.896, 29.243

■ 15, 28.202, 31.165

■ 19, 19.607, 27.573

■ 14, 31.817, 31.785

■ 21, 15.469, 26.254

■ 13, 34.675, 31.904

■ 23, 11.536, 25.225

■ 12, 36.455, 31.930

■ 25, 7.835, 24.423

■ 27, 4.375, 23.786

■ 30, 1.150, 23.145

■ 32, 1.852, 203.163

■ 35, 4.650, 202.799

■ 37, 7.263, 202.568

Harmonies

Complementary

The Complementary color scheme is a pair of colors which are on the opposite of each other on the color wheel.



17, 23.896, 29.243



27, 15.403, 202.028

Rectangle

The Rectangle color scheme consists of four colors that form a rectangle on the color wheel.



17, 23.896, 29.243



17, 23.896, 79.243



17, 23.896, 209.243



17, 23.896, 259.243

Sweetspot

The Sweet Spot groups the original color and five complimentary colors.



17, 23.895, 29.246



35, 7.711, 24.152



18, 33.844, 328.343



16, 5.382, 24.254



72, 0.009, 296.813



20, 0.004, 296.813

Same Dimension

The Same Dimension uses a secret algorithm to generate beautiful new colors.



17, 23.895, 29.246



21, 36.642, 32.575



23, 20.288, 71.473



13, 1.724, 23.489



19, 48.739, 36.872



48, 95.203, 40.357

Inverse Universe

The Inverse Universe completely reimagines the original color for something new.



27, 15.403, 202.028



35, 20.855, 202.248



19, 17.847, 270.558



14, 1.642, 203.027



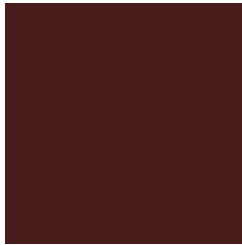
36, 23.754, 203.160



79, 43.225, 203.700

Previews

White Background



This preview shows how the CIE LCh color 17, 23.896, 29.243 looks on a white background.

Color Contrast Check

Large Text (above 18pt) WCAG AA ✓ Pass

Any Text WCAG AA ✓ Pass

Large Text (above 18pt) WCAG AAA ✓ Pass

Any Text WCAG AAA ✓ Pass

Black Background



Color Contrast Check

Large Text (above 18pt) WCAG AA × Fail

Any Text WCAG AA × Fail

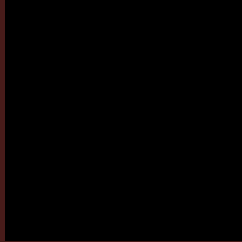
Large Text (above 18pt) WCAG AAA × Fail

Any Text WCAG AAA × Fail

If you want to check with other color combinations, try the [Color Contrast Checker](#).

CIELCh 17, 23.896, 29.243

Background



This preview shows how black text looks on a background with the CIELCh color 17, 23.896, 29.243.

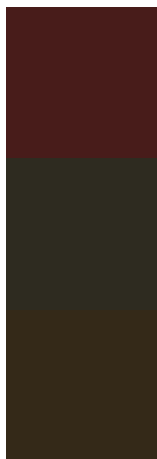


This preview shows how white text looks on a background with the CIELCh color 17, 23.896, 29.243.

Color Blindness Simulation

Color vision deficiency is a very complex topic, and I could not describe the different causes any better than Wikipedia does, so if you want to learn more, you should check out their [article about color blindness](#).

Dichromacy



Original Color

17, 23.896, 29.243

Protanopia

18, 7.724, 96.608

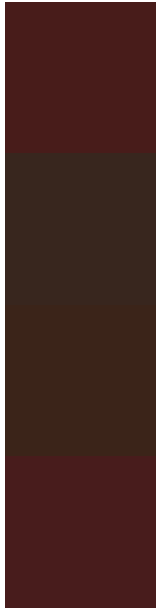
Deuteranopia

17, 13.252, 80.029



Tritanopia
17, 23.240, 24.535

Trichromacy



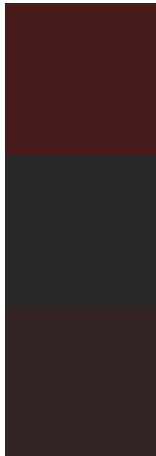
Original Color
17, 23.896, 29.243

Protanomaly
17, 11.284, 50.175

Deuteranomaly
17, 15.133, 51.375

Tritanomaly
17, 23.439, 26.138

Monochromacy



Original Color
17, 23.896, 29.243

Achromatopsia
17, 0.003, 296.813

Achromatomaly
16, 8.182, 21.427

CSS Examples

Text

The CSS property to change the color of the text to CIELCh 17, 23.896, 29.243 is called "color". The color property can be set on classes, ids or directly on the HTML element.

This example shows how text in the color `rgb(72, 28, 26)` looks like.

```
.text, #text, p{  
    color:rgb(72, 28, 26)  
}
```

If you want to add a text shadow in that color use the text-shadow property, you can generate a text shadow directly with our [CSS Text Shadow Generator](#).

Here you see how black text with a 4 pixel rgb(72, 28, 26) colored shadow looks like.

```
.shadow{ text-shadow: 4px 4px 2px rgb(72, 28, 26) }
```

Border

The CSS property to change the border of an element to CIELCh 17, 23.896, 29.243 is called "border". The border property can be set on classes, ids or directly on the HTML element.

This example shows the color as border, it can be applied via the CSS property "border" or "border-color".

```
.border, #border, table{ border:4px solid rgb(72, 28, 26) }
```

If only the border color should be changed use the property border-color.

```
.border{ border-color:rgb(72, 28, 26) }
```

If you want to add a box shadow in that color use:

Here you see how a box with a 4 pixel rgb(72, 28, 26) colored shadow looks like.

```
.boxshadow{ -moz-box-shadow:4px 4px 4px  
4px rgb(72, 28, 26); -webkit-box-  
shadow:4px 4px 4px 4px rgb(72, 28, 26);  
box-shadow:4px 4px 4px 4px rgb(72, 28, 26)  
}
```

Background

The CSS property to change the background color of an element to CIELCh 17, 23.896, 29.243 is called "background". The background property can be set on classes, ids or directly on the HTML element.

```
.background, #background, body{  
background: rgb(72, 28, 26) }
```

If only the background color should be changed can be used:

```
.background{ background-color: rgb(72, 28,  
26) }
```

This example shows the color as background, it is applied via the CSS property "background".

To optimize and compress your CSS code, you can use our [online CSS compressor and optimizer](#) based on csstidy. If you want to create a linear or radial gradient as background or border, check our [CSS Gradient Generator](#).

Hey! You found this booklet
interesting? Support Converting
Colors with the new Membership
Option!

The pro membership hides all ads, plus gives you
double the colors in the color bucket, and more
awesome pro features!

[Learn more, Memberships starting at \\$2.50/m!](#)

**Follow me
on Twitter!**

@ConvertingColor