

Converting Colors

CIELCh(18, 12.535, 39.353)

Have a look what the booklet for
CIELCh(18, 12.535, 39.353) contains.

CIELCh(18, 12.484, 40.786)	3
<i>Conversions</i>	4
<i>Details</i>	6
<i>Harmonies</i>	11
<i>Previews</i>	20
<i>Color Blindness Simulation</i>	23
<i>CSS Examples</i>	26

Color

CIELCh(18, 12.484, 40.786)

Conversions

Conversions Part 1

Format	Color
Hex	3D2721
RGB	61, 39, 33
RGB Percent	24%, 15%, 13%
CMY	0.7622, 0.8483, 0.8718
CMYK	0.00, 0.36, 0.46, 0.76
HSL	13°, 30%, 18%
HSV	13°, 46%, 24%
XYZ	2.8869, 2.5180, 1.7493
YIQ	44.8940, 15.0380, 2.7980

Conversions

Conversions Part 2

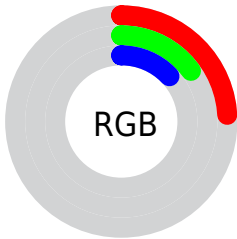
Format	Color
R_{YB}	61, 41, 33
Decimal	4007713
CIE _{Lab}	18.00, 9.45, 8.15
CIE _{LCh}	18, 12.484, 40.786
Yxy	2.5180, 0.4035, 0.3520
Android (android.graphics.Color)	4282197793 (0xFF3D2721)
YUV	44.8940, -5.8637, 14.1250
Hunter-Lab	15.8683, 4.7049, 4.5719

Details

The CIELCh color **18, 12.484, 40.786** is a dark color, and the websafe version is hex **333333**. A complement of this color would be **21, 9.382, 223.741**, and the grayscale version is **18, 0.003, 296.813**.

A 20% lighter version of the original color is **38, 12.704, 40.439**, and **0, 1.109, 19.405** is the 20% darker color. If you saturate the color by 10%, you get **16, 15.735, 41.048**, and if you desaturate by 10%, it is **20, 9.431, 40.676**.

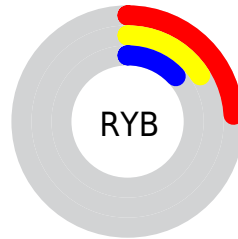
Distribution



Red (24%)

Green (15%)

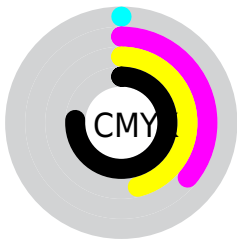
Blue (13%)



Red (24%)

Yellow (16%)

Blue (13%)

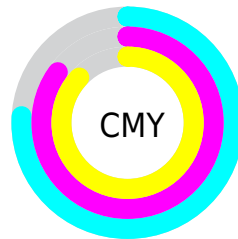


Cyan (0%)

Magenta (36%)

Yellow (46%)

Black (76%)



Cyan (76%)

Magenta (85%)

Yellow (87%)


Brightness & Saturation Gradients

These gradients show how the CIELCh color 18, 12.484, 40.786 changes by changing the brightness by 10 percent. The first figure shows a shift by +10% for each color and the second figure -10%.

Similar to the brightness gradients but the following saturation gradients show a change of the CIELCh color 18, 12.484, 40.786 by changing the saturation by 10% instead.

 18, 12.484, 40.786

 18, 12.484, 40.786

 100, 12.484,
40.786

 8, 12.484, 40.786

 38, 12.484, 40.786

 0, 12.484, 40.786

 48, 12.484, 40.786

 58, 12.484, 40.786

 68, 12.484, 40.786

 78, 12.484, 40.786

 88, 12.484, 40.786

 98, 12.484, 40.786

■ 18, 12.484, 40.786

■ 18, 12.484, 40.786

■ 16, 15.735, 41.048

■ 20, 9.431, 40.676

■ 15, 19.167, 41.450

■ 21, 6.577, 40.676

■ 14, 22.315, 40.771

■ 23, 3.915, 40.761

■ 13, 24.934, 38.943

■ 25, 1.433, 40.846

■ 11, 27.345, 37.554

■ 26, 0.885, 221.518

■ 11, 28.247, 37.247

■ 28, 3.053, 221.625

■ 30, 5.086, 221.921

■ 31, 6.998, 222.259

■ 33, 8.803, 222.618

Harmonies

Complementary

The Complementary color scheme is a pair of colors which are on the opposite of each other on the color wheel.



18, 12.484, 40.786



21, 9.382, 223.741

Rectangle

The Rectangle color scheme consists of four colors that form a rectangle on the color wheel.



18, 12.484, 40.786



18, 12.484, 90.786



18, 12.484, 220.786



18, 12.484, 270.786

Sweetspot

The Sweet Spot groups the original color and five complimentary colors.



18, 12.483, 40.791



31, 4.224, 40.778



17, 19.597, 333.141



14, 2.952, 40.767



69, 0.009, 296.813



16, 0.003, 296.813

Same Dimension

The Same Dimension uses a secret algorithm to generate beautiful new colors.



18, 12.483, 40.791



23, 19.335, 41.097



22, 13.746, 88.579



11, 1.323, 40.842



20, 43.901, 42.360



49, 89.140, 43.656

Inverse Universe

The Inverse Universe completely reimagines the original color for something new.



21, 9.382, 223.741



28, 13.328, 225.019



17, 13.879, 280.275



11, 1.267, 221.517



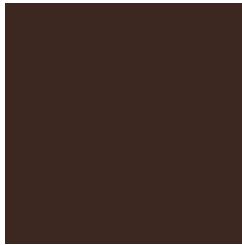
29, 21.237, 235.727



66, 39.953, 239.227

Previews

White Background



This preview shows how the CIELCh color 18, 12.484, 40.786 looks on a white background.

Color Contrast Check

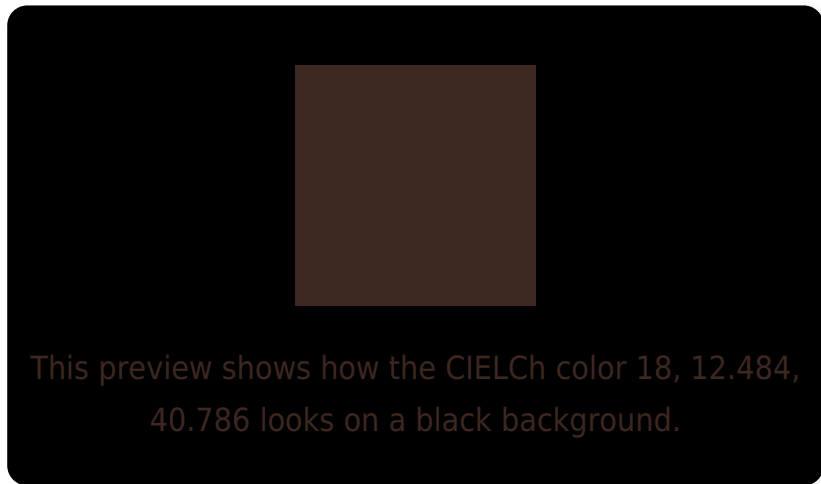
Large Text (above 18pt) WCAG AA ✓ Pass

Any Text WCAG AA ✓ Pass

Large Text (above 18pt) WCAG AAA ✓ Pass

Any Text WCAG AAA ✓ Pass

Black Background



Color Contrast Check

Large Text (above 18pt) WCAG AA × Fail

Any Text WCAG AA × Fail

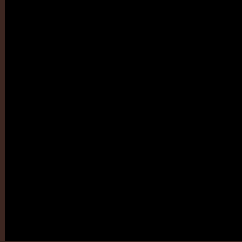
Large Text (above 18pt) WCAG AAA × Fail

Any Text WCAG AAA × Fail

If you want to check with other color combinations, try the [Color Contrast Checker](#).

CIELCh 18, 12.484, 40.786

Background



This preview shows how black text looks on a background with the CIELCh color 18, 12.484, 40.786.

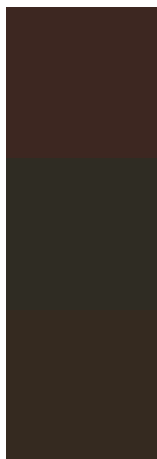


This preview shows how white text looks on a background with the CIELCh color 18, 12.484, 40.786.

Color Blindness Simulation

Color vision deficiency is a very complex topic, and I could not describe the different causes any better than Wikipedia does, so if you want to learn more, you should check out their [article about color blindness](#).

Dichromacy



Original Color

18, 12.484, 40.786

Protanopia

18, 6.362, 94.706

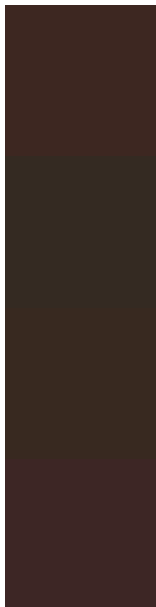
Deuteranopia

18, 9.069, 68.776



Tritanopia
18, 11.642, 15.627

Trichromacy



Original Color

18, 12.484, 40.786

Protanomaly

18, 7.624, 65.872

Deuteranomaly

18, 10.192, 57.551

Tritanomaly

18, 11.882, 25.484

Monochromacy



Original Color

18, 12.484, 40.786

Achromatopsia

18, 0.003, 296.813

Achromatomaly

18, 4.196, 39.173

CSS Examples

Text

The CSS property to change the color of the text to CIELCh 18, 12.484, 40.786 is called "color". The color property can be set on classes, ids or directly on the HTML element.

This example shows how text in the color `rgb(61, 39, 33)` looks like.

```
.text, #text, p{  
    color:rgb(61, 39, 33)  
}
```

If you want to add a text shadow in that color use the text-shadow property, you can generate a text shadow directly with our [CSS Text Shadow Generator](#).

Here you see how black text with a 4 pixel rgb(61, 39, 33) colored shadow looks like.

```
.shadow{ text-shadow: 4px 4px 2px rgb(61, 39, 33) }
```

Border

The CSS property to change the border of an element to CIELCh 18, 12.484, 40.786 is called "border". The border property can be set on classes, ids or directly on the HTML element.

This example shows the color as border, it can be applied via the CSS property "border" or "border-color".

```
.border, #border, table{ border:4px solid rgb(61, 39, 33) }
```

If only the border color should be changed use the property border-color.

```
.border{ border-color:rgb(61, 39, 33) }
```

If you want to add a box shadow in that color use:

Here you see how a box with a 4 pixel rgb(61, 39, 33) colored shadow looks like.

```
.boxshadow{ -moz-box-shadow:4px 4px 4px  
4px rgb(61, 39, 33); -webkit-box-  
shadow:4px 4px 4px 4px rgb(61, 39, 33);  
box-shadow:4px 4px 4px 4px rgb(61, 39, 33)  
}
```

Background

The CSS property to change the background color of an element to CIELCh 18, 12.484, 40.786 is called "background". The background property can be set on classes, ids or directly on the HTML element.

```
.background, #background, body{  
background: rgb(61, 39, 33) }
```

If only the background color should be changed can be used:

```
.background{ background-color: rgb(61, 39,  
33) }
```

This example shows the color as background, it is applied via the CSS property "background".

To optimize and compress your CSS code, you can use our [online CSS compressor and optimizer](#) based on csstidy. If you want to create a linear or radial gradient as background or border, check our [CSS Gradient Generator](#).

Hey! You found this booklet
interesting? Support Converting
Colors with the new Membership
Option!

The pro membership hides all ads, plus gives you
double the colors in the color bucket, and more
awesome pro features!

[Learn more, Memberships starting at \\$2.50/m!](#)

**Follow me
on Twitter!**

@ConvertingColor