

Converting Colors

CIELCh(18, 13.414, 21.241)

Have a look what the booklet for
CIELCh(18, 13.414, 21.241) contains.

CIELCh(18, 13.382, 22.702)	3
<i>Conversions</i>	4
<i>Details</i>	6
<i>Harmonies</i>	11
<i>Previews</i>	20
<i>Color Blindness Simulation</i>	23
<i>CSS Examples</i>	26

Color

CIELCh(18, 13.382, 22.702)

Conversions

Conversions Part 1

Format	Color
Hex	3F2525
RGB	63, 37, 37
RGB Percent	25%, 15%, 15%
CMY	0.7528, 0.8547, 0.8547
CMYK	0.00, 0.41, 0.41, 0.75
HSL	0°, 26%, 20%
HSV	0°, 41%, 25%
XYZ	3.0505, 2.5180, 2.0790
YIQ	44.7740, 15.4960, 5.5120

Conversions

Conversions Part 2

Format	Color
RYB	63, 37, 37
Decimal	4138277
CIELab	18.00, 12.35, 5.16
CIELCh	18, 13.382, 22.702
Yxy	2.5180, 0.3989, 0.3293
Android (android.graphics.Color)	4282328357 (0xFF3F2525)
YUV	44.7740, -3.8326, 15.9842
Hunter-Lab	15.8683, 6.5452, 3.3398

Details

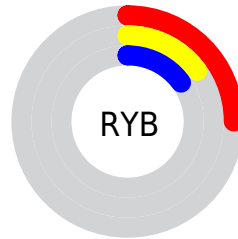
The CIELCh color **18, 13.382, 22.702** is a dark color, and the websafe version is hex **333333**. A complement of this color would be **25, 10.407, 197.682**, and the grayscale version is **18, 0.003, 296.813**.

A 20% lighter version of the original color is **38, 13.457, 21.377**, and **1, 2.495, 19.405** is the 20% darker color. If you saturate the color by 10%, you get **16, 17.114, 24.113**, and if you desaturate by 10%, it is **20, 9.819, 21.591**.

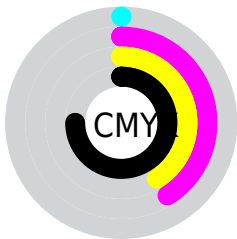
Distribution



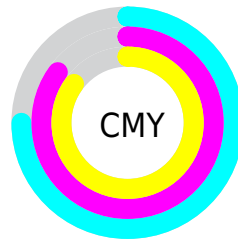
- Red (25%)
- Green (15%)
- Blue (15%)



- Red (25%)
- Yellow (15%)
- Blue (15%)



- Cyan (0%)
- Magenta (41%)
- Yellow (41%)
- Black (75%)



- Cyan (75%)
- Magenta (85%)
- Yellow (85%)


Brightness & Saturation Gradients

These gradients show how the CIELCh color 18, 13.382, 22.702 changes by changing the brightness by 10 percent. The first figure shows a shift by +10% for each color and the second figure -10%.

Similar to the brightness gradients but the following saturation gradients show a change of the CIELCh color 18, 13.382, 22.702 by changing the saturation by 10% instead.

 18, 13.382, 22.702

 18, 13.382, 22.702

 100, 13.382,
22.702

 8, 13.382, 22.702

 38, 13.382, 22.702

 0, 13.382, 22.702

 48, 13.382, 22.702

 58, 13.382, 22.702

 68, 13.382, 22.702

 78, 13.382, 22.702

 88, 13.382, 22.702

 98, 13.382, 22.702

18, 13.382, 22.702

18, 13.382, 22.702

16, 17.114, 24.113

20, 9.819, 21.591

14, 20.968, 25.886

22, 6.456, 20.701

13, 24.741, 27.559

24, 3.302, 19.966

12, 27.899, 27.884

26, 0.354, 18.792

10, 30.562, 27.564

29, 2.398, 199.129

9, 33.043, 26.904

31, 4.971, 198.708

33, 7.379, 198.389

35, 9.641, 198.131

38, 11.772,
197.917

Harmonies

Complementary

The Complementary color scheme is a pair of colors which are on the opposite of each other on the color wheel.



18, 13.382, 22.702



25, 10.407, 197.682

Rectangle

The Rectangle color scheme consists of four colors that form a rectangle on the color wheel.



18, 13.382, 22.702



18, 13.382, 72.702



18, 13.382, 202.702



18, 13.382, 252.702

Sweetspot

The Sweet Spot groups the original color and five complimentary colors.



18, 13.381, 22.706



31, 4.386, 20.054



19, 20.822, 326.372



14, 2.862, 20.070



69, 0.009, 296.813



16, 0.003, 296.813

Same Dimension

The Same Dimension uses a secret algorithm to generate beautiful new colors.



18, 13.381, 22.706



22, 20.278, 24.092



22, 11.095, 70.938



10, 1.574, 19.767



17, 47.178, 34.876



46, 94.132, 40.001

Inverse Universe

The Inverse Universe completely reimagines the original color for something new.



25, 10.407, 197.682



32, 14.716, 197.358



20, 10.024, 261.390



11, 1.503, 199.117



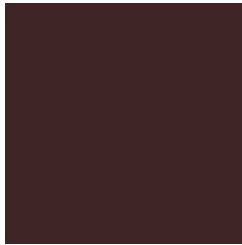
36, 24.212, 196.399



80, 45.105, 196.400

Previews

White Background



This preview shows how the CIELCh color 18, 13.382, 22.702 looks on a white background.

Color Contrast Check

Large Text (above 18pt) WCAG AA ✓ Pass

Any Text WCAG AA ✓ Pass

Large Text (above 18pt) WCAG AAA ✓ Pass

Any Text WCAG AAA ✓ Pass

Black Background



This preview shows how the CIE LCh color 18, 13.382, 22.702 looks on a black background.

Color Contrast Check

Large Text (above 18pt) WCAG AA × Fail

Any Text WCAG AA × Fail

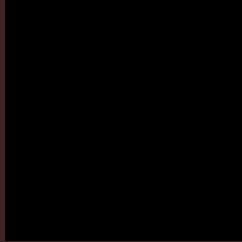
Large Text (above 18pt) WCAG AAA × Fail

Any Text WCAG AAA × Fail

If you want to check with other color combinations, try the [Color Contrast Checker](#).

CIELCh 18, 13.382, 22.702

Background



This preview shows how black text looks on a background with the CIELCh color 18, 13.382, 22.702.

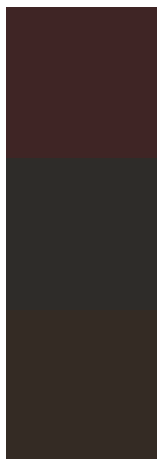


This preview shows how white text looks on a background with the CIELCh color 18, 13.382, 22.702.

Color Blindness Simulation

Color vision deficiency is a very complex topic, and I could not describe the different causes any better than Wikipedia does, so if you want to learn more, you should check out their [article about color blindness](#).

Dichromacy



Original Color

18, 13.382, 22.702

Protanopia

18, 2.275, 84.253

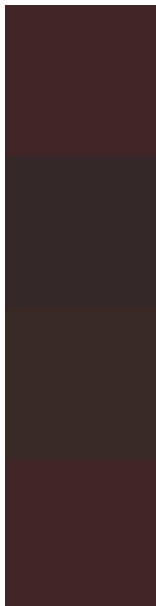
Deuteranopia

18, 6.700, 65.466



Tritanopia
18, 13.225, 16.898

Trichromacy



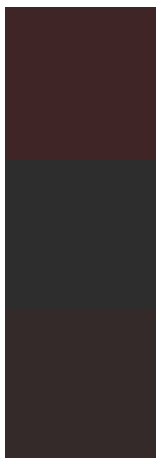
Original Color
18, 13.382, 22.702

Protanomaly
18, 5.540, 27.694

Deuteranomaly
18, 8.544, 44.373

Tritanomaly
18, 13.284, 19.818

Monochromacy



Original Color
18, 13.382, 22.702

Achromatopsia
18, 0.003, 296.813

Achromatomaly
18, 4.925, 20.482

CSS Examples

Text

The CSS property to change the color of the text to CIELCh 18, 13.382, 22.702 is called "color". The color property can be set on classes, ids or directly on the HTML element.

This example shows how text in the color `rgb(63, 37, 37)` looks like.

```
.text, #text, p{  
    color:rgb(63, 37, 37)  
}
```

If you want to add a text shadow in that color use the text-shadow property, you can generate a text shadow directly with our [CSS Text Shadow Generator](#).

Here you see how black text with a 4 pixel rgb(63, 37, 37) colored shadow looks like.

```
.shadow{ text-shadow: 4px 4px 2px rgb(63, 37, 37) }
```

Border

The CSS property to change the border of an element to CIELCh 18, 13.382, 22.702 is called "border". The border property can be set on classes, ids or directly on the HTML element.

This example shows the color as border, it can be applied via the CSS property "border" or "border-color".

```
.border, #border, table{ border:4px solid rgb(63, 37, 37) }
```

If only the border color should be changed use the property border-color.

```
.border{ border-color:rgb(63, 37, 37) }
```

If you want to add a box shadow in that color use:

Here you see how a box with a 4 pixel rgb(63, 37, 37) colored shadow looks like.

```
.boxshadow{ -moz-box-shadow:4px 4px 4px  
4px rgb(63, 37, 37); -webkit-box-  
shadow:4px 4px 4px 4px rgb(63, 37, 37);  
box-shadow:4px 4px 4px 4px rgb(63, 37, 37)  
}
```

Background

The CSS property to change the background color of an element to CIELCh 18, 13.382, 22.702 is called "background". The background property can be set on classes, ids or directly on the HTML element.

```
.background, #background, body{  
background: rgb(63, 37, 37) }
```

If only the background color should be changed can be used:

```
.background{ background-color: rgb(63, 37,  
37) }
```

This example shows the color as background, it is applied via the CSS property "background".

To optimize and compress your CSS code, you can use our [online CSS compressor and optimizer](#) based on csstidy. If you want to create a linear or radial gradient as background or border, check our [CSS Gradient Generator](#).

Hey! You found this booklet interesting? Support Converting Colors with the new Membership Option!

The pro membership hides all ads, plus gives you double the colors in the color bucket, and more awesome pro features!

[Learn more, Memberships starting at \\$2.50/m!](#)

**Follow me
on Twitter!**

@ConvertingColor