

Converting Colors

CIELCh(18, 14.765, 19.503)

Have a look what the booklet for
CIELCh(18, 14.765, 19.503) contains.

CIELCh(18, 14.897, 20.611)	3
<i>Conversions</i>	4
<i>Details</i>	6
<i>Harmonies</i>	11
<i>Previews</i>	20
<i>Color Blindness Simulation</i>	23
<i>CSS Examples</i>	26

Color

CIELCh(18, 14.897, 20.611)

Conversions

Conversions Part 1

Format	Color
Hex	412425
RGB	65, 36, 37
RGB Percent	25%, 14%, 15%
CMY	0.7451, 0.8589, 0.8549
CMYK	0.00, 0.45, 0.43, 0.75
HSL	358°, 29%, 20%
HSV	358°, 45%, 25%
XYZ	3.1435, 2.5180, 2.0698
YIQ	44.7850, 16.9630, 6.4590

Conversions

Conversions Part 2

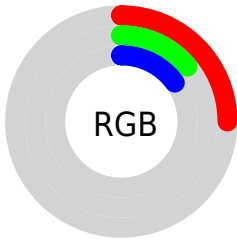
Format	Color
RYB	65, 36, 37
Decimal	4269093
CIELab	18.00, 13.94, 5.24
CIElCh	18, 14.897, 20.611
Yxy	2.5180, 0.4066, 0.3257
Android (android.graphics.Color)	4282459173 (0xFF412425)
YUV	44.7850, -3.8380, 17.7286
Hunter-Lab	15.8683, 7.5912, 3.3744

Details

The CIELCh color **18, 14.897, 20.611** is a dark color, and the websafe version is hex **663333**. A complement of this color would be **25, 11.506, 194.215**, and the grayscale version is **18, 0.003, 296.813**.

A 20% lighter version of the original color is **38, 14.816, 19.285**, and **1, 4.012, 19.405** is the 20% darker color. If you saturate the color by 10%, you get **16, 18.697, 22.220**, and if you desaturate by 10%, it is **20, 11.231, 19.330**.

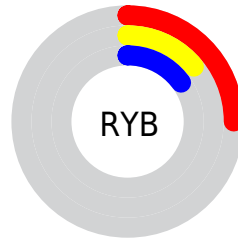
Distribution



Red (25%)

Green (14%)

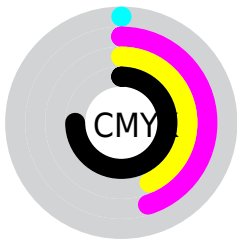
Blue (15%)



Red (25%)

Yellow (14%)

Blue (15%)

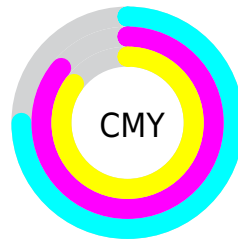


Cyan (0%)

Magenta (45%)

Yellow (43%)

Black (75%)



Cyan (75%)

Magenta (86%)

Yellow (85%)


Brightness & Saturation Gradients

These gradients show how the CIELCh color 18, 14.897, 20.611 changes by changing the brightness by 10 percent. The first figure shows a shift by +10% for each color and the second figure -10%.

Similar to the brightness gradients but the following saturation gradients show a change of the CIELCh color 18, 14.897, 20.611 by changing the saturation by 10% instead.

 18, 14.897, 20.611

 18, 14.897, 20.611

 100, 14.897,
20.611

 8, 14.897, 20.611

 38, 14.897, 20.611

 0, 14.897, 20.611

 48, 14.897, 20.611

 58, 14.897, 20.611

 68, 14.897, 20.611

 78, 14.897, 20.611

 88, 14.897, 20.611

 98, 14.897, 20.611

18, 14.897, 20.611

18, 14.897, 20.611

16, 18.697, 22.220

20, 11.231, 19.330

14, 22.567, 24.227

22, 7.743, 18.294

13, 26.302, 26.193

24, 4.452, 17.440

12, 29.375, 26.937

26, 1.361, 16.637

11, 32.090, 26.649

29, 1.534, 196.419

10, 33.639, 26.272

31, 4.246, 195.849

33, 6.790, 195.433

36, 9.181, 195.088

38, 11.436,
194.793

Harmonies

Complementary

The Complementary color scheme is a pair of colors which are on the opposite of each other on the color wheel.



18, 14.897, 20.611



25, 11.506, 194.215

Rectangle

The Rectangle color scheme consists of four colors that form a rectangle on the color wheel.



18, 14.897, 20.611



18, 14.897, 70.611



18, 14.897, 200.611



18, 14.897, 250.611

Sweetspot

The Sweet Spot groups the original color and five complimentary colors.



18, 14.896, 20.615



32, 4.891, 17.357



19, 22.761, 325.062



15, 3.466, 17.447



70, 0.009, 296.813



18, 0.003, 296.813

Same Dimension

The Same Dimension uses a secret algorithm to generate beautiful new colors.



18, 14.896, 20.615



22, 23.003, 22.523



22, 12.212, 65.343



12, 1.688, 16.972



18, 47.618, 33.901



47, 93.543, 38.905

Inverse Universe

The Inverse Universe completely reimagines the original color for something new.



18, 14.896, 20.615



22, 23.003, 22.523



21, 10.534, 256.253



12, 1.688, 16.972



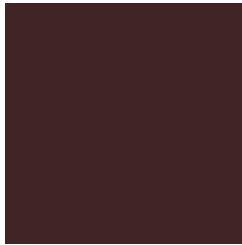
18, 47.618, 33.901



47, 93.543, 38.905

Previews

White Background



This preview shows how the CIELCh color 18, 14.897, 20.611 looks on a white background.

Color Contrast Check

Large Text (above 18pt) WCAG AA ✓ Pass

Any Text WCAG AA ✓ Pass

Large Text (above 18pt) WCAG AAA ✓ Pass

Any Text WCAG AAA ✓ Pass

Black Background



This preview shows how the CIE LCh color 18, 14.897, 20.611 looks on a black background.

Color Contrast Check

Large Text (above 18pt) WCAG AA × Fail

Any Text WCAG AA × Fail

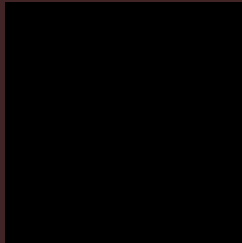
Large Text (above 18pt) WCAG AAA × Fail

Any Text WCAG AAA × Fail

If you want to check with other color combinations, try the [Color Contrast Checker](#).

CIELCh 18, 14.897, 20.611

Background



This preview shows how black text looks on a background with the CIELCh color 18, 14.897, 20.611.

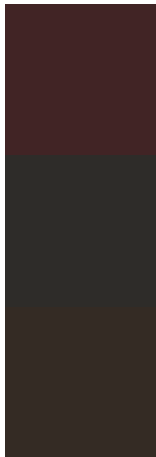


This preview shows how white text looks on a background with the CIELCh color 18, 14.897, 20.611.

Color Blindness Simulation

Color vision deficiency is a very complex topic, and I could not describe the different causes any better than Wikipedia does, so if you want to learn more, you should check out their [article about color blindness](#).

Dichromacy



Original Color

18, 14.897, 20.611

Protanopia

18, 2.275, 84.253

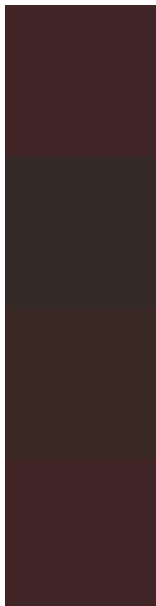
Deuteranopia

18, 6.700, 65.466



Tritanopia
18, 14.817, 18.015

Trichromacy



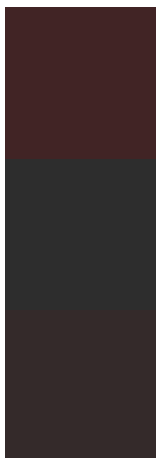
Original Color
18, 14.897, 20.611

Protanomaly
18, 6.049, 27.204

Deuteranomaly
18, 9.275, 38.300

Tritanomaly
18, 14.817, 18.015

Monochromacy



Original Color
18, 14.897, 20.611

Achromatopsia
18, 0.003, 296.813

Achromatomaly
18, 4.925, 20.482

CSS Examples

Text

The CSS property to change the color of the text to CIElCh 18, 14.897, 20.611 is called "color". The color property can be set on classes, ids or directly on the HTML element.

This example shows how text in the color `rgb(65, 36, 37)` looks like.

```
.text, #text, p{  
    color:rgb(65, 36, 37)  
}
```

If you want to add a text shadow in that color use the text-shadow property, you can generate a text shadow directly with our [CSS Text Shadow Generator](#).

Here you see how black text with a 4 pixel rgb(65, 36, 37) colored shadow looks like.

```
.shadow{ text-shadow: 4px 4px 2px rgb(65, 36, 37) }
```

Border

The CSS property to change the border of an element to CIELCh 18, 14.897, 20.611 is called "border". The border property can be set on classes, ids or directly on the HTML element.

This example shows the color as border, it can be applied via the CSS property "border" or "border-color".

```
.border, #border, table{ border:4px solid rgb(65, 36, 37) }
```

If only the border color should be changed use the property `border-color`.

```
.border{ border-color:rgb(65, 36, 37) }
```

If you want to add a box shadow in that color use:

Here you see how a box with a 4 pixel `rgb(65, 36, 37)` colored shadow looks like.

```
.boxshadow{ -moz-box-shadow:4px 4px 4px  
4px rgb(65, 36, 37); -webkit-box-  
shadow:4px 4px 4px 4px rgb(65, 36, 37);  
box-shadow:4px 4px 4px 4px rgb(65, 36, 37)  
}
```

Background

The CSS property to change the background color of an element to CIELCh 18, 14.897, 20.611 is called "background". The background property can be set on classes, ids or directly on the HTML element.

```
.background, #background, body{  
background: rgb(65, 36, 37) }
```

If only the background color should be changed can be used:

```
.background{ background-color: rgb(65, 36,  
37) }
```

This example shows the color as background, it is applied via the CSS property "background".

To optimize and compress your CSS code, you can use our [online CSS compressor and optimizer](#) based on csstidy. If you want to create a linear or radial gradient as background or border, check our [CSS Gradient Generator](#).

Hey! You found this booklet
interesting? Support Converting
Colors with the new Membership
Option!

The pro membership hides all ads, plus gives you
double the colors in the color bucket, and more
awesome pro features!

[Learn more, Memberships starting at \\$2.50/m!](#)

**Follow me
on Twitter!**

@ConvertingColor