

Converting Colors

CIELCh(18, 16.095, 29.849)

Have a look what the booklet for
CIELCh(18, 16.095, 29.849) contains.

CIELCh(18, 16.073, 30.402)	3
<i>Conversions</i>	4
<i>Details</i>	6
<i>Harmonies</i>	11
<i>Previews</i>	20
<i>Color Blindness Simulation</i>	23
<i>CSS Examples</i>	26

Color

CIELCh(18, 16.073, 30.402)

Conversions

Conversions Part 1

Format	Color
Hex	422421
RGB	66, 36, 33
RGB Percent	26%, 14%, 13%
CMY	0.7417, 0.8593, 0.8710
CMYK	0.00, 0.46, 0.50, 0.74
HSL	5°, 33%, 19%
HSV	5°, 50%, 26%
XYZ	3.1388, 2.5180, 1.7515
YIQ	44.6280, 18.8430, 5.4270

Conversions

Conversions Part 2

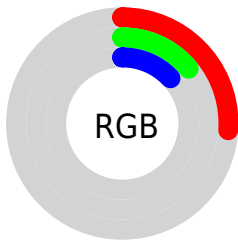
Format	Color
RYB	66, 36, 33
Decimal	4334625
CIELab	18.00, 13.86, 8.13
CIELCh	18, 16.073, 30.402
Yxy	2.5180, 0.4237, 0.3399
Android (android.graphics.Color)	4282524705 (0xFF422421)
YUV	44.6280, -5.7326, 18.7432
Hunter-Lab	15.8683, 7.5379, 4.5637

Details

The CIELCh color **18, 16.073, 30.402** is a dark color, and the websafe version is hex **663333**. A complement of this color would be **24, 11.535, 207.559**, and the grayscale version is **18, 0.003, 296.813**.

A 20% lighter version of the original color is **38, 16.292, 30.213**, and **1, 4.012, 19.405** is the 20% darker color. If you saturate the color by 10%, you get **16, 19.900, 31.581**, and if you desaturate by 10%, it is **20, 12.431, 29.497**.

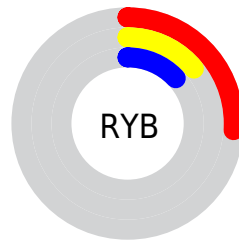
Distribution



Red (26%)

Green (14%)

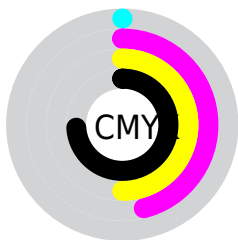
Blue (13%)



Red (26%)

Yellow (14%)

Blue (13%)

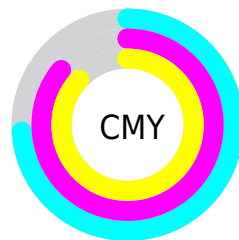


Cyan (0%)

Magenta (46%)

Yellow (50%)

Black (74%)



Cyan (74%)

Magenta (86%)

Yellow (87%)


Brightness & Saturation Gradients

These gradients show how the CIELCh color 18, 16.073, 30.402 changes by changing the brightness by 10 percent. The first figure shows a shift by +10% for each color and the second figure -10%.

Similar to the brightness gradients but the following saturation gradients show a change of the CIELCh color 18, 16.073, 30.402 by changing the saturation by 10% instead.

 18, 16.073, 30.402

 18, 16.073, 30.402

 100, 16.073,
30.402

 8, 16.073, 30.402

 38, 16.073, 30.402

 0, 16.073, 30.402

 48, 16.073, 30.402

 58, 16.073, 30.402

 68, 16.073, 30.402

 78, 16.073, 30.402

 88, 16.073, 30.402

 98, 16.073, 30.402

■ 18, 16.073, 30.402

■ 18, 16.073, 30.402

■ 16, 19.900, 31.581

■ 20, 12.431, 29.497

■ 15, 23.839, 32.960

■ 22, 9.003, 28.806

■ 13, 27.304, 33.055

■ 24, 5.795, 28.284

■ 12, 30.121, 32.385

■ 26, 2.804, 27.870

■ 11, 32.657, 32.272

■ 28, 0.019, 14.285

■ 30, 2.576, 207.626

■ 32, 4.998, 207.470

■ 34, 7.263, 207.397

■ 36, 9.389, 207.370

Harmonies

Complementary

The Complementary color scheme is a pair of colors which are on the opposite of each other on the color wheel.



18, 16.073, 30.402



24, 11.535, 207.559

Rectangle

The Rectangle color scheme consists of four colors that form a rectangle on the color wheel.



18, 16.073, 30.402



18, 16.073, 80.402



18, 16.073, 210.402



18, 16.073, 260.402

Sweetspot

The Sweet Spot groups the original color and five complimentary colors.



18, 16.072, 30.406



33, 5.356, 28.094



18, 24.545, 329.288



15, 3.607, 28.128



70, 0.009, 296.813



18, 0.003, 296.813

Same Dimension

The Same Dimension uses a secret algorithm to generate beautiful new colors.



18, 16.072, 30.406



22, 25.167, 31.932



23, 14.792, 78.019



12, 1.548, 27.807



19, 46.952, 37.936



48, 93.625, 40.873

Inverse Universe

The Inverse Universe completely reimagines the original color for something new.



24, 11.535, 207.559



32, 16.324, 207.941



19, 13.909, 271.802



12, 1.476, 207.645



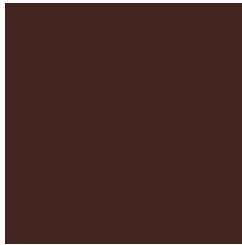
34, 22.238, 211.307



75, 40.782, 212.606

Previews

White Background



This preview shows how the CIE LCh color 18, 16.073, 30.402 looks on a white background.

Color Contrast Check

Large Text (above 18pt) WCAG AA ✓ Pass

Any Text WCAG AA ✓ Pass

Large Text (above 18pt) WCAG AAA ✓ Pass

Any Text WCAG AAA ✓ Pass

Black Background



This preview shows how the CIE LCh color 18, 16.073, 30.402 looks on a black background.

Color Contrast Check

Large Text (above 18pt) WCAG AA × Fail

Any Text WCAG AA × Fail

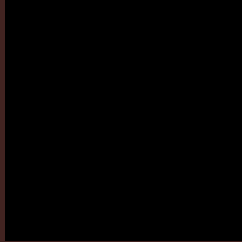
Large Text (above 18pt) WCAG AAA × Fail

Any Text WCAG AAA × Fail

If you want to check with other color combinations, try the [Color Contrast Checker](#).

CIELCh 18, 16.073, 30.402

Background



This preview shows how black text looks on a background with the CIELCh color 18, 16.073, 30.402.

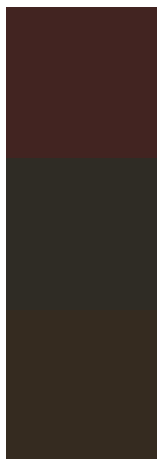


This preview shows how white text looks on a background with the CIELCh color 18, 16.073, 30.402.

Color Blindness Simulation

Color vision deficiency is a very complex topic, and I could not describe the different causes any better than Wikipedia does, so if you want to learn more, you should check out their [article about color blindness](#).

Dichromacy



Original Color

18, 16.073, 30.402

Protanopia

18, 5.037, 91.526

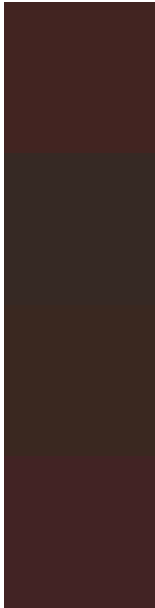
Deuteranopia

18, 9.263, 73.694



Tritanopia
18, 15.841, 16.290

Trichromacy



Original Color

18, 16.073, 30.402

Protanomaly

18, 7.582, 47.415

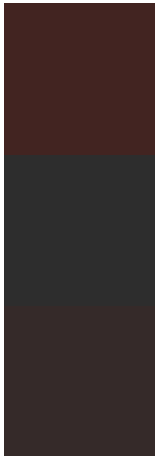
Deuteranomaly

18, 11.173, 50.221

Tritanomaly

18, 15.997, 21.142

Monochromacy



Original Color

18, 16.073, 30.402

Achromatopsia

18, 0.003, 296.813

Achromatomaly

18, 5.516, 27.678

CSS Examples

Text

The CSS property to change the color of the text to CIELCh 18, 16.073, 30.402 is called "color". The color property can be set on classes, ids or directly on the HTML element.

This example shows how text in the color `rgb(66, 36, 33)` looks like.

```
.text, #text, p{  
    color:rgb(66, 36, 33)  
}
```

If you want to add a text shadow in that color use the text-shadow property, you can generate a text shadow directly with our [CSS Text Shadow Generator](#).

Here you see how black text with a 4 pixel rgb(66, 36, 33) colored shadow looks like.

```
.shadow{ text-shadow: 4px 4px 2px rgb(66, 36, 33) }
```

Border

The CSS property to change the border of an element to CIELCh 18, 16.073, 30.402 is called "border". The border property can be set on classes, ids or directly on the HTML element.

This example shows the color as border, it can be applied via the CSS property "border" or "border-color".

```
.border, #border, table{ border:4px solid rgb(66, 36, 33) }
```

If only the border color should be changed use the property `border-color`.

```
.border{ border-color:rgb(66, 36, 33) }
```

If you want to add a box shadow in that color use:

Here you see how a box with a 4 pixel `rgb(66, 36, 33)` colored shadow looks like.

```
.boxshadow{ -moz-box-shadow:4px 4px 4px  
4px rgb(66, 36, 33); -webkit-box-  
shadow:4px 4px 4px 4px rgb(66, 36, 33);  
box-shadow:4px 4px 4px 4px rgb(66, 36, 33)  
}
```

Background

The CSS property to change the background color of an element to CIELCh 18, 16.073, 30.402 is called "background". The background property can be set on classes, ids or directly on the HTML element.

```
.background, #background, body{  
background: rgb(66, 36, 33) }
```

If only the background color should be changed can be used:

```
.background{ background-color: rgb(66, 36,  
33) }
```

This example shows the color as background, it is applied via the CSS property "background".

To optimize and compress your CSS code, you can use our [online CSS compressor and optimizer](#) based on csstidy. If you want to create a linear or radial gradient as background or border, check our [CSS Gradient Generator](#).

Hey! You found this booklet
interesting? Support Converting
Colors with the new Membership
Option!

The pro membership hides all ads, plus gives you
double the colors in the color bucket, and more
awesome pro features!

[Learn more, Memberships starting at \\$2.50/m!](#)

**Follow me
on Twitter!**

@ConvertingColor