

Converting Colors

CIELCh(18, 17.030, 6.204)

Have a look what the booklet for
CIELCh(18, 17.030, 6.204) contains.

CIELCh(18, 16.986, 5.652)	3
<i>Conversions</i>	4
<i>Details</i>	6
<i>Harmonies</i>	11
<i>Previews</i>	20
<i>Color Blindness Simulation</i>	23
<i>CSS Examples</i>	26

Color

CIELCh(18, 16.986, 5.652)

Conversions

Conversions Part 1

Format	Color
Hex	43222A
RGB	67, 34, 42
RGB Percent	26%, 13%, 16%
CMY	0.7367, 0.8661, 0.8348
CMYK	0.00, 0.49, 0.37, 0.74
HSL	345°, 33%, 20%
HSV	345°, 49%, 26%
XYZ	3.3207, 2.5180, 2.5136
YIQ	44.7790, 17.1000, 9.4840

Conversions

Conversions Part 2

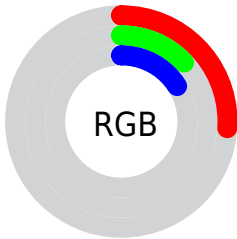
Format	Color
RYB	67, 34, 42
Decimal	4399658
CIELab	18.00, 16.90, 1.67
CIELCh	18, 16.986, 5.652
Yxy	2.5180, 0.3976, 0.3015
Android (android.graphics.Color)	4282589738 (0xFF43222A)
YUV	44.7790, -1.3700, 19.4878
Hunter-Lab	15.8683, 9.5839, 1.7160

Details

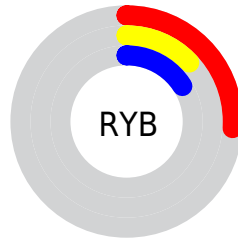
The CIELCh color **18, 16.986, 5.652** is a dark color, and the websafe version is hex **663333**. A complement of this color would be **26, 14.450, 175.683**, and the grayscale version is **18, 0.003, 296.813**.

A 20% lighter version of the original color is **38, 16.907, 5.427**, and **1, 5.949, 19.405** is the 20% darker color. If you saturate the color by 10%, you get **16, 20.533, 7.492**, and if you desaturate by 10%, it is **20, 13.384, 4.133**.

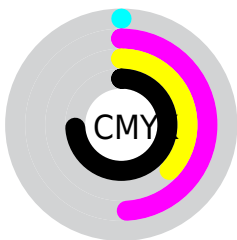
Distribution



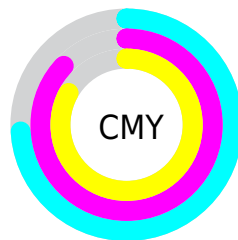
- Red (26%)
- Green (13%)
- Blue (16%)



- Red (26%)
- Yellow (13%)
- Blue (16%)



- Cyan (0%)
- Magenta (49%)
- Yellow (37%)
- Black (74%)



- Cyan (74%)
- Magenta (87%)
- Yellow (83%)

Brightness & Saturation Gradients

These gradients show how the CIELCh color 18, 16.986, 5.652 changes by changing the brightness by 10 percent. The first figure shows a shift by +10% for each color and the second figure -10%.

Similar to the brightness gradients but the following saturation gradients show a change of the CIELCh color 18, 16.986, 5.652 by changing the saturation by 10% instead.

 18, 16.986, 5.652  18, 16.986, 5.652

 100, 16.986, 5.652  8, 16.986, 5.652

 38, 16.986, 5.652  0, 16.986, 5.652

 48, 16.986, 5.652

 58, 16.986, 5.652

 68, 16.986, 5.652

 78, 16.986, 5.652

 88, 16.986, 5.652

 98, 16.986, 5.652

 18, 16.986, 5.652  18, 16.986, 5.652

■ 16, 20.533, 7.492

■ 20, 13.384, 4.133

■ 15, 23.923, 9.741

■ 22, 9.814, 2.853

■ 13, 27.037, 12.512

■ 24, 6.330, 1.753

■ 12, 29.837, 15.733

■ 26, 2.966, 0.772

■ 11, 32.747, 17.425

■ 29, 0.262, 180.898

■ 11, 32.998, 17.482

■ 31, 3.348, 179.361

■ 33, 6.294, 178.674

■ 36, 9.106, 178.071

■ 38, 11.794,
177.526

Harmonies

Complementary

The Complementary color scheme is a pair of colors which are on the opposite of each other on the color wheel.



18, 16.986, 5.652



26, 14.450, 175.683

Rectangle

The Rectangle color scheme consists of four colors that form a rectangle on the color wheel.



18, 16.986, 5.652



18, 16.986, 55.652



18, 16.986, 185.652



18, 16.986, 235.652

Sweetspot

The Sweet Spot groups the original color and five complimentary colors.



18, 16.985, 5.654



33, 6.083, 1.395



18, 24.704, 319.136



15, 4.092, 1.478



70, 0.009, 296.813



18, 0.003, 296.813

Same Dimension

The Same Dimension uses a secret algorithm to generate beautiful new colors.



18, 16.985, 5.654



22, 25.322, 7.954



20, 14.433, 44.274



12, 1.778, 0.707



18, 43.425, 22.205



47, 82.637, 26.900

Inverse Universe

The Inverse Universe completely reimagines the original color for something new.



18, 16.985, 5.654



22, 25.322, 7.954



23, 10.665, 229.344



12, 1.778, 0.707



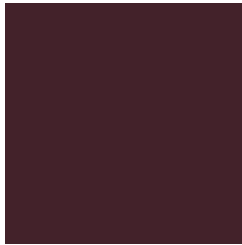
18, 43.425, 22.205



47, 82.637, 26.900

Previews

White Background



This preview shows how the CIELCh color 18, 16.986, 5.652 looks on a white background.

Color Contrast Check

Large Text (above 18pt) WCAG AA ✓ Pass

Any Text WCAG AA ✓ Pass

Large Text (above 18pt) WCAG AAA ✓ Pass

Any Text WCAG AAA ✓ Pass

Black Background



This preview shows how the CIE LCh color 18, 16.986, 5.652 looks on a black background.

Color Contrast Check

Large Text (above 18pt) WCAG AA × Fail

Any Text WCAG AA × Fail

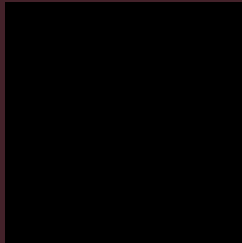
Large Text (above 18pt) WCAG AAA × Fail

Any Text WCAG AAA × Fail

If you want to check with other color combinations, try the [Color Contrast Checker](#).

CIELCh 18, 16.986, 5.652

Background



This preview shows how black text looks on a background with the CIELCh color 18, 16.986, 5.652.



This preview shows how white text looks on a background with the CIELCh color 18, 16.986, 5.652.

Color Blindness Simulation

Color vision deficiency is a very complex topic, and I could not describe the different causes any better than Wikipedia does, so if you want to learn more, you should check out their [article about color blindness](#).

Dichromacy



Original Color

18, 16.986, 5.652

Protanopia

18, 2.762, 290.879

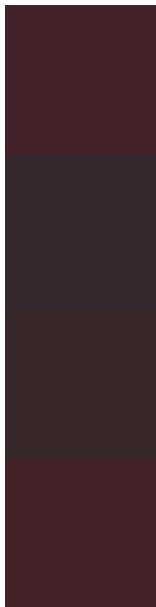
Deuteranopia

18, 3.722, 41.626



Tritanopia
18, 16.417, 19.024

Trichromacy



Original Color

18, 16.986, 5.652

Protanomaly

18, 7.070, 345.332

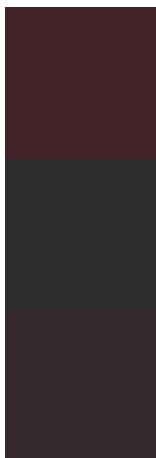
Deuteranomaly

18, 8.004, 16.413

Tritanomaly

18, 16.311, 14.293

Monochromacy



Original Color

18, 16.986, 5.652

Achromatopsia

18, 0.003, 296.813

Achromatomaly

18, 6.181, 1.444

CSS Examples

Text

The CSS property to change the color of the text to CIELCh 18, 16.986, 5.652 is called "color". The color property can be set on classes, ids or directly on the HTML element.

This example shows how text in the color `rgb(67, 34, 42)` looks like.

```
.text, #text, p{  
    color:rgb(67, 34, 42)  
}
```

If you want to add a text shadow in that color use the text-shadow property, you can generate a text shadow directly with our [CSS Text Shadow Generator](#).

Here you see how black text with a 4 pixel rgb(67, 34, 42) colored shadow looks like.

```
.shadow{ text-shadow: 4px 4px 2px rgb(67, 34, 42) }
```

Border

The CSS property to change the border of an element to CIELCh 18, 16.986, 5.652 is called "border". The border property can be set on classes, ids or directly on the HTML element.

This example shows the color as border, it can be applied via the CSS property "border" or "border-color".

```
.border, #border, table{ border:4px solid rgb(67, 34, 42) }
```

If only the border color should be changed use the property `border-color`.

```
.border{ border-color:rgb(67, 34, 42) }
```

If you want to add a box shadow in that color use:

Here you see how a box with a 4 pixel `rgb(67, 34, 42)` colored shadow looks like.

```
.boxshadow{ -moz-box-shadow:4px 4px 4px  
4px rgb(67, 34, 42); -webkit-box-  
shadow:4px 4px 4px 4px rgb(67, 34, 42);  
box-shadow:4px 4px 4px 4px rgb(67, 34, 42)  
}
```

Background

The CSS property to change the background color of an element to CIELCh 18, 16.986, 5.652 is called "background". The background property can be set on classes, ids or directly on the HTML element.

```
.background, #background, body{  
background: rgb(67, 34, 42) }
```

If only the background color should be changed can be used:

```
.background{ background-color: rgb(67, 34,  
42) }
```

This example shows the color as background, it is applied via the CSS property "background".

To optimize and compress your CSS code, you can use our [online CSS compressor and optimizer](#) based on csstidy. If you want to create a linear or radial gradient as background or border, check our [CSS Gradient Generator](#).

Hey! You found this booklet interesting? Support Converting Colors with the new Membership Option!

The pro membership hides all ads, plus gives you double the colors in the color bucket, and more awesome pro features!

[Learn more, Memberships starting at \\$2.50/m!](#)

**Follow me
on Twitter!**

@ConvertingColor