

Converting Colors

CIELCh(18, 17.570, 4.731)

Have a look what the booklet for
CIELCh(18, 17.570, 4.731) contains.

CIELCh(18, 17.450, 6.333)	3
<i>Conversions</i>	4
<i>Details</i>	6
<i>Harmonies</i>	11
<i>Previews</i>	20
<i>Color Blindness Simulation</i>	23
<i>CSS Examples</i>	26

Color

CIELCh(18, 17.450, 6.333)

Conversions

Conversions Part 1

Format	Color
Hex	44222A
RGB	68, 34, 42
RGB Percent	27%, 13%, 16%
CMY	0.7343, 0.8675, 0.8361
CMYK	0.00, 0.50, 0.38, 0.73
HSL	346°, 33%, 20%
HSV	346°, 50%, 27%
XYZ	3.3476, 2.5180, 2.4804
YIQ	45.0780, 17.6960, 9.6960

Conversions

Conversions Part 2

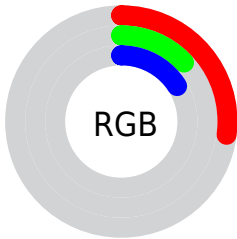
Format	Color
R_{YB}	68, 34, 42
Decimal	4465194
CIE _{Lab}	18.00, 17.34, 1.92
CIE _{LCh}	18, 17.450, 6.333
Yxy	2.5180, 0.4011, 0.3017
Android (android.graphics.Color)	4282655274 (0xFF44222A)
YUV	45.0780, -1.5175, 20.1026
Hunter-Lab	15.8683, 9.8864, 1.8401

Details

The CIELCh color **18, 17.450, 6.333** is a dark color, and the websafe version is hex **663333**. A complement of this color would be **26, 14.733, 176.094**, and the grayscale version is **18, 0.003, 296.813**.

A 20% lighter version of the original color is **38, 17.764, 6.428**, and **1, 6.390, 19.405** is the 20% darker color. If you saturate the color by 10%, you get **16, 21.021, 8.223**, and if you desaturate by 10%, it is **20, 13.819, 4.777**.

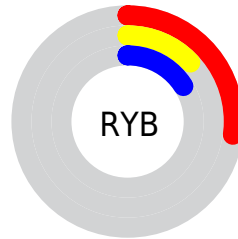
Distribution



Red (27%)

Green (13%)

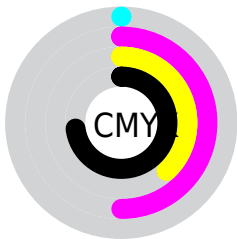
Blue (16%)



Red (27%)

Yellow (13%)

Blue (16%)

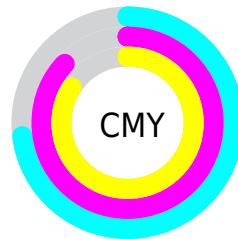


Cyan (0%)

Magenta (50%)

Yellow (38%)

Black (73%)



Cyan (73%)

Magenta (87%)

Yellow (84%)

Brightness & Saturation Gradients

These gradients show how the CIELCh color 18, 17.450, 6.333 changes by changing the brightness by 10 percent. The first figure shows a shift by +10% for each color and the second figure -10%.

Similar to the brightness gradients but the following saturation gradients show a change of the CIELCh color 18, 17.450, 6.333 by changing the saturation by 10% instead.

 18, 17.450, 6.333  18, 17.450, 6.333

 100, 17.450, 6.333  8, 17.450, 6.333

 38, 17.450, 6.333  0, 17.450, 6.333

 48, 17.450, 6.333


 58, 17.450, 6.333

 68, 17.450, 6.333

 78, 17.450, 6.333

 88, 17.450, 6.333

 98, 17.450, 6.333

 18, 17.450, 6.333  18, 17.450, 6.333

16, 21.021, 8.223	20, 13.819, 4.777
15, 24.427, 10.538	22, 10.216, 3.470
13, 27.549, 13.391	24, 6.699, 2.352
12, 30.376, 16.586	26, 3.303, 1.362
11, 33.275, 18.067	29, 0.046, 355.521
	31, 3.067, 179.933
	33, 6.037, 179.236
	36, 8.870, 178.628
	38, 11.576, 178.081

Harmonies

Complementary

The Complementary color scheme is a pair of colors which are on the opposite of each other on the color wheel.



18, 17.450, 6.333



26, 14.733, 176.094

Rectangle

The Rectangle color scheme consists of four colors that form a rectangle on the color wheel.



18, 17.450, 6.333



18, 17.450, 56.333



18, 17.450, 186.333



18, 17.450, 236.333

Sweetspot

The Sweet Spot groups the original color and five complimentary colors.



18, 17.449, 6.335



34, 6.216, 1.896



18, 25.374, 319.171



16, 4.286, 1.995



71, 0.009, 296.813



19, 0.004, 296.813

Same Dimension

The Same Dimension uses a secret algorithm to generate beautiful new colors.



18, 17.449, 6.335



22, 26.362, 8.746



20, 14.887, 44.277



12, 1.773, 1.202



18, 43.567, 22.766



47, 82.988, 27.449

Inverse Universe

The Inverse Universe completely reimagines the original color for something new.



18, 17.449, 6.335



22, 26.362, 8.746



23, 10.916, 229.487



12, 1.773, 1.202



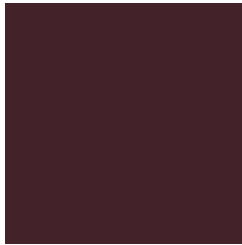
18, 43.567, 22.766



47, 82.988, 27.449

Previews

White Background



This preview shows how the CIE LCh color 18, 17.450, 6.333 looks on a white background.

Color Contrast Check

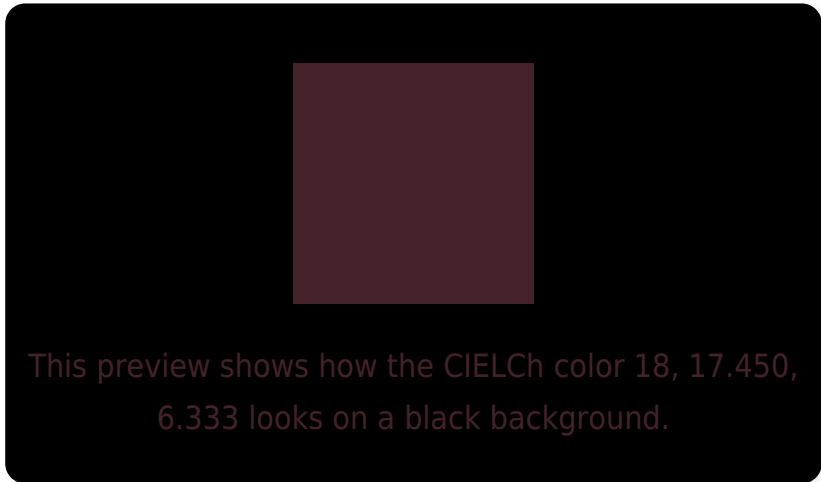
Large Text (above 18pt) WCAG AA ✓ Pass

Any Text WCAG AA ✓ Pass

Large Text (above 18pt) WCAG AAA ✓ Pass

Any Text WCAG AAA ✓ Pass

Black Background



Color Contrast Check

Large Text (above 18pt) WCAG AA × Fail

Any Text WCAG AA × Fail

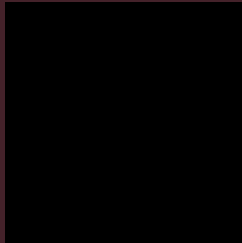
Large Text (above 18pt) WCAG AAA × Fail

Any Text WCAG AAA × Fail

If you want to check with other color combinations, try the [Color Contrast Checker](#).

CIELCh 18, 17.450, 6.333

Background



This preview shows how black text looks on a background with the CIELCh color 18, 17.450, 6.333.



This preview shows how white text looks on a background with the CIELCh color 18, 17.450, 6.333.

Color Blindness Simulation

Color vision deficiency is a very complex topic, and I could not describe the different causes any better than Wikipedia does, so if you want to learn more, you should check out their [article about color blindness](#).

Dichromacy



Original Color

18, 17.450, 6.333

Protanopia

18, 2.806, 300.344

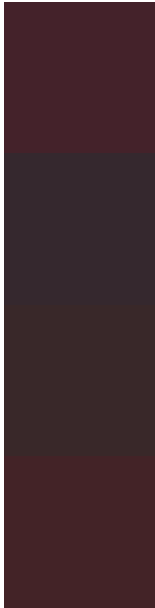
Deuteranopia

18, 4.497, 47.244



Tritanopia
18, 16.417, 19.024

Trichromacy



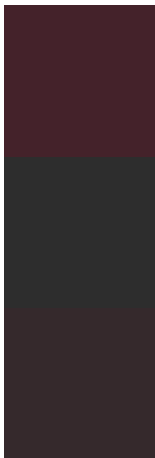
Original Color
18, 17.450, 6.333

Protanomaly
18, 7.465, 347.659

Deuteranomaly
18, 8.513, 16.838

Tritanomaly
18, 16.311, 14.293

Monochromacy



Original Color
18, 17.450, 6.333

Achromatopsia
18, 0.003, 296.813

Achromatomaly
18, 6.181, 1.444

CSS Examples

Text

The CSS property to change the color of the text to CIELCh 18, 17.450, 6.333 is called "color". The color property can be set on classes, ids or directly on the HTML element.

This example shows how text in the color `rgb(68, 34, 42)` looks like.

```
.text, #text, p{  
    color:rgb(68, 34, 42)  
}
```

If you want to add a text shadow in that color use the text-shadow property, you can generate a text shadow directly with our [CSS Text Shadow Generator](#).

Here you see how black text with a 4 pixel rgb(68, 34, 42) colored shadow looks like.

```
.shadow{ text-shadow: 4px 4px 2px rgb(68, 34, 42) }
```

Border

The CSS property to change the border of an element to CIELCh 18, 17.450, 6.333 is called "border". The border property can be set on classes, ids or directly on the HTML element.

This example shows the color as border, it can be applied via the CSS property "border" or "border-color".

```
.border, #border, table{ border:4px solid rgb(68, 34, 42) }
```

If only the border color should be changed use the property `border-color`.

```
.border{ border-color:rgb(68, 34, 42) }
```

If you want to add a box shadow in that color use:

Here you see how a box with a 4 pixel `rgb(68, 34, 42)` colored shadow looks like.

```
.boxshadow{ -moz-box-shadow:4px 4px 4px  
4px rgb(68, 34, 42); -webkit-box-  
shadow:4px 4px 4px 4px rgb(68, 34, 42);  
box-shadow:4px 4px 4px 4px rgb(68, 34, 42)  
}
```

Background

The CSS property to change the background color of an element to CIELCh 18, 17.450, 6.333 is called "background". The background property can be set on classes, ids or directly on the HTML element.

```
.background, #background, body{  
background: rgb(68, 34, 42) }
```

If only the background color should be changed can be used:

```
.background{ background-color: rgb(68, 34,  
42) }
```

This example shows the color as background, it is applied via the CSS property "background".

To optimize and compress your CSS code, you can use our [online CSS compressor and optimizer](#) based on csstidy. If you want to create a linear or radial gradient as background or border, check our [CSS Gradient Generator](#).

Hey! You found this booklet interesting? Support Converting Colors with the new Membership Option!

The pro membership hides all ads, plus gives you double the colors in the color bucket, and more awesome pro features!

[Learn more, Memberships starting at \\$2.50/m!](#)

**Follow me
on Twitter!**

@ConvertingColor