

Converting Colors

CIELCh(18, 17.924, 16.784)

Have a look what the booklet for
CIELCh(18, 17.924, 16.784) contains.

CIELCh(18, 17.930, 17.815)	3
<i>Conversions</i>	4
<i>Details</i>	6
<i>Harmonies</i>	11
<i>Previews</i>	20
<i>Color Blindness Simulation</i>	23
<i>CSS Examples</i>	26

Color

CIELCh(18, 17.930, 17.815)

Conversions

Conversions Part 1

Format	Color
Hex	452225
RGB	69, 34, 37
RGB Percent	27%, 13%, 15%
CMY	0.7305, 0.8676, 0.8558
CMYK	0.00, 0.51, 0.47, 0.73
HSL	355°, 34%, 20%
HSV	355°, 51%, 27%
XYZ	3.3308, 2.5180, 2.0418
YIQ	44.8070, 19.8970, 8.3530

Conversions

Conversions Part 2

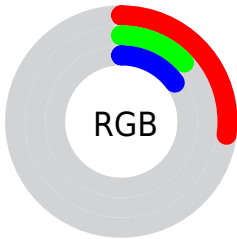
Format	Color
RYB	69, 34, 37
Decimal	4530725
CIELab	18.00, 17.07, 5.49
CIElCh	18, 17.930, 17.815
Yxy	2.5180, 0.4221, 0.3191
Android (android.graphics.Color)	4282720805 (0xFF452225)
YUV	44.8070, -3.8489, 21.2173
Hunter-Lab	15.8683, 9.6984, 3.4789

Details

The CIELCh color **18, 17.930, 17.815** is a dark color, and the websafe version is hex **663333**. A complement of this color would be **27, 13.697, 188.918**, and the grayscale version is **18, 0.003, 296.813**.

A 20% lighter version of the original color is **38, 18.032, 16.453**, and **1, 6.390, 19.405** is the 20% darker color. If you saturate the color by 10%, you get **16, 21.829, 19.774**, and if you desaturate by 10%, it is **20, 14.085, 16.242**.

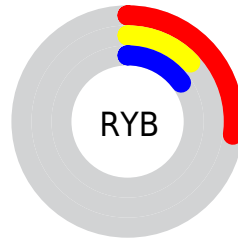
Distribution



Red (27%)

Green (13%)

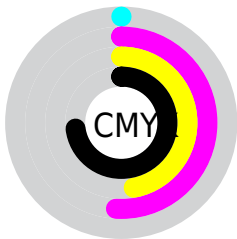
Blue (15%)



Red (27%)

Yellow (13%)

Blue (15%)

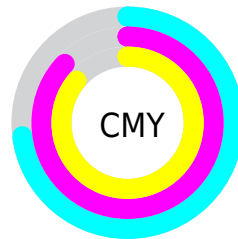


Cyan (0%)

Magenta (51%)

Yellow (47%)

Black (73%)



Cyan (73%)

Magenta (87%)

Yellow (86%)

Brightness & Saturation Gradients

These gradients show how the CIELCh color 18, 17.930, 17.815 changes by changing the brightness by 10 percent. The first figure shows a shift by +10% for each color and the second figure -10%.

Similar to the brightness gradients but the following saturation gradients show a change of the CIELCh color 18, 17.930, 17.815 by changing the saturation by 10% instead.

18, 17.930, 17.815

18, 17.930, 17.815

100, 17.930,
17.815

8, 17.930, 17.815

38, 17.930, 17.815

0, 17.930, 17.815

48, 17.930, 17.815

58, 17.930, 17.815

68, 17.930, 17.815

78, 17.930, 17.815

88, 17.930, 17.815

98, 17.930, 17.815

18, 17.930, 17.815

18, 17.930, 17.815

16, 21.829, 19.774

20, 14.085, 16.242

15, 25.694, 22.199

22, 10.366, 14.962

13, 29.291, 24.633

24, 6.812, 13.907

12, 32.236, 25.790

27, 3.445, 13.007

11, 34.837, 25.483

29, 0.270, 11.424

31, 2.718, 191.833

34, 5.530, 191.256

36, 8.179, 190.782

38, 10.680,
190.370

Harmonies

Complementary

The Complementary color scheme is a pair of colors which are on the opposite of each other on the color wheel.



18, 17.930, 17.815



27, 13.697, 188.918

Rectangle

The Rectangle color scheme consists of four colors that form a rectangle on the color wheel.



18, 17.930, 17.815



18, 17.930, 67.815



18, 17.930, 197.815



18, 17.930, 247.815

Sweetspot

The Sweet Spot groups the original color and five complimentary colors.



18, 17.929, 17.818



34, 5.987, 13.420



19, 26.733, 323.817



16, 4.132, 13.509



71, 0.009, 296.813



19, 0.004, 296.813

Same Dimension

The Same Dimension uses a secret algorithm to generate beautiful new colors.



18, 17.929, 17.818



22, 27.268, 20.355



22, 14.773, 59.483



12, 1.697, 12.800



18, 46.659, 31.795



47, 91.355, 37.056

Inverse Universe

The Inverse Universe completely reimagines the original color for something new.



18, 17.929, 17.818



22, 27.268, 20.355



22, 11.900, 251.239



12, 1.697, 12.800



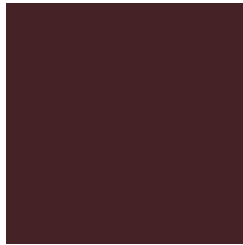
18, 46.659, 31.795



47, 91.355, 37.056

Previews

White Background



This preview shows how the CIELCh color 18, 17.930, 17.815 looks on a white background.

Color Contrast Check

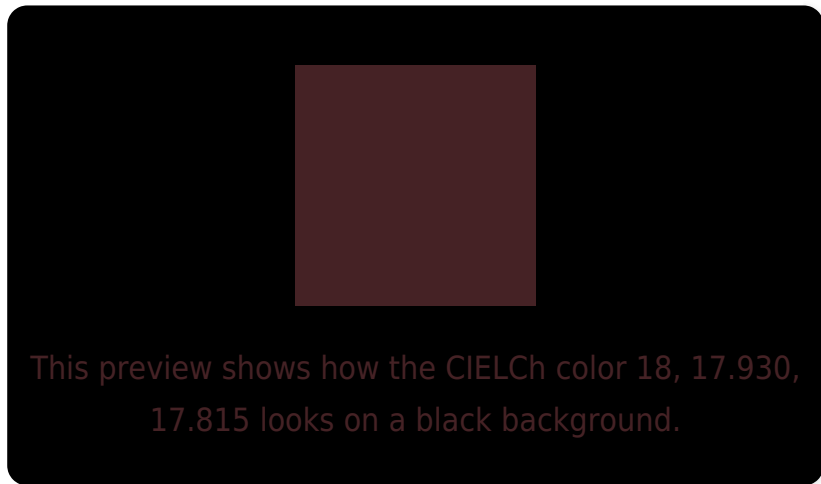
Large Text (above 18pt) WCAG AA ✓ Pass

Any Text WCAG AA ✓ Pass

Large Text (above 18pt) WCAG AAA ✓ Pass

Any Text WCAG AAA ✓ Pass

Black Background



Color Contrast Check

Large Text (above 18pt) WCAG AA × Fail

Any Text WCAG AA × Fail

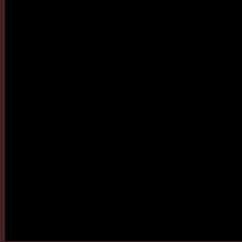
Large Text (above 18pt) WCAG AAA × Fail

Any Text WCAG AAA × Fail

If you want to check with other color combinations, try the [Color Contrast Checker](#).

CIELCh 18, 17.930, 17.815

Background



This preview shows how black text looks on a background with the CIELCh color 18, 17.930, 17.815.

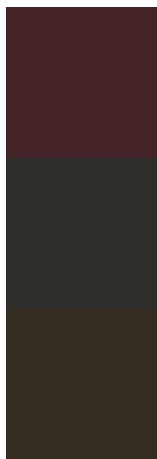


This preview shows how white text looks on a background with the CIELCh color 18, 17.930, 17.815.

Color Blindness Simulation

Color vision deficiency is a very complex topic, and I could not describe the different causes any better than Wikipedia does, so if you want to learn more, you should check out their [article about color blindness](#).

Dichromacy



Original Color

18, 17.930, 17.815

Protanopia

18, 2.108, 96.368

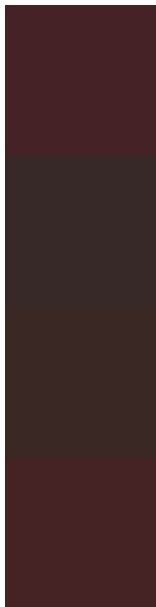
Deuteranopia

18, 7.234, 68.891



Tritanopia
18, 18.019, 19.956

Trichromacy



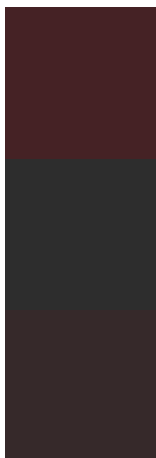
Original Color
18, 17.930, 17.815

Protanomaly
18, 6.560, 26.808

Deuteranomaly
18, 9.786, 37.483

Tritanomaly
18, 18.019, 19.956

Monochromacy



Original Color
18, 17.930, 17.815

Achromatopsia
18, 0.003, 296.813

Achromatomaly
18, 6.455, 14.826

CSS Examples

Text

The CSS property to change the color of the text to CIELCh 18, 17.930, 17.815 is called "color". The color property can be set on classes, ids or directly on the HTML element.

This example shows how text in the color `rgb(69, 34, 37)` looks like.

```
.text, #text, p{  
    color:rgb(69, 34, 37)  
}
```

If you want to add a text shadow in that color use the text-shadow property, you can generate a text shadow directly with our [CSS Text Shadow Generator](#).

Here you see how black text with a 4 pixel rgb(69, 34, 37) colored shadow looks like.

```
.shadow{ text-shadow: 4px 4px 2px rgb(69, 34, 37) }
```

Border

The CSS property to change the border of an element to CIELCh 18, 17.930, 17.815 is called "border". The border property can be set on classes, ids or directly on the HTML element.

This example shows the color as border, it can be applied via the CSS property "border" or "border-color".

```
.border, #border, table{ border:4px solid rgb(69, 34, 37) }
```

If only the border color should be changed use the property border-color.

```
.border{ border-color:rgb(69, 34, 37) }
```

If you want to add a box shadow in that color use:

Here you see how a box with a 4 pixel rgb(69, 34, 37) colored shadow looks like.

```
.boxshadow{ -moz-box-shadow:4px 4px 4px  
4px rgb(69, 34, 37); -webkit-box-  
shadow:4px 4px 4px 4px rgb(69, 34, 37);  
box-shadow:4px 4px 4px 4px rgb(69, 34, 37)  
}
```

Background

The CSS property to change the background color of an element to CIELCh 18, 17.930, 17.815 is called "background". The background property can be set on classes, ids or directly on the HTML element.

```
.background, #background, body{  
background: rgb(69, 34, 37) }
```

If only the background color should be changed can be used:

```
.background{ background-color: rgb(69, 34,  
37) }
```

This example shows the color as background, it is applied via the CSS property "background".

To optimize and compress your CSS code, you can use our [online CSS compressor and optimizer](#) based on csstidy. If you want to create a linear or radial gradient as background or border, check our [CSS Gradient Generator](#).

Hey! You found this booklet interesting? Support Converting Colors with the new Membership Option!

The pro membership hides all ads, plus gives you double the colors in the color bucket, and more awesome pro features!

[Learn more, Memberships starting at \\$2.50/m!](#)

**Follow me
on Twitter!**

@ConvertingColor