

Converting Colors

CIELCh(18, 19.551, 15.632)

Have a look what the booklet for
CIELCh(18, 19.551, 15.632) contains.

CIELCh(18, 19.931, 15.431)	3
<i>Conversions</i>	4
<i>Details</i>	6
<i>Harmonies</i>	11
<i>Previews</i>	20
<i>Color Blindness Simulation</i>	23
<i>CSS Examples</i>	26

Color

CIELCh(18, 19.931, 15.431)

Conversions

Conversions Part 1

Format	Color
Hex	472025
RGB	71, 32, 37
RGB Percent	28%, 13%, 15%
CMY	0.7211, 0.8740, 0.8545
CMYK	0.00, 0.55, 0.48, 0.72
HSL	352°, 38%, 20%
HSV	352°, 55%, 28%
XYZ	3.4634, 2.5180, 2.0629
YIQ	44.2310, 21.6390, 9.8230

Conversions

Conversions Part 2

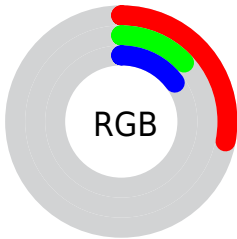
Format	Color
RYB	71, 32, 37
Decimal	4661285
CIELab	18.00, 19.21, 5.30
CIElCh	18, 19.931, 15.431
Yxy	2.5180, 0.4305, 0.3130
Android (android.graphics.Color)	4282851365 (0xFF472025)
YUV	44.2310, -3.5649, 23.4764
Hunter-Lab	15.8683, 11.1894, 3.4001

Details

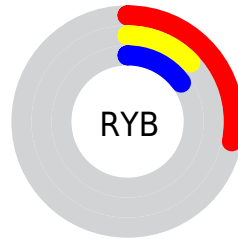
The CIELCh color **18, 19.931, 15.431** is a dark color, and the websafe version is hex **663333**. A complement of this color would be **27, 15.309, 184.684**, and the grayscale version is **18, 0.003, 296.813**.

A 20% lighter version of the original color is **38, 19.916, 15.635**, and **2, 7.329, 19.405** is the 20% darker color. If you saturate the color by 10%, you get **16, 23.818, 17.617**, and if you desaturate by 10%, it is **20, 16.023, 13.669**.

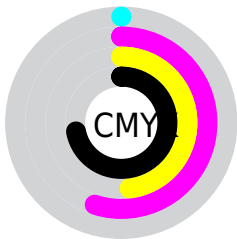
Distribution



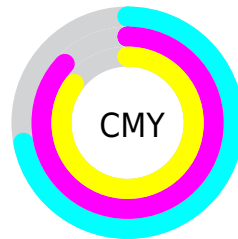
- Red (28%)
- Green (13%)
- Blue (15%)



- Red (28%)
- Yellow (13%)
- Blue (15%)



- Cyan (0%)
- Magenta (55%)
- Yellow (48%)
- Black (72%)



- Cyan (72%)
- Magenta (87%)
- Yellow (85%)

Brightness & Saturation Gradients

These gradients show how the CIELCh color 18, 19.931, 15.431 changes by changing the brightness by 10 percent. The first figure shows a shift by +10% for each color and the second figure -10%.

Similar to the brightness gradients but the following saturation gradients show a change of the CIELCh color 18, 19.931, 15.431 by changing the saturation by 10% instead.

18, 19.931, 15.431

18, 19.931, 15.431

100, 19.931,
15.431

8, 19.931, 15.431

0, 19.931, 15.431

38, 19.931, 15.431

48, 19.931, 15.431

58, 19.931, 15.431

68, 19.931, 15.431

78, 19.931, 15.431

88, 19.931, 15.431

98, 19.931, 15.431

■ 18, 19.931, 15.431

■ 18, 19.931, 15.431

■ 16, 23.818, 17.617

■ 20, 16.023, 13.669

■ 15, 27.580, 20.317

■ 22, 12.185, 12.230

■ 13, 31.015, 23.206

■ 24, 8.475, 11.040

■ 12, 33.976, 24.567

■ 27, 4.931, 10.034

■ 12, 35.477, 24.483

■ 29, 1.566, 9.090

■ 31, 1.616, 188.694

■ 34, 4.621, 187.972

■ 36, 7.460, 187.407

■ 39, 10.147,
186.916

Harmonies

Complementary

The Complementary color scheme is a pair of colors which are on the opposite of each other on the color wheel.



18, 19.931, 15.431



27, 15.309, 184.684

Rectangle

The Rectangle color scheme consists of four colors that form a rectangle on the color wheel.



18, 19.931, 15.431



18, 19.931, 65.431



18, 19.931, 195.431



18, 19.931, 245.431

Sweetspot

The Sweet Spot groups the original color and five complimentary colors.



18, 19.930, 15.434



34, 6.598, 10.202



19, 29.324, 322.943



16, 4.399, 10.279



71, 0.009, 296.813



19, 0.004, 296.813

Same Dimension

The Same Dimension uses a secret algorithm to generate beautiful new colors.



18, 19.930, 15.434



22, 30.019, 18.550



22, 16.636, 55.746



13, 1.825, 9.458



19, 46.888, 30.281



48, 89.896, 34.967

Inverse Universe

The Inverse Universe completely reimagines the original color for something new.



18, 19.930, 15.434



22, 30.019, 18.550



23, 12.732, 247.579



13, 1.825, 9.458



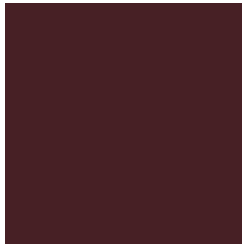
19, 46.888, 30.281



48, 89.896, 34.967

Previews

White Background



This preview shows how the CIE LCh color 18, 19.931, 15.431 looks on a white background.

Color Contrast Check

Large Text (above 18pt) WCAG AA ✓ Pass

Any Text WCAG AA ✓ Pass

Large Text (above 18pt) WCAG AAA ✓ Pass

Any Text WCAG AAA ✓ Pass

Black Background



Color Contrast Check

Large Text (above 18pt) WCAG AA × Fail

Any Text WCAG AA × Fail

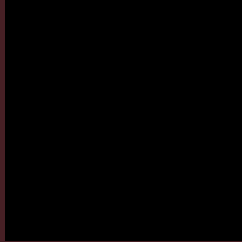
Large Text (above 18pt) WCAG AAA × Fail

Any Text WCAG AAA × Fail

If you want to check with other color combinations, try the [Color Contrast Checker](#).

CIELCh 18, 19.931, 15.431

Background



This preview shows how black text looks on a background with the CIELCh color 18, 19.931, 15.431.

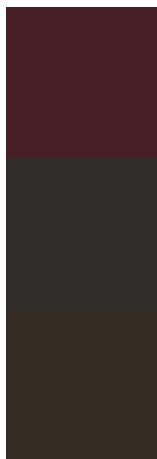


This preview shows how white text looks on a background with the CIELCh color 18, 19.931, 15.431.

Color Blindness Simulation

Color vision deficiency is a very complex topic, and I could not describe the different causes any better than Wikipedia does, so if you want to learn more, you should check out their [article about color blindness](#).

Dichromacy



Original Color

18, 19.931, 15.431

Protanopia

19, 1.447, 90.410

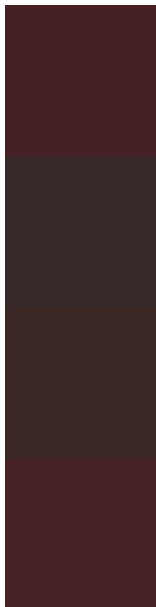
Deuteranopia

18, 7.234, 68.891



Tritanopia
18, 19.622, 20.831

Trichromacy



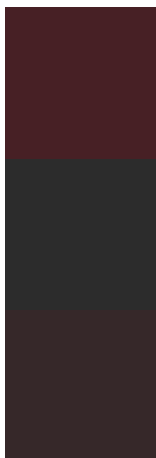
Original Color
18, 19.931, 15.431

Protanomaly
18, 7.495, 15.948

Deuteranomaly
18, 10.621, 32.760

Tritanomaly
18, 19.513, 18.874

Monochromacy



Original Color
18, 19.931, 15.431

Achromatopsia
18, 0.003, 296.813

Achromatomaly
18, 6.987, 15.434

CSS Examples

Text

The CSS property to change the color of the text to CIELCh 18, 19.931, 15.431 is called "color". The color property can be set on classes, ids or directly on the HTML element.

This example shows how text in the color `rgb(71, 32, 37)` looks like.

```
.text, #text, p{  
    color:rgb(71, 32, 37)  
}
```

If you want to add a text shadow in that color use the text-shadow property, you can generate a text shadow directly with our [CSS Text Shadow Generator](#).

Here you see how black text with a 4 pixel rgb(71, 32, 37) colored shadow looks like.

```
.shadow{ text-shadow: 4px 4px 2px rgb(71, 32, 37) }
```

Border

The CSS property to change the border of an element to CIELCh 18, 19.931, 15.431 is called "border". The border property can be set on classes, ids or directly on the HTML element.

This example shows the color as border, it can be applied via the CSS property "border" or "border-color".

```
.border, #border, table{ border:4px solid rgb(71, 32, 37) }
```

If only the border color should be changed use the property border-color.

```
.border{ border-color:rgb(71, 32, 37) }
```

If you want to add a box shadow in that color use:

Here you see how a box with a 4 pixel rgb(71, 32, 37) colored shadow looks like.

```
.boxshadow{ -moz-box-shadow:4px 4px 4px  
4px rgb(71, 32, 37); -webkit-box-  
shadow:4px 4px 4px 4px rgb(71, 32, 37);  
box-shadow:4px 4px 4px 4px rgb(71, 32, 37)  
}
```

Background

The CSS property to change the background color of an element to CIELCh 18, 19.931, 15.431 is called "background". The background property can be set on classes, ids or directly on the HTML element.

```
.background, #background, body{  
background: rgb(71, 32, 37) }
```

If only the background color should be changed can be used:

```
.background{ background-color: rgb(71, 32,  
37) }
```

This example shows the color as background, it is applied via the CSS property "background".

To optimize and compress your CSS code, you can use our [online CSS compressor and optimizer](#) based on csstidy. If you want to create a linear or radial gradient as background or border, check our [CSS Gradient Generator](#).

Hey! You found this booklet interesting? Support Converting Colors with the new Membership Option!

The pro membership hides all ads, plus gives you double the colors in the color bucket, and more awesome pro features!

[Learn more, Memberships starting at \\$2.50/m!](#)

**Follow me
on Twitter!**

@ConvertingColor