

Converting Colors

CIELCh(18, 21.241, 26.224)

Have a look what the booklet for
CIELCh(18, 21.241, 26.224) contains.

CIELCh(18, 21.223, 26.809)	3
<i>Conversions</i>	4
<i>Details</i>	6
<i>Harmonies</i>	11
<i>Previews</i>	20
<i>Color Blindness Simulation</i>	23
<i>CSS Examples</i>	26

Color

CIELCh(18, 21.223, 26.809)

Conversions

Conversions Part 1

Format	Color
Hex	48201F
RGB	72, 32, 31
RGB Percent	28%, 13%, 12%
CMY	0.7173, 0.8742, 0.8781
CMYK	0.00, 0.55, 0.57, 0.72
HSL	1°, 40%, 20%
HSV	1°, 57%, 28%
XYZ	3.4464, 2.5180, 1.6060
YIQ	43.8460, 24.1610, 8.1690

Conversions

Conversions Part 2

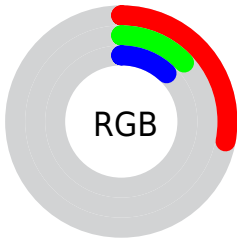
Format	Color
R_{YB}	72, 32, 31
Decimal	4726815
CIE _{Lab}	18.00, 18.94, 9.57
CIE _{LCh}	18, 21.223, 26.809
Yxy	2.5180, 0.4552, 0.3326
Android (android.graphics.Color)	4282916895 (0xFF48201F)
YUV	43.8460, -6.3331, 24.6911
Hunter-Lab	15.8683, 10.9989, 5.1071

Details

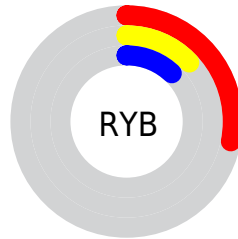
The CIELCh color **18, 21.223, 26.809** is a dark color, and the websafe version is hex **663333**. A complement of this color would be **28, 14.524, 199.807**, and the grayscale version is **18, 0.003, 296.813**.

A 20% lighter version of the original color is **38, 21.326, 25.873**, and **2, 7.329, 19.405** is the 20% darker color. If you saturate the color by 10%, you get **16, 25.555, 28.753**, and if you desaturate by 10%, it is **20, 16.996, 25.271**.

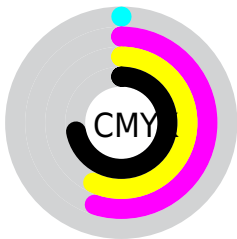
Distribution



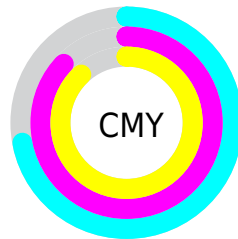
- Red (28%)
- Green (13%)
- Blue (12%)



- Red (28%)
- Yellow (13%)
- Blue (12%)



- Cyan (0%)
- Magenta (55%)
- Yellow (57%)
- Black (72%)



- Cyan (72%)
- Magenta (87%)
- Yellow (88%)

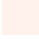
Brightness & Saturation Gradients

These gradients show how the CIELCh color 18, 21.223, 26.809 changes by changing the brightness by 10 percent. The first figure shows a shift by +10% for each color and the second figure -10%.

Similar to the brightness gradients but the following saturation gradients show a change of the CIELCh color 18, 21.223, 26.809 by changing the saturation by 10% instead.

 18, 21.223, 26.809

 18, 21.223, 26.809

 100, 21.223,
26.809

 8, 21.223, 26.809

 38, 21.223, 26.809

 0, 21.223, 26.809

 48, 21.223, 26.809

 58, 21.223, 26.809

 68, 21.223, 26.809

 78, 21.223, 26.809

 88, 21.223, 26.809

 98, 21.223, 26.809

■ 18, 21.223, 26.809

■ 18, 21.223, 26.809

■ 16, 25.555, 28.753

■ 20, 16.996, 25.271

■ 15, 29.709, 30.547

■ 22, 12.949, 24.060

■ 13, 32.991, 30.967

■ 24, 9.120, 23.110

■ 12, 35.822, 31.107

■ 27, 5.529, 22.357

■ 12, 36.735, 31.067

■ 29, 2.177, 21.708

■ 31, 0.947, 201.662

■ 34, 3.857, 201.093

■ 36, 6.574, 200.783

■ 39, 9.117, 200.548

Harmonies

Complementary

The Complementary color scheme is a pair of colors which are on the opposite of each other on the color wheel.



18, 21.223, 26.809



28, 14.524, 199.807

Rectangle

The Rectangle color scheme consists of four colors that form a rectangle on the color wheel.



18, 21.223, 26.809



18, 21.223, 76.809



18, 21.223, 206.809



18, 21.223, 256.809

Sweetspot

The Sweet Spot groups the original color and five complimentary colors.



18, 21.222, 26.812



35, 6.975, 22.411



19, 31.013, 327.562



17, 4.719, 22.470



72, 0.009, 296.813



20, 0.004, 296.813

Same Dimension

The Same Dimension uses a secret algorithm to generate beautiful new colors.



18, 21.222, 26.812



22, 32.715, 29.612



24, 17.790, 70.697



13, 1.756, 21.820



19, 49.025, 36.323



48, 95.446, 40.200

Inverse Universe

The Inverse Universe completely reimagines the original color for something new.



28, 14.524, 199.807



36, 20.095, 199.700



21, 15.600, 266.966



14, 1.673, 201.249



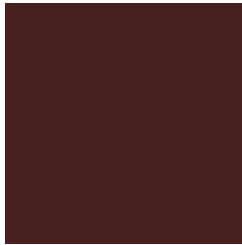
37, 24.321, 200.071



80, 44.324, 200.357

Previews

White Background



This preview shows how the CIELCh color 18, 21.223, 26.809 looks on a white background.

Color Contrast Check

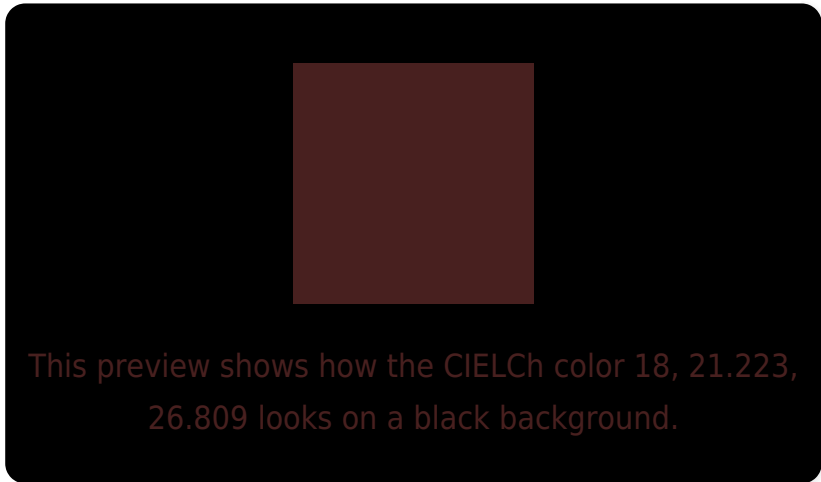
Large Text (above 18pt) WCAG AA ✓ Pass

Any Text WCAG AA ✓ Pass

Large Text (above 18pt) WCAG AAA ✓ Pass

Any Text WCAG AAA ✓ Pass

Black Background



Color Contrast Check

Large Text (above 18pt) WCAG AA × Fail

Any Text WCAG AA × Fail

Large Text (above 18pt) WCAG AAA × Fail

Any Text WCAG AAA × Fail

If you want to check with other color combinations, try the [Color Contrast Checker](#).

CIELCh 18, 21.223, 26.809

Background



This preview shows how black text looks on a background with the CIELCh color 18, 21.223, 26.809.



This preview shows how white text looks on a background with the CIELCh color 18, 21.223, 26.809.

Color Blindness Simulation

Color vision deficiency is a very complex topic, and I could not describe the different causes any better than Wikipedia does, so if you want to learn more, you should check out their [article about color blindness](#).

Dichromacy



Original Color

18, 21.223, 26.809

Protanopia

18, 5.564, 98.391

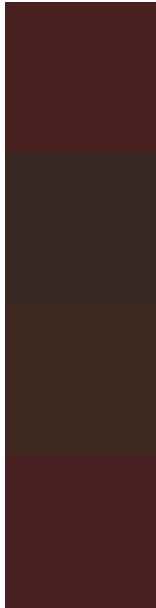
Deuteranopia

18, 11.339, 76.484



Tritanopia
18, 20.715, 21.432

Trichromacy



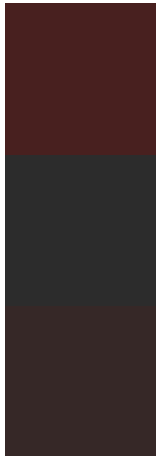
Original Color
18, 21.223, 26.809

Protanomaly
18, 9.077, 43.110

Deuteranomaly
18, 13.577, 48.249

Tritanomaly
18, 20.861, 23.256

Monochromacy



Original Color
18, 21.223, 26.809

Achromatopsia
18, 0.003, 296.813

Achromatomaly
18, 7.104, 26.511

CSS Examples

Text

The CSS property to change the color of the text to CIELCh 18, 21.223, 26.809 is called "color". The color property can be set on classes, ids or directly on the HTML element.

This example shows how text in the color `rgb(72, 32, 31)` looks like.

```
.text, #text, p{  
    color:rgb(72, 32, 31)  
}
```

If you want to add a text shadow in that color use the text-shadow property, you can generate a text shadow directly with our [CSS Text Shadow Generator](#).

Here you see how black text with a 4 pixel rgb(72, 32, 31) colored shadow looks like.

```
.shadow{ text-shadow: 4px 4px 2px rgb(72, 32, 31) }
```

Border

The CSS property to change the border of an element to CIELCh 18, 21.223, 26.809 is called "border". The border property can be set on classes, ids or directly on the HTML element.

This example shows the color as border, it can be applied via the CSS property "border" or "border-color".

```
.border, #border, table{ border:4px solid rgb(72, 32, 31) }
```

If only the border color should be changed use the property `border-color`.

```
.border{ border-color:rgb(72, 32, 31) }
```

If you want to add a box shadow in that color use:

Here you see how a box with a 4 pixel `rgb(72, 32, 31)` colored shadow looks like.

```
.boxshadow{ -moz-box-shadow:4px 4px 4px  
4px rgb(72, 32, 31); -webkit-box-  
shadow:4px 4px 4px 4px rgb(72, 32, 31);  
box-shadow:4px 4px 4px 4px rgb(72, 32, 31)  
}
```

Background

The CSS property to change the background color of an element to CIELCh 18, 21.223, 26.809 is called "background". The background property can be set on classes, ids or directly on the HTML element.

```
.background, #background, body{  
background: rgb(72, 32, 31) }
```

If only the background color should be changed can be used:

```
.background{ background-color: rgb(72, 32,  
31) }
```

This example shows the color as background, it is applied via the CSS property "background".

To optimize and compress your CSS code, you can use our [online CSS compressor and optimizer](#) based on csstidy. If you want to create a linear or radial gradient as background or border, check our [CSS Gradient Generator](#).

Hey! You found this booklet
interesting? Support Converting
Colors with the new Membership
Option!

The pro membership hides all ads, plus gives you
double the colors in the color bucket, and more
awesome pro features!

[Learn more, Memberships starting at \\$2.50/m!](#)

**Follow me
on Twitter!**

@ConvertingColor