

Converting Colors

CIELCh(18, 24.275, 33.760)

Have a look what the booklet for
CIELCh(18, 24.275, 33.760) contains.

CIELCh(18, 23.876, 33.324)	3
<i>Conversions</i>	4
<i>Details</i>	6
<i>Harmonies</i>	11
<i>Previews</i>	20
<i>Color Blindness Simulation</i>	23
<i>CSS Examples</i>	26

Color

CIELCh(18, 23.876, 33.324)

Conversions

Conversions Part 1

Format	Color
Hex	4A1F1A
RGB	74, 31, 26
RGB Percent	29%, 12%, 10%
CMY	0.7095, 0.8781, 0.8978
CMYK	0.00, 0.58, 0.65, 0.71
HSL	6°, 48%, 20%
HSV	6°, 65%, 29%
XYZ	3.5098, 2.5180, 1.2824
YIQ	43.2870, 27.2330, 7.5610

Conversions

Conversions Part 2

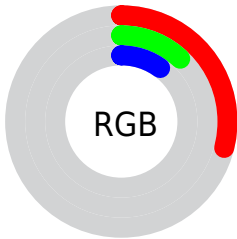
Format	Color
R_{YB}	74, 32, 26
Decimal	4857626
CIE _{Lab}	18.00, 19.95, 13.12
CIE _{LCh}	18, 23.876, 33.324
Yxy	2.5180, 0.4801, 0.3445
Android (android.graphics.Color)	4283047706 (0xFF4A1F1A)
YUV	43.2870, -8.5225, 26.9353
Hunter-Lab	15.8683, 11.7119, 6.3164

Details

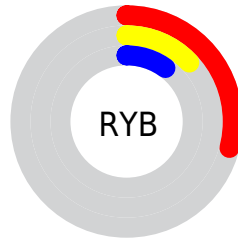
The CIELCh color **18, 23.876, 33.324** is a dark color, and the websafe version is hex **663333**. A complement of this color would be **27, 15.017, 209.920**, and the grayscale version is **18, 0.003, 296.813**.

A 20% lighter version of the original color is **38, 24.177, 32.867**, and **2, 7.843, 16.458** is the 20% darker color. If you saturate the color by 10%, you get **16, 28.251, 34.802**, and if you desaturate by 10%, it is **20, 19.577, 32.047**.

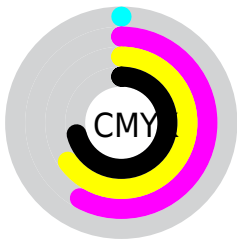
Distribution



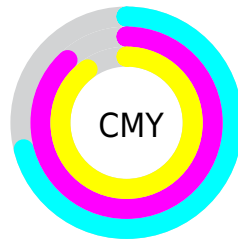
- Red (29%)
- Green (12%)
- Blue (10%)



- Red (29%)
- Yellow (13%)
- Blue (10%)



- Cyan (0%)
- Magenta (58%)
- Yellow (65%)
- Black (71%)



- Cyan (71%)
- Magenta (88%)
- Yellow (90%)


Brightness & Saturation Gradients

These gradients show how the CIELCh color 18, 23.876, 33.324 changes by changing the brightness by 10 percent. The first figure shows a shift by +10% for each color and the second figure -10%.

Similar to the brightness gradients but the following saturation gradients show a change of the CIELCh color 18, 23.876, 33.324 by changing the saturation by 10% instead.

 18, 23.876, 33.324

 18, 23.876, 33.324

 100, 23.876,
33.324

 8, 23.876, 33.324

 38, 23.876, 33.324

 0, 23.876, 33.324

 48, 23.876, 33.324

 58, 23.876, 33.324

 68, 23.876, 33.324

 78, 23.876, 33.324

 88, 23.876, 33.324

 98, 23.876, 33.324

■ 18, 23.876, 33.324

■ 18, 23.876, 33.324

■ 16, 28.251, 34.802

■ 20, 19.577, 32.047

■ 15, 31.952, 34.956

■ 22, 15.470, 31.055

■ 14, 34.923, 34.716

■ 24, 11.593, 30.306

■ 13, 36.342, 34.909

■ 26, 7.963, 29.751

■ 28, 4.580, 29.339

■ 30, 1.434, 28.945

■ 33, 1.491, 209.151

■ 35, 4.215, 208.939

■ 37, 6.757, 208.877

Harmonies

Complementary

The Complementary color scheme is a pair of colors which are on the opposite of each other on the color wheel.



18, 23.876, 33.324



27, 15.017, 209.920

Rectangle

The Rectangle color scheme consists of four colors that form a rectangle on the color wheel.



18, 23.876, 33.324



18, 23.876, 83.324



18, 23.876, 213.324



18, 23.876, 263.324

Sweetspot

The Sweet Spot groups the original color and five complimentary colors.



18, 23.875, 33.327



36, 7.474, 29.528



19, 33.480, 330.621



16, 5.102, 29.589



72, 0.009, 296.813



20, 0.004, 296.813

Same Dimension

The Same Dimension uses a secret algorithm to generate beautiful new colors.



18, 23.875, 33.327



22, 37.328, 36.059



24, 21.636, 77.510



14, 1.732, 29.121



20, 49.008, 38.822



49, 94.961, 41.051

Inverse Universe

The Inverse Universe completely reimagines the original color for something new.



27, 15.017, 209.920



34, 20.349, 211.151



18, 20.390, 277.229



15, 1.648, 209.023



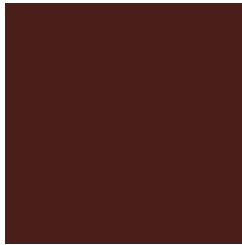
35, 22.799, 213.922



76, 41.043, 215.357

Previews

White Background



This preview shows how the CIELCh color 18, 23.876, 33.324 looks on a white background.

Color Contrast Check

Large Text (above 18pt) WCAG AA ✓ Pass

Any Text WCAG AA ✓ Pass

Large Text (above 18pt) WCAG AAA ✓ Pass

Any Text WCAG AAA ✓ Pass

Black Background



This preview shows how the CIE LCh color 18, 23.876, 33.324 looks on a black background.

Color Contrast Check

Large Text (above 18pt) WCAG AA × Fail

Any Text WCAG AA × Fail

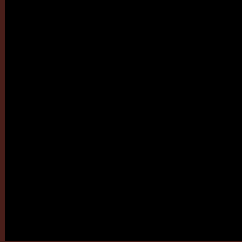
Large Text (above 18pt) WCAG AAA × Fail

Any Text WCAG AAA × Fail

If you want to check with other color combinations, try the [Color Contrast Checker](#).

CIELCh 18, 23.876, 33.324

Background



This preview shows how black text looks on a background with the CIELCh color 18, 23.876, 33.324.

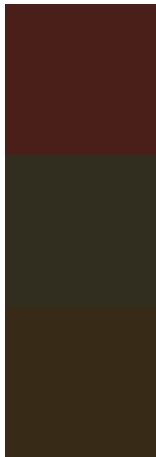


This preview shows how white text looks on a background with the CIELCh color 18, 23.876, 33.324.

Color Blindness Simulation

Color vision deficiency is a very complex topic, and I could not describe the different causes any better than Wikipedia does, so if you want to learn more, you should check out their [article about color blindness](#).

Dichromacy



Original Color

18, 23.876, 33.324

Protanopia

18, 9.775, 95.406

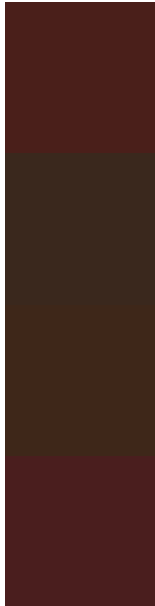
Deuteranopia

18, 14.636, 80.165



Tritanopia
18, 22.899, 22.605

Trichromacy



Original Color

18, 23.876, 33.324

Protanomaly

18, 12.516, 57.496

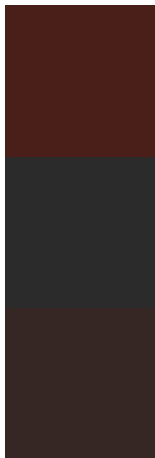
Deuteranomaly

18, 16.280, 56.708

Tritanomaly

18, 23.259, 25.853

Monochromacy



Original Color

18, 23.876, 33.324

Achromatopsia

18, 0.003, 296.813

Achromatomaly

17, 7.814, 31.205

CSS Examples

Text

The CSS property to change the color of the text to CIELCh 18, 23.876, 33.324 is called "color". The color property can be set on classes, ids or directly on the HTML element.

This example shows how text in the color `rgb(74, 31, 26)` looks like.

```
.text, #text, p{  
    color:rgb(74, 31, 26)  
}
```

If you want to add a text shadow in that color use the text-shadow property, you can generate a text shadow directly with our [CSS Text Shadow Generator](#).

Here you see how black text with a 4 pixel rgb(74, 31, 26) colored shadow looks like.

```
.shadow{ text-shadow: 4px 4px 2px rgb(74, 31, 26) }
```

Border

The CSS property to change the border of an element to CIELCh 18, 23.876, 33.324 is called "border". The border property can be set on classes, ids or directly on the HTML element.

This example shows the color as border, it can be applied via the CSS property "border" or "border-color".

```
.border, #border, table{ border:4px solid rgb(74, 31, 26) }
```

If only the border color should be changed use the property border-color.

```
.border{ border-color:rgb(74, 31, 26) }
```

If you want to add a box shadow in that color use:

Here you see how a box with a 4 pixel rgb(74, 31, 26) colored shadow looks like.

```
.boxshadow{ -moz-box-shadow:4px 4px 4px  
4px rgb(74, 31, 26); -webkit-box-  
shadow:4px 4px 4px 4px rgb(74, 31, 26);  
box-shadow:4px 4px 4px 4px rgb(74, 31, 26)  
}
```

Background

The CSS property to change the background color of an element to CIELCh 18, 23.876, 33.324 is called "background". The background property can be set on classes, ids or directly on the HTML element.

```
.background, #background, body{  
background: rgb(74, 31, 26) }
```

If only the background color should be changed can be used:

```
.background{ background-color: rgb(74, 31,  
26) }
```

This example shows the color as background, it is applied via the CSS property "background".

To optimize and compress your CSS code, you can use our [online CSS compressor and optimizer](#) based on csstidy. If you want to create a linear or radial gradient as background or border, check our [CSS Gradient Generator](#).

Hey! You found this booklet interesting? Support Converting Colors with the new Membership Option!

The pro membership hides all ads, plus gives you double the colors in the color bucket, and more awesome pro features!

[Learn more, Memberships starting at \\$2.50/m!](#)

**Follow me
on Twitter!**

@ConvertingColor