

Converting Colors

CIELCh(19, 15.046, 355.690)

Have a look what the booklet for
CIELCh(19, 15.046, 355.690)
contains.

CIELCh(19, 14.889, 356.371)	3
<i>Conversions</i>	4
<i>Details</i>	6
<i>Harmonies</i>	12
<i>Previews</i>	21
<i>Color Blindness Simulation</i>	24
<i>CSS Examples</i>	27

Color

CIELCh(19, 14.889, 356.371)

Conversions

Conversions Part 1

Format	Color
Hex	422630
RGB	66, 38, 48
RGB Percent	26%, 15%, 19%
CMY	0.7416, 0.8514, 0.8122
CMYK	0.00, 0.42, 0.27, 0.74
HSL	339°, 27%, 20%
HSV	339°, 42%, 26%
XYZ	3.4607, 2.7468, 3.1331
YIQ	47.5120, 13.4780, 9.0460

Conversions

Conversions Part 2

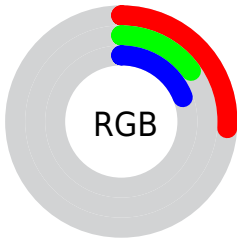
Format	Color
RYB	66, 38, 48
Decimal	4335152
CIELab	19.00, 14.86, -0.94
CIELCh	19, 14.889, 356.371
Yxy	2.7468, 0.3705, 0.2941
Android (android.graphics.Color)	4282525232 (0xFF422630)
YUV	47.5120, 0.2406, 16.2140
Hunter-Lab	16.5735, 8.2686, 0.3930

Details

The CIELCh color **19, 14.889, 356.371** is a dark color, and the websafe version is hex **333333**. A complement of this color would be **25, 13.624, 168.301**, and the grayscale version is **20, 0.004, 296.813**.

A 20% lighter version of the original color is **39, 15.224, 355.772**, and **2, 7.827, 19.405** is the 20% darker color. If you saturate the color by 10%, you get **17, 18.415, 357.818**, and if you desaturate by 10%, it is **21, 11.302, 355.139**.

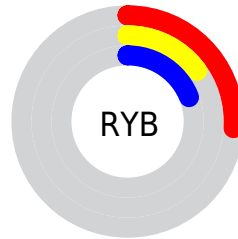
Distribution



Red (26%)

Green (15%)

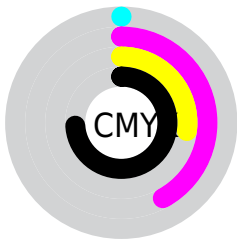
Blue (19%)



Red (26%)

Yellow (15%)

Blue (19%)

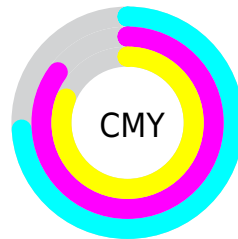


Cyan (0%)

Magenta (42%)

Yellow (27%)

Black (74%)



Cyan (74%)

Magenta (85%)

Yellow (81%)

Brightness & Saturation Gradients

These gradients show how the CIELCh color 19, 14.889, 356.371 changes by changing the brightness by 10 percent. The first figure shows a shift by +10% for each color and the second figure -10%.

Similar to the brightness gradients but the following saturation gradients show a change of the CIELCh color 19, 14.889, 356.371 by changing the saturation by 10% instead.

■ 19, 14.889,
356.371

■ 19, 14.889,
356.371

■ 100, 14.889,
356.371

■ 9, 14.889, 356.371

■ 39, 14.889,
356.371

■ 0, 14.889, 356.371

■ 49, 14.889,
356.371

■ 59, 14.889,
356.371

■ 69, 14.889,
356.371

■ 79, 14.889,
356.371

■ 89, 14.889,

356.371

99, 14.889,
356.371

19, 14.889,
356.371

19, 14.889,
356.371

17, 18.415,
357.818

21, 11.302,
355.139

15, 21.780,
359.542

23, 7.734, 354.064

14, 24.856, 1.634

25, 4.232, 353.104

13, 27.510, 4.204

27, 0.829, 352.066

12, 29.922, 7.011

30, 2.461, 171.649

11, 31.995, 8.773

32, 5.631, 170.917

■ 34, 8.681, 170.279

■ 36, 11.615,
169.698

■ 39, 14.440,
169.162

Harmonies

Complementary

The Complementary color scheme is a pair of colors which are on the opposite of each other on the color wheel.



19, 14.889, 356.371



25, 13.624, 168.301

Rectangle

The Rectangle color scheme consists of four colors that form a rectangle on the color wheel.



19, 14.889, 356.371



19, 14.889, 46.371



19, 14.889, 176.371



19, 14.889, 226.371

Sweetspot

The Sweet Spot groups the original color and five complimentary colors.



19, 14.888, 356.373



33, 5.549, 353.205



18, 20.607, 315.215



15, 3.828, 353.307



70, 0.009, 296.813



18, 0.003, 296.813

Same Dimension

The Same Dimension uses a secret algorithm to generate beautiful new colors.



19, 14.888, 356.373



24, 22.478, 357.939



20, 12.862, 33.263



12, 1.885, 352.739



19, 41.779, 12.073



48, 78.021, 16.561

Inverse Universe

The Inverse Universe completely reimagines the original color for something new.



19, 14.888, 356.373



24, 22.478, 357.939



25, 9.774, 212.632



12, 1.885, 352.739



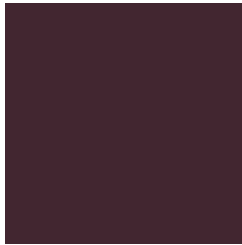
19, 41.779, 12.073



48, 78.021, 16.561

Previews

White Background



This preview shows how the CIE LCh color 19, 14.889, 356.371 looks on a white background.

Color Contrast Check

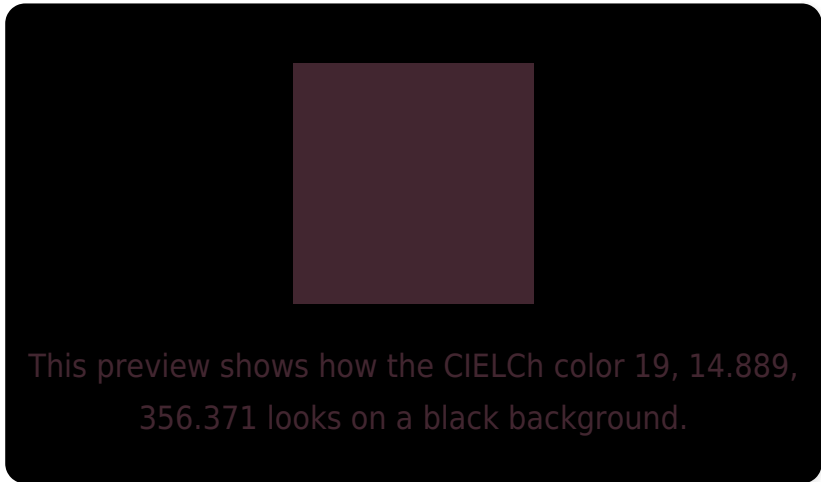
Large Text (above 18pt) WCAG AA ✓ Pass

Any Text WCAG AA ✓ Pass

Large Text (above 18pt) WCAG AAA ✓ Pass

Any Text WCAG AAA ✓ Pass

Black Background



Color Contrast Check

Large Text (above 18pt) WCAG AA × Fail

Any Text WCAG AA × Fail

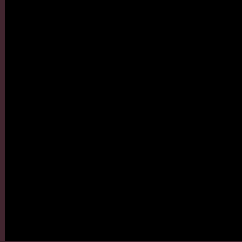
Large Text (above 18pt) WCAG AAA × Fail

Any Text WCAG AAA × Fail

If you want to check with other color combinations, try the [Color Contrast Checker](#).

CIELCh 19, 14.889, 356.371

Background



This preview shows how black text looks on a background with the CIELCh color 19, 14.889, 356.371.



This preview shows how white text looks on a background with the CIELCh color 19, 14.889, 356.371.

Color Blindness Simulation

Color vision deficiency is a very complex topic, and I could not describe the different causes any better than Wikipedia does, so if you want to learn more, you should check out their [article about color blindness](#).

Dichromacy



Original Color
19, 14.889, 356.371

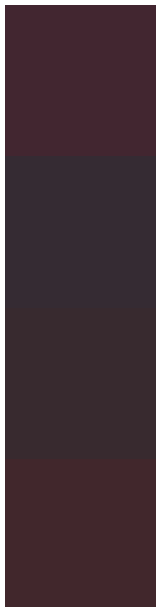
Protanopia
19, 4.798, 291.345

Deuteranopia
19, 3.171, 354.564



Tritanopia
19, 13.105, 13.814

Trichromacy



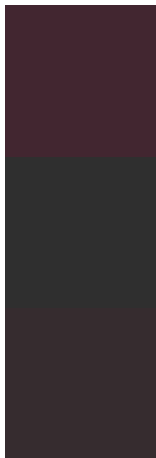
Original Color
19, 14.889, 356.371

Protanomaly
19, 7.205, 331.511

Deuteranomaly
19, 7.523, 354.248

Tritanomaly
19, 13.184, 7.952

Monochromacy



Original Color
19, 14.889, 356.371

Achromatopsia
19, 0.004, 296.813

Achromatomaly
19, 5.208, 357.480

CSS Examples

Text

The CSS property to change the color of the text to CIELCh 19, 14.889, 356.371 is called "color". The color property can be set on classes, ids or directly on the HTML element.

This example shows how text in the color `rgb(66, 38, 48)` looks like.

```
.text, #text, p{  
    color:rgb(66, 38, 48)  
}
```

If you want to add a text shadow in that color use the text-shadow property, you can generate a text shadow directly with our [CSS Text Shadow Generator](#).

Here you see how black text with a 4 pixel rgb(66, 38, 48) colored shadow looks like.

```
.shadow{ text-shadow: 4px 4px 2px rgb(66, 38, 48) }
```

Border

The CSS property to change the border of an element to CIELCh 19, 14.889, 356.371 is called "border". The border property can be set on classes, ids or directly on the HTML element.

This example shows the color as border, it can be applied via the CSS property "border" or "border-color".

```
.border, #border, table{ border:4px solid rgb(66, 38, 48) }
```

If only the border color should be changed use the property `border-color`.

```
.border{ border-color:rgb(66, 38, 48) }
```

If you want to add a box shadow in that color use:

Here you see how a box with a 4 pixel `rgb(66, 38, 48)` colored shadow looks like.

```
.boxshadow{ -moz-box-shadow:4px 4px 4px  
4px rgb(66, 38, 48); -webkit-box-  
shadow:4px 4px 4px 4px rgb(66, 38, 48);  
box-shadow:4px 4px 4px 4px rgb(66, 38, 48)  
}
```

Background

The CSS property to change the background color of an element to CIELCh 19, 14.889, 356.371 is called "background". The background property can be set on classes, ids or directly on the HTML element.

```
.background, #background, body{  
background: rgb(66, 38, 48) }
```

If only the background color should be changed can be used:

```
.background{ background-color: rgb(66, 38,  
48) }
```

This example shows the color as background, it is applied via the CSS property "background".

To optimize and compress your CSS code, you can use our [online CSS compressor and optimizer](#) based on csstidy. If you want to create a linear or radial gradient as background or border, check our [CSS Gradient Generator](#).

Hey! You found this booklet interesting? Support Converting Colors with the new Membership Option!

The pro membership hides all ads, plus gives you double the colors in the color bucket, and more awesome pro features!

[Learn more, Memberships starting at \\$2.50/m!](#)

**Follow me
on Twitter!**

@ConvertingColor