

# Converting Colors

CIELCh(19, 18.332, 24.067)

Have a look what the booklet for  
CIELCh(19, 18.332, 24.067) contains.

<b>CIELCh(19, 18.134, 23.963)</b> .....	3
<i><b>Conversions</b></i> .....	4
<i><b>Details</b></i> .....	6
<i><b>Harmonies</b></i> .....	11
<i><b>Previews</b></i> .....	20
<i><b>Color Blindness Simulation</b></i> .....	23
<i><b>CSS Examples</b></i> .....	26

**Color**

**CIELCh(19, 18.134, 23.963)**

# Conversions

## Conversions Part 1

Format	Color
Hex	472424
RGB	71, 36, 36
RGB Percent	28%, 14%, 14%
CMY	0.7208, 0.8582, 0.8582
CMYK	0.00, 0.49, 0.49, 0.72
HSL	0°, 33%, 21%
HSV	0°, 49%, 28%
XYZ	3.5690, 2.7468, 2.0240
YIQ	46.4650, 20.8600, 7.4200

# Conversions

## Conversions Part 2

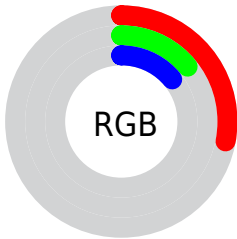
<b>Format</b>	<b>Color</b>
<b>R<sub>YB</sub></b>	71, 36, 36
Decimal	4662308
CIE Lab	19.00, 16.57, 7.37
CIE LCh	19, 18.134, 23.963
Yxy	2.7468, 0.4280, 0.3294
Android (android.graphics.Color)	4282852388 (0xFF472424)
YUV	46.4650, -5.1592, 21.5172
Hunter-Lab	16.5735, 9.4356, 4.3610

# Details

The CIELCh color **19, 18.134, 23.963** is a dark color, and the websafe version is hex **663333**. A complement of this color would be **28, 13.240, 197.398**, and the grayscale version is **19, 0.004, 296.813**.

A 20% lighter version of the original color is **39, 18.209, 23.983**, and **2, 8.895, 16.806** is the 20% darker color. If you saturate the color by 10%, you get **17, 22.388, 25.740**, and if you desaturate by 10%, it is **21, 14.020, 22.567**.

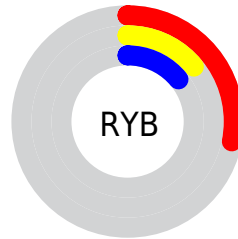
# Distribution



Red (28%)

Green (14%)

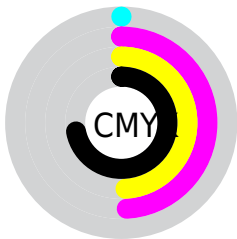
Blue (14%)



Red (28%)

Yellow (14%)

Blue (14%)

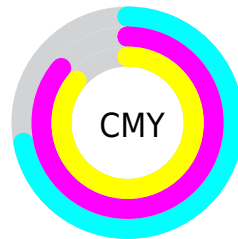


Cyan (0%)

Magenta (49%)

Yellow (49%)

Black (72%)



Cyan (72%)

Magenta (86%)

Yellow (86%)

# Brightness & Saturation Gradients


These gradients show how the CIELCh color 19, 18.134, 23.963 changes by changing the brightness by 10 percent. The first figure shows a shift by +10% for each color and the second figure -10%.

Similar to the brightness gradients but the following saturation gradients show a change of the CIELCh color 19, 18.134, 23.963 by changing the saturation by 10% instead.



 19, 18.134, 23.963

 19, 18.134, 23.963

 100, 18.134,  
23.963

 9, 18.134, 23.963

 39, 18.134, 23.963

 0, 18.134, 23.963

 49, 18.134, 23.963

 59, 18.134, 23.963

 69, 18.134, 23.963

 79, 18.134, 23.963

 89, 18.134, 23.963

 99, 18.134, 23.963

■ 19, 18.134, 23.963

■ 19, 18.134, 23.963

■ 17, 22.388, 25.740

■ 21, 14.020, 22.567

■ 15, 26.699, 27.962

■ 23, 10.107, 21.463

■ 14, 30.591, 29.516

■ 26, 6.421, 20.583

■ 13, 33.602, 29.906

■ 28, 2.971, 19.850

■ 12, 36.533, 29.784

■ 30, 0.247, 200.459

■ 12, 36.775, 29.755

■ 33, 3.248, 199.031

■ 35, 6.050, 198.634

■ 38, 8.671, 198.327

■ 40, 11.131,  
198.077

# Harmonies

# Complementary

The Complementary color scheme is a pair of colors which are on the opposite of each other on the color wheel.



19, 18.134, 23.963



28, 13.240, 197.398

# Rectangle

The Rectangle color scheme consists of four colors that form a rectangle on the color wheel.



19, 18.134, 23.963



19, 18.134, 73.963



19, 18.134, 203.963



19, 18.134, 253.963

# Sweetspot

The Sweet Spot groups the original color and five complimentary colors.



19, 18.133, 23.967



35, 6.115, 20.306



20, 27.214, 326.758



16, 4.124, 20.375



71, 0.009, 296.813



19, 0.004, 296.813



# Same Dimension

The Same Dimension uses a secret algorithm to generate beautiful new colors.



19, 18.133, 23.967



23, 27.679, 26.159



24, 14.918, 69.943



13, 1.799, 19.806



19, 49.398, 35.628



47, 95.755, 40.002





# Inverse Universe

The Inverse Universe completely reimagines the original color for something new.



28, 13.240, 197.398



36, 18.487, 197.055



22, 13.149, 263.260



14, 1.715, 199.106



38, 25.114, 196.419

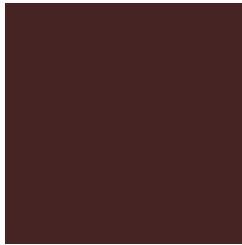


82, 45.874, 196.421



# Previews

## White Background



This preview shows how the CIE LCh color 19, 18.134, 23.963 looks on a white background.

## Color Contrast Check

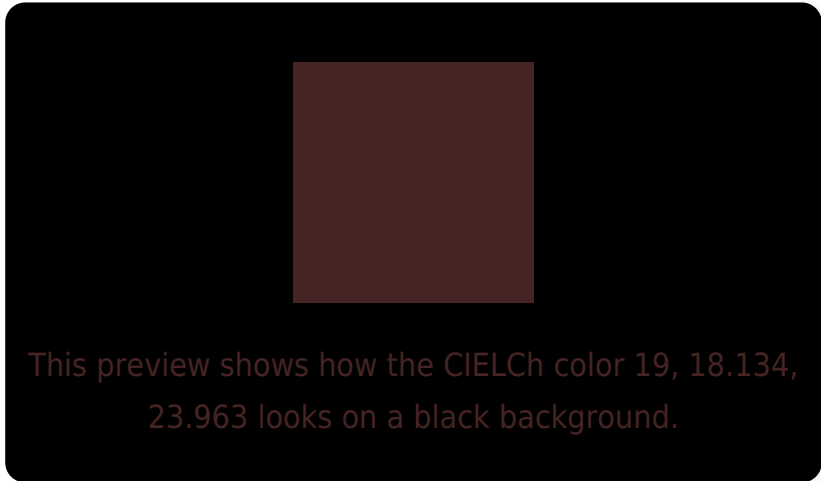
Large Text (above 18pt) WCAG AA ✓ Pass

Any Text WCAG AA ✓ Pass

Large Text (above 18pt) WCAG AAA ✓ Pass

Any Text WCAG AAA ✓ Pass

# Black Background



## Color Contrast Check

Large Text (above 18pt) WCAG AA × Fail

Any Text WCAG AA × Fail

Large Text (above 18pt) WCAG AAA × Fail

Any Text WCAG AAA × Fail

If you want to check with other color combinations, try the [Color Contrast Checker](#).

**CIELCh 19, 18.134, 23.963**

## **Background**



This preview shows how black text looks on a background with the CIELCh color 19, 18.134, 23.963.



This preview shows how white text looks on a background with the CIELCh color 19, 18.134, 23.963.

# Color Blindness Simulation

Color vision deficiency is a very complex topic, and I could not describe the different causes any better than Wikipedia does, so if you want to learn more, you should check out their [article about color blindness](#).

## Dichromacy



### Original Color

19, 18.134, 23.963

### Protanopia

19, 4.195, 95.612

### Deuteranopia

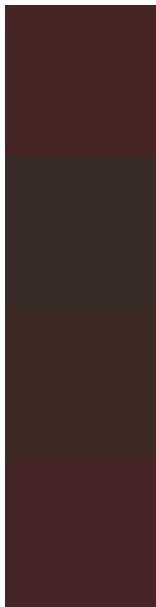
19, 8.619, 71.578



**Tritanopia**  
19, 17.884, 19.754



# Trichromacy



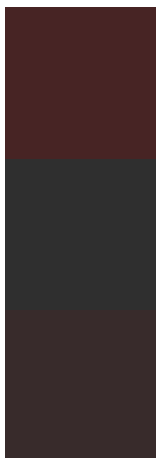
**Original Color**  
19, 18.134, 23.963

**Protanomaly**  
19, 7.662, 41.488

**Deuteranomaly**  
19, 11.158, 46.261

**Tritanomaly**  
19, 17.996, 21.874

# Monochromacy



**Original Color**  
19, 18.134, 23.963

**Achromatopsia**  
19, 0.004, 296.813

**Achromatomaly**  
19, 6.419, 20.812

# CSS Examples

## Text

The CSS property to change the color of the text to CIELCh 19, 18.134, 23.963 is called "color". The color property can be set on classes, ids or directly on the HTML element.

This example shows how text in the color `rgb(71, 36, 36)` looks like.

```
.text, #text, p{  
    color:rgb(71, 36, 36)  
}
```

If you want to add a text shadow in that color use the text-shadow property, you can generate a text shadow directly with our [CSS Text Shadow Generator](#).

Here you see how black text with a 4 pixel rgb(71, 36, 36) colored shadow looks like.

```
.shadow{ text-shadow: 4px 4px 2px rgb(71, 36, 36) }
```

## Border

The CSS property to change the border of an element to CIELCh 19, 18.134, 23.963 is called "border". The border property can be set on classes, ids or directly on the HTML element.

This example shows the color as border, it can be applied via the CSS property "border" or "border-color".

```
.border, #border, table{ border:4px solid rgb(71, 36, 36) }
```

If only the border color should be changed use the property `border-color`.

```
.border{ border-color:rgb(71, 36, 36) }
```

If you want to add a box shadow in that color use:

Here you see how a box with a 4 pixel `rgb(71, 36, 36)` colored shadow looks like.

```
.boxshadow{ -moz-box-shadow:4px 4px 4px  
4px rgb(71, 36, 36); -webkit-box-  
shadow:4px 4px 4px 4px rgb(71, 36, 36);  
box-shadow:4px 4px 4px 4px rgb(71, 36, 36)  
}
```

# Background

The CSS property to change the background color of an element to CIELCh 19, 18.134, 23.963 is called "background". The background property can be set on classes, ids or directly on the HTML element.

```
.background, #background, body{  
background: rgb(71, 36, 36) }
```

If only the background color should be changed can be used:

```
.background{ background-color: rgb(71, 36,  
36) }
```

This example shows the color as background, it is applied via the CSS property "background".

To optimize and compress your CSS code, you can use our [online CSS compressor and optimizer](#) based on csstidy. If you want to create a linear or radial gradient as background or border, check our [CSS Gradient Generator](#).

# Hey! You found this booklet interesting? Support Converting Colors with the new Membership Option!

The pro membership hides all ads, plus gives you double the colors in the color bucket, and more awesome pro features!

**[Learn more, Memberships starting at \\$2.50/m!](#)**

**Follow me  
on Twitter!**

@ConvertingColor