

Converting Colors

CIELCh(19, 29.756, 46.403)

Have a look what the booklet for
CIELCh(19, 29.756, 46.403) contains.

CIELCh(19, 29.946, 45.935)	3
<i>Conversions</i>	4
<i>Details</i>	6
<i>Harmonies</i>	11
<i>Previews</i>	20
<i>Color Blindness Simulation</i>	23
<i>CSS Examples</i>	26

Color

CIELCh(19, 29.946, 45.935)

Conversions

Conversions Part 1

Format	Color
Hex	4F200F
RGB	79, 32, 15
RGB Percent	31%, 13%, 6%
CMY	0.6895, 0.8739, 0.9405
CMYK	0.00, 0.59, 0.81, 0.69
HSL	16°, 68%, 19%
HSV	16°, 81%, 31%
XYZ	3.8482, 2.7468, 0.7859
YIQ	44.1150, 33.4690, 4.6770

Conversions

Conversions Part 2

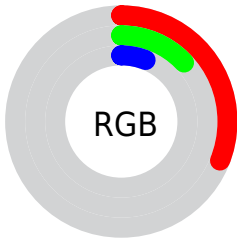
Format	Color
R_{YB}	79, 38, 15
Decimal	5185551
CIE Lab	19.00, 20.83, 21.52
CIE LCh	19, 29.946, 45.935
Yxy	2.7468, 0.5214, 0.3722
Android (android.graphics.Color)	4283375631 (0xFF4F200F)
YUV	44.1150, -14.3537, 30.5941
Hunter-Lab	16.5735, 12.4418, 8.7900

Details

The CIELCh color **19, 29.946, 45.935** is a dark color, and the websafe version is hex **663333**. A complement of this color would be **24, 17.294, 238.745**, and the grayscale version is **18, 0.003, 296.813**.

A 20% lighter version of the original color is **39, 29.725, 46.222**, and **3, 11.872, 17.458** is the 20% darker color. If you saturate the color by 10%, you get **18, 33.396, 44.633**, and if you desaturate by 10%, it is **21, 25.626, 45.937**.

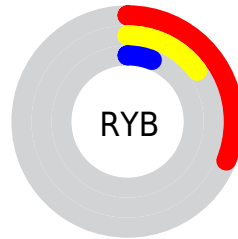
Distribution



Red (31%)

Green (13%)

Blue (6%)



Red (31%)

Yellow (15%)

Blue (6%)

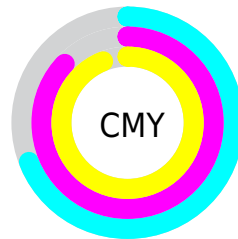


Cyan (0%)

Magenta (59%)

Yellow (81%)

Black (69%)



Cyan (69%)

Magenta (87%)

Yellow (94%)


Brightness & Saturation Gradients

These gradients show how the CIELCh color 19, 29.946, 45.935 changes by changing the brightness by 10 percent. The first figure shows a shift by +10% for each color and the second figure -10%.

Similar to the brightness gradients but the following saturation gradients show a change of the CIELCh color 19, 29.946, 45.935 by changing the saturation by 10% instead.

 19, 29.946, 45.935

 19, 29.946, 45.935

 100, 29.946,
45.935

 9, 29.946, 45.935

 39, 29.946, 45.935

 0, 29.946, 45.935

 49, 29.946, 45.935

 59, 29.946, 45.935

 69, 29.946, 45.935

 79, 29.946, 45.935

 89, 29.946, 45.935

 99, 29.946, 45.935

■ 19, 29.946, 45.935

■ 19, 29.946, 45.935

■ 18, 33.396, 44.633

■ 21, 25.626, 45.937

■ 17, 36.278, 43.704

■ 22, 21.301, 45.787

■ 24, 17.184, 45.761

■ 26, 13.310, 45.862

■ 28, 9.689, 46.074

■ 30, 6.313, 46.374

■ 32, 3.167, 46.721

■ 34, 0.234, 46.108

■ 36, 2.507, 227.848

Harmonies

Complementary

The Complementary color scheme is a pair of colors which are on the opposite of each other on the color wheel.



19, 29.946, 45.935



24, 17.294, 238.745

Rectangle

The Rectangle color scheme consists of four colors that form a rectangle on the color wheel.



19, 29.946, 45.935



19, 29.946, 95.935



19, 29.946, 225.935



19, 29.946, 275.935

Sweetspot

The Sweet Spot groups the original color and five complimentary colors.



19, 29.945, 45.938



37, 9.097, 46.245



17, 37.293, 338.080



17, 6.214, 46.187



73, 0.009, 296.813



21, 0.004, 296.813

Same Dimension

The Same Dimension uses a secret algorithm to generate beautiful new colors.



19, 29.945, 45.938



23, 44.983, 45.620



28, 30.448, 87.762



15, 1.663, 46.789



23, 47.286, 45.636



52, 90.120, 45.433

Inverse Universe

The Inverse Universe completely reimagines the original color for something new.



24, 17.294, 238.745



30, 22.998, 245.404



14, 34.077, 292.507



16, 1.590, 227.860



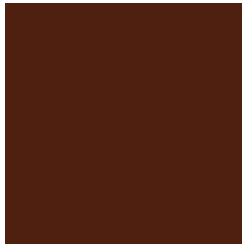
30, 23.802, 246.606



66, 43.606, 250.164

Previews

White Background



This preview shows how the CIELCh color 19, 29.946, 45.935 looks on a white background.

Color Contrast Check

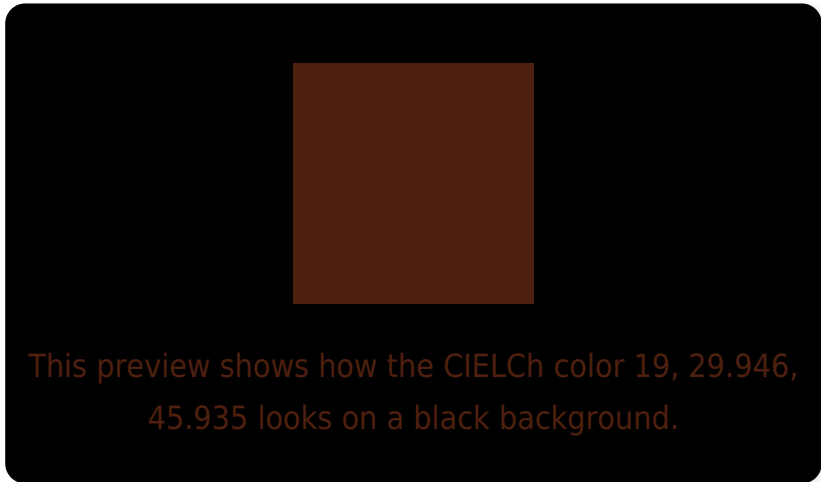
Large Text (above 18pt) WCAG AA ✓ Pass

Any Text WCAG AA ✓ Pass

Large Text (above 18pt) WCAG AAA ✓ Pass

Any Text WCAG AAA ✓ Pass

Black Background



Color Contrast Check

Large Text (above 18pt) WCAG AA × Fail

Any Text WCAG AA × Fail

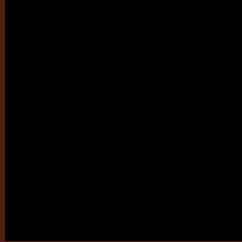
Large Text (above 18pt) WCAG AAA × Fail

Any Text WCAG AAA × Fail

If you want to check with other color combinations, try the [Color Contrast Checker](#).

CIELCh 19, 29.946, 45.935

Background



This preview shows how black text looks on a background with the CIELCh color 19, 29.946, 45.935.

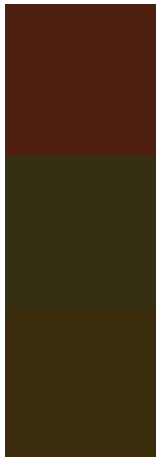


This preview shows how white text looks on a background with the CIELCh color 19, 29.946, 45.935.

Color Blindness Simulation

Color vision deficiency is a very complex topic, and I could not describe the different causes any better than Wikipedia does, so if you want to learn more, you should check out their [article about color blindness](#).

Dichromacy



Original Color

19, 29.946, 45.935

Protanopia

19, 18.833, 95.473

Deuteranopia

19, 23.230, 84.854



Tritanopia
19, 25.902, 23.836

Trichromacy



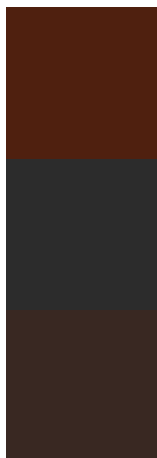
Original Color
19, 29.946, 45.935

Protanomaly
19, 20.432, 70.708

Deuteranomaly
19, 23.747, 66.982

Tritanomaly
19, 26.970, 33.104

Monochromacy



Original Color
19, 29.946, 45.935

Achromatopsia
18, 0.003, 296.813

Achromatomaly
18, 9.916, 45.441

CSS Examples

Text

The CSS property to change the color of the text to CIELCh 19, 29.946, 45.935 is called "color". The color property can be set on classes, ids or directly on the HTML element.

This example shows how text in the color `rgb(79, 32, 15)` looks like.

```
.text, #text, p{  
    color:rgb(79, 32, 15)  
}
```

If you want to add a text shadow in that color use the text-shadow property, you can generate a text shadow directly with our [CSS Text Shadow Generator](#).

Here you see how black text with a 4 pixel rgb(79, 32, 15) colored shadow looks like.

```
.shadow{ text-shadow: 4px 4px 2px rgb(79, 32, 15) }
```

Border

The CSS property to change the border of an element to CIELCh 19, 29.946, 45.935 is called "border". The border property can be set on classes, ids or directly on the HTML element.

This example shows the color as border, it can be applied via the CSS property "border" or "border-color".

```
.border, #border, table{ border:4px solid rgb(79, 32, 15) }
```

If only the border color should be changed use the property `border-color`.

```
.border{ border-color:rgb(79, 32, 15) }
```

If you want to add a box shadow in that color use:

Here you see how a box with a 4 pixel `rgb(79, 32, 15)` colored shadow looks like.

```
.boxshadow{ -moz-box-shadow:4px 4px 4px  
4px rgb(79, 32, 15); -webkit-box-  
shadow:4px 4px 4px 4px rgb(79, 32, 15);  
box-shadow:4px 4px 4px 4px rgb(79, 32, 15)  
}
```

Background

The CSS property to change the background color of an element to CIELCh 19, 29.946, 45.935 is called "background". The background property can be set on classes, ids or directly on the HTML element.

```
.background, #background, body{  
background: rgb(79, 32, 15) }
```

If only the background color should be changed can be used:

```
.background{ background-color: rgb(79, 32,  
15) }
```

This example shows the color as background, it is applied via the CSS property "background".

To optimize and compress your CSS code, you can use our [online CSS compressor and optimizer](#) based on csstidy. If you want to create a linear or radial gradient as background or border, check our [CSS Gradient Generator](#).

Hey! You found this booklet interesting? Support Converting Colors with the new Membership Option!

The pro membership hides all ads, plus gives you double the colors in the color bucket, and more awesome pro features!

[Learn more, Memberships starting at \\$2.50/m!](#)

**Follow me
on Twitter!**

@ConvertingColor