

Converting Colors

CIELCh(19, 9.056, 38.662)

Have a look what the booklet for
CIELCh(19, 9.056, 38.662) contains.

CIELCh(19, 9.191, 38.283)	3
<i>Conversions</i>	4
<i>Details</i>	6
<i>Harmonies</i>	11
<i>Previews</i>	20
<i>Color Blindness Simulation</i>	23
<i>CSS Examples</i>	26

Color

CIELCh(19, 9.191, 38.283)

Conversions

Conversions Part 1

Format	Color
Hex	3B2A26
RGB	59, 42, 38
RGB Percent	23%, 16%, 15%
CMY	0.7678, 0.8345, 0.8502
CMYK	0.00, 0.29, 0.35, 0.77
HSL	11°, 22%, 19%
HSV	11°, 35%, 23%
XYZ	3.0035, 2.7468, 2.2215
YIQ	46.6270, 11.4160, 2.3600

Conversions

Conversions Part 2

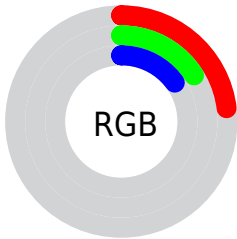
Format	Color
R_{YB}	59, 43, 38
Decimal	3877414
CIE Lab	19.00, 7.21, 5.69
CIE LCh	19, 9.191, 38.283
Yxy	2.7468, 0.3768, 0.3446
Android (android.graphics.Color)	4282067494 (0xFF3B2A26)
YUV	46.6270, -4.2531, 10.8511
Hunter-Lab	16.5735, 3.3449, 3.6542

Details

The CIELCh color **19, 9.191, 38.283** is a dark color, and the websafe version is hex **333333**. A complement of this color would be **22, 7.422, 219.664**, and the grayscale version is **19, 0.004, 296.813**.

A 20% lighter version of the original color is **39, 9.265, 35.719**, and **0, 1.941, 19.405** is the 20% darker color. If you saturate the color by 10%, you get **17, 12.210, 38.526**, and if you desaturate by 10%, it is **21, 6.367, 38.179**.

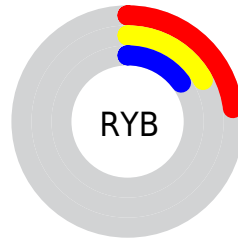
Distribution



Red (23%)

Green (16%)

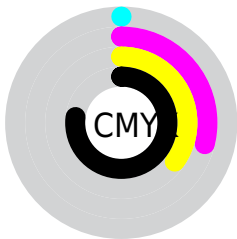
Blue (15%)



Red (23%)

Yellow (17%)

Blue (15%)

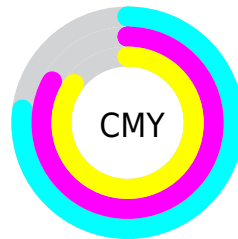


Cyan (0%)

Magenta (29%)

Yellow (35%)

Black (77%)



Cyan (77%)

Magenta (83%)

Yellow (85%)

Brightness & Saturation Gradients

These gradients show how the CIELCh color 19, 9.191, 38.283 changes by changing the brightness by 10 percent. The first figure shows a shift by +10% for each color and the second figure -10%.

Similar to the brightness gradients but the following saturation gradients show a change of the CIELCh color 19, 9.191, 38.283 by changing the saturation by 10% instead.

 19, 9.191, 38.283  19, 9.191, 38.283

 100, 9.191, 38.283  9, 9.191, 38.283

 39, 9.191, 38.283  0, 9.191, 38.283

 49, 9.191, 38.283

 59, 9.191, 38.283

 69, 9.191, 38.283

 79, 9.191, 38.283

 89, 9.191, 38.283

 99, 9.191, 38.283

 19, 9.191, 38.283  19, 9.191, 38.283

17, 12.210, 38.526

21, 6.367, 38.179

16, 15.425, 38.918

22, 3.734, 38.160

14, 18.810, 39.447

24, 1.279, 38.132

13, 21.900, 38.791

26, 1.013, 218.697

12, 24.496, 37.030

27, 3.155, 218.748

11, 26.871, 35.730

29, 5.162, 218.964

10, 27.887, 35.440

31, 7.049, 219.223

33, 8.828, 219.507

34, 10.511,
219.806

Harmonies

Complementary

The Complementary color scheme is a pair of colors which are on the opposite of each other on the color wheel.



19, 9.191, 38.283



22, 7.422, 219.664

Rectangle

The Rectangle color scheme consists of four colors that form a rectangle on the color wheel.



19, 9.191, 38.283



19, 9.191, 88.283



19, 9.191, 218.283



19, 9.191, 268.283

Sweetspot

The Sweet Spot groups the original color and five complimentary colors.



19, 9.190, 38.290



30, 3.236, 38.164



18, 15.065, 331.884



14, 2.136, 38.164



68, 0.008, 296.813



15, 0.003, 296.813

Same Dimension

The Same Dimension uses a secret algorithm to generate beautiful new colors.



19, 9.190, 38.290



24, 14.263, 38.510



22, 10.166, 88.525



11, 1.341, 38.162



19, 44.310, 41.256



48, 90.020, 42.943

Inverse Universe

The Inverse Universe completely reimagines the original color for something new.



22, 7.422, 219.664



28, 10.771, 220.306



18, 10.161, 277.143



11, 1.282, 218.673



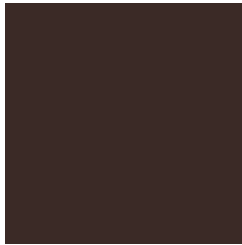
29, 21.070, 230.863



68, 39.423, 234.001

Previews

White Background



This preview shows how the CIELCh color 19, 9.191, 38.283 looks on a white background.

Color Contrast Check

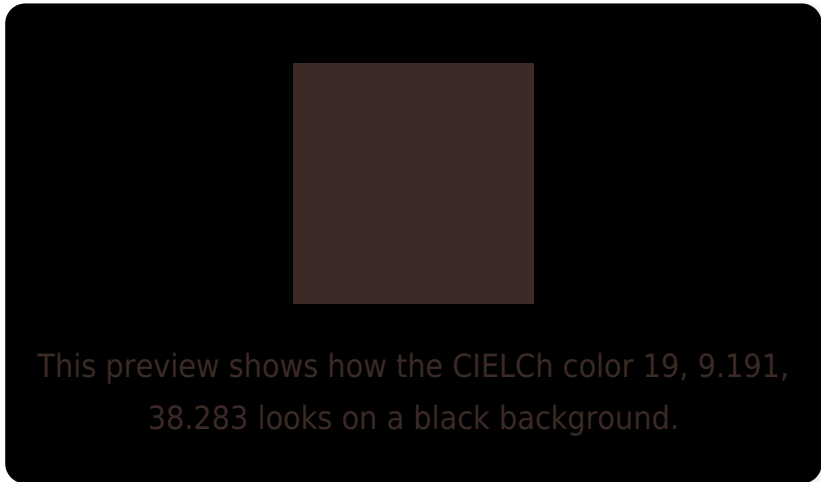
Large Text (above 18pt) WCAG AA ✓ Pass

Any Text WCAG AA ✓ Pass

Large Text (above 18pt) WCAG AAA ✓ Pass

Any Text WCAG AAA ✓ Pass

Black Background



Color Contrast Check

Large Text (above 18pt) WCAG AA × Fail

Any Text WCAG AA × Fail

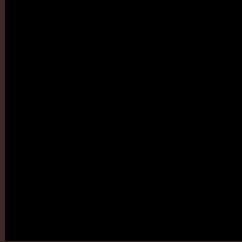
Large Text (above 18pt) WCAG AAA × Fail

Any Text WCAG AAA × Fail

If you want to check with other color combinations, try the [Color Contrast Checker](#).

CIELCh 19, 9.191, 38.283

Background



This preview shows how black text looks on a background with the CIELCh color 19, 9.191, 38.283.



This preview shows how white text looks on a background with the CIELCh color 19, 9.191, 38.283.

Color Blindness Simulation

Color vision deficiency is a very complex topic, and I could not describe the different causes any better than Wikipedia does, so if you want to learn more, you should check out their [article about color blindness](#).

Dichromacy



Original Color

19, 9.191, 38.283

Protanopia

19, 4.352, 89.199

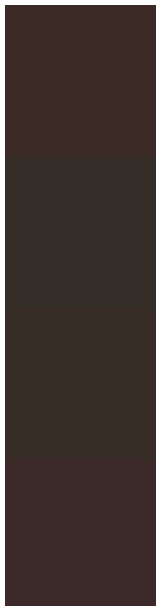
Deuteranopia

19, 6.645, 65.550



Tritanopia
19, 9.546, 9.416

Trichromacy



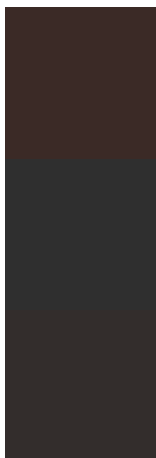
Original Color
19, 9.191, 38.283

Protanomaly
19, 5.768, 64.857

Deuteranomaly
19, 7.419, 53.622

Tritanomaly
19, 9.498, 17.546

Monochromacy



Original Color
19, 9.191, 38.283

Achromatopsia
19, 0.004, 296.813

Achromatomaly
19, 2.989, 33.105

CSS Examples

Text

The CSS property to change the color of the text to CIELCh 19, 9.191, 38.283 is called "color". The color property can be set on classes, ids or directly on the HTML element.

This example shows how text in the color `rgb(59, 42, 38)` looks like.

```
.text, #text, p{  
    color:rgb(59, 42, 38)  
}
```

If you want to add a text shadow in that color use the text-shadow property, you can generate a text shadow directly with our [CSS Text Shadow Generator](#).

Here you see how black text with a 4 pixel rgb(59, 42, 38) colored shadow looks like.

```
.shadow{ text-shadow: 4px 4px 2px rgb(59, 42, 38) }
```

Border

The CSS property to change the border of an element to CIELCh 19, 9.191, 38.283 is called "border". The border property can be set on classes, ids or directly on the HTML element.

This example shows the color as border, it can be applied via the CSS property "border" or "border-color".

```
.border, #border, table{ border:4px solid rgb(59, 42, 38) }
```

If only the border color should be changed use the property `border-color`.

```
.border{ border-color:rgb(59, 42, 38) }
```

If you want to add a box shadow in that color use:

Here you see how a box with a 4 pixel `rgb(59, 42, 38)` colored shadow looks like.

```
.boxshadow{ -moz-box-shadow:4px 4px 4px  
4px rgb(59, 42, 38); -webkit-box-  
shadow:4px 4px 4px 4px rgb(59, 42, 38);  
box-shadow:4px 4px 4px 4px rgb(59, 42, 38)  
}
```

Background

The CSS property to change the background color of an element to CIELCh 19, 9.191, 38.283 is called "background". The background property can be set on classes, ids or directly on the HTML element.

```
.background, #background, body{  
background: rgb(59, 42, 38) }
```

If only the background color should be changed can be used:

```
.background{ background-color: rgb(59, 42,  
38) }
```

This example shows the color as background, it is applied via the CSS property "background".

To optimize and compress your CSS code, you can use our [online CSS compressor and optimizer](#) based on csstidy. If you want to create a linear or radial gradient as background or border, check our [CSS Gradient Generator](#).

Hey! You found this booklet interesting? Support Converting Colors with the new Membership Option!

The pro membership hides all ads, plus gives you double the colors in the color bucket, and more awesome pro features!

[Learn more, Memberships starting at \\$2.50/m!](#)

**Follow me
on Twitter!**

@ConvertingColor