

Converting Colors

CIELCh(19, 9.540, 27.317)

Have a look what the booklet for
CIELCh(19, 9.540, 27.317) contains.

CIELCh(19, 9.250, 29.763)	3
<i>Conversions</i>	4
<i>Details</i>	6
<i>Harmonies</i>	11
<i>Previews</i>	20
<i>Color Blindness Simulation</i>	23
<i>CSS Examples</i>	26

Color

CIELCh(19, 9.250, 29.763)

Conversions

Conversions Part 1

Format	Color
Hex	3C2A28
RGB	60, 42, 40
RGB Percent	24%, 16%, 16%
CMY	0.7656, 0.8361, 0.8439
CMYK	0.00, 0.30, 0.33, 0.77
HSL	6°, 20%, 20%
HSV	6°, 33%, 23%
XYZ	3.0502, 2.7468, 2.3587
YIQ	47.1540, 11.3700, 3.1940

Conversions

Conversions Part 2

Format	Color
R _Y B	60, 42, 40
Decimal	3942952
CIE Lab	19.00, 8.03, 4.59
CIE LCh	19, 9.250, 29.763
Yxy	2.7468, 0.3740, 0.3368
Android (android.graphics.Color)	4282133032 (0xFF3C2A28)
YUV	47.1540, -3.5269, 11.2659
Hunter-Lab	16.5735, 3.8479, 3.1634

Details

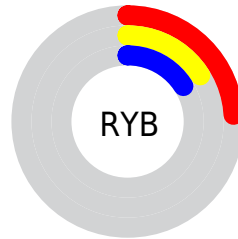
The CIELCh color **19, 9.250, 29.763** is a dark color, and the websafe version is hex **333333**. A complement of this color would be **23, 7.540, 208.407**, and the grayscale version is **19, 0.004, 296.813**.

A 20% lighter version of the original color is **39, 9.389, 28.061**, and **1, 3.057, 19.405** is the 20% darker color. If you saturate the color by 10%, you get **17, 12.443, 30.455**, and if you desaturate by 10%, it is **21, 6.255, 29.254**.

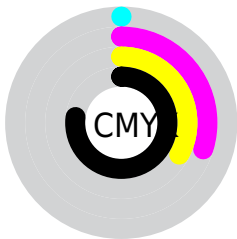
Distribution



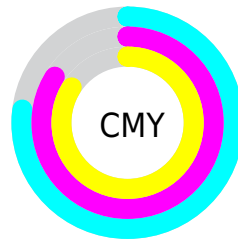
- Red (24%)
- Green (16%)
- Blue (16%)



- Red (24%)
- Yellow (16%)
- Blue (16%)



- Cyan (0%)
- Magenta (30%)
- Yellow (33%)
- Black (77%)



- Cyan (77%)
- Magenta (84%)
- Yellow (84%)

Brightness & Saturation Gradients

These gradients show how the CIELCh color 19, 9.250, 29.763 changes by changing the brightness by 10 percent. The first figure shows a shift by +10% for each color and the second figure -10%.

Similar to the brightness gradients but the following saturation gradients show a change of the CIELCh color 19, 9.250, 29.763 by changing the saturation by 10% instead.

■ 19, 9.250, 29.763

■ 19, 9.250, 29.763

■ 100, 9.250, 29.763

■ 9, 9.250, 29.763

■ 39, 9.250, 29.763

■ 0, 9.250, 29.763

■ 49, 9.250, 29.763

■ 59, 9.250, 29.763

■ 69, 9.250, 29.763

■ 79, 9.250, 29.763

■ 89, 9.250, 29.763

■ 99, 9.250, 29.763

■ 19, 9.250, 29.763

■ 19, 9.250, 29.763

■ 17, 12.443, 30.455

■ 21, 6.255, 29.254

■ 16, 15.827, 31.356

■ 23, 3.459, 28.861

■ 14, 19.377, 32.516

■ 25, 0.852, 28.399

■ 13, 22.735, 32.794

■ 26, 1.579, 208.662

■ 11, 25.563, 31.816

■ 28, 3.848, 208.475

■ 10, 28.001, 31.071

■ 30, 5.972, 208.406

■ 10, 29.572, 30.756

■ 32, 7.965, 208.390

■ 34, 9.841, 208.410

■ 36, 11.613,
208.455

Harmonies

Complementary

The Complementary color scheme is a pair of colors which are on the opposite of each other on the color wheel.



19, 9.250, 29.763



23, 7.540, 208.407

Rectangle

The Rectangle color scheme consists of four colors that form a rectangle on the color wheel.



19, 9.250, 29.763



19, 9.250, 79.763



19, 9.250, 209.763



19, 9.250, 259.763

Sweetspot

The Sweet Spot groups the original color and five complimentary colors.



19, 9.249, 29.769



30, 3.131, 28.754



19, 15.153, 328.949



14, 2.100, 28.769



68, 0.008, 296.813



15, 0.003, 296.813

Same Dimension

The Same Dimension uses a secret algorithm to generate beautiful new colors.



19, 9.249, 29.769



23, 13.999, 30.325



22, 9.001, 81.645



10, 1.433, 28.681



18, 45.695, 37.924



47, 92.622, 41.013

Inverse Universe

The Inverse Universe completely reimagines the original color for something new.



23, 7.540, 208.407



29, 10.759, 208.494



20, 8.712, 269.960



11, 1.367, 208.591



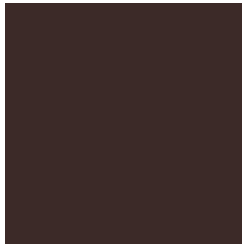
32, 21.674, 212.931



74, 40.140, 214.437

Previews

White Background



This preview shows how the CIELCh color 19, 9.250, 29.763 looks on a white background.

Color Contrast Check

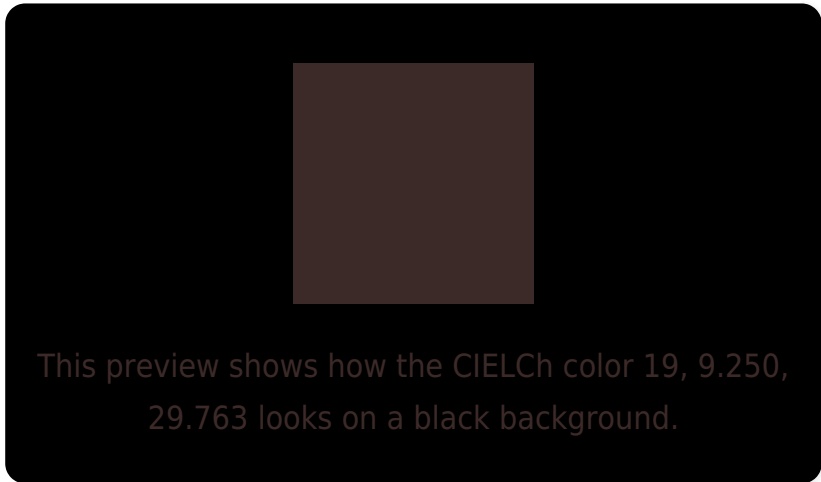
Large Text (above 18pt) WCAG AA ✓ Pass

Any Text WCAG AA ✓ Pass

Large Text (above 18pt) WCAG AAA ✓ Pass

Any Text WCAG AAA ✓ Pass

Black Background



Color Contrast Check

Large Text (above 18pt) WCAG AA × Fail

Any Text WCAG AA × Fail

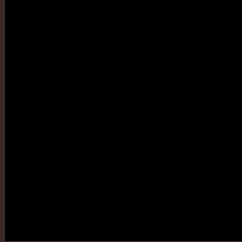
Large Text (above 18pt) WCAG AAA × Fail

Any Text WCAG AAA × Fail

If you want to check with other color combinations, try the [Color Contrast Checker](#).

CIELCh 19, 9.250, 29.763

Background



This preview shows how black text looks on a background with the CIELCh color 19, 9.250, 29.763.

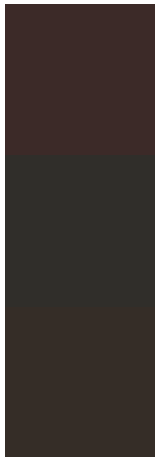


This preview shows how white text looks on a background with the CIELCh color 19, 9.250, 29.763.

Color Blindness Simulation

Color vision deficiency is a very complex topic, and I could not describe the different causes any better than Wikipedia does, so if you want to learn more, you should check out their [article about color blindness](#).

Dichromacy



Original Color

19, 9.250, 29.763

Protanopia

19, 2.895, 89.815

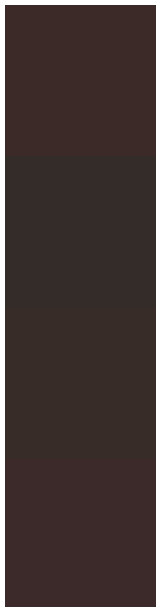
Deuteranopia

19, 5.768, 64.857



Tritanopia
19, 9.546, 9.416

Trichromacy



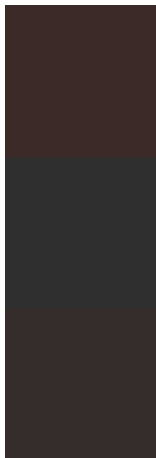
Original Color
19, 9.250, 29.763

Protanomaly
19, 4.479, 47.255

Deuteranomaly
19, 6.568, 51.440

Tritanomaly
19, 9.498, 17.546

Monochromacy



Original Color
19, 9.250, 29.763

Achromatopsia
19, 0.004, 296.813

Achromatomaly
19, 3.473, 31.342

CSS Examples

Text

The CSS property to change the color of the text to CIElCh 19, 9.250, 29.763 is called "color". The color property can be set on classes, ids or directly on the HTML element.

This example shows how text in the color `rgb(60, 42, 40)` looks like.

```
.text, #text, p{  
    color:rgb(60, 42, 40)  
}
```

If you want to add a text shadow in that color use the text-shadow property, you can generate a text shadow directly with our [CSS Text Shadow Generator](#).

Here you see how black text with a 4 pixel rgb(60, 42, 40) colored shadow looks like.

```
.shadow{ text-shadow: 4px 4px 2px rgb(60, 42, 40) }
```

Border

The CSS property to change the border of an element to CIELCh 19, 9.250, 29.763 is called "border". The border property can be set on classes, ids or directly on the HTML element.

This example shows the color as border, it can be applied via the CSS property "border" or "border-color".

```
.border, #border, table{ border:4px solid rgb(60, 42, 40) }
```

If only the border color should be changed use the property `border-color`.

```
.border{ border-color:rgb(60, 42, 40) }
```

If you want to add a box shadow in that color use:

Here you see how a box with a 4 pixel `rgb(60, 42, 40)` colored shadow looks like.

```
.boxshadow{ -moz-box-shadow:4px 4px 4px  
4px rgb(60, 42, 40); -webkit-box-  
shadow:4px 4px 4px 4px rgb(60, 42, 40);  
box-shadow:4px 4px 4px 4px rgb(60, 42, 40)  
}
```

Background

The CSS property to change the background color of an element to CIELCh 19, 9.250, 29.763 is called "background". The background property can be set on classes, ids or directly on the HTML element.

```
.background, #background, body{  
background: rgb(60, 42, 40) }
```

If only the background color should be changed can be used:

```
.background{ background-color: rgb(60, 42,  
40) }
```

This example shows the color as background, it is applied via the CSS property "background".

To optimize and compress your CSS code, you can use our [online CSS compressor and optimizer](#) based on csstidy. If you want to create a linear or radial gradient as background or border, check our [CSS Gradient Generator](#).

Hey! You found this booklet interesting? Support Converting Colors with the new Membership Option!

The pro membership hides all ads, plus gives you double the colors in the color bucket, and more awesome pro features!

[Learn more, Memberships starting at \\$2.50/m!](#)

**Follow me
on Twitter!**

@ConvertingColor